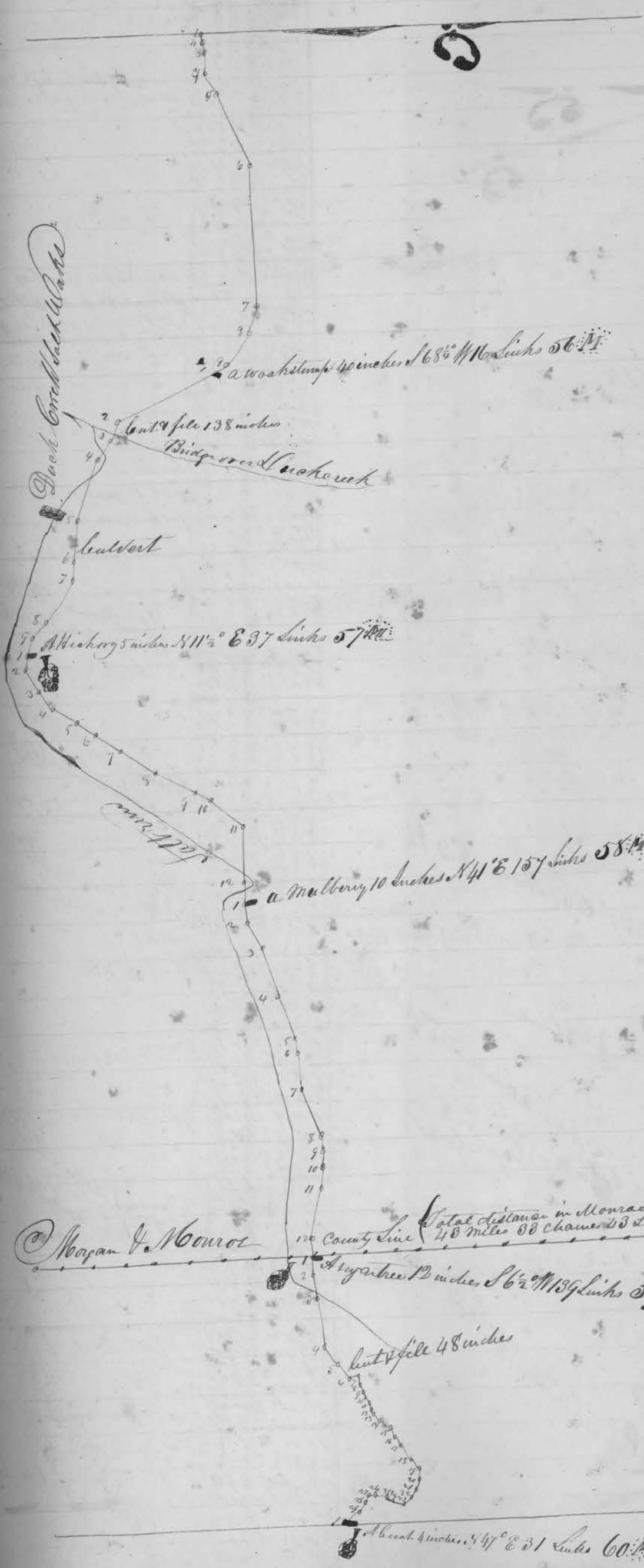


Record of State Road Continued

N^o 12



Sta	Course	distance	observations
1	N 79° E	90	
2	N 85° E	8.08	
3	N 88° E	4.33	
4	N 62 1/2° E	41.80	
5	N 56 1/2° E	17.00	
6	east	32.00	cut & fill 106 inches
7	N 70 1/2° E	5.62	
8	N 49 1/2° E	8.70	
9	N 26 1/2° E	3.57	A wash stump 40 inches S 68° W 116 Links marked 56.24
		80.00	
1	N 26 1/2° E	2.55	
2	N 64° E	4.09	cut & fill 138 inches Bridge over Duck Creek
3	N 56 1/2° E	5.72	
4	N 65° E	14.00	up sutt run Duck Creek sutt works
5	N 82° E	9.57	Sept 9 1834 Culvert
6	N 79 1/2° E	4.58	
7	N 54° E	10.89	A Hickory 5 inches S 67° W 11 1/2° E 37 Links marked 57.24
8	N 47 1/2° E	4.68	
9	N 72 1/2° E	3.74	
		80.00	
1	N 77 1/2° E	3.12	
2	N 59 1/2° E	5.77	
3	N 52° E	5.24	
4	N 30 1/2° E	5.54	
5	N 36° E	5.76	
6	N 32 1/2° E	6.12	
7	N 33 1/2° E	9.00	
8	N 28° E	9.26	
9	N 32 1/2° E	3.78	
10	N 40° E	9.39	
11	east	12.05	
12	N 89° E	4.97	
		80.00	
1	N 89° E	4.09	
2	N 57 1/2° E	6.00	
3	N 71° E	11.71	
4	N 72° E	9.09	
5	N 80 1/2° E	3.03	
6	N 84° E	7.30	
7	N 69 1/2° E	17.43	
8	N 84° E	2.90	
9	N 88 1/2° E	3.71	
10	N 81° E	4.58	
11	N 77 1/2° E	11.21	
12	east	4.22	
	same	46	
		80.00	
1	east	0.81	
2	N 81° E	5.00	
3	N 83 1/2° E	11.00	
4	N 47 1/2° E	4.57	
5	N 55 1/2° E	4.06	cut & fill 48 inches
6	N 16° W	1.91	
7	N 79 1/2° E	1.93	
8	N 70° E	1.38	
9	N 58° E	1.20	
10	N 67 1/2° E	2.00	
11	N 76° E	1.00	
12	N 61° E	1.24	
13	N 46 1/2° E	2.11	
14	N 32 1/2° E	3.00	
15	N 64 1/2° E	2.11	
16	N 61 1/2° E	2.08	
17	N 47 1/2° E	3.69	
18	N 52 1/2° E	3.06	
19	N 76° E	2.21	
20	N 73 1/2° E	2.25	
21	N 55 1/2° E	2.37	
22	N 26 1/2° E	1.98	
23	N 15° W	2.41	
24	N 35 1/2° W	1.29	
25	N 15 1/2° W	2.60	
26	N 57 1/2° E	1.40	
27	N 57 1/2° E	1.56	
28	N 63 1/2° E	2.50	
29	N 85 1/2° E	3.98	
		80.00	

cut & fill 106 inches

A wash stump 40 inches S 68° W 116 Links 56.24

cut & fill 138 inches Bridge over Duck Creek

up sutt run Duck Creek sutt works Sept 9 1834 Culvert

A Hickory 5 inches S 67° W 11 1/2° E 37 Links marked 57.24

A Mulberry 10 inches S 70° W 154° E 157 Links marked 58.24

Morgan & Monroe county line making a total distance in said Morgan county 48 miles 08 chains

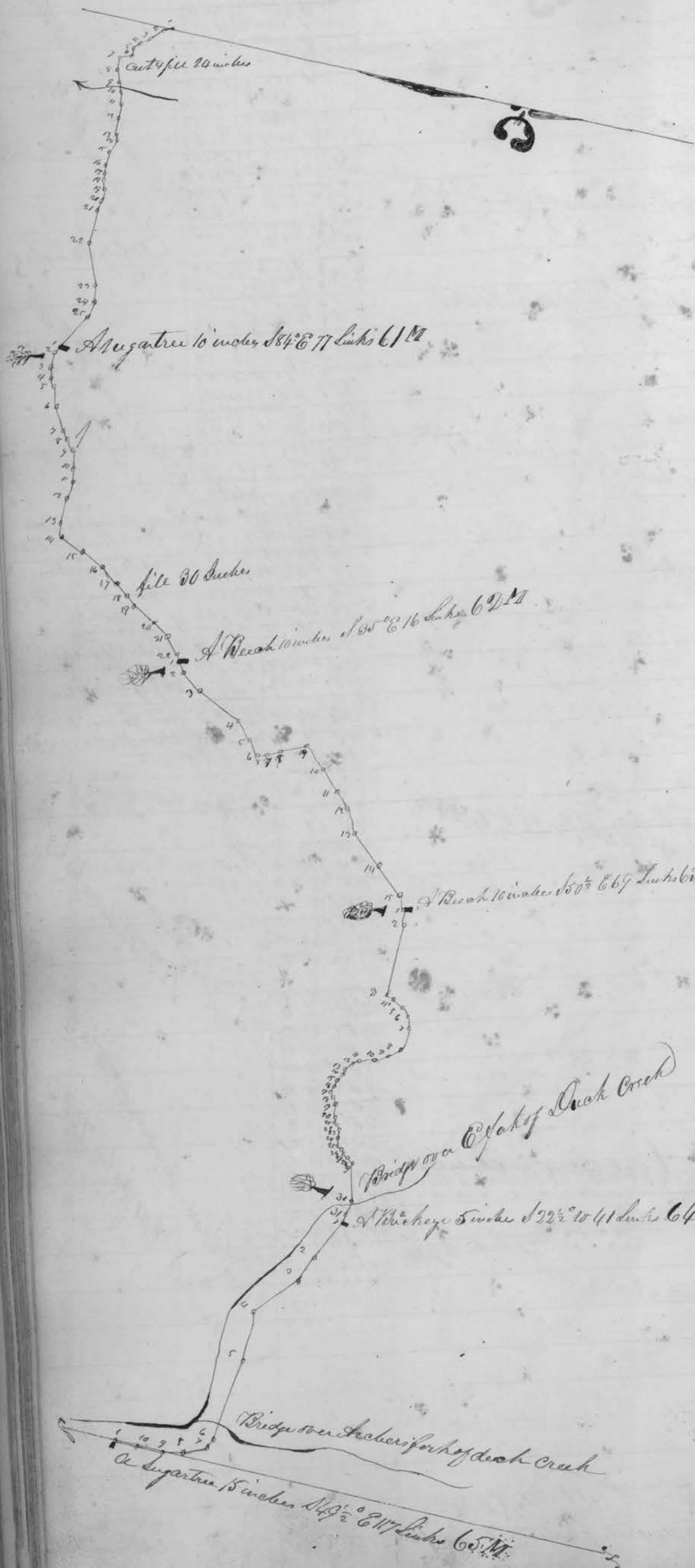
A sycamore 12 inches S 6 1/2° W 113 1/2 Links 59.24

cut & fill 48 inches

A beech 4 inches N 47° E 31 Links 60.24

A beech 4 inches N 47° E 31 Links 60.24

291 Record of No. State Road Continued
No. 13



No	Course	Distance	Observations
1	N 73	22.12	
2	N 47 1/2	22.17	
3	N 71	22.65	
4	N 73 1/2	21.54	
5	N 83 1/2	21.70	
6	N 27 1/2	21.26	
7	N 65 1/2	21.48	Cut file 24 inches
8	N 65	21.32	
9	N 73	21.02	
10	N 73 1/2	21.45	
11	East	21.55	
12	N 86	21.50	
13	N 83 1/2	21.50	
14	N 70	21.80	
15	N 85	21.69	
16	N 86 1/2	21.04	
17	N 80	21.67	
18	N 82 1/2	21.02	
19	N 88 1/2	21.61	Sept 10 1834
20	N 84	21.78	
21	N 88 1/2	21.78	
22	N 88	21.50	
23	N 79	21.78	
24	N 77	21.68	
25	N 60	21.66	
		88.00	A Sugar tree 10 inches S 70° E

1	N 80	21.04	
2	N 85	21.70	
3	N 75	21.40	
4	N 65	21.61	
5	N 66 1/2	21.17	
6	N 63 1/2	21.74	
7	N 70 1/2	21.47	
8	N 64	21.00	
9	N 69 1/2	21.16	
10	N 80 1/2	21.86	
11	N 82 1/2	21.83	
12	N 88	21.02	
13	N 74	21.02	
14	N 77 1/2	21.89	
15	N 77 1/2	21.86	
16	N 83 1/2	21.72	
17	N 85 1/2	21.96	
18	N 83 1/2	21.12	
19	N 86	21.43	
20	N 85 1/2	21.30	
21	N 48 1/2	21.16	
22	N 53	21.81	
		80.00	A Beech 10 inches S 70° E

1	N 50	21.36	
2	N 01	21.37	
3	N 45	21.65	
4	N 44 1/2	21.44	
5	N 53 1/2	21.02	
6	N 71	21.23	
7	N 75 1/2	21.23	
8	N 71	21.62	
9	N 72	21.32	
10	N 46	21.64	
11	N 47 1/2	21.47	
12	N 56 1/2	21.03	
13	N 40	21.72	
14	N 71	21.72	
15	N 64	21.55	
		80.00	A Beech 10 inches S 70° E

1	N 74	21.50	
2	N 82	21.48	
3	N 83	21.41	
4	N 87	21.41	
5	N 86	21.45	
6	N 64 1/2	21.44	
7	N 78 1/2	21.54	
8	N 85 1/2	21.28	
9	N 17 1/2	21.81	
10	N 14 1/2	21.08	
11	N 22 1/2	21.68	
12	N 56 1/2	21.32	
13	N 71	21.32	
14	N 64 1/2	21.68	
15	N 71 1/2	21.45	
16	N 84 1/2	21.10	
17	N 84 1/2	21.08	
18	N 75	21.04	
19	N 68 1/2	21.19	
20	N 76	21.04	
21	N 80 1/2	21.02	
22	N 40 1/2	21.89	
23	N 46	21.47	
24	N 80 1/2	21.48	
25	N 34 1/2	21.30	
26	N 45 1/2	21.04	
27	N 38 1/2	21.06	
28	N 34 1/2	21.74	
29	N 75 1/2	21.16	
30	N 78 1/2	21.16	
31	N 66	21.67	
		80.00	Point Cut 60 inches

1	N 66	21.40	
2	N 69 1/2	21.67	
3	N 46 1/2	21.94	
4	East	21.93	
5	N 83 1/2	21.80	
6	N 61	21.02	
7	N 87 1/2	21.18	
8	N 13 1/2	21.50	
9	N 43	21.00	
10	N 37	21.56	
		80.00	Bridge over East fork of Duck

1	N 66	21.40	
2	N 69 1/2	21.67	
3	N 46 1/2	21.94	
4	East	21.93	
5	N 83 1/2	21.80	
6	N 61	21.02	
7	N 87 1/2	21.18	
8	N 13 1/2	21.50	
9	N 43	21.00	
10	N 37	21.56	
		80.00	Bridge over Archers fork of Duck Creek

Observations

Cut file 24 inches

Sept 10 1834

A Sugar tree 10 inches S 70° E

A Beech 10 inches S 70° E

A Beech 10 inches S 70° E

A Beech 10 inches S 70° E

Point Cut 60 inches

Bridge over East fork of Duck

Bridge over Archers fork of Duck Creek

A Sugar tree 15 inches N 49° E

84° E 77 Links marked 61 M

25° E 16 Links marked 62 M

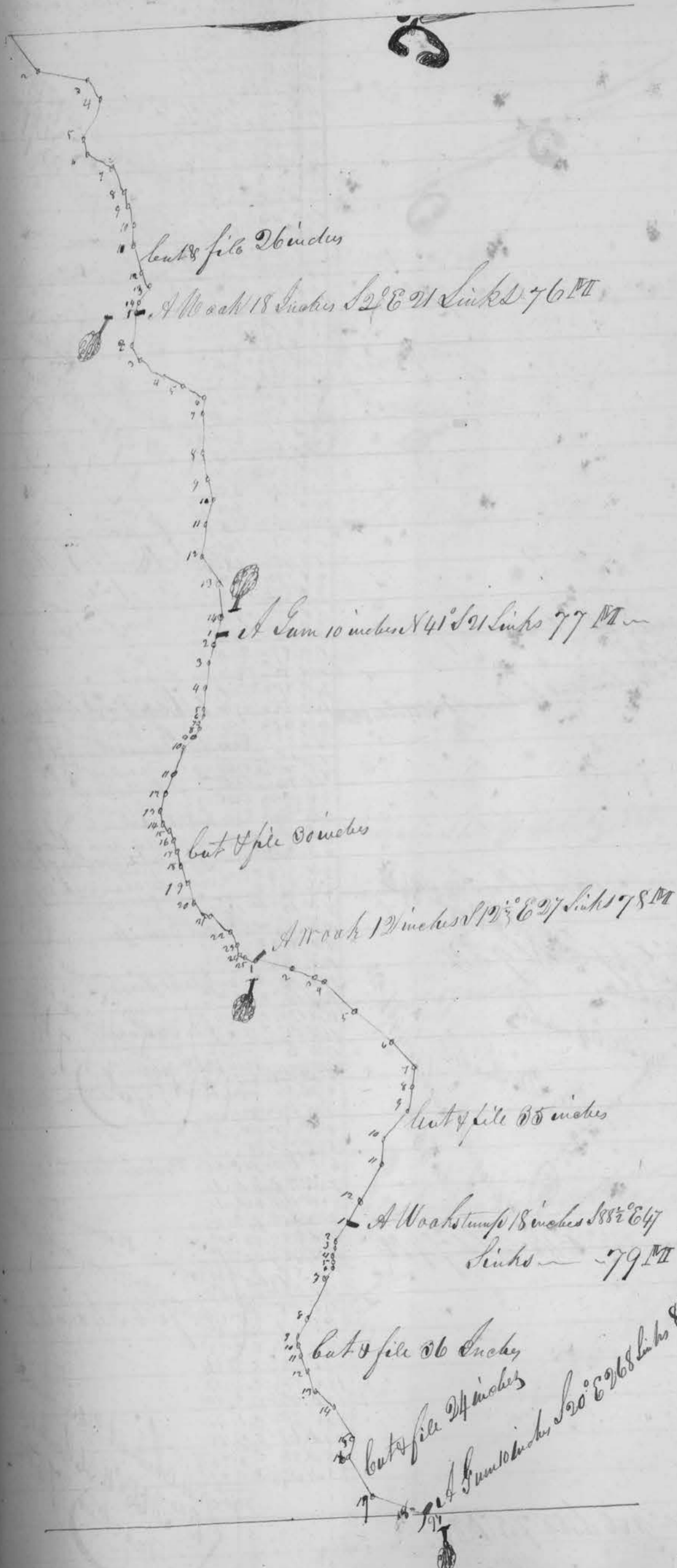
10° E 16 Links marked 63 M

22° E 10 41 Links marked 64 M

19° E 6 117 Links marked 65 M

Record of State roads Continued

No. 16



No.	Course	Distance	Observations
1	N 54 1/2 E	9.95	
2	N 11 1/2 E	10.89	
3	N 8 1/2 E	5.04	
4	N 63 E	10.00	
5	N 63 E	3.18	
6	N 35 1/2 E	6.97	
7	N 68 E	5.25	
8	N 82 1/2 E	3.28	
9	N 66 1/2 E	4.07	
10	N 88 1/2 E	5.06	
11	N 77 1/2 E	6.00	cut & file 26 inches
12	N 74 E	4.30	
13	N 52 1/2 E	3.90	
14	N 79 1/2 E	2.33	
		80.00	A No oak 18 inches S 21° E 21 Links 76 M
1	N 79 1/2 E	7.50	
2	N 57 1/2 E	4.05	
3	N 36 1/2 E	6.00	
4	N 27 1/2 E	4.23	
5	N 34 E	5.07	
6	N 83 E	3.33	
7	N 88 E	8.43	
8	N 81 E	6.20	
9	N 81 1/2 E	4.15	
10	N 67 1/2 E	5.10	
11	N 83 1/2 E	7.06	
12	N 58 1/2 E	7.15	
13	N 86 1/2 E	7.04	
14	N 74 1/2 E	4.35	
		80.00	A Gum 10 inches N 41° S 21 Links 77 M
1	N 74 1/2 E	1.81	
2	N 70 1/2 E	4.80	
3	N 79 1/2 E	5.65	
4	N 87 1/2 E	4.80	
5	N 76 1/2 E	1.04	
6	N 58 E	1.33	
7	N 80 1/2 E	1.56	
8	N 80 1/2 E	1.90	
9	N 45 1/2 E	3.61	
10	N 65 E	6.10	
11	N 66 E	4.69	
12	N 76 E	9.88	
13	N 83 1/2 E	3.04	
14	N 52 1/2 E	2.06	
15	N 72 1/2 E	2.23	
16	N 79 E	2.06	
17	N 87 1/2 E	3.02	cut & file 30 inches
18	N 67 1/2 E	2.50	
19	N 77 1/2 E	4.67	
20	N 40 E	4.21	
21	N 35 1/2 E	5.82	
22	N 63 E	8.09	
23	N 76 1/2 E	2.11	
24	N 31 1/2 E	1.50	
25	N 13 1/2 E	1.52	
		80.00	A No oak 12 inches N 19° E 27 Links 78 M
1	N 13 1/2 E	7.90	
2	N 17 E	4.50	
3	N 40 E	2.29	
4	N 44 E	9.90	
5	N 40 E	10.46	
6	N 49 1/2 E	7.62	
7	N 82 1/2 E	4.35	
8	N 73 1/2 E	5.68	
9	N 47 E	7.43	cut & file 35 inches
10	N 80 E	6.06	
11	N 57 1/2 E	9.43	
12	N 57 1/2 E	4.38	
		80.00	A No oak stump 18 in S 88° E 47 Links 79 M
1	N 52 1/2 E	4.77	
2	N 81 E	1.72	
3	N 66 E	1.77	
4	N 86 1/2 E	1.23	
5	N 86 E	1.19	
6	N 46 E	2.74	
7	N 66 1/2 E	10.69	
8	N 53 1/2 E	3.23	
9	N 86 E	2.17	
10	N 85 E	2.39	cut & file 36 inches
11	N 59 1/2 E	9.85	
12	N 71 1/2 E	4.40	
13	N 25 1/2 E	5.87	
14	N 59 1/2 E	7.75	
15	N 77 1/2 E	4.77	
16	N 62 1/2 E	10.02	
17	N 70 1/2 E	8.65	cut & file 24 inches
18	N 73 E	3.59	
		80.00	A Gum 10 inches S 20° E 26 Links 80 M

Record of State road Continued

No. 18



No.	Course	Distance	Observations
1	N 57 1/2° E	3.82	
2	N 51 1/2° E	4.16	
3	N 77 1/2° E	4.18	
4	N 84 1/2° E	7.15	
5	N 73 1/2° E	3.49	
6	N 82 1/2° E	3.11	
7	N 55 1/2° E	1.38	
8	N 70 1/2° E	1.84	
9	N 61 1/2° E	2.20	
10	N 70 1/2° E	1.69	
11	N 80 1/2° E	4.00	
12	N 56 1/2° E	1.05	Bridge 72 feet long
13	N 28 1/2° E	1.16	
14	N 72 1/2° E	1.53	
15	N 74 1/2° E	2.45	
16	N 68 1/2° W	2.39	
17	N 82 1/2° W	3.85	
18	N 56 1/2° W	2.58	
19	N 72 1/2° E	1.32	
20	N 73 1/2° E	1.31	
21	N 74 1/2° E	1.31	
22	N 6 1/2° E	1.31	
23	N 50 1/2° E	2.00	
24	N 48 1/2° E	3.41	
25	N 77 1/2° E	1.93	
26	N 74 1/2° E	2.11	Bridge 100 inches High
27	N 20 1/2° E	1.89	Cut 24 inches
28	N 9 1/2° W	1.89	Cut 63 inches
29	N 4 1/2° E	2.58	
30	N 38 1/2° E	4.00	
31	N 67 1/2° E	2.87	
32	N 63 1/2° E	2.22	
		80.00	
1	N 33 1/2° E	2.72	To the past
2	N 61 1/2° W	2.71	Crossing Sunfish creek
3	N 60 1/2° W	4.00	Sept 17th 1834
4	N 84 1/2° W	2.27	
5	N 77 1/2° W	7.95	To the past of Sunfish
6	N 83 1/2° W	1.94	Sitting to the left
7	N 64 1/2° W	2.50	Do - Do - Do
8	N 71 1/2° W	2.00	
9	N 60 1/2° W	4.33	
10	N 39 1/2° W	2.20	
11	N 17 1/2° W	2.00	
12	N 54 1/2° E	1.44	
13	N 21 1/2° E	3.04	
14	N 2 1/2° E	1.28	
15	N 64 1/2° W	1.32	
16	N 3 1/2° W	1.13	
17	N 49 1/2° W	2.06	
18	N 10 1/2° W	1.56	
19	N 13 1/2° W	1.80	
20	N 15 1/2° W	1.64	
21	N 14 1/2° W	2.00	
22	N 2 1/2° W	2.60	
23	N 33 1/2° E	2.10.22	
24	N 23 1/2° E	2.10.30	
25	N 36 1/2° E	2.0.19	
		80.00	
1	N 36 1/2° E	1.82	
2	N 10 1/2° E	4.15	
3	N 14 1/2° W	4.28	
4	N 47 1/2° W	3.94	
5	N 51 1/2° W	1.59	
6	N 15 1/2° W	4.04	
7	N 11 1/2° W	4.43	
8	N 8 1/2° E	3.87	
9	N 38 1/2° W	6.05	
10	N 30 1/2° W	2.12	
11	N 8 1/2° W	4.75	
12	N 31 1/2° E	2.0.90	
13	N 5 1/2° E	2.3.20	
14	N 10 1/2° W	4.09	
15	N 30 1/2° W	4.83	
16	N 7 1/2° E	4.10	
17	N 25 1/2° E	7.40	
18	N 51 1/2° W	3.16	
		80.00	
1	N 50 1/2° W	2.26	
2	N 18 1/2° W	18.50	
3	N 2 1/2° W	30.41	Cut 4 feet 59 inches
4	N 15 1/2° W	17.81	
5	N 52 1/2° E	3.60	
6	N 13 1/2° W	4.30	
7	N 45 1/2° W	3.12	
		80.00	
1	N 55 1/2° W	5.54	A dogwood 8 inches S 1/2°
2	N 66 1/2° W	9.45	Bridge 87 1/2° W 75
3	N 62 1/2° W	4.62	Links marked 89 M
4	N 76 1/2° E	14.32	
5	N 2 1/2° E	5.78	
6	N 14 1/2° E	9.24	
7	N 29 1/2° E	4.48	
8	N 14 1/2° E	12.00	
9	N 4 1/2° W	10.73	
10	N 25 1/2° E	5.61	
11	N 24 1/2° E	2.93	
12	N 32 1/2° E	1.13	
		80.00	
			When NW corner of corn creek
			TS. 476 8 1/2 links
			marked 90 M

Bridge 72 feet long

Bridge 100 inches High
Cut 24 inches
Cut 63 inches

An apple tree 9 inches S 1/2° W 1/2° E
S 1/2° E 16 1/2 links marked 86 M

To the past
Crossing Sunfish creek
Sept 17th 1834
To the past of Sunfish
Sitting to the left
Do - Do - Do

A Sum 10 Links S 79° W 26 Links 87 M
A Sum 4 inches S 12 1/2° E 96 Links 88 M
A Sum 10 inches S 1/2° W 75 Links 89 M
Links marked 87 M

Cut 4 feet 59 inches

A Dogwood 8 inches S 39° W 75 Links 89 M

SW Corner of Corn Creek S 1/2° E 17 Links 90 M

A Sum 10 inches S 1/2° W 75 Links 89 M
Links marked 88 M

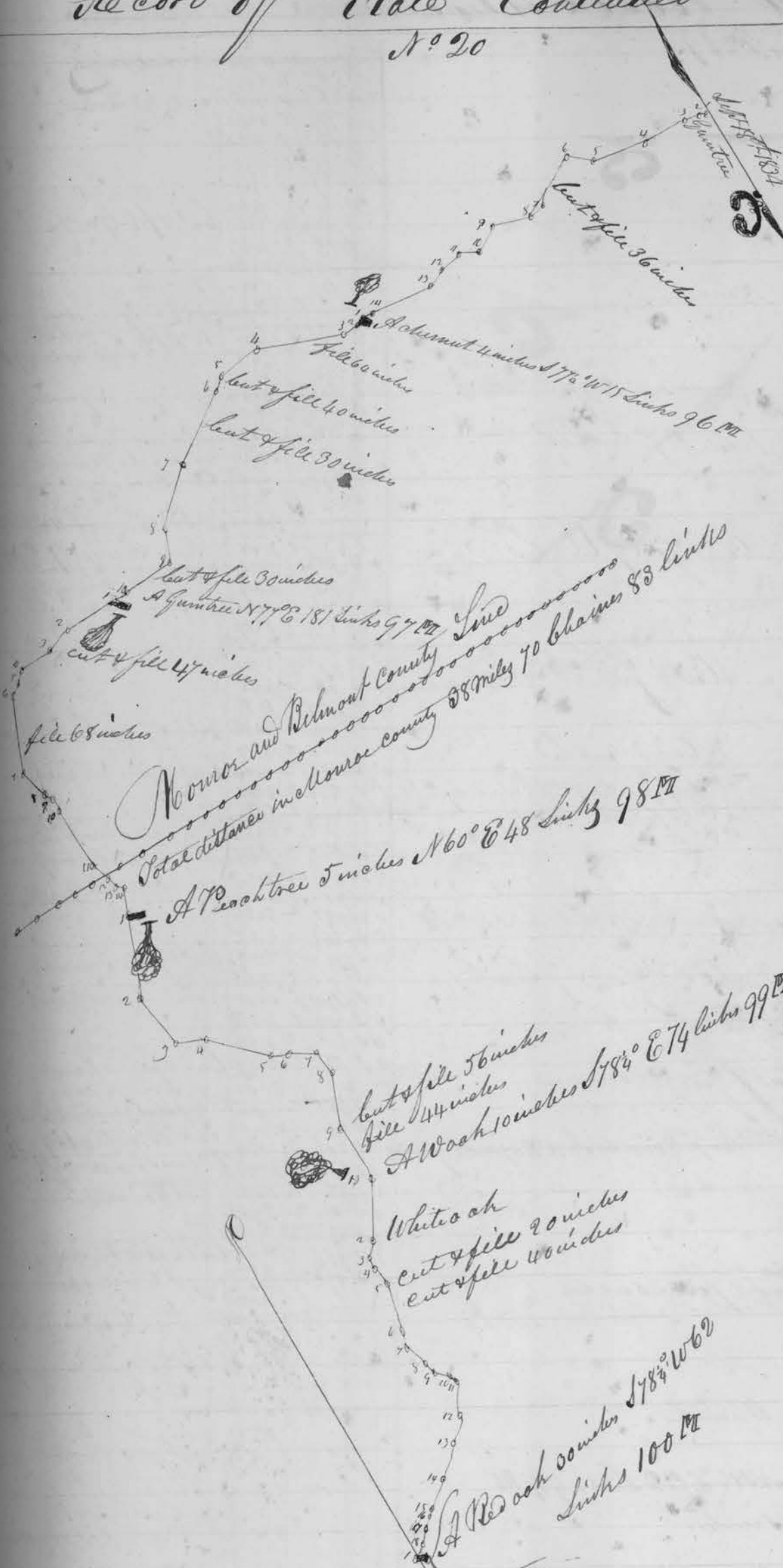
Cut 4 feet 59 inches

A dogwood 8 inches S 1/2° W 75 Links marked 89 M

When NW corner of corn creek
TS. 476 8 1/2 links
marked 90 M

Record of State Continued

No 20



No.	Compass	Observations
1	S 62° E 5.2	Sept. 18 th 1834
2	S 83° E 3.68	
3	S 87° E 7.50	
4	S 82° E 10.66	
5	S 57° E 4.72	Cut & fill 36 inches
6	N 79° E 10.50	
7	N 73° E 9.10	
8	S 60° E 7.50	
9	N 70° E 5.50	
10	S 77° E 9.94	
11	N 66° E 4.01	
12	N 88° E 3.50	
13	S 50° E 12.16	
14	S 52° E 2.37	
		80.00
1	S 86° E 1.32	
2	N 87° E 3.43	
3	S 69° E 16.38	file 64 inches
4	N 86° E 8.15	
5	N 50° E 3.27	cut & fill 40 inches
6	N 57° E 15.76	Cut & fill 30 inch
7	N 46° E 12.50	
8	N 22° E 6.66	cut & fill 30 inches
9	N 85° E 9.66	
10	N 88° E 2.87	
		80.00
1	N 88° E 10.50	
2	N 70° E 5.40	
3	S 88° E 7.38	cut & fill 47 inches
4	N 47° E 3.00	
5	N 60° E 2.91	file 68 inches
6	N 19° E 14.50	
7	N 18° W 6.40	
8	N 37° W 1.46	
9	N 1° E 2.90	
10	N 3° W 12.88	
11	N 21° W 2.94	
12	N 19° W 2.50	
13	N 41° W 7.24	
14	N 21° E 5.30	
		80.00
1	N 71° E 16.40	
2	N 73° W 10.16	
3	N 67° W 5.80	
4	N 64° W 12.32	
5	N 71° W 4.08	
6	N 57° W 4.55	
7	N 10° W 5.17	
8	N 28° E 10.05	
9	N 22° W 11.47	
		80.00
1	N 79° E 12.80	
2	N 11° E 2.90	
3	N 5° E 2.78	
4	N 6° W 3.71	
5	N 17° E 10.00	cut & fill 20 inches cut & fill 40 inches
6	N 24° E 3.00	
7	N 15° W 4.86	
8	N 25° E 2.60	
9	N 45° W 2.83	
10	N 17° W 1.39	
11	N 26° E 6.89	
12	N 38° E 4.84	
13	N 66° E 7.42	
14	N 32° E 6.00	
15	N 33° E 12.4	
16	N 14° E 2.58	
17	N 38° E 3.22	
18	N 37° E 1.74	
		80.00

Sept. 18th 1834
Cut & fill 36 inches
Acherunt 4 inches S 77° W 15 Links 96 M
w 154 Links marked 96 M

Monroe and Belmont County Line
Total distance in Monroe County 38 miles 70 chains 83 links
A Peachtree 5 inches N 60° E 48 Links 98 M
Total distance in Monroe County 38 miles 70 chains 83 links

A Peachtree 5 inches S 78° E
N 60° E 48 Links marked 98 M

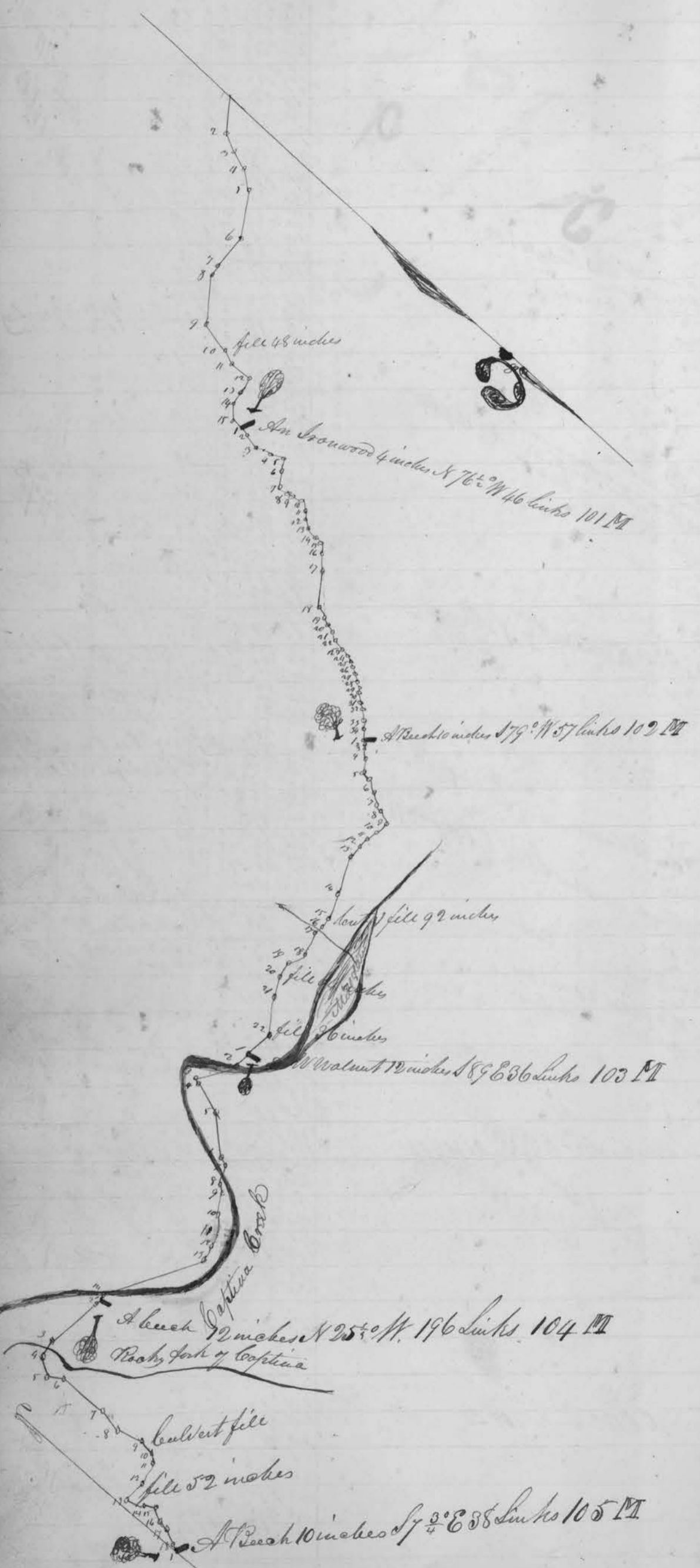
cut & fill 56 inches fill 40 inches
A W oak 10 inches S 78° E 74 links 99 M
E 74 links marked 99 M
white oak

White oak
cut & fill 20 inches cut & fill 40 inches
A Red oak 30 inches S 78° W 60 Links 100 M
w 62 Links marked 100 M

Record of State road Continued

No. 91

[Handwritten flourish]



No.	Course	Distance	Remarks
1	N 57 1/2 E	7.71	
2	N 76 E	4.00	
3	N 90 1/2 E	4.52	
4	N 88 E	4.68	
5	N 85 1/2 E	10.98	
6	N 85 1/2 E	7.87	
7	N 74 E	2.24	
8	N 57 1/2 E	11.00	
9	N 11 1/2 E	6.55	fill 48 inches
10	N 18 1/2 E	3.82	
11	N 8 E	4.86	
12	N 70 E	2.88	
13	N 80 1/2 E	3.50	
14	N 80 E	3.60	
15	N 82 E	2.09	
			80.00
16	N 8 1/2 E	3.10	An ironwood 4 inches
17	N 12 E	2.30	S 76 1/2 W 46 links
18	N 28 W	2.39	marked 101 M
19	N 52 E	3.98	Sept 19 1834
20	N 57 E	2.15	
21	N 9 E	1.26	
22	N 1 E	2.47	
23	N 13 1/2 W	2.65	
24	N 33 E	1.42	
25	N 36 1/2 E	2.13	
26	N 20 1/2 E	2.92	
27	N 70 E	1.85	
28	N 14 E	2.93	
29	N 50 1/2 E	3.26	
30	N 36 E	7.60	
31	N 55 1/2 E	2.98	
32	N 27 E	1.67	
33	N 30 1/2 E	1.62	
34	N 13 E	2.54	
35	N 20 1/2 E	1.74	
36	N 8 E	1.70	
37	N 13 E	1.62	
38	N 10 E	1.47	
39	N 22 1/2 E	1.86	
40	N 34 E	1.65	
41	N 23 E	1.45	
42	N 40 1/2 E	1.91	
43	N 59 1/2 E	2.10	
44	N 89 1/2 E	1.61	
45	N 36 1/2 E	2.70	
46	N 43 1/2 E	1.80	
47	N 22 E	3.08	
48	N 40 1/2 E	8.00	
			80.00
1	N 40 1/2 E	1.01	
2	N 47 1/2 E	2.14	
3	N 46 1/2 E	2.31	
4	N 40 1/2 E	2.15	
5	N 30 1/2 E	3.38	
6	N 20 1/2 E	2.81	
7	N 26 1/2 E	1.98	
8	N 25 1/2 E	3.38	
9	N 80 E	2.43	
10	N 71 E	2.91	
11	N 89 E	2.58	
12	N 88 E	2.56	
13	N 66 1/2 E	8.70	
14	N 70 1/2 E	5.62	
15	N 85 1/2 E	2.46	
16	N 87 1/2 E	1.45	beech 10 inches
17	N 80 1/2 E	5.45	
18	N 67 1/2 E	3.95	
19	N 81 E	3.96	fill 6 1/2 inches
20	N 63 1/2 E	4.90	
21	N 54 1/2 E	8.10	
22	N 81 1/2 E	6.29	cut 10 inches
			80.00
1	N 84 1/2 E	3.64	
2	N 55 E	9.19	
3	N 17 E	7.16	links marked 103 M
4	N 18 1/2 E	7.00	cut 10 inches
5	N 40 E	9.95	
6	N 8 1/2 E	1.50	
7	N 57 1/2 E	4.71	to Captina Creek
8	N 39 1/2 E	1.88	
9	N 60 1/2 E	4.96	
10	N 49 1/2 E	5.00	
11	N 81 1/2 E	3.22	
12	N 80 1/2 E	3.56	
13	N 60 E	38.11	to Captina creek
14	N 69 1/2 E	6.91	
			80.00
1	N 87 E	11.82	A beech 10 inches
2	N 82 1/2 E	13.06	N 25 1/2 W 196 links
3	N 81 E	3.57	marked 104 M
4	N 39 1/2 E	4.00	crossing the mouth of
5	N 39 1/2 W	3.80	Rocky fork of Captina
6	N 5 1/2 W	11.30	Creek
7	N 11 1/2 E	5.63	Sept 20 1834
8	N 21 E	5.67	
9	N 8 E	3.40	beech 10 inches
10	N 40 E	2.24	
11	N 79 1/2 E	21.72	
12	N 84 1/2 E	5.02	fill 5 1/2 inches
13	N 17 W	5.46	
14	N 26 W	2.62	
15	N 27 1/2 E	2.80	
16	N 53 E	2.27	
17	N 23 E	2.61	
18	N 13 E	7.1	
			80.00

[Handwritten notes:]
 An ironwood 4 inches
 S 76 1/2 W 46 links
 marked 101 M
 Sept 19 1834
 A beech 10 inches
 S 79 1/2 W 57 links
 marked 102 M

[Handwritten notes:]
 Walnut 10 inches
 S 89 E 36 links
 marked 103 M
 Captina Creek

[Handwritten notes:]
 A beech 9 1/2 inches
 N 25 1/2 W 196 links
 marked 104 M
 Rocky fork of Captina
 Creek
 Sept 20 1834

[Handwritten notes:]
 A beech 10 inches
 S 7 3/4 E 38 links
 marked 105 M