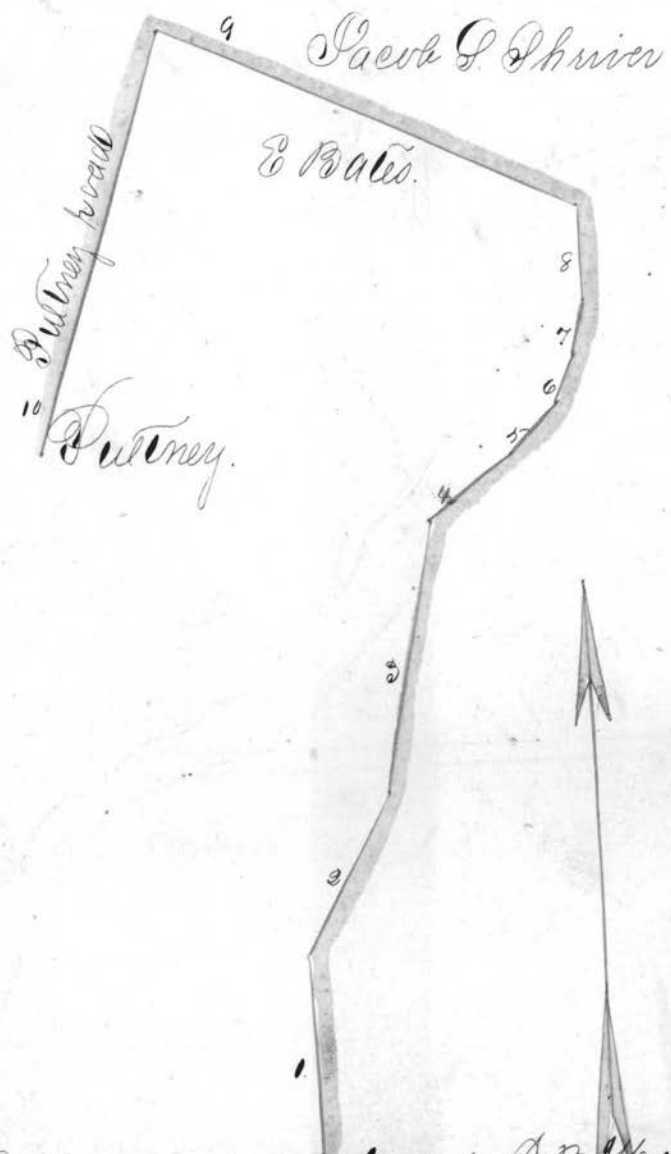


340. Plat of a County road beginning at John B. Woffmans and running from thence to the town of Putney as surveyed by Charles Deass A.D. 1850

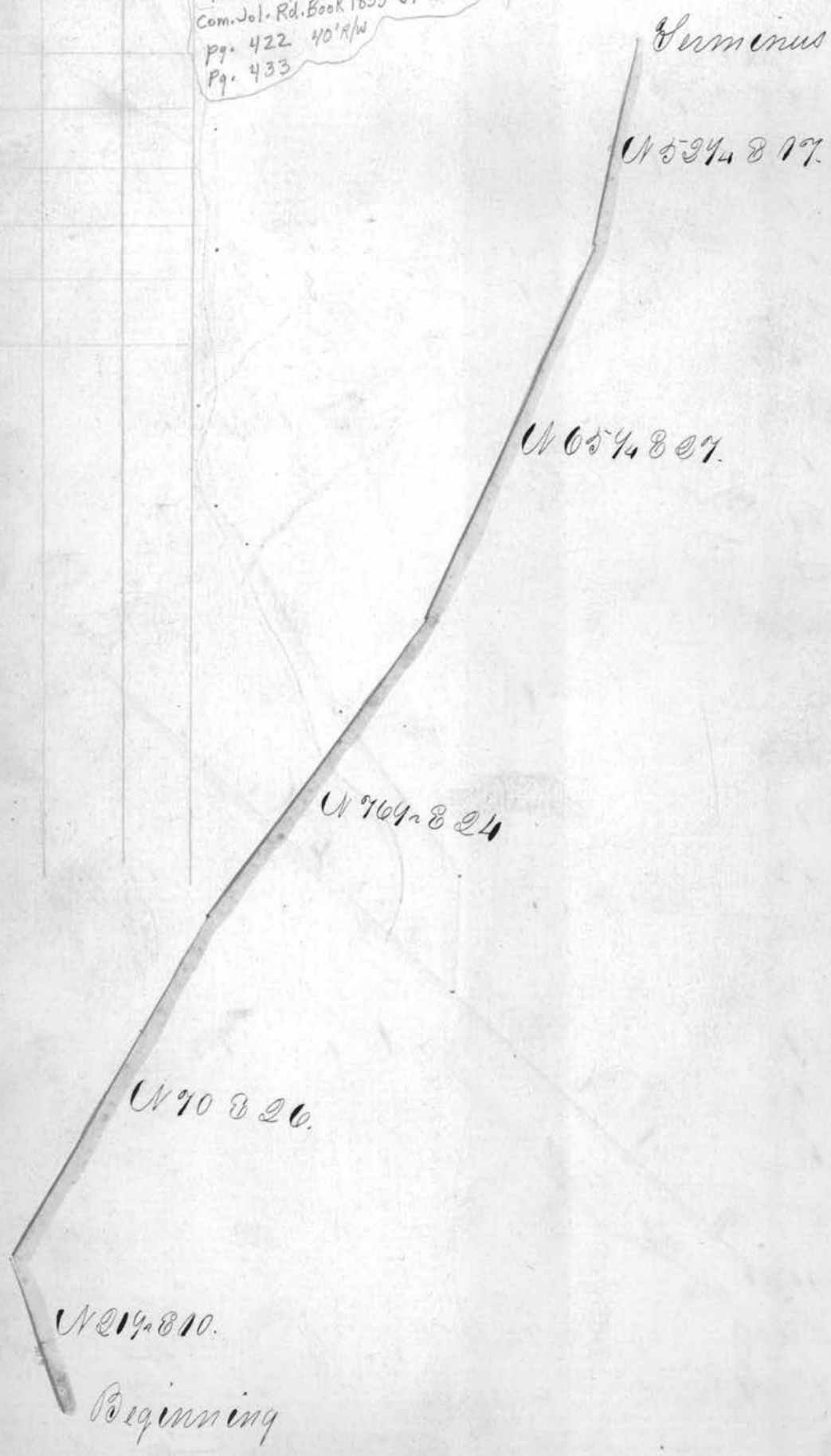
No	Course	Dist	Mon
1	S 2 E	30.	Upst.
2	S 29 1/2 W	30.	
3	S 12 1/2 W	23.	
4	S 54 1/2 W	16.50	
5	S 45 W	10.	Down
6	S 33 W	8.	"
7	S 17 W	9.50	Upst
8	S 2 E	16.	
9	S 65 1/2 E	72.	
10	N 28 E	48.50	
		285.50	



Beginning near a W. gate. P. B. Woffman U.S. Cor

Plan of an alteration on the Mount Zion  
and Bellair road beginning opposite  
Joseph Cross and ending opposite Jacob  
Roodger as surveyed by Charles Dehus 1850

See pg. 237 this Volume  
Proceedings  
Com. Jol. Rd. Book 1835-57 No. 4  
Pg. 422 40' R/W  
Pg. 433





Philip Davis  
Gate

Beginning

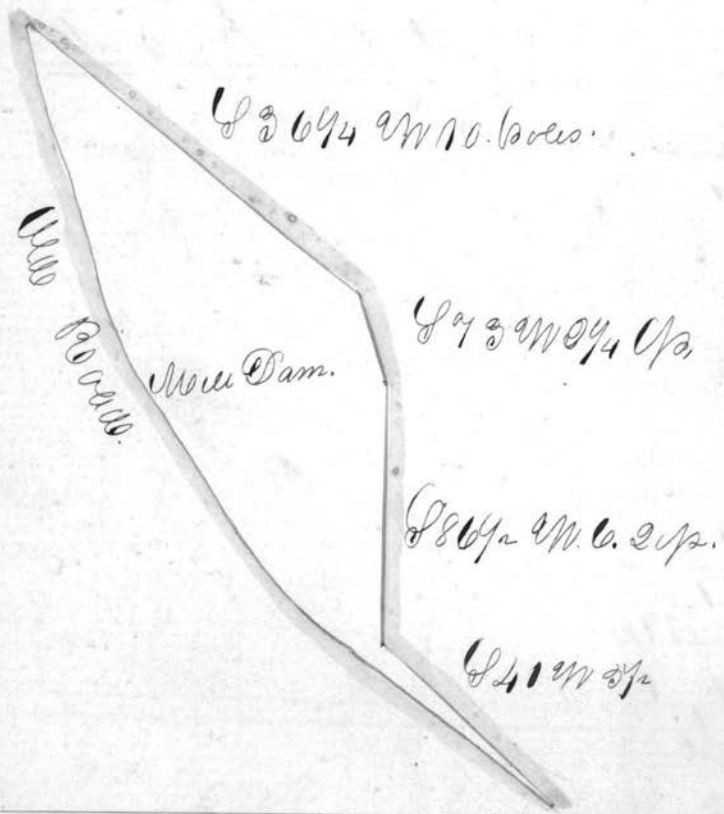
N 26 E 60 9/100.

Sewells Hill

N 64 9/10 E. 47 2/100.

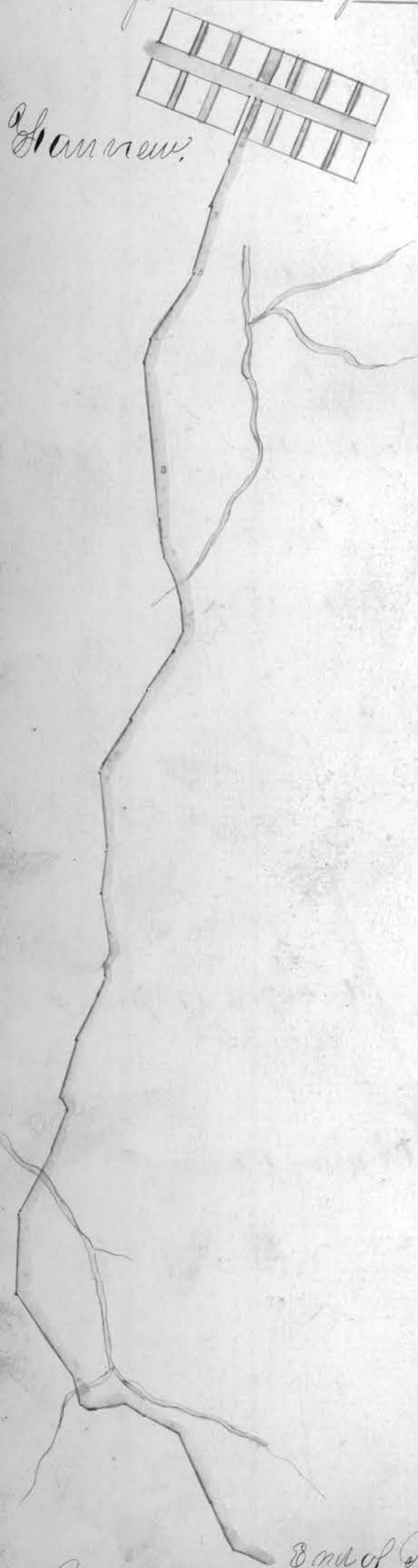
Nancy Davis

34  
 That of an alteration on the road on  
 Glens run road through the Lands of  
 Thomas Mitchell and Mr. Bunker  
 as surveyed by Thomas Mitchell A.D. 1850





Plan of the State road beginning at  
 Harview in Gurnsey Co. and running  
 thence thro Barnsville, Boston and Martins  
 burgh, and thence to Woodsfield in Meigs  
 County as surveyed by Chas. Dehass, 1850



No.	Course	Dist	Chm.
1	S 24 1/2 W	27	Upst
2	S 31 1/2 W	21	
3	S 24 1/2 W	24	
4	S 36 W	10	
5	S 18 1/2 W	8	
6	S E 3	65	
7	S 2 1/2 E	10	
8	S 8 E	6	
9	S 20 1/2 E	10	
10	S 25 E	8	
11	South	12	To run at Mr. Griffes
12	S 25 E	8	
13	S 36 1/2 W	20	
14	S 28 1/2 W	12	
15	S 33 1/2 W	25	
16	S 3 E	32	
17	S 19 1/2 W	17	
18	S 4 1/2 E	23	
19	S 13 1/2 W	6	
20	S 30 1/2 W	21	
21	S 27 1/2 W	9	
22	S 27 1/2 W	20	
23	S 16 1/2 W	24	
24	S 15 E	6	
25	S 25 1/2 W	10	
26	S 27 1/2 W	30	
27	S 19 1/2 W	31	
28	S 31 1/2 E	210	
29	S 13 1/2 E	11	
30	S 5 1/2 E	2	
31	S 7 1/2 E	2	
32	N 82 1/2 E	11	
33	S 65 E	10	
34	S 56 E	14	
35	S 27 1/2 E	31	
36	S 25 E	31	
37	S 64 E	14	
38	S 34 E	8	

End of Dist.  
 Continued on 243

66 1/2 W. 2 m 25 1/2

Continued from page 342

39 S 9 E 32  
 40 S 91 E 17  
 41 S 80 E 30  
 42 East 10.  
 43 N 51 E 20.  
 44 S 82 1/2 E 7.  
 45 S 89 E 17  
 46 S 89 1/2 E 7  
 47 S 82 1/4 E 13.  
 48 S 82 1/4 E 6.  
 49 S 84 1/4 E 13.  
 50 S 77 1/2 E 2.  
 51 East 2.  
 52 N 67 1/2 E 8.  
 53 N 60 E 28.  
 54 N 87 1/2 E 12.  
 55 S 82 1/2 E 31  
 56 S 27 E 35  
 57 S 70 1/2 E 24  
 58 S 77 1/2 W 10.  
 59 S 39 W 19  
 60 South 20.  
 61 S 77 1/2 W 11.  
 62 S 80 1/2 E 2.  
 63 N 85 E 12.  
 64 S 71 E 33.  
 65 S 86 E 19  
 66 S 85 1/2 E 22.  
 67 S 63 E 9  
 68 S 70 E 17  
 69 S 81 1/2 E 17  
 70 S 66 1/2 E 24  
 71 S 82 1/2 E 4.

Opats

Co. Line  
Belmont of Bannock

County  
Line

Beginning of  
Sec 2.

Belmont of Bannock

Merrill

Davis

Gibson



67 \$600 9  
 68 \$700 17  
 69 \$2100 17  
 70 \$66 1/2 24  
 71 \$200 21  
 72 \$54 1/4 20  
 73 \$20 2  
 74 \$66 1/2 24  
 75 \$14 2  
 76 \$12 16  
 77 \$52 1/2 6  
 78 \$14 1/4 13  
 79 \$66 1/2 19  
 80 \$181 16  
 81 \$66 1/2 8  
 82 \$25 1/2 20  
 83 \$15 1/2 8  
 84 \$26 20

Total 733 1/2 com 98 1/2

85 \$00 8  
 86 \$37 15  
 87 \$64 20  
 88 \$83 10  
 89 \$16 56  
 90 \$21 14  
 91 \$7 1/4 28  
 92 \$34 1/4 22  
 93 \$9 28  
 94 \$10 1/4 15  
 95 \$21 1/4 5  
 96 \$5 1/4 5  
 97 \$66 9  
 98 \$8 1/4 5  
 99 \$36 14  
 100 \$56 1/2 6  
 1 \$8 1/4 10  
 2 \$45 2  
 3 \$56 20  
 4 \$66 15  
 5 \$83 1/2 26  
 6 \$66 7  
 7 \$80 1/2 30

Gibson

Cross'

Beginning of Sec 3.

End of Sec 3.

John Phillips

Upsto.

to John Phillips

of the  
Greens

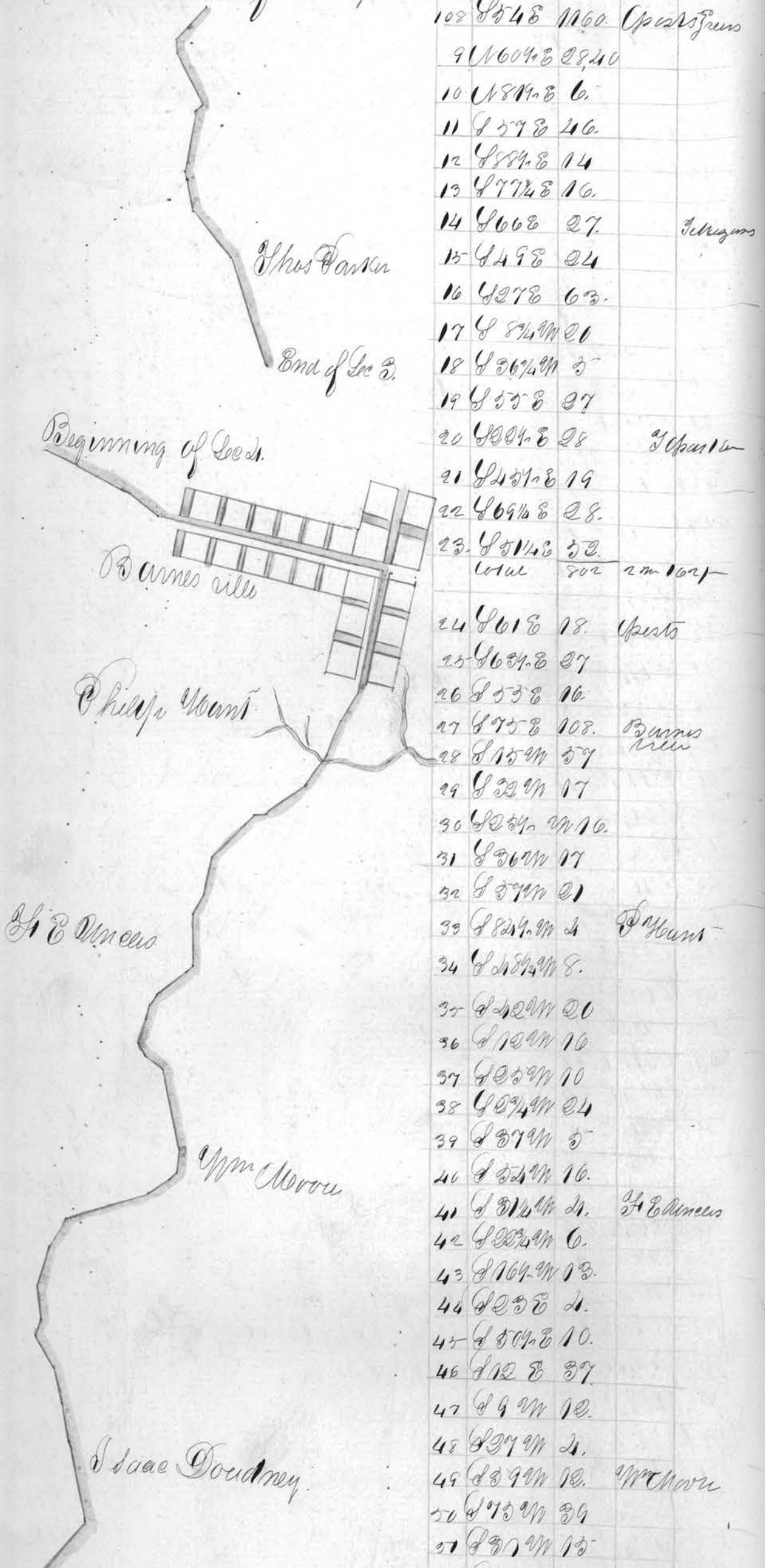
To the  
Greens.

James Wiggins

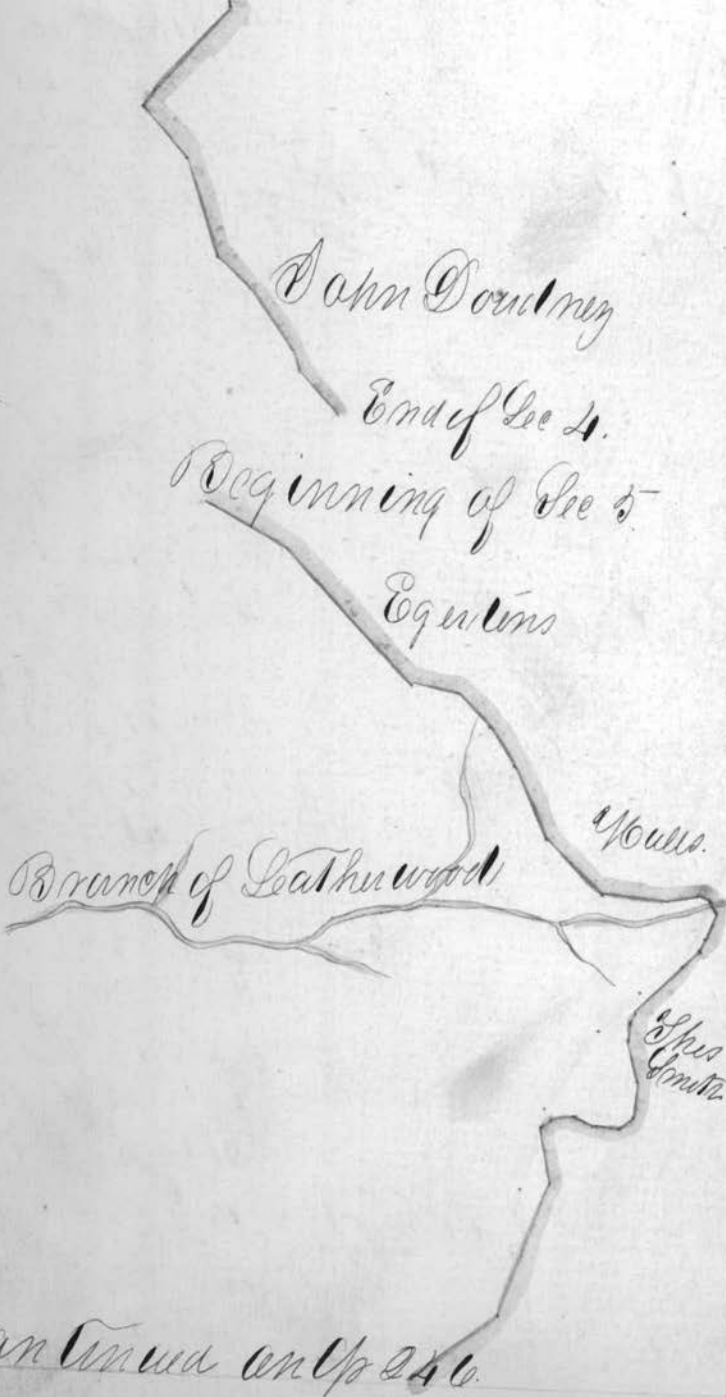
Continued on p 344



Continued from Up 34s.



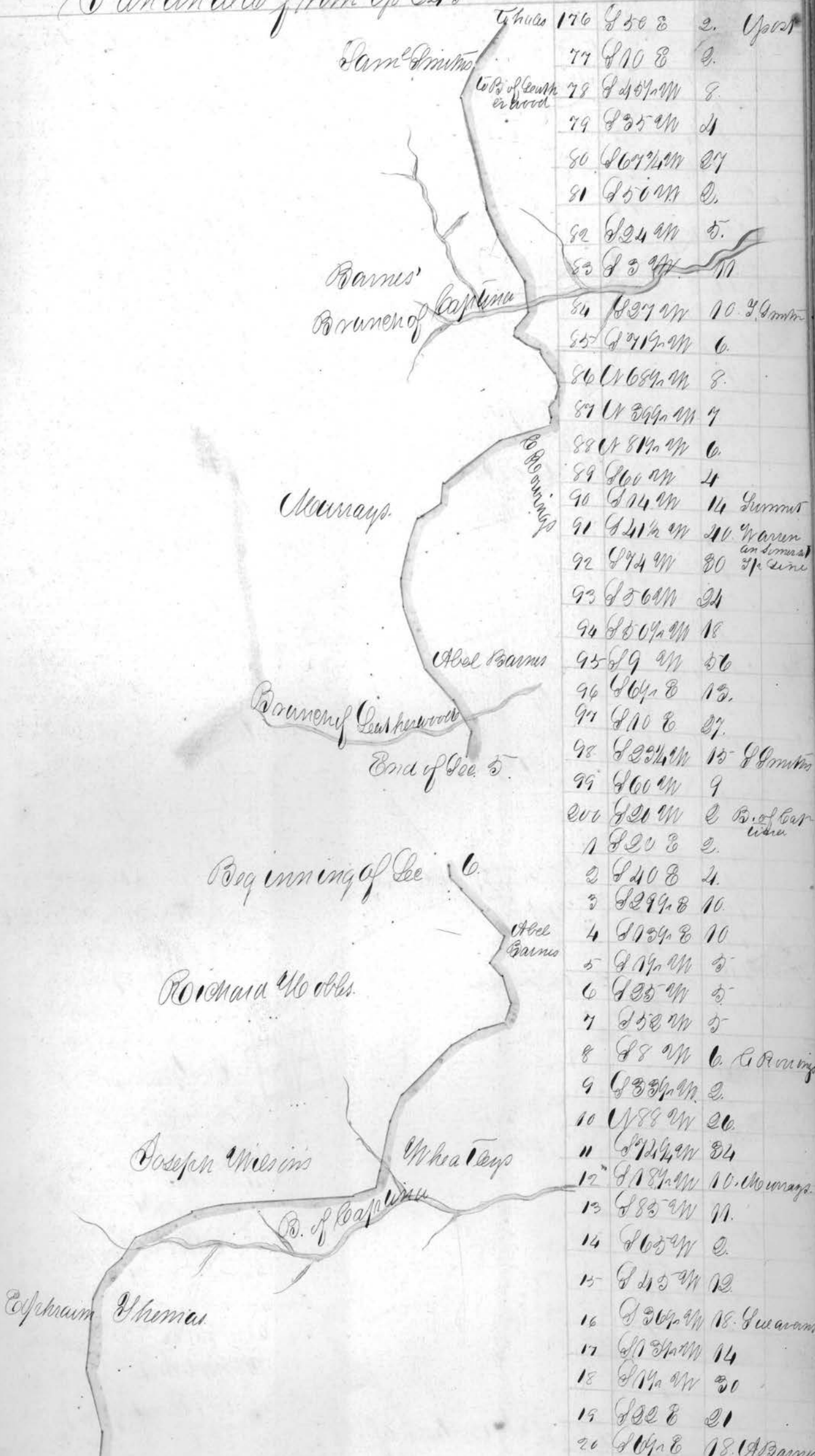
102	\$548	1160.	Up 24 1/2
9	11604.8	28.40	
10	11811.8	6.	
11	8578	26.	
12	8894.8	14	
13	8774.8	16.	
14	8668	27.	Phillips
15	8498	24	
16	8278	63.	
17	8874.91	20	
18	8367.41	5	
19	8558	27	
20	8004.8	28	Up 1 1/2
21	8451.8	19	
22	8691.8	28.	
23.	8511.8	53.	
Total		802	2 m 1021
24	8618	18.	Up 2 1/2
25	8691.8	27	
26	8538	16	
27	8758	108.	Barnesville
28	8159.91	37	
29	832.91	17	
30	8034.91	10.	
31	836.91	17	
32	837.91	21	
33	8824.91	2	Philip Mount
34	8124.91	8.	
35	842.91	20	
36	812.91	10	
37	803.91	10	
38	8074.91	24	
39	837.91	5	
40	852.91	16.	
41	8312.91	21.	A. E. Daniels
42	833.91	6.	
43	8164.91	13.	
44	8238	21.	
45	8504.8	10.	
46	8128	37.	
47	89.91	10.	
48	837.91	21.	
49	839.91	10.	Wm. Worou
50	873.91	39	
51	837.91	13	



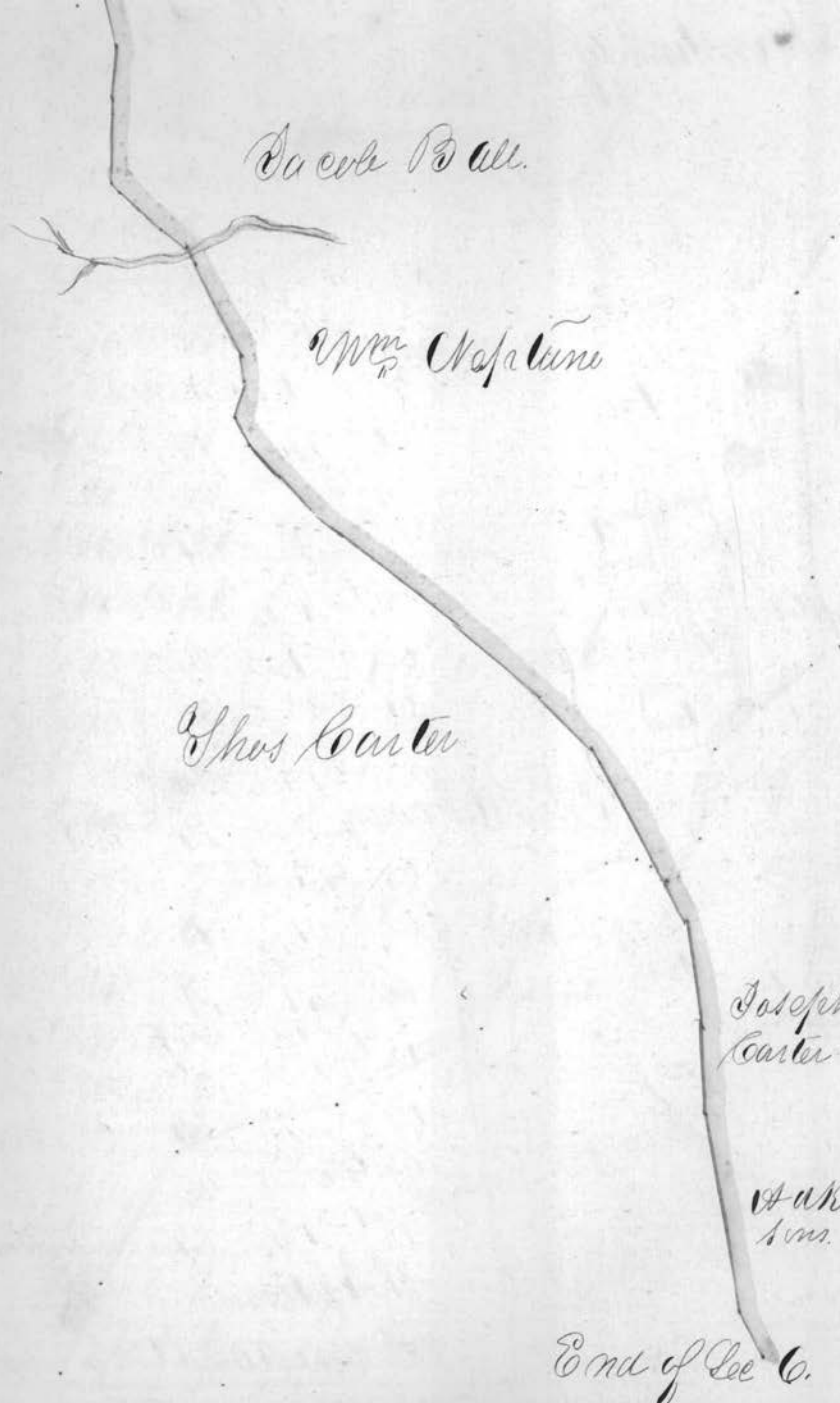
50	S 7 1/2 W 29	
51	S 8 1/2 W 15	
52	S 12 W 19	
53	S 10 W 15	
54	S 10 W 8	
55	S 8 1/2 W 15	
56	S 14 W 17	
57	S 10 E 22	
58	S 9 1/2 E 26	
59	S 10 1/2 W 23	J. Downing
60	S 8 1/2 W 5	
61	S 12 E 19	
62	S 19 E 29	
63	S 13 1/2 E 14	J. Downing
64	S 26 E 20	
65	S 26 1/2 E 6	
66	S 17 E 19	
67	S 16 E 26	Don 1907 - Spert
68	S 23 1/2 E 24	
69	S 60 E 12	
70	S 21 1/2 E 14	Equations
71	S 10 1/2 E 12	
72	S 14 1/2 E 22	
73	S 24 E 22	
74	S 6 E 17	
75	S 79 E 10	

Continued on p 246.

Continued from p 245



Abel Barnes	176	850	8	2	Upst
Same distance	77	810	8	2	
Top of South in wood	78	840 1/2	W	8	
	79	835	W	11	
	80	869 1/2	W	27	
	81	850	W	0	
	82	824	W	5	
	83	83	W	11	
Barnes Barnes of Capeana	84	837	W	10	2. Barnes
	85	849 1/2	W	6	
	86	868 1/2	W	8	
	87	899	W	7	
	88	819	W	6	
	89	860	W	14	
	90	874	W	14	Barnes
	91	821 1/2	W	20	Warren (in summer) of line
	92	874	W	30	
	93	856	W	24	
	94	850 1/2	W	18	
Abel Barnes	95	89	W	56	
	96	864	8	15	
	97	810	8	27	
	98	822 1/2	W	15	2. Barnes
	99	860	W	9	
	200	820	W	0	B. of bar where
	1	820	8	2	
	2	840	8	4	
	3	829	8	10	
	4	819 1/2	8	10	
	5	819	W	5	
	6	835	W	5	
	7	852	W	5	
	8	88	W	6	Beginning
	9	833 1/2	W	2	
	10	888	W	20	
	11	872 1/2	W	24	
	12	818 1/2	W	10	Murray
	13	885	W	11	
	14	865	W	0	
	15	815	W	12	
	16	836 1/2	W	18	See anam
	17	811	W	14	
	18	819	W	30	
	19	822	8	21	
	20	804	8	18	Abel Barnes



Jacob Ball.

Wm. Chapman

Josh Carter

Joseph Carter

Wm. Kin-sons

End of Sec 6.

Continued on Page 217.

- |    |            |                      |                               |
|----|------------|----------------------|-------------------------------|
| 19 | S 22 E     | 21                   |                               |
| 20 | S 1/4 E    | 18.                  | Adams                         |
| 21 | S 1/4 W    | 18.                  |                               |
| 22 | S 2 1/2 W  | 12.                  | 12 <sup>1/2</sup> miles       |
| 23 | S 1/2 W    | 210 <sup>1/2</sup> m | 200 1/2 <sup>1/2</sup> Up 100 |
| 24 | S 25 E     | 9                    | "                             |
| 25 | S 3/4 E    | 13.                  | "                             |
| 26 | S 25 E     | 10                   | "                             |
| 27 | S 20 W     | 5-                   |                               |
| 28 | S 3/4 W    | 9                    |                               |
| 29 | S 1/4 E    | 7                    |                               |
| 30 | S 2 1/2 E  | 13.                  |                               |
| 31 | S 35 1/4 W | 9                    |                               |
| 32 | S 85 W     | 14                   |                               |
| 33 | S 77 1/2 W | 15-                  |                               |
| 34 | S 37 1/2 W | 34                   |                               |
| 35 | S 41 W     | 13.                  |                               |
| 36 | S 25 W     | 8.                   |                               |
| 37 | S 33 1/4 W | 15-                  |                               |
| 38 | S 23 W     | 9                    | 1/2 miles of road             |
| 39 | S 75 W     | 11.                  |                               |
| 40 | N 79 1/2 W | 60                   | S 1/2 miles                   |
| 41 | N 84 1/2 W | 16.                  |                               |
| 42 | S 78 W     | 31                   |                               |
| 43 | S 50 W     | 11.                  |                               |
| 44 | S 64 W     | 7.                   |                               |



Continued from Page 217

445 S 1/2 N 16 Westo. Beginning of Sec 9.  
 446 S 2/2 N 30 to 3 Thomas.

47 South 24 Cove run  
 48 S 18 1/2 N 14  
 49 S 18 1/2 N 23 Adkinson's  
 50 S 20 1/2 E 4 in ruin

51 S 38 1/2 E 14  
 52 S 21 1/2 E 9  
 53 S 17 1/2 E 6 Ezra Johnston.  
 54 S 11 E 28

55 S 3 N 7  
 56 S 22 1/2 N 10  
 57 S 10 1/2 E 10  
 58 S 31 1/2 N 12 to 11 Mrs. Cephus

59 S 24 1/2 E 14  
 60 S 37 1/2 E 54 Westo Estate.  
 61 S 34 E 30.  
 62 S 28 1/2 E 20.

63 S 7 N 30.  
 64 S 34 E 27.  
 65 S 1 N 30.  
 66 S 10 3/4 N 24

67 S 3 1/2 N 38.  
 68 S 15 E 15  
 69 S 6 N 25 1/2  
 70 S 20 N 9.  
 71 S 32 E 7  
 72 S 14 N 12  
 73 S 56 N 30  
 74 S 76 1/2 N 20  
 75 S 24 1/4 N 14  
 76 S 11 1/2 N 7. on op. Sec Line

77 South 30.  
 78 S 49 E 30.  
 79 S 31 E 29  
 80 S 56 1/2 E 19.  
 81 S 20 E 30. to 8 Wilsons  
 82 S 41 E 30.  
 83 S 80 1/4 E 35.  
 84 S 66 1/2 E 18.

Wm Porter

on 21 3/2.  
 Westo.

to comparison  
 creek road  
 Dec 1850  
 15 miles



Boston

Israel Hagman

86 S 28 E 10.

87 S 7 1/2 E 14.

88 S 12 W 8.

89 South 28.

90 S 32 1/2 W 38.

91 S 10 1/2 W 20.

92 South 21.

93 S 7 1/2 E 30.

94 S 7 1/4 E 20.

95 S 31 3/4 E 52.

96 S 6 1/2 E 20.

97 S 6 1/2 W 28.

98 S 10 1/4 E 20.

99 S 33 1/4 E 30.

100 S 22 E 12.

1 S 51 E 10.

2 S 21 1/2 E 24.

3 S 23 E 18.

4 S 27 E 19.

5 S 7 E 10.

6 N 87 1/2 E 14.

7 S 73 1/2 E 6.

8 S 60 E 20.

9 S 32 E 6.

10 S 24 E 24.

11 South 29.

12 S 57 E 10.

13 S 40 E 18.

14 S 2 E 80.

15 S 15 1/2 W 18.

16 S 5 E 20.

17 S 56 E 20.

18 S 70 E 6.

19 S 56 1/2 E 35.

20 S 25 1/4 E 26.

21 S 28 1/4 E 8.

To Gas  
Cyma

Beginning of Sec 8.

School house

End of Sec 7.

To E end of  
Boston  
W. end of  
mistaken

To S. Taylor's

John Chaney's

27 1/2 = 20m @ 350 ft.  
Upset

Historus  
Barnmont and Mon see

County Gen

Continued on page 249.

Continued from Page 348

- 22 W 218 4 Post.
- 23 East 4.
- 24 W 408 6
- 25 W 378 4
- 26 S 834.8 8.
- 27 S 978 10.
- 28 S 2148 13. to Alutonus.
- 29 S 688 218
- 30 S 688 218
- 31 S 834.8 24
- 32 S 978 24
- 33 S 33348 24
- 34 S 279.8 28. to Boy M Co Line
- 35 S 1928 20
- 36 S 1928 91 to Hoques.
- 37 S 33348 28.
- 38 South 41 to School house
- 39 S 99.4 13.
- 40 S 144 8.
- 41 South 7.
- 42 S 368 3.
- 43 S 638 3
- 44 S 8048 5
- 45 W 7548 2.
- 46 S 958 2.
- 47 S 458 2.
- 48 S 158 2.
- 49 S 15 9 9.
- 50 S 274 8 6.
- 51 S 364 8 30 to Urepatonus
- 52 S 664 8 8.
- 53 S 584 8 13.
- 54 S 664 8 9.
- 55 S 65 8 9 to D Camp
- 56 S 568 11.
- 57 South 13
- 58 S 35 4 2.
- 59 S 90 4 2
- 60 West 6
- 61 S 60 4 2. to Ambroses

Hoques.

School house.

David Campsons

End of Dec 8.

Beginning of Dec 9.

Remainder of Dec 9

- 97 S 394 5 Post
- 98 S 234 5
- 99 S 514 5
- 400 S 394 5
- 1 S 34 8 10
- 2 S 634 8 12.
- 3 S 514 8 11.
- 4 S 41 8 7
- 5 S 50 8 7
- 6 S 19 8 6.
- 7 South 3
- 8 S 25 4 5
- 9 S 10 8 2.
- 10 S 24 8 4
- 11 S 34 9 10
- 12 S 41 4 6.
- 13 S 21 4 10 5ft fill
- 14 S 2 4 6
- 15 S 34 8 6.
- 16 S 34 8 9
- 17 S 13 8 6.
- 18 South 6.
- 19 S 234 4 6



60 West 6  
 61 100 AM 2  
 62 150 AM 2  
 63 South 2  
 64 100 8 4  
 65 150 8 7  
 66 150 8 8  
 67 150 8 10  
 68 150 8 9  
 69 150 8 11  
 70 150 8 9  
 71 150 AM 2  
 72 150 AM 2  
 73 150 AM 11  
 74 150 8 82  
 75 150 AM 20  
 76 150 AM 18  
 77 150 AM 20  
 78 150 AM 21  
 79 150 AM 22  
 80 150 8 2  
 81 150 8 2  
 82 150 8 3  
 83 150 8 7  
 84 150 8 6  
 85 150 8 6  
 86 150 8 15  
 87 150 8 2  
 88 150 8 6  
 89 150 8 4  
 90 150 8 7  
 91 150 8 7  
 92 150 8 9  
 93 150 8 10  
 94 150 8 14  
 95 150 8 3  
 96 150 8 4

W. Ambricks

Chas Barnes  
 W. Ambricks

Monument

D. Compton

Moutens bridge

End of  
 Sec 9

Beginning of  
 Sec 10

Yanders

Y Roads

Continued on 450

17 150 8 6  
 18 South 6  
 19 150 8 6  
 20 150 8 10  
 21 150 8 22  
 22 150 8 84  
 23 150 8 140  
 24 150 8 20  
 25 150 AM 41  
 26 150 AM 212  
 27 150 8 60  
 28 150 8 17  
 29 150 8 24  
 30 150 8 26  
 31 150 8 21  
 32 150 8 19  
 33 150 8 5  
 34 150 8 91  
 35 150 AM 45  
 36 150 8 6  
 37 150 8 62  
 38 150 8 218  
 39 150 8 3  
 40 150 8 6  
 41 150 8 2  
 42 150 8 15  
 43 150 8 46  
 44 150 8 18  
 45 150 8 2  
 46 150 8 9  
 47 150 8 10  
 48 150 8 6  
 49 150 8 6  
 50 150 8 2  
 51 150 8 7  
 52 150 8 6  
 53 150 8 6  
 54 150 8 6  
 55 150 8 8

Moutens  
 bridge  
 1.000  
 1.000  
 1.000

West  
 Schuler  
 X roads

Moalega  
 & Bentley plm

6. 60  
 6. 60  
 6. 60

2 m 90 p

uwan

7 at 5 day

Descendg