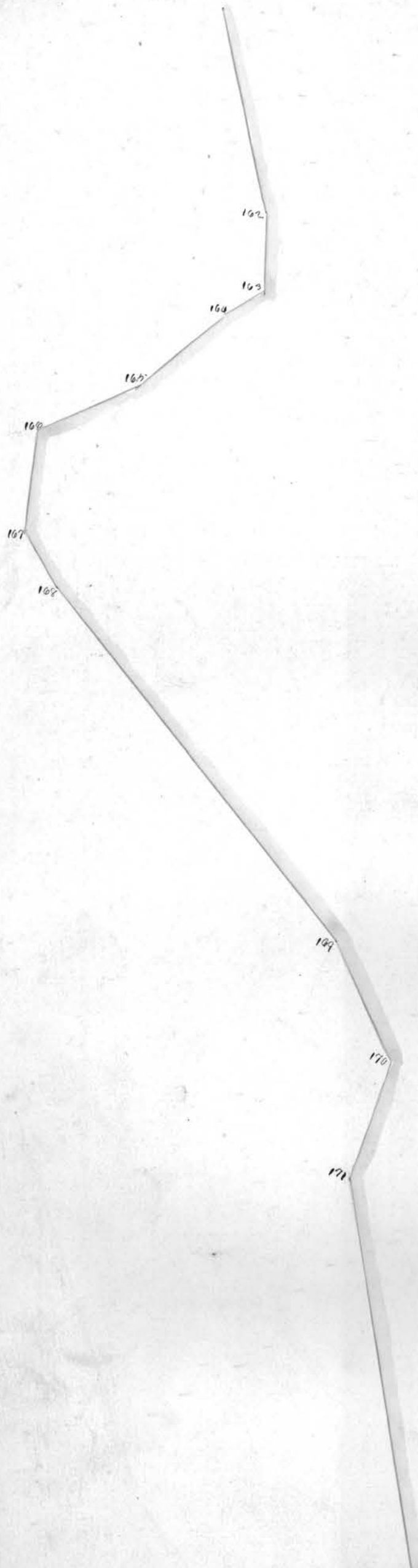


Continued from page 189.



Plot of the road beginning at New-
Castle and running thence to intersect the
State road near James Kinneys as Sur-
veyed by Thomas Lewis Esq. 1840

New Castle



John Williams

Continued on page 191

Bound Out

Continued from page 190

- N 30 1/2 W 41
- N 58 27
- N 72 W 25
- N 19 1/2 W 26
- N 14 1/2 E 16
- N 68 12
- N 64 W 10
- N 10 W 14
- N 24 1/2 E 20
- N 22 W 16
- N 38 W 20
- N 31 W 25
- N 37 1/2 W 40
- N 19 1/2 E 23
- N 89 1/2 E 24
- N 37 E 13
- N 84 1/2 E 38
- N 60 W 33
- N 26 W 16
- N 30 W 28
- N 33 1/2 W 20
- N 44 W 10
- N 29 W 28
- N 31 W 40
- N 37 1/2 W 34
- N 71 W 23
- N 20 1/2 W 68
- N 13 1/4 W 66

Left hand fork of Capline
run

small meadows are
1/2 mile from
Stable at
his mill

2 miles to a
W. Camp

Jesse Ewers

3 miles to a
White oak.

Half road through
Stable

Right hand fork
of Capline
run

- N 36 1/2 E 30
- N 34 1/2 W 8
- N 31 W 33

N 13 1/2 W 06

N 41 E 31

S 89 1/2 E 40

S 78 1/2 E 32

N 15 E 10

S 89 1/2 E 34

N 69 1/2 E 10

S 65 1/2 E 18

S 49 E 16

S 29 E 10

S 46 E 14

S 58 1/2 E 18

S 74 1/2 E 10

N 80 E 30

N 88 E 10

N 42 1/2 E 18

N 53 1/2 E 18

N 42 1/2 E 11

N 24 E 36

N 1 E 10

N 60 E 33

N 40 1/2 E 19

N 68 E 28

N 100 W

4 miles marked on a fence at Thomas E. Coo's house.

5 miles to an Elm

Norman Brown

Rowell

Continued on 193

N 81 W 33

N 8 W 24

N 19 E 33

N 1 E 39

N 48 W 37

N 18 W 36

N 30 1/2 E 17

N 11 E 33

N 27 1/2 W 28

N 63 1/2 W 14

N 63 W 24

N 4 E 19

N 10 W 21 1/2

N 40 W 19

N 28 1/2 E 11

N 19 1/2 W 36

N 97 E 18

N 24 1/2 E 16

N 11 E 10

N 31 E 13

N 13 1/2 E 28

N 74 E 17

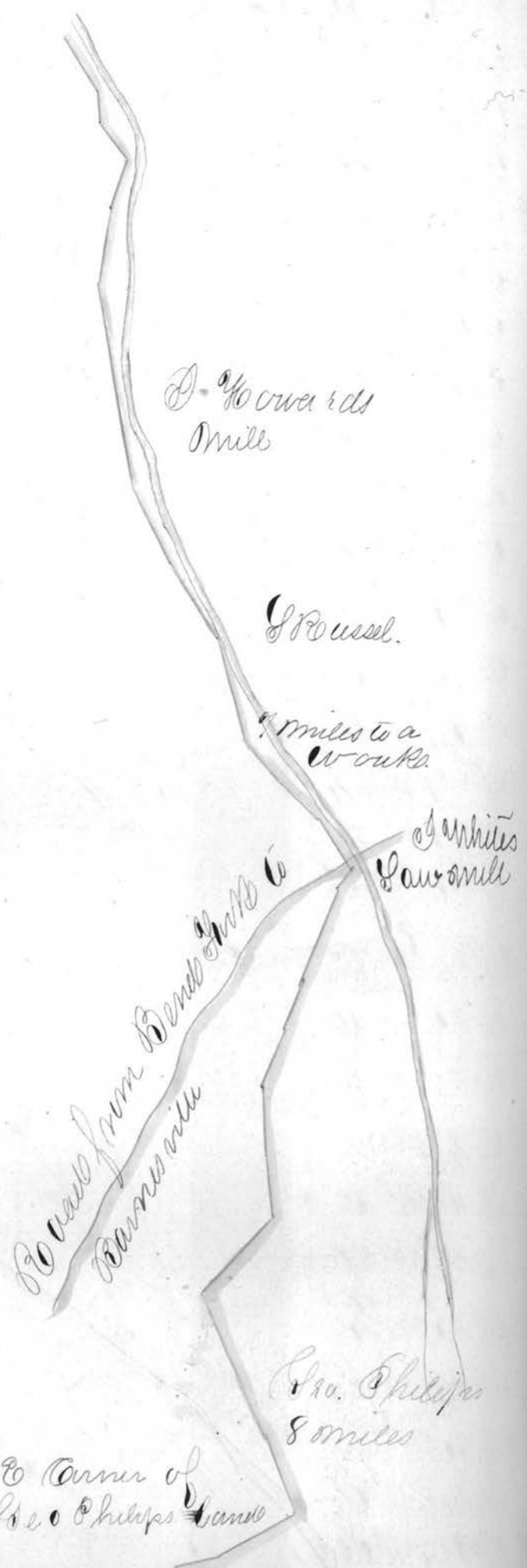
N 10 W 22

N 11 E 10

On N 14 1/2 W 13

Continued from page 191

N 26 W	20
N 30 W	20
N 30 W	20
N 6 W	18.
N 17 W	18.
N 25 E	20
N 16 1/2 E	21
N 10 E	24
N 7 W	23
N 10 W	24
N 5 E	23
N 15 W	23
N 26 W	23
N 15 W	24
N 64 E	19.
N 44 E	28
N 4 1/2 E	23.
N 49 1/2 E	23
N 16 E	28.
N 18 E	24
N 66 E	24
N 1 E	27
N 98 E	24
S 82 E	19
N 69 1/2 E	23
S 89 E	24
S 80 1/2 E	10.
N 83 E	20.
N 69 1/2 E	13.
N 5 1/2 E	21.
N 85 1/2 E	10
S 60 E	18
N 63 1/2 E	19
N 88 E	19
S 69 1/2 E	27
S 76 1/2 E	28.
N 41 E	21



N.E. Corner of
Geo. Philips Land

N 21 E 21
 N 13 1/2 E 27
 N 3 1/2 W 30
 N 10 E 21
 N 18 E 30
 S 80 E 10
 S 70 E 10
 S 87 1/2 E 33
 S 82 E 13
 N 45 E 14
 N 54 E 25
 N 44 E 34
 N 80 1/2 E 23
 N 66 1/2 E 9
 N 78 E 23
 N 30 1/2 E 63
 N 34 1/2 E 33
 N 16 E 38
 N 30 1/2 E 30
 N 1 E 84
 N 30 1/2 W 8
 N 7 W 20
 N 7 E 21
 N 1 E 14
 N 10 W 33
 N 29 E 20
 N 1 E 79 to

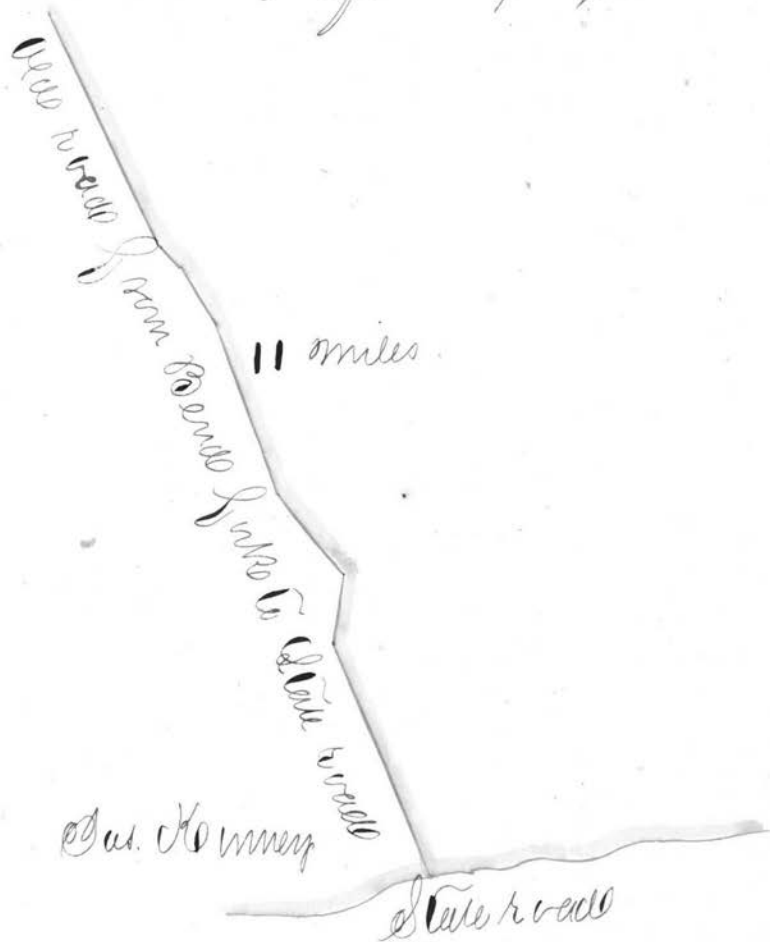
9 miles
 Boundary of
 Davis
 California

10 miles
 Phelps Patent

State roads

Continued on page 193

Continued from page 190



Plat of a ^{alteration on the road from Martins ferry to} road, beginning near Joshua Stills ^{at Pleasant} and ends at Glen run on the old road, as surveyed by James C. Moore A.D., 1840

Olens ~~Run~~ Run.

Sawmill Road.

Sta	Course	Dist
1	S 70 1/2 E	33.7
2	S 85 1/4 E	22.
3	S 77 1/2 E	7.6
4	S 50 1/4 E	37.1
5	S 60 1/4 E	78.7
6	S 43 1/2 E	44.2
7	S 21 E	95.4
1	Same	5.9
2	S 58 1/4 E	35.8
3	S 51 1/2 E	45.7
4	S 62 1/2 E	39.5 ^v
5	S 73 1/2 E	13.5 ^v
6	S 45 1/4 E	35. ^v
7	S 64 1/2 E	39.2
8	S 48 1/2 E	17.2
9	N 73 E	36.5 ^v
10	N 49 E	13.
11	East	8
		278.3

1/2 mile
pole.

Old road

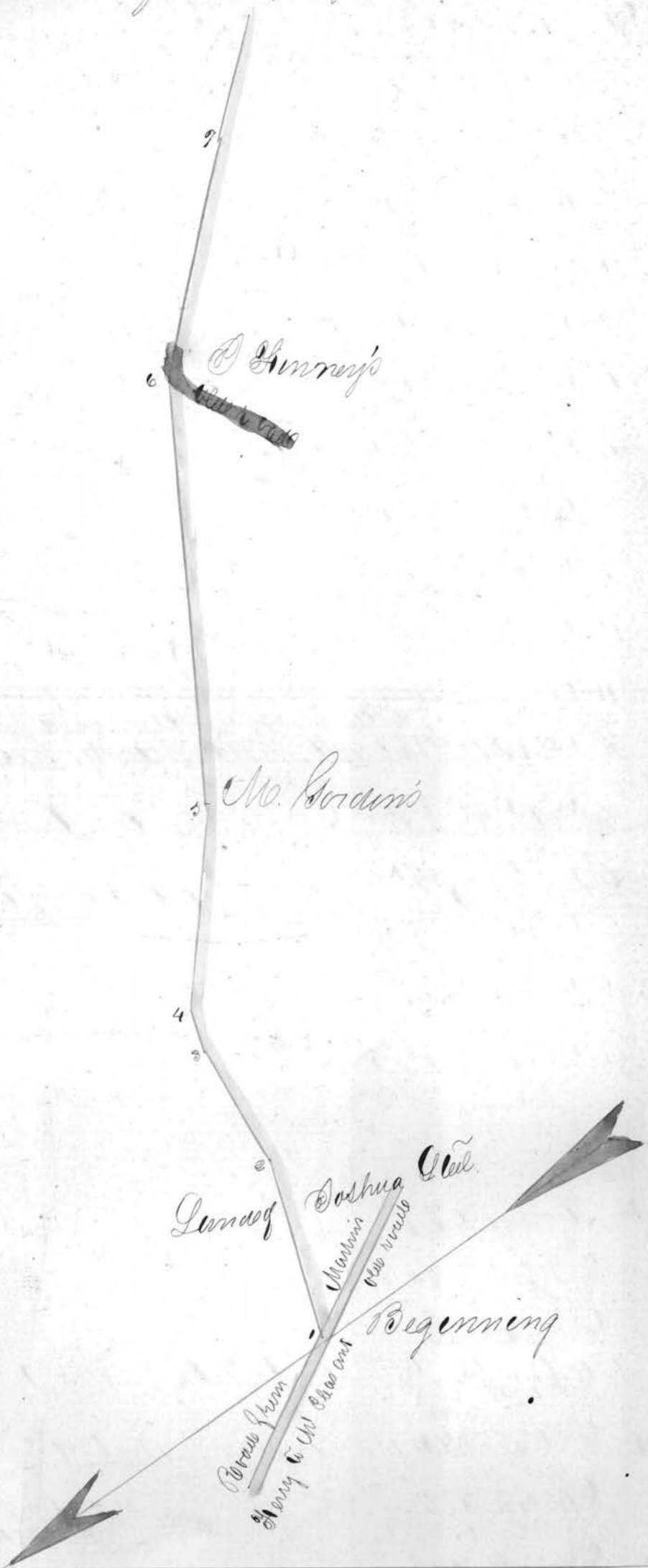
P. B. Blackford

1/2 mile

S. Gordon

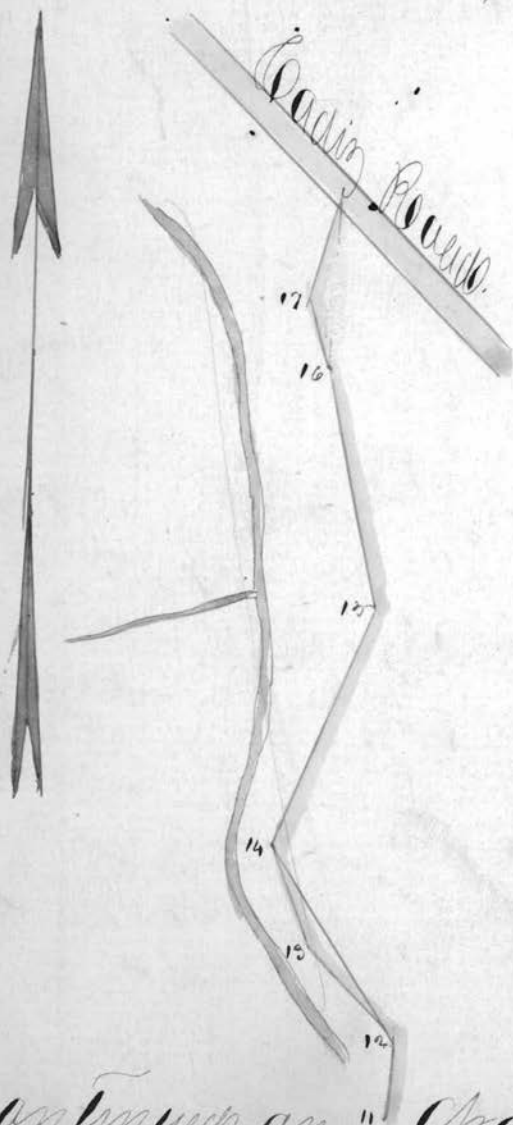
Continued on page 294

Continued from page 193



X

Plot of county roads beginning at a
Stake on the North corners of St Clair
ville and terminating on the lands of
Steve Smith as surveyed by A. C. Moore, 1840

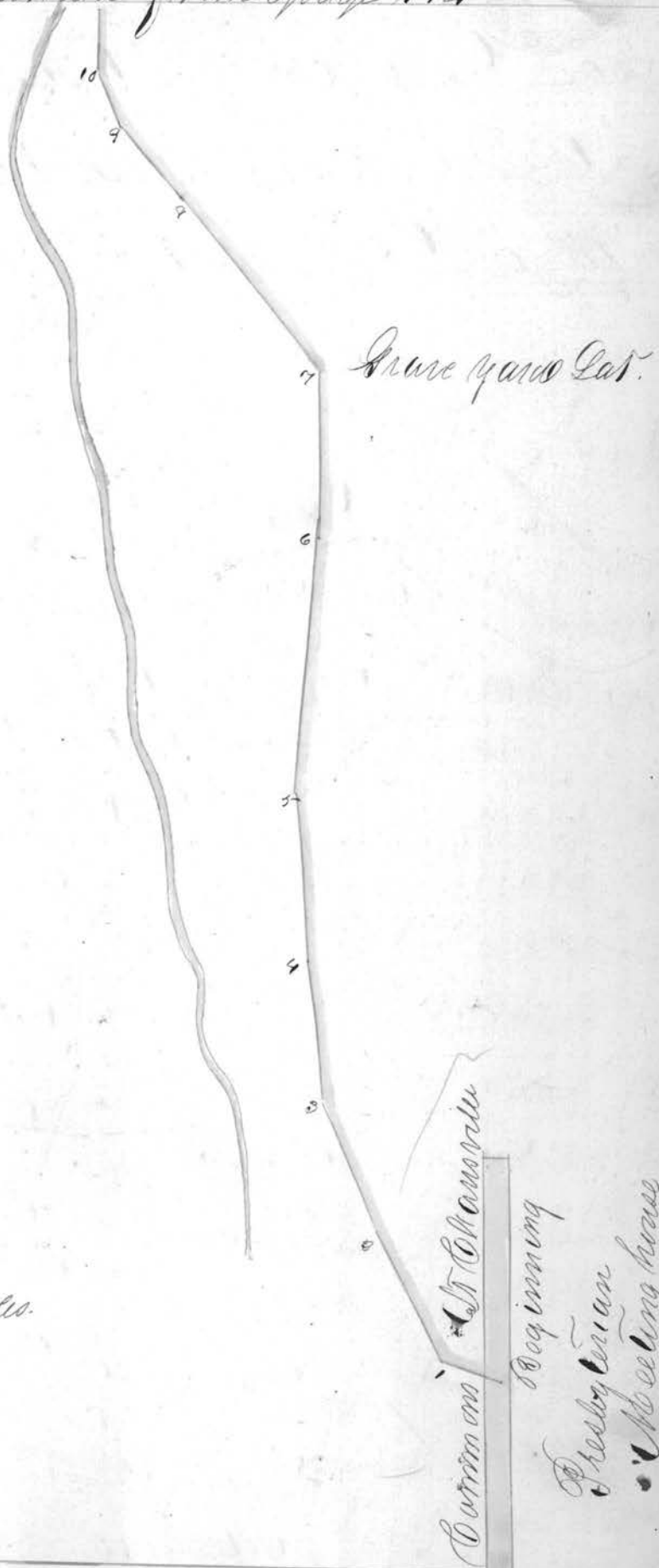


Continued on "Opape 193"

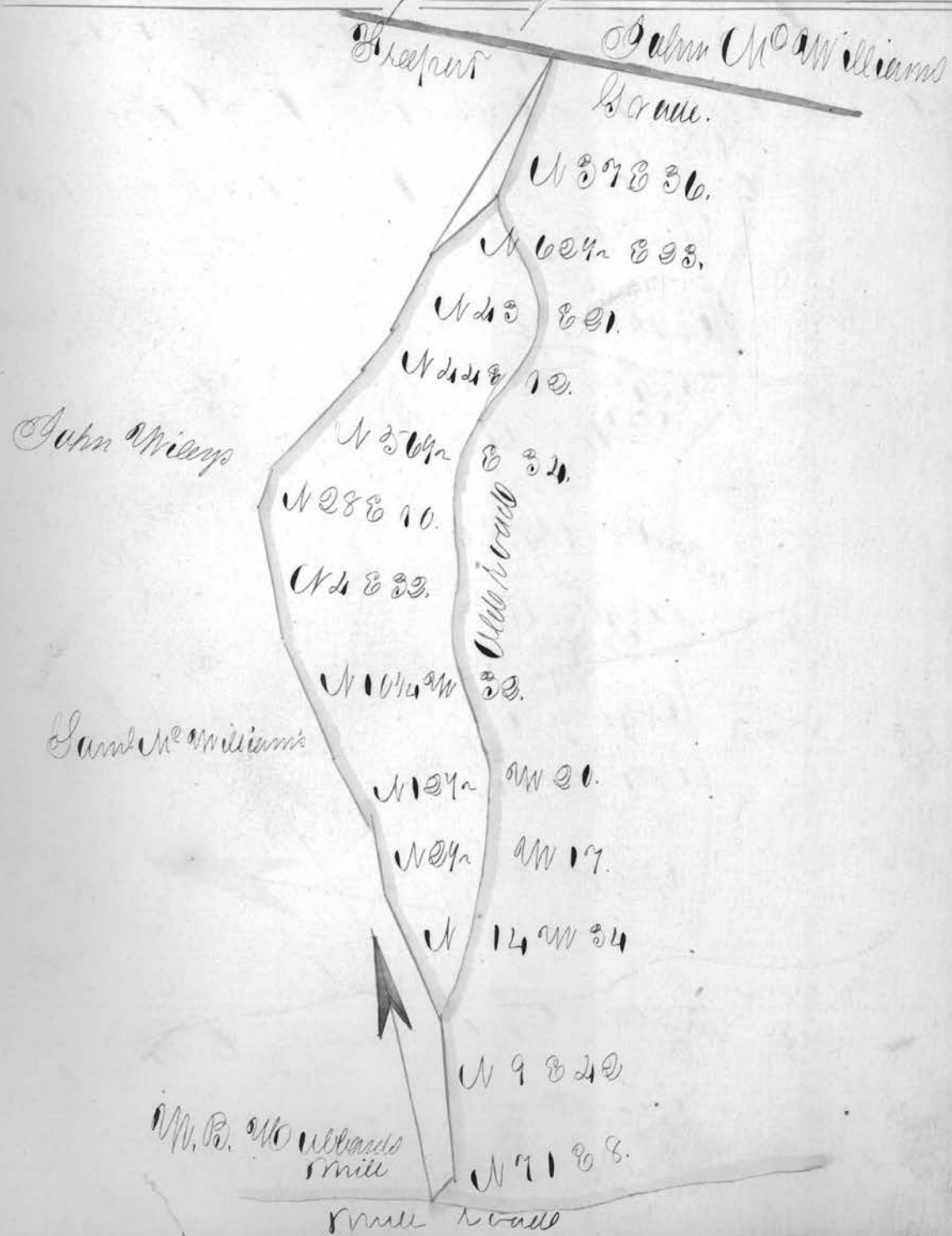
Continued from page 194

Sta	Course	Dist
1	N 69 1/4 W	8.6
2	N 27 1/4 W	18.3
3	N 20 1/4 W	19.1
4	N 7 1/4 W	16.2
5	N 5 1/4 W	21
6	N 4 1/2 E	31.5
7	N 1/2 W	20.34
8	N 40 W	27.4
9	N 43 1/2 W	10.8
10	N 20 1/4 W	7.6
11	N 6 W	9.24
12	N 44 1/4 W	14
13	N 21 1/4 W	11.4
14	N 20 1/4 E	27.16
15	N 14 W	23
16	N 22 1/4 W	7.3
17	N 14 E	10.74

282.28 poles.



Plat of an alteration on the road from
 Mrs B. Mulbards mill to the Sheepcut grade
 beginning at Mrs M^{rs} Williams Lane and
 ends on said Sheepcut grade on Mrs Williams
 Land as Surveyed by Thomas Lewis 1840



190.

That of a road beginning on the road
from St. Clairsville to Centerville and ends
in the road from St. Clairsville past Lewis
Mill as surveyed by Thomas Lewis - 1840.

Road leading from St. Cloudville
to Lewisville
Wilkinson

S 77 1/2 W 20.
3 miles to a white oak
S 51 W 58.

S 88 1/2 W 18.

N 67 W 30.

N 81 1/2 W 28.

Phoda. Bernels.

N 65 W 18.

N 37 1/2 W 20.

N 25 W 14.

N 65 W 19.

N 82 W 25.

N 68 W 10.

Shot. Sheldon's

N 26 1/2 W 23.

N 57 1/2 W 16.

S 64 W 24.

Shot. Wilkinson's

5 miles
run.

West 18.

S 60 W 15.

S 83 W 15.

N 85 W 27.

S 89 W 14.

George Bowles

N 57 W 22.

S 85 W 10.

N 70 W 10.

run.

S 84 W 18.

S 37 1/2 W 19.

N 89 W 34.

run.

N 40 W 14 1/2.

S 59 W 8 1/2.

N 70 W 20.

N 78 W 14.

N 89 W 38.



Road from St. Cloudville to Center-

Plan of a road beginning at Barnsville
and running thence to intersect the main
State road as surveyed by Jas. Ware 1840



The Course Dist

1 N 64 E 44

2 N 55 E 35

3 N 63 E 16

4 N 65 E 33.10

5 N 77 1/2 E 19

6 N 67 1/2 E 15

7 N 75 E 31.7

8 N 63 1/2 E 38

9 N 43 1/2 E 30.3

10 N 28 E 36

11 N 28 E 35

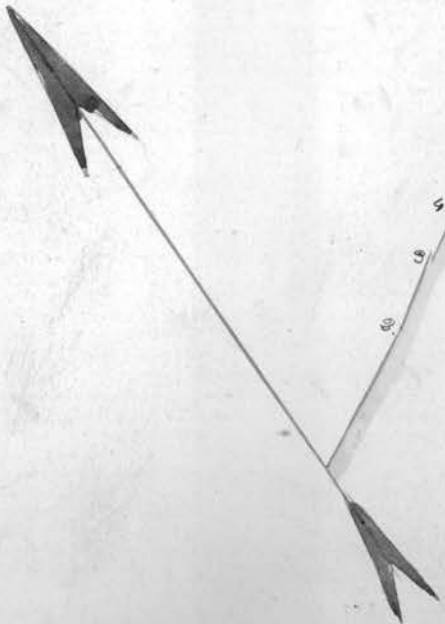
12 N 33 E 36

13 N 45 E 11.8

25
24
23
22
21
20
19
18
17
16
15
14
13
12
11
10
9
8
7
6
5
4
3
2
1

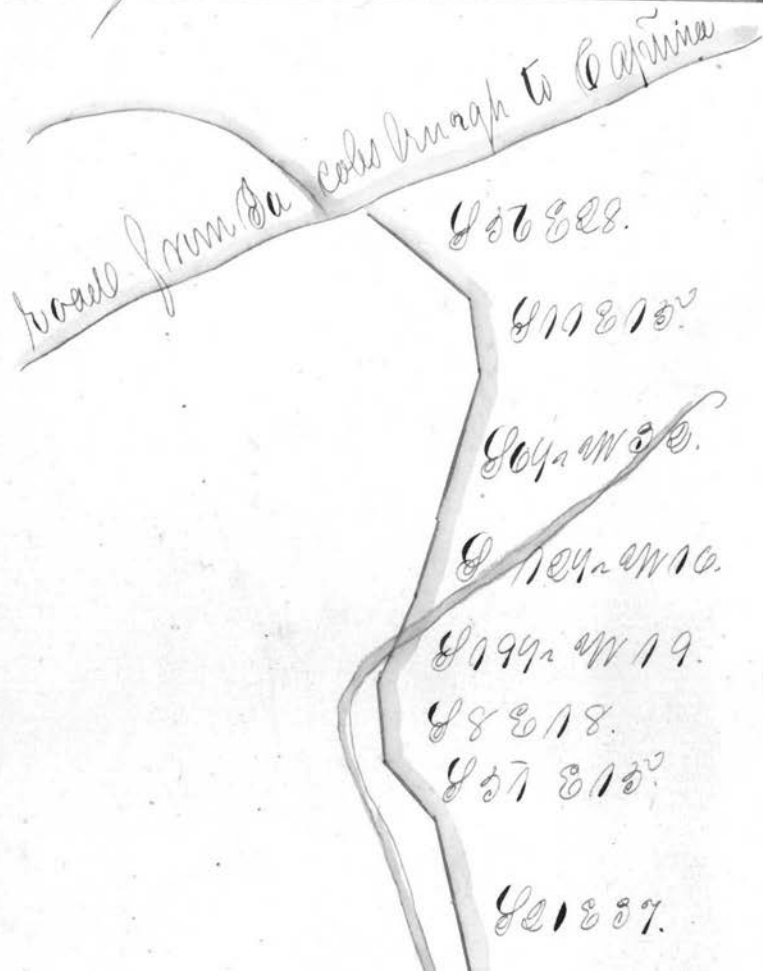
Eli Moody
his

Mr. Maguire



- 11 U 288 22.
- 12 U 298 26.
- 13 U 458 11.8
- 14 U 558 12.
- 15 U 468 40
- 16 U 168 31
- 17 U 318 48.
- 18 U 108 24
- 19 U 328 50.
- 20 U 108 30.
- 21 U 308 45.
- 22 U 38 18.
- 23 U 244 14
- 24 U 358 10
- 25 U 374.8 19
- 26 U 284.8 28.
- 27 U 234 W 19, 13
- 28 U 7 W 18.
- 29 U 188 16.
- 30 U 208 35
- 31 U 368 48.
- 32 U 488 22.
- 33 U 134.8 12.8

That of a road beginning on the State
road from the Ohio river opposite the flats
of Grave creek to Zanesville, and ends
in the road from Jacobsburg to Caprina
as surveyed by Thomas Lewis A.D. 1840



821837.

812807.

A. melleo to a *Solum*
tree

842826.

816828.

878339.

874426.

81042800.

821838.

To valley of the

8234260.

8342811.

815820.

8842809.

81742817.

8342817.

83742844.

8138201

A. melleo to a
Sycamore tree

84942813

83142812

84142815

82342820.

86089

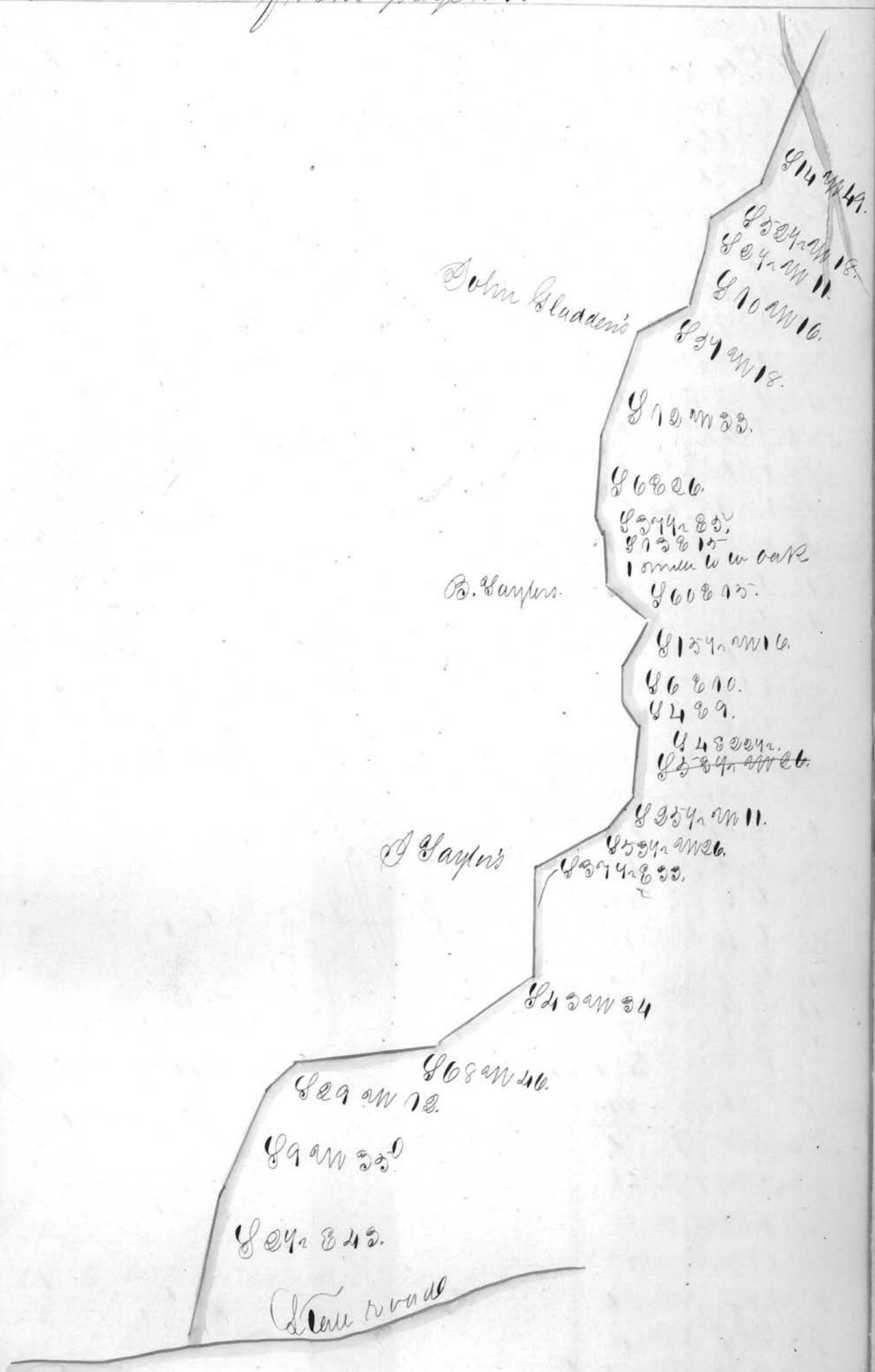
85812.

820817

840428
22.

Continued on page 179.

Continued from page 198



Plan of a State Road from opposite
 the Mouth of Grave Creek to running
 thence to the town of Pleasanton as
Surveyed by A. D. 1840

Continued from page 173.

Ohio River

Sta Course Dist

1 N 179° E 24

2 S 23° E 42

3 S 29° E 40

4 S 30° E 36

5 S 39 1/2° E 30

6 S 39° E 64

7 S 40 1/2° E 30

8 S 39° E 30

9 Same 60

10 S 30 1/2° E 59

11 S 28 1/2° E 57

12 S 11 1/2° W 103

13 S 9° W 50

6 S 2 1/2° W 6 com

7 Same 23

8 S 12° W 20

9 S 23 1/2° W 18

10 S 24 1/2° W 38

11 S 34° W 10

12 S 36° W 12

13 S 34° W 28

14 S 26° W 26

15 S 43 1/2° W 64

16 S 89° W 12 an 200

5 miles

Continued