



Sta	Course	Dist
1	S 61 E	74 1/2
2	S 54 1/2 W	23.
3	S 84 1/2 E	6.
4	S 18 E	6.
5	S 34 E	6
6	S 64 1/2 E	10.
7	S 71 E	10.
8	S 78 1/2 E	9
9	S 73 1/2 E	3.
10	S 49 E	10.
11	S 14 E	31.
12	S 19 1/2 E	7
13	S 31 1/2 E	24
14	S 47 E	10.
15	S 60 1/2 E	33 1/2
16	S 40 1/2 E	18
17	S 85 E	111.
18	S 77 E	33.
19	S 70 1/2 E	34
20	S 68 E	36.
21	S 30 E	33.
22	N 89 E	10.
23	N 83 E	36.
24	S 57 E	11.
25	S 33 E	18.
26	S 49 E	13-
27	S 4 E	31.
28	S 24 E	31.
29	S 42 E	20
30	S 81 E	33.
31	S 67 E	19
32	S 36 E	23.
33	S 73 1/2 E	13.
34	S 70 1/2 E	30.
35	N 83 1/2 E	23.
36	N 88 E	17.
37	S 72 E	8.
38	N 71 1/2 E	33
39	N 83 1/2 E	18

An wood field

Road.

18  
1 mile

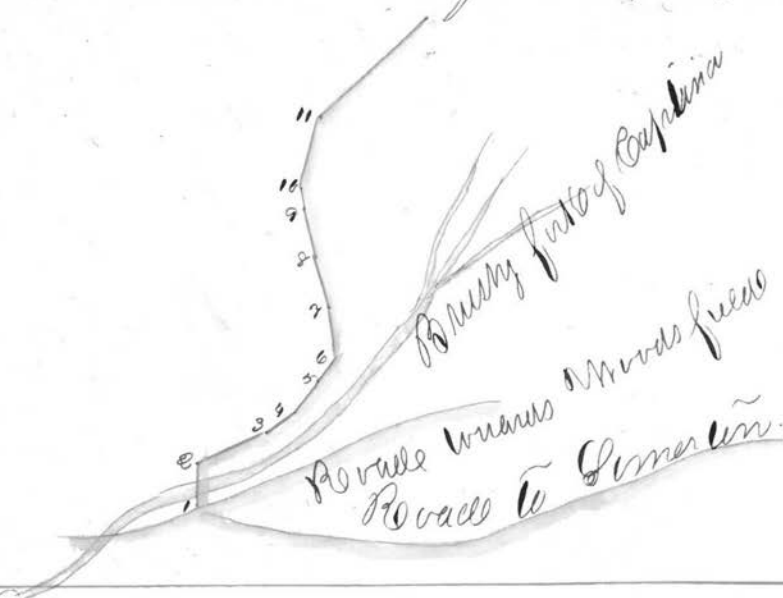
17  
16  
15  
14

Gas Islands

Continued at <sup>19</sup> 12 page 181.

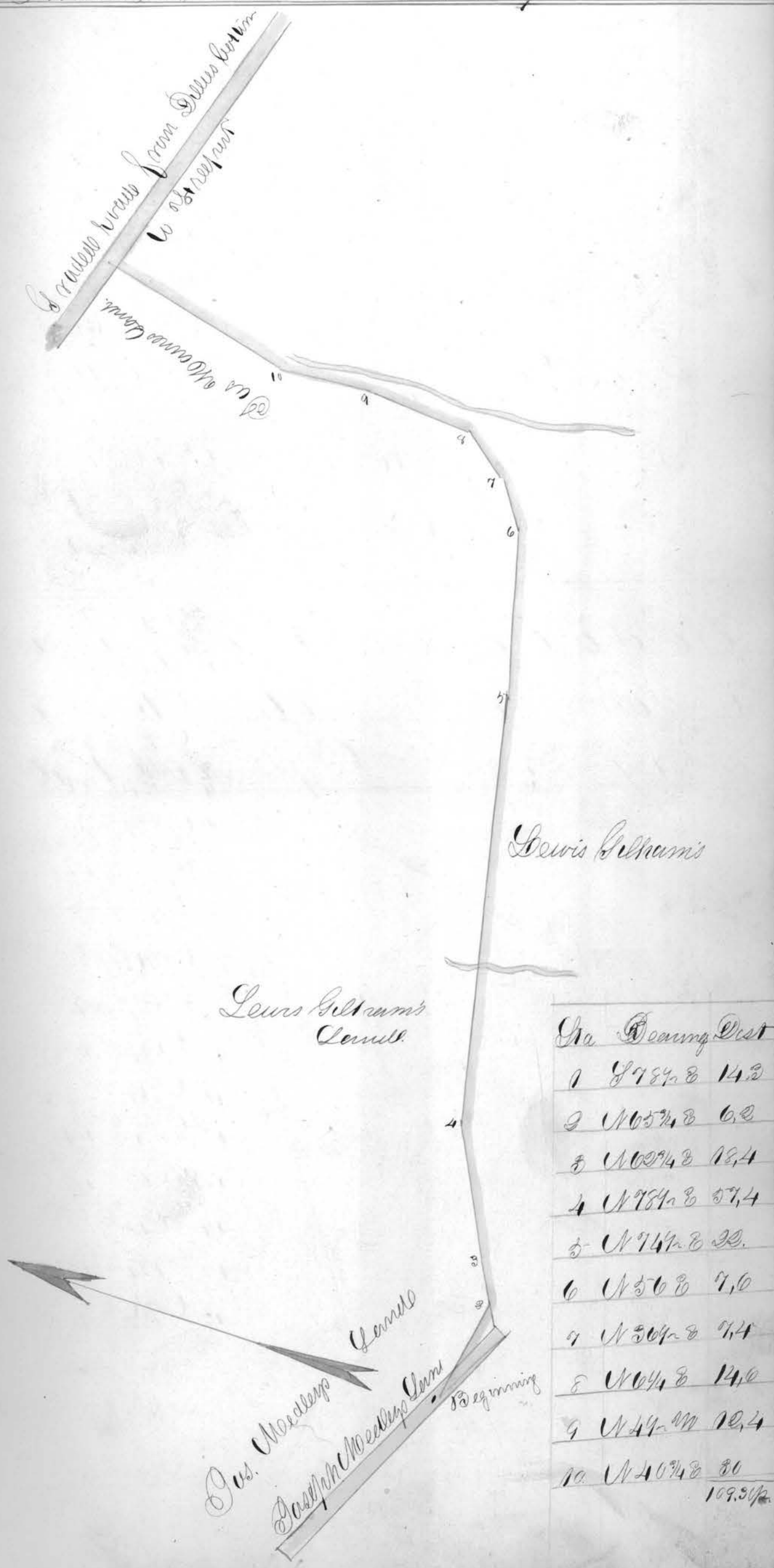
- 40 868 88.
- 41 850 88.
- 42 848 14
- 43 808 10.
- 44 804 8.
- 45 899 17.
- 46. 84 9. 9. 9.

Continued from page 180



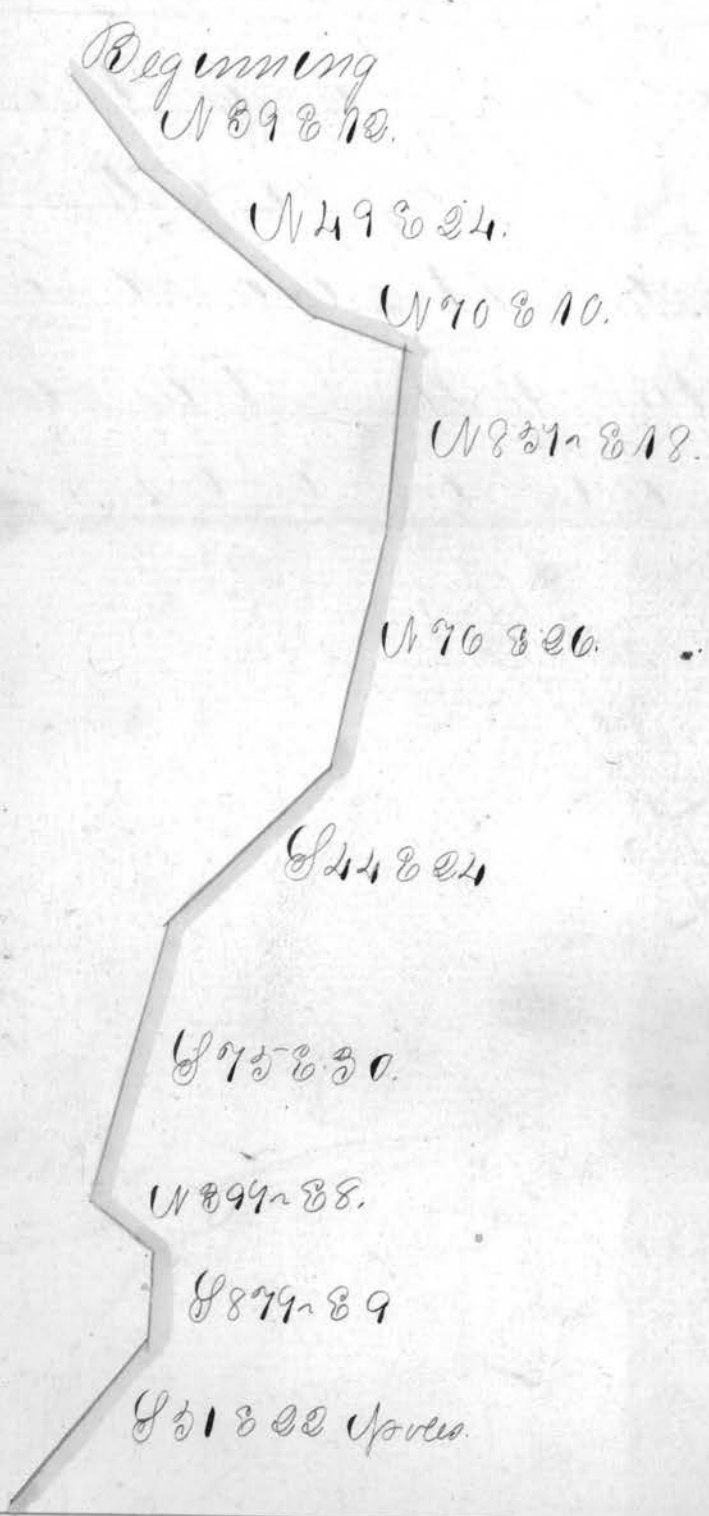
That of a road beginning beginning near

That of a road beginning beginning near  
 the S.E. end of Joseph Woodley's Dam running  
 thence to intersect the graded road from  
 Dill's bottom to Street as surveyed by  
 James C. Moore A.C. 1839



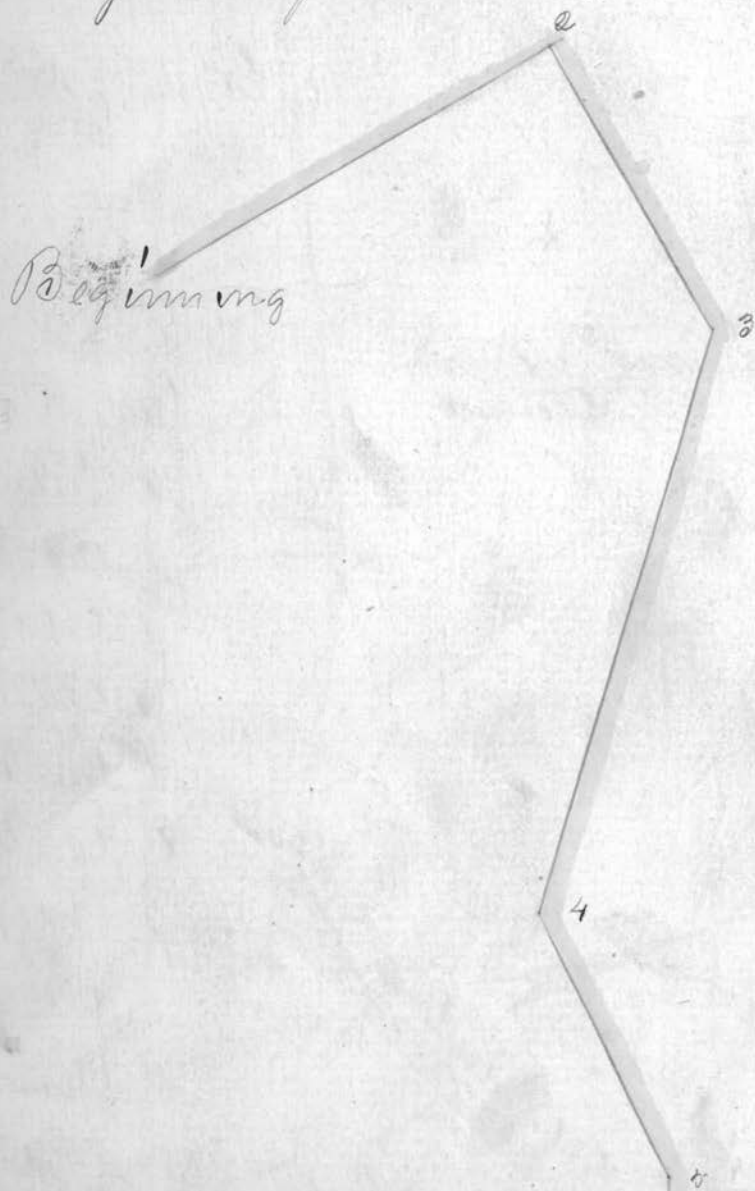
182.

Plat of an alteration on the State road  
 passing over Catskill in York Co. com-  
 mencing at a rock near the three mile tree  
 on N.D. Jackson's Land and intersecting  
 the County road at Captina Creek as Survey-  
 ed by William Shepherd Esq. 1839





Plot of a graded county road beginning  
at Jacobstown running thence to Belair  
as surveyed by Wm. Shepherd A.D. 1840



Continued on Page 6 183.

43

44

45

46

40

48

49

49

50

51

52

53

70	S 49 E	0.
71	S 61 E	14
72	S 26 E	10.13
73	S 47 E	26.
74	S 61 E	28.11
75	N 38 E	39.
76	N 71 E	36.
77	N 11 E	16
78	N 21 E	3.15
79	N 17 E	7
80	N 39 E	7
81	N 52 E	12.
82	N 46 1/2 E	21
83	N 02 E	38.
84	S 67 1/2 E	21 3/4
85	S 80 E	33
86	S 81 1/2 E	14
87	S 68 E	8.18
88	S 81 E	10.
89	N 87 E	20
90	N 39 1/2 E	26.
91	N 79 1/2 E	13
92	N 53 1/2 E	22
93	N 55 1/2 E	17.9
94	N 40 E	26
95	N 35 1/2 E	29.7
96	N 50 E	32
97	N 67 E	10
98	N 54 1/2 E	28
99	N 61 E	21

Continued on 18<sup>th</sup> 24

Concurrence from page 182.

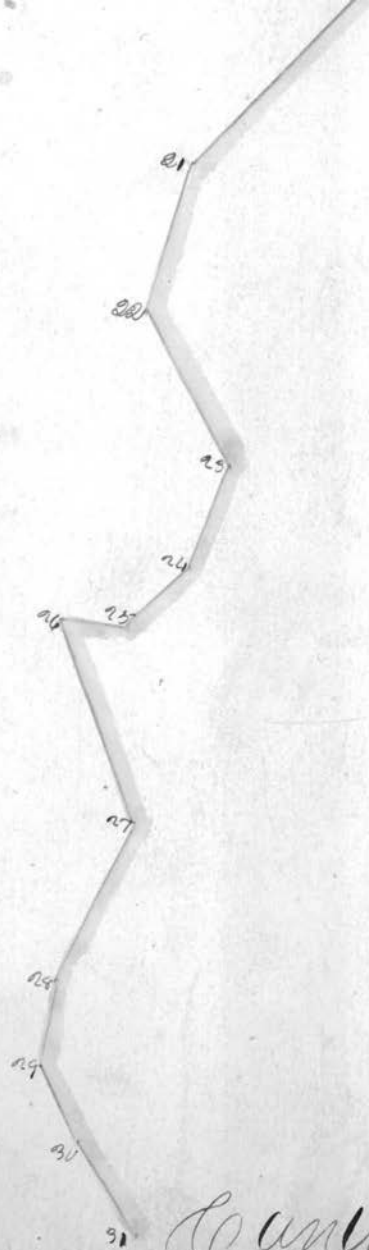
Sta Course Dist

- 1 N 78° W 48.4 poles.
- 2 North 24
- 3 N 46° 28' 68.
- 4 N 48 31.
- 5 N 29° 28' 10.
- 6 N 36° 35.8
- 7 N 47° 28' 19.8'
- 8 N 40° 28' 34.
- 9 N 90° 28' 40.10
- 10 N 85° 28' 24.13.
- 11 N 62° 28' 20.7
- 12 N 70° 28' 8.8
- 13 N 77° 28' 4.4
- 14 N 95° 28' 20.
- 15 N 47° 28' 21.10
- 16 N 80° 28' 6.13
- 17 N 68° 28' 14.13
- 18 N 85° 28' 13.13
- 19 N 90° 28' 8
- 20 S 68° 28' 38.6
- 21 N 83° 28' 12.10
- 22 N 38° 28' 18.
- 23 N 89° 28' 10.
- 24 S 68° 28' 8.
- 25 S 20° 28' 7.
- 26 N 46° 28' 22.13
- 27 S 83° 28' 7.13
- 28 S 89° 28' 10.9
- 29 N 77° 28' 9.14



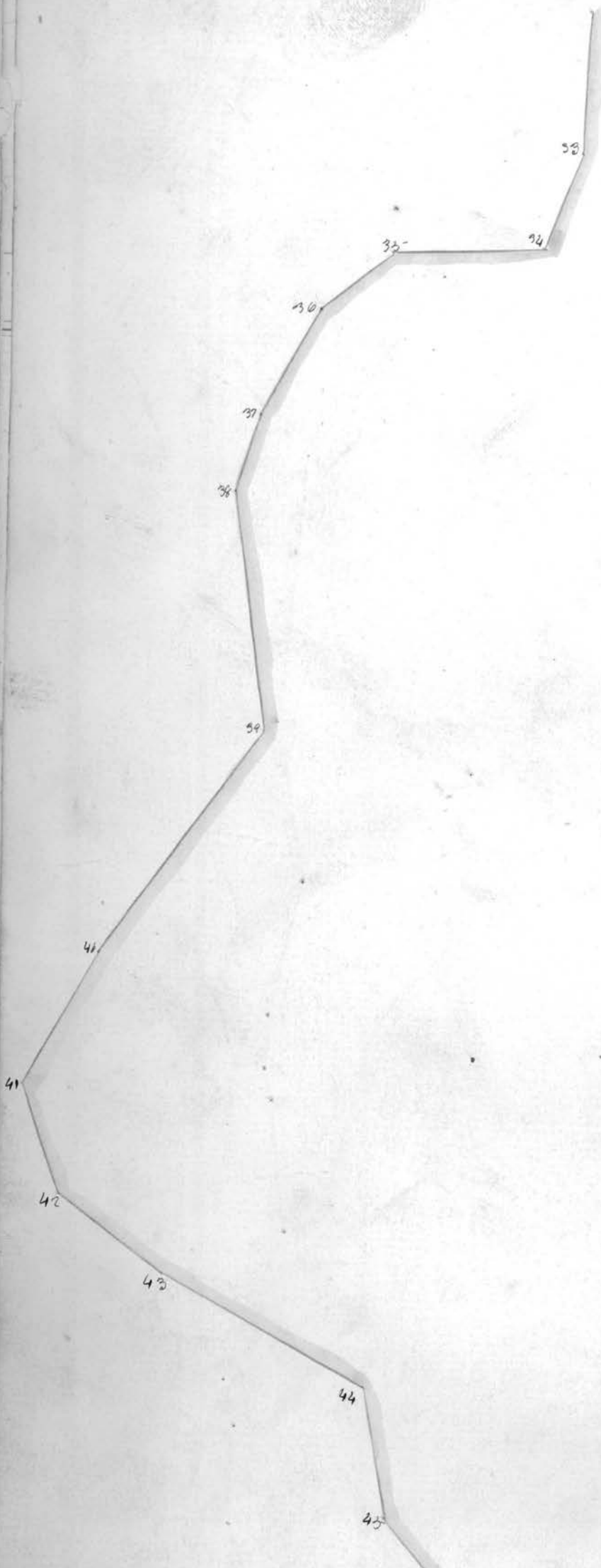


30 N 49 1/2 E 9.0  
 31 N 35 E 12.6  
 32 N 60 E 21.0  
 33 N 78 E 15.6  
 34 S 35 E 28.  
 35 S 70 E 18.  
 36 N 56 1/2 E 18.  
 37 N 73 E 10.5  
 38 N 50 E 30  
 39 N 84 1/2 E 40.  
 40 N 75 1/2 E 22.20  
 41 N 24 E 18.10  
 42 N 10 W 18.23  
 43 N 17 W 22.15



Continued on 184

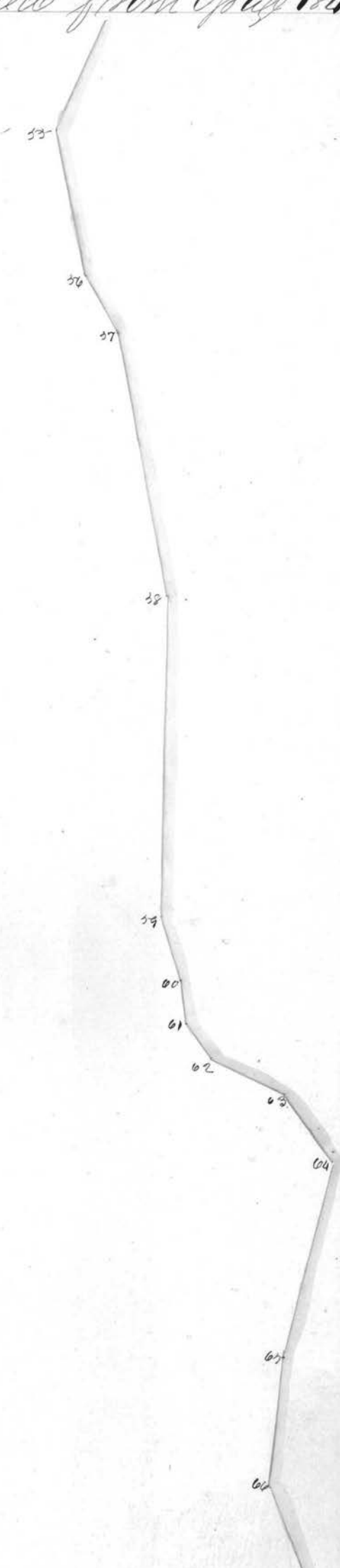
Continued from page 183.



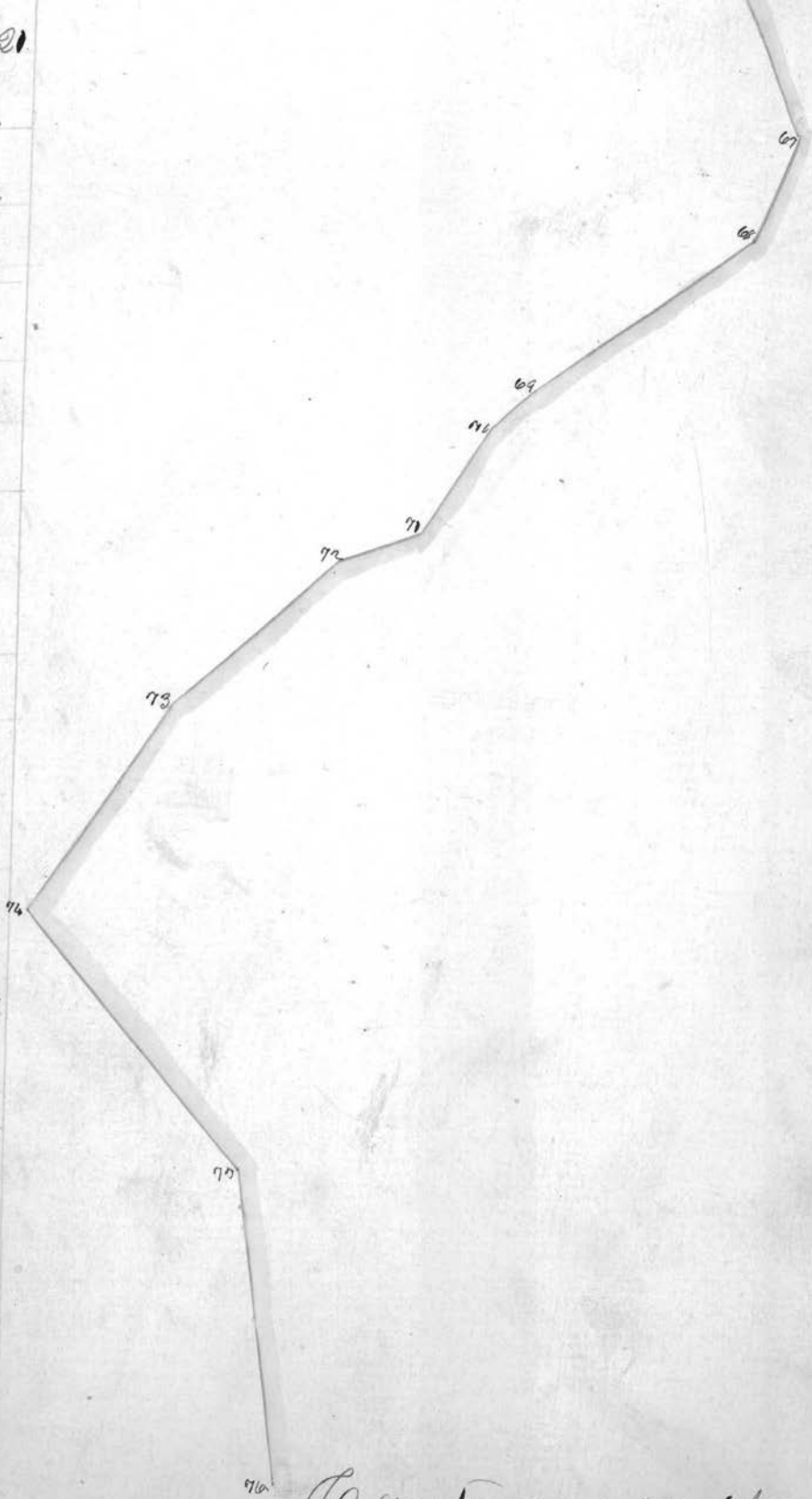
44	N 56 E	19,12
45	N 29 1/2 E	34,11
46	N 29 1/2 E	41.
47	N 71 E	11,6
48	N 65 E	7.
49	S 89 E	15.
50	N 53 E	19
51	N 179 1/2 E	12.
52	N 40 E	39.
53	S 64 1/2 E	39,8
54	N 87 E	17,4
55	N 50 E	30,17.
56	N 34 E	34,10
57	N 53 E	40.
58	N 63 E	28
59	N 47 E	10.
60	N 25 E	14,10
61	N 69 E	5,12
62	N 43 E	33,0
63	N 149 1/2 E	12.
64	N 419 1/2 E	13,18
65	S 80 1/2 E	30.
66	N 86 E	13.
67	N 58 E	23.
68	S 75 1/2 E	14.
69	S 44 E	30,17
70	S 49 E	6.
71	S 61 E	14
72	S 26 E	10,13
73	S 47 E	26.
74	S 61 E	23,11
75	N 38 E	39.

*Continued from page 184*

100	N 34 E	26
1	N 89 E	28
2	N 32 E	18
3	N 30 E	49
4	N 80 E	19, 18
5	N 14 W	11, 11
6	N 13 E	11
7	N 20 E	23, 19
8	N 30 E	18, 13
9	N 70 E	38, 13
10	N 80 E	33
11	N 32 E	31, 4
12	East	46, 12
13	N 33 E	22
14	N 80 E	24
15	N 77 E	18
16	N 63 E	22
17	N 40 E	17, 13
18	N 37 E	7
19	N 72 E	22
20	N 80 E	10, 13
21	N 32 E	26, 12
22	N 74 E	20
23	N 65 E	21
24	N 10 E	24
25	N 70 E	10
26	N 6 W	7
27	N 32 E	13, 21

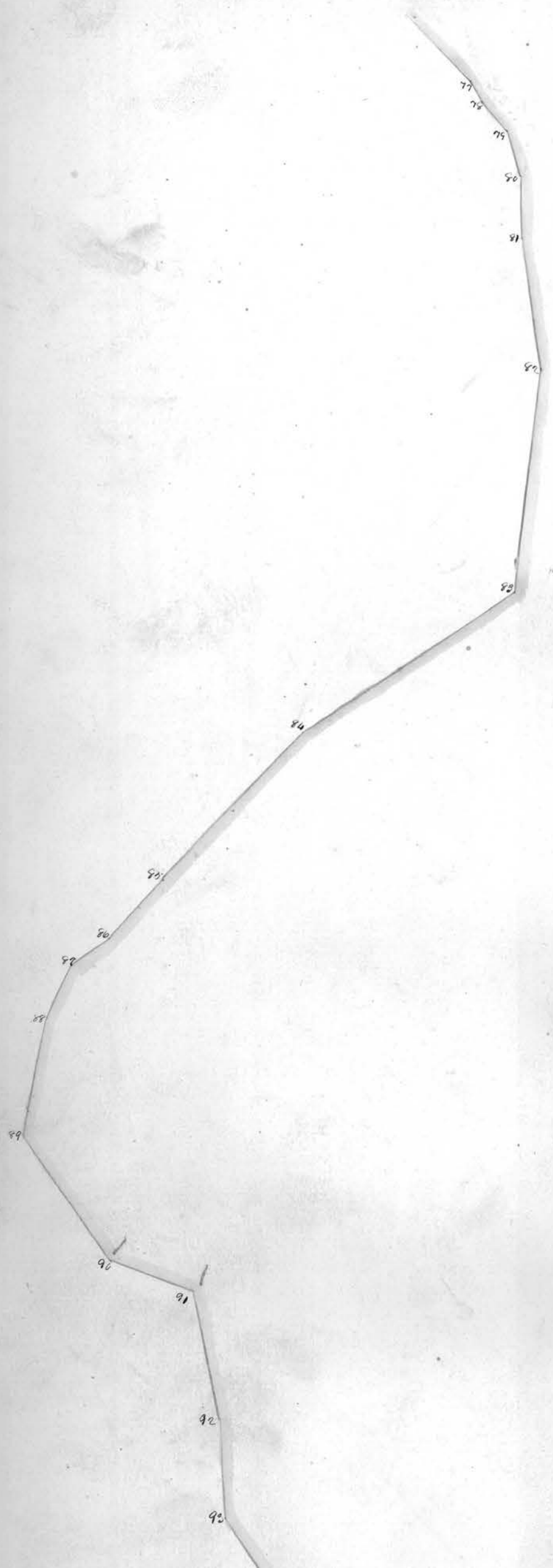


- 27 U 3012 13.21
- 28 U 838 18.
- 29 U 7742 20
- 30 U 488 17.
- 31 U 538 5
- 32 U 858 14
- 33 U 808 12
- 34 U 778 6,10
- 35 U 6042 4.
- 36 U 6192 10.
- 37 U 718 9.
- 38 U 618 7
- 39 U 828 20.
- 40 U 888 24,10
- 41 U 838 10,1
- 42 U 398 30
- 43 U 3642 28
- 44 U 278 18
- 45 U 1792 20.5.
- 46 U 218 10.
- 47 U 000 14



Go on to use on page 180.

*Continued from 185*





92

93

94

95

96

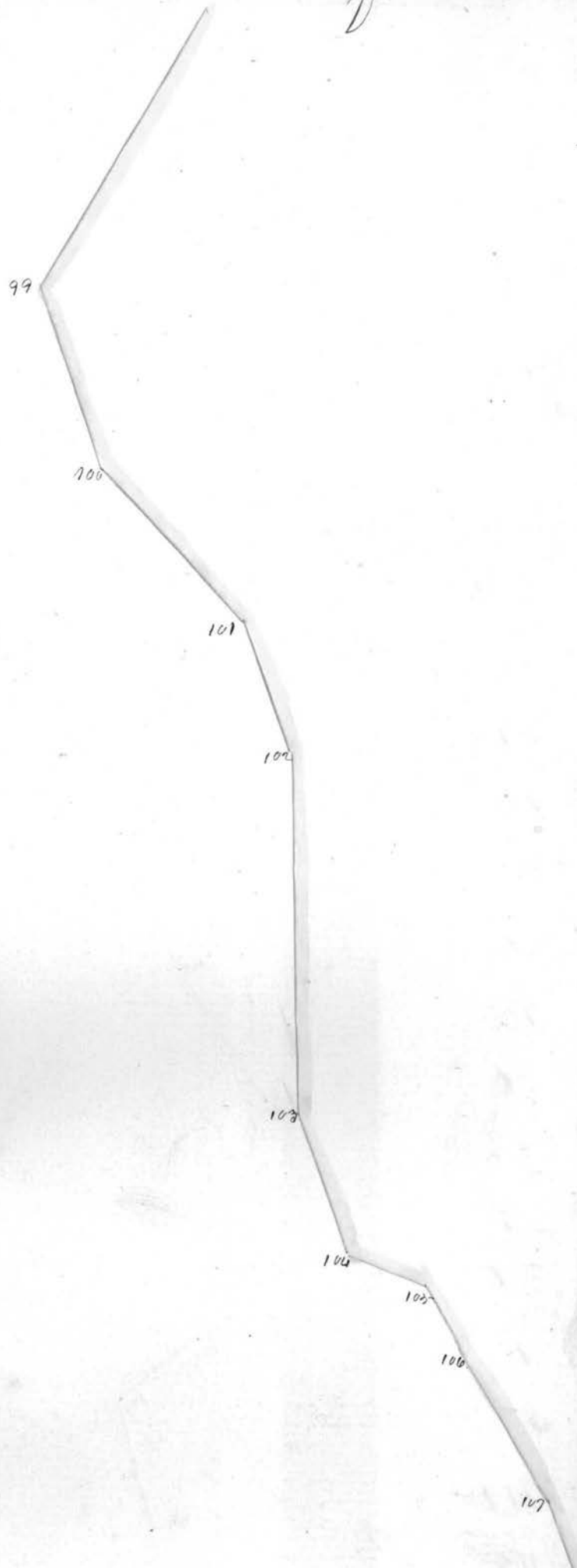
97

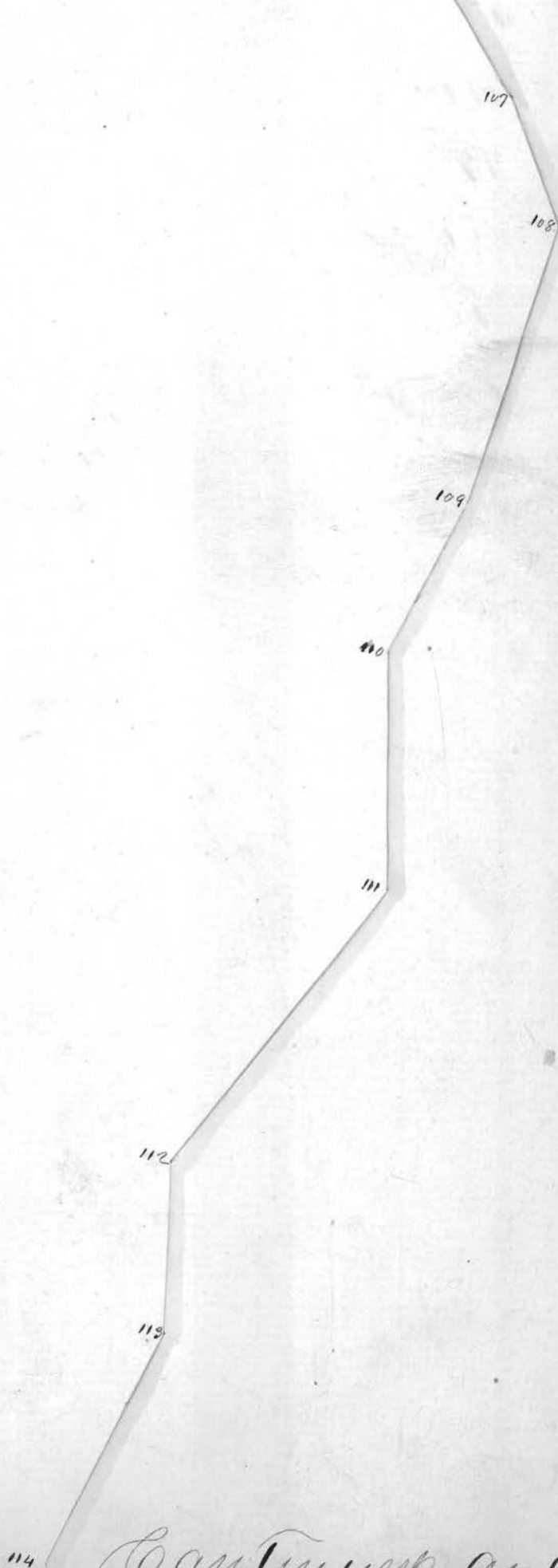
Mount Zion  
Meeting house

Continued on p 98 1897.

Continued from 186.

186



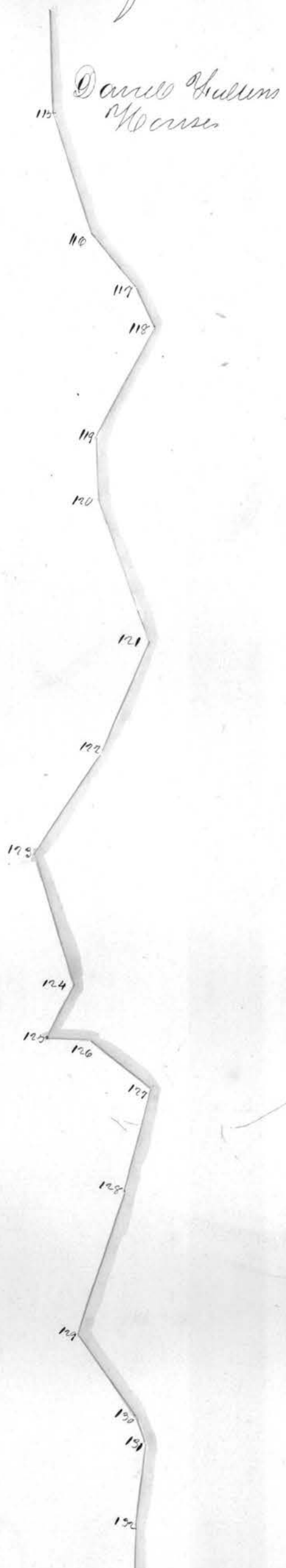


Continued on p 188

Continued from 187.

48	N 41 W	18
49	N 12 1/2 W	10.
50	N 8 W	11.
51	N 3 W	21.
52	N 15 E	17.
53	N 13 1/2 E	20.
54	N 23 E	17.
55	S 86 E	10.19
56	S 29 E	10.
57	S 31 1/2 E	24
58	S 89 1/2 E	10.
59	S 80 E	13.
60	S 74 E	30.
61	S 52 E	16.
62	S 88 E	30.
63	S 72 E	13.
64	S 15 1/2 E	7.
65	S 26 E	20.
66	S 89 E	18.
67	S 71 1/2 E	18.
68	N 77 1/2 E	11.12
69	N 65 1/2 E	17.
70	N 78 E	22.6
71	S 36 E	21.5
172	S 85 E	68.

To Bell air  
Being 11 miles of  
30 poles.

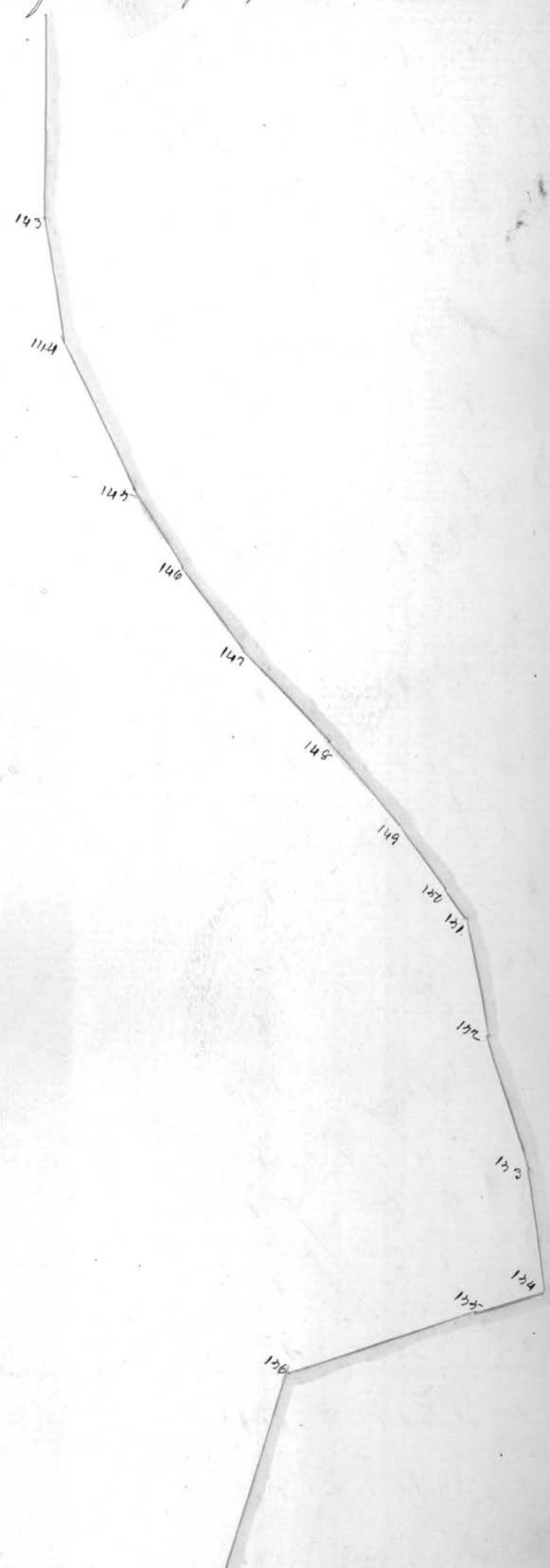




San Francisco 142 on page 189.



C continued from page 188



101  
100  
109  
101  
101

Continued on <sup>100</sup> page 190.