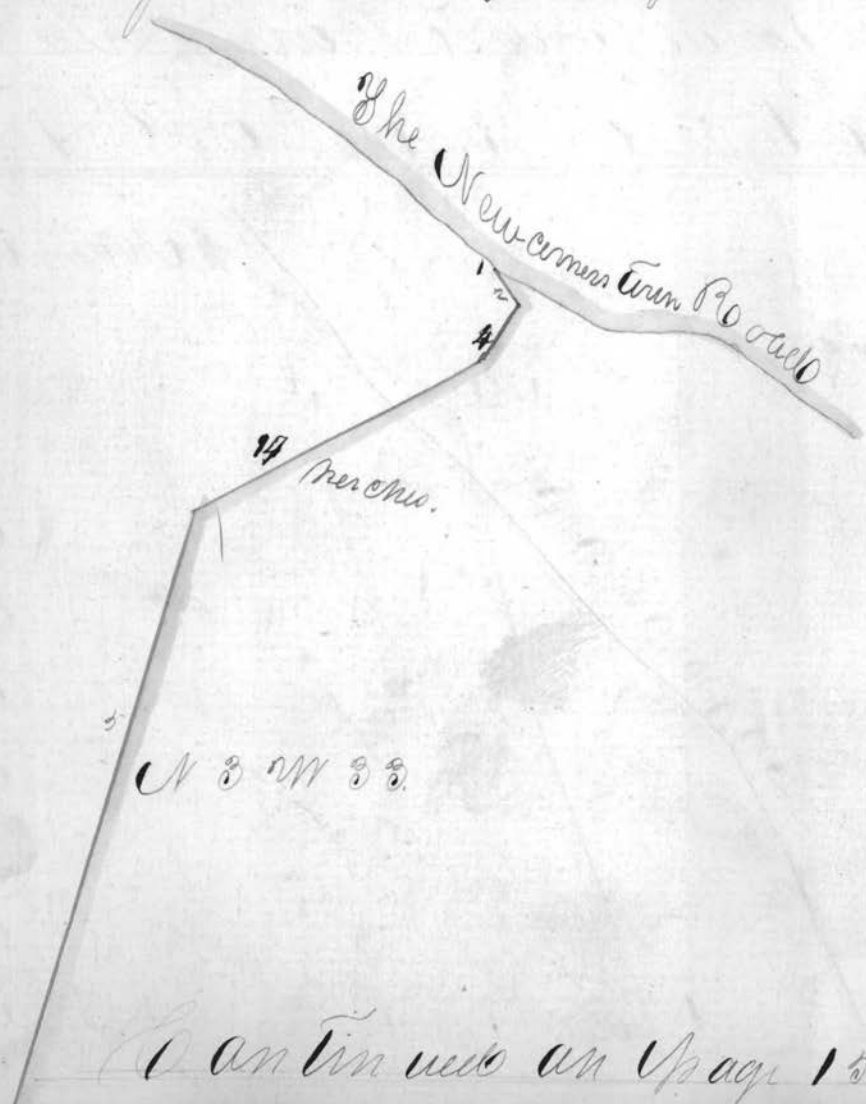


Continued from page 149

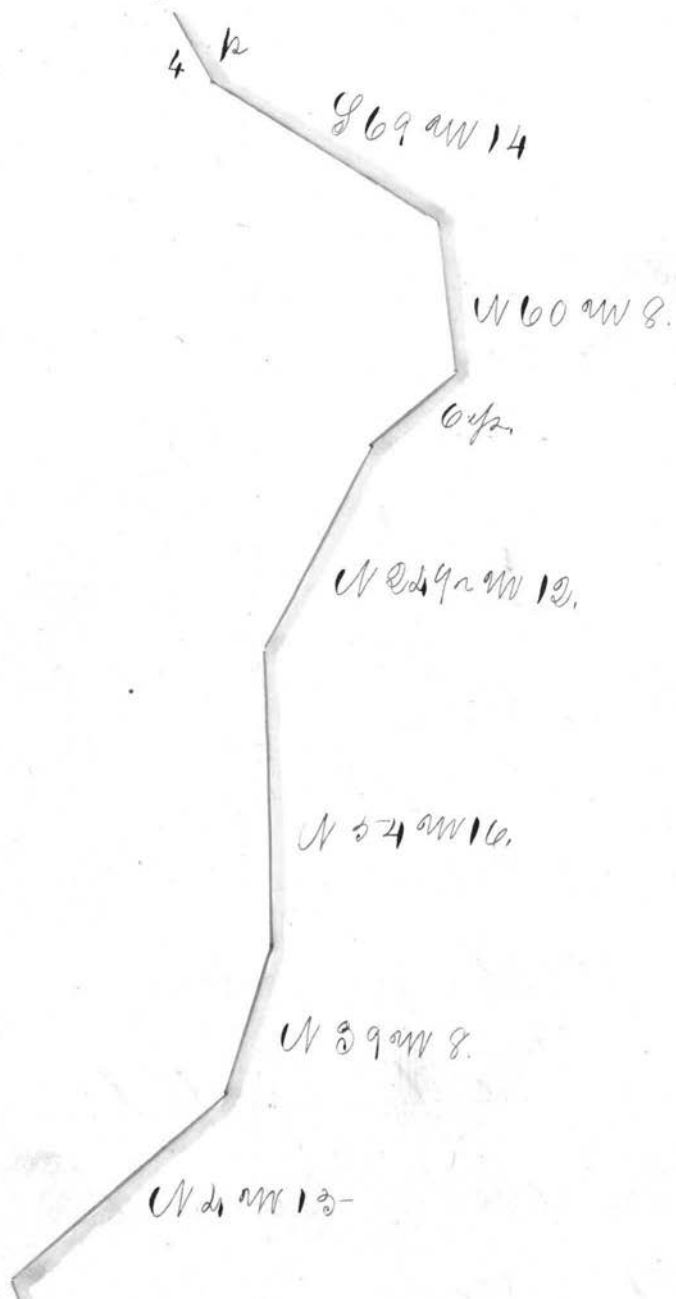


Road from the National
Hotel to Barnstable

That of a road beginning on the Land
of Robert Hunter on the New Corner Town
road, running thence to the line between Bel-
mont & Guernsey Co. as surveyed by Chas. Briggs 1838



Continued from page 150



W 95 1/2 NW 23

W 69 1/2 NW 23

W 21 1/2 NW 13

W 31 1/2 NW 18

W 21 1/2 NW 8

W 10 1/2 NW 18

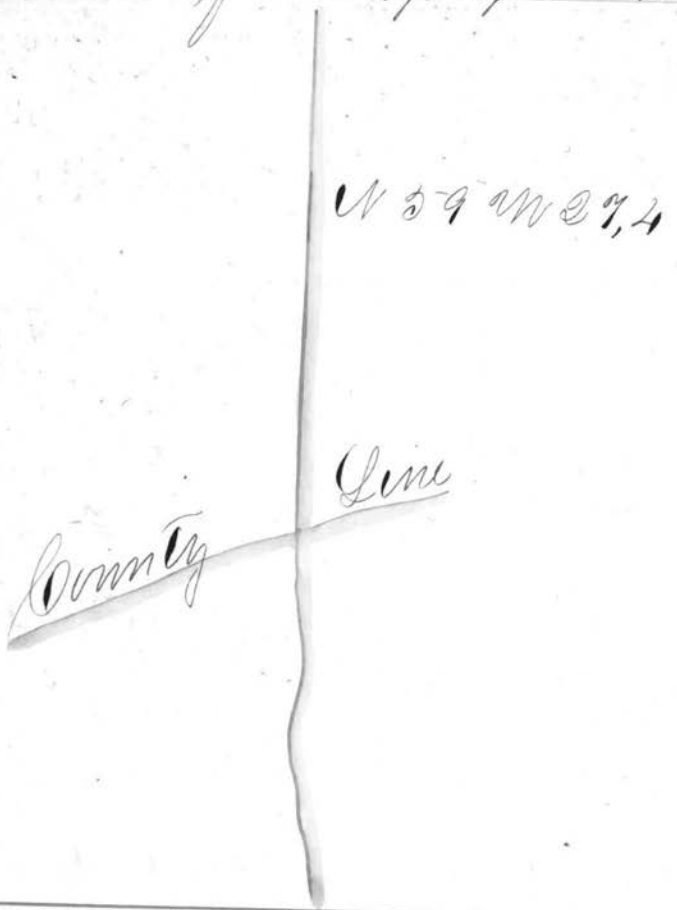
SW 1/4 Sec.

W 19 1/2 NW 11

Continued on page 130.

183.

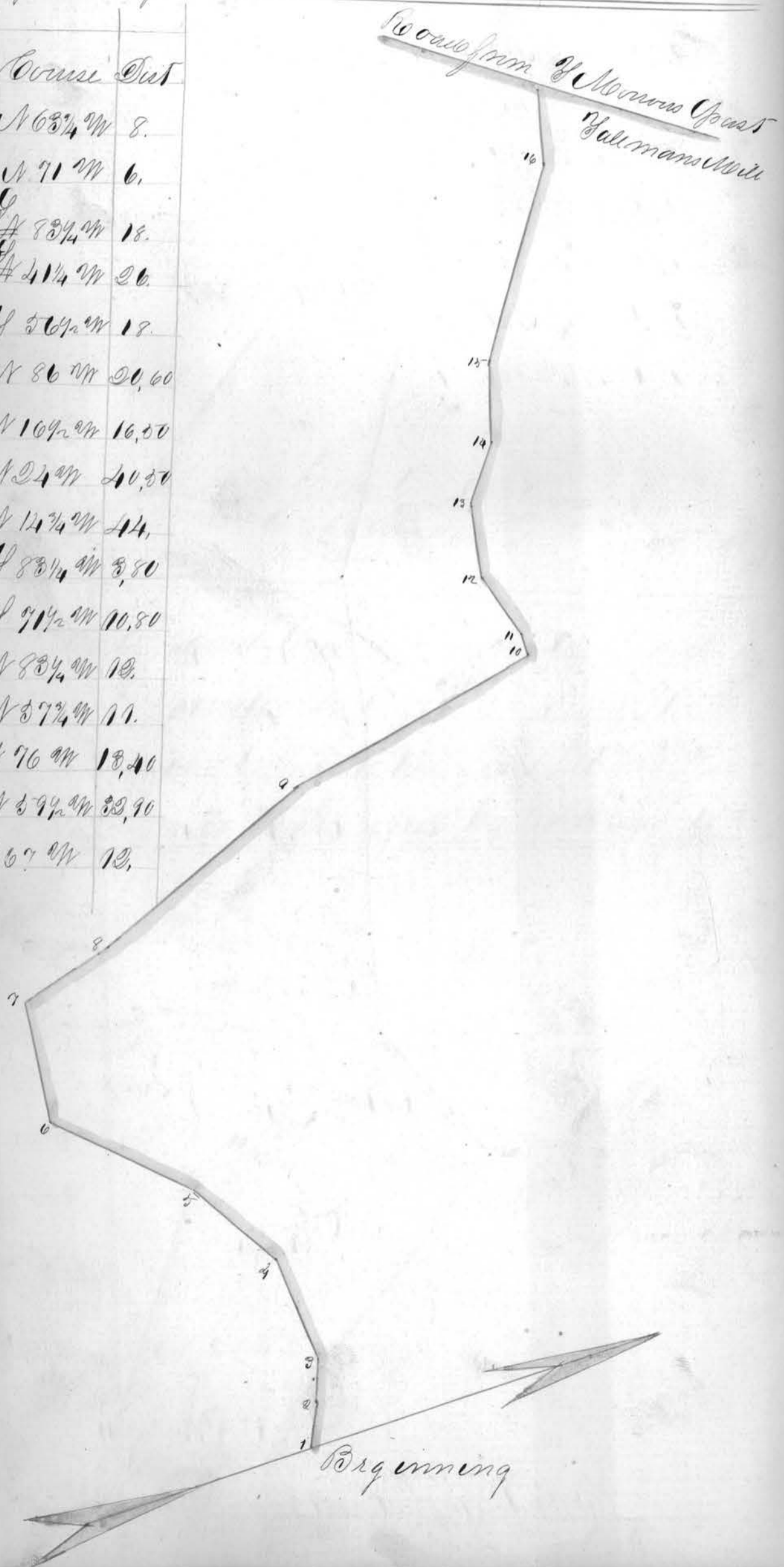
Continued from page 181.



That of a road beginning at 3 mile Stake
 and running thence to the road pas-
 sing S. Morris of Gallmans Mill ad
 Surveyed by James C. Moore A.D., 1838

Plot of a road beginning at 3 mile Stake
 and running thence to the road pas-
 sing S. Marcus & Gallmans Mill ad
 Surveyed by James C. Morse A., D., 1838

Sta	Course	Dist
1	N 63 1/4 W	8.
2	N 71 W	6.
3	S 83 1/4 W	18.
4	S 41 1/4 W	20.
5	S 56 1/2 W	18.
6	N 86 W	20, 60
7	N 109 1/2 W	16, 50
8	N 24 W	20, 50
9	N 12 1/4 W	14.
10	S 83 1/4 W	8, 80
11	S 91 1/2 W	10, 80
12	N 83 1/4 W	12.
13	N 37 1/4 W	17.
14	N 76 W	18, 40
15	N 39 1/2 W	33, 90
16	N 67 W	13.

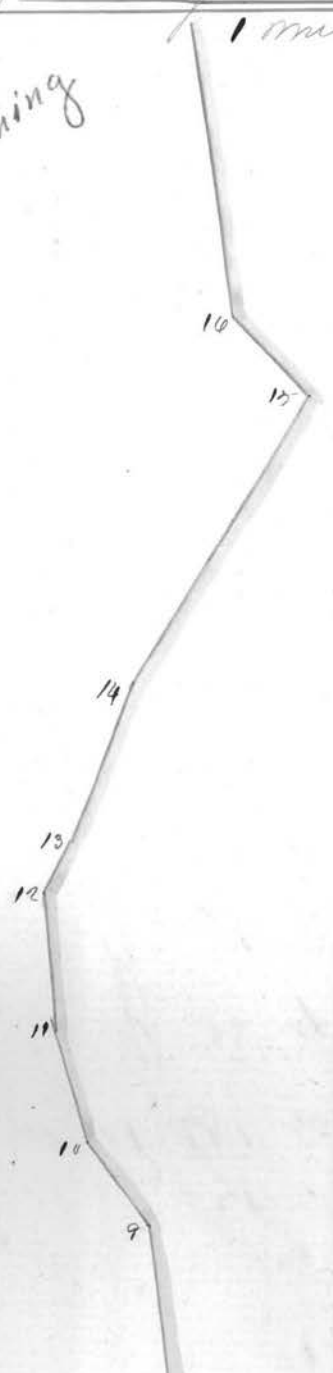


That of a road beginning on the Flashing road near Wrights Saw-mill running thence one mile to a stake near a low oak marked 1 No. as surveyed by A. C. Moore 1838

Flashing

1 mile to a low oak

Sta	Bearing	Dist
1	N 26 1/2 W	23.4
2	N 36 W	19.06
3	N 66 1/2 W	59.0
4	N 57 1/2 W	10.14
5	N 33 W	9.30
6	N 48 W	9.9
7	N 21 1/2 W	14.74
8	N 74 1/2 W	34.9
9	N 73 1/2 W	10.1
10	N 82 1/2 W	11.04
11	N 90 W	14.94
12	N 38 1/2 W	5.08



10 N 82 1/2 W 11,04

11 N 70 W 14,94

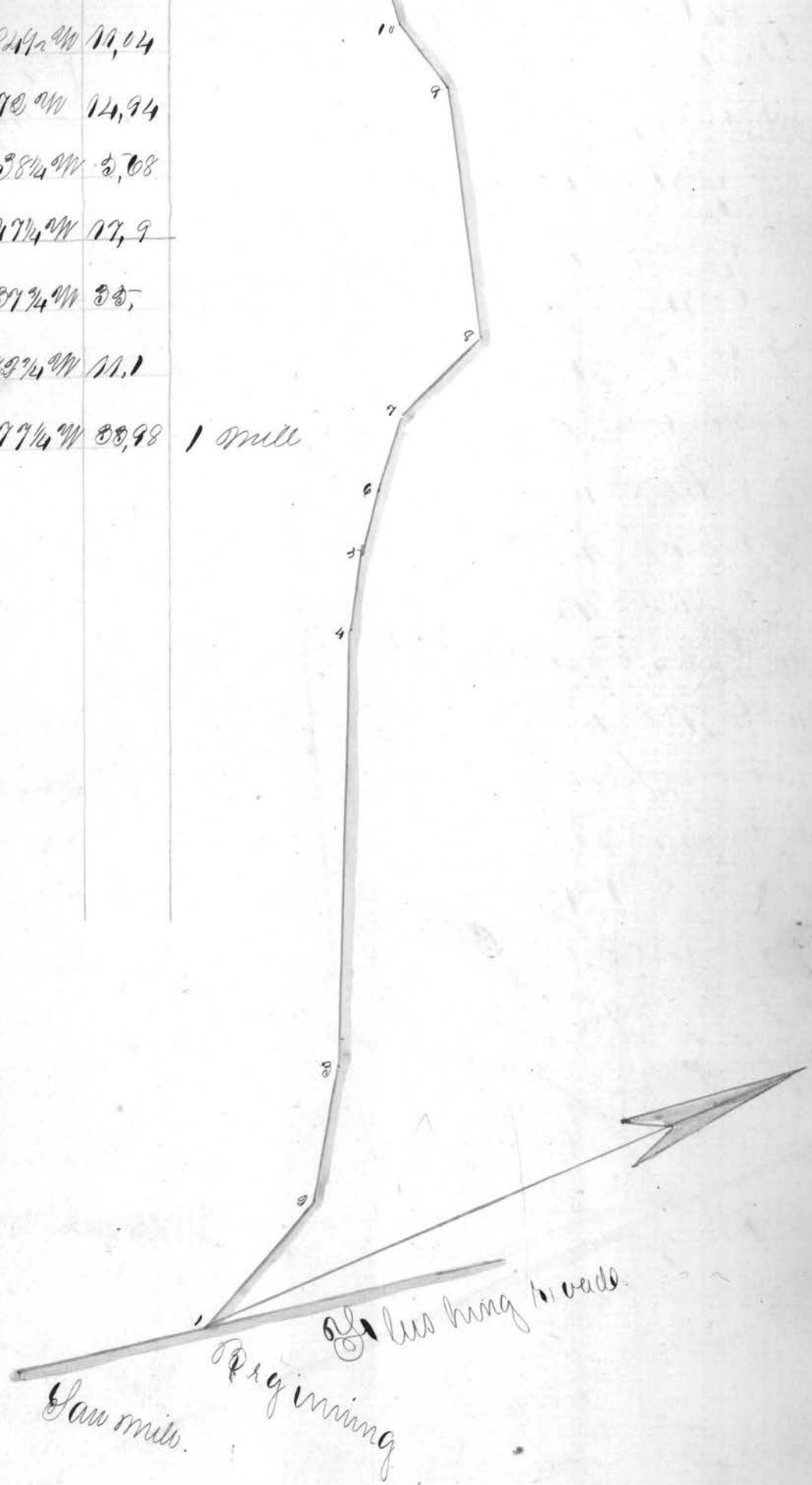
12 N 38 1/2 W 5,08

13 N 27 1/4 W 17,9

14 N 37 1/4 W 33,

15 S 73 1/4 W 11,1

16 N 77 1/4 W 33,98 1 mill

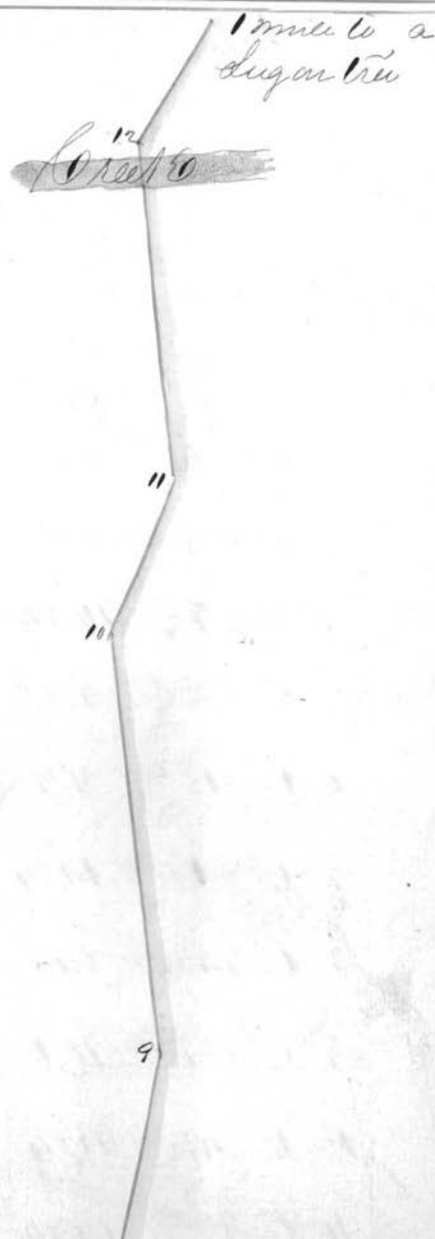


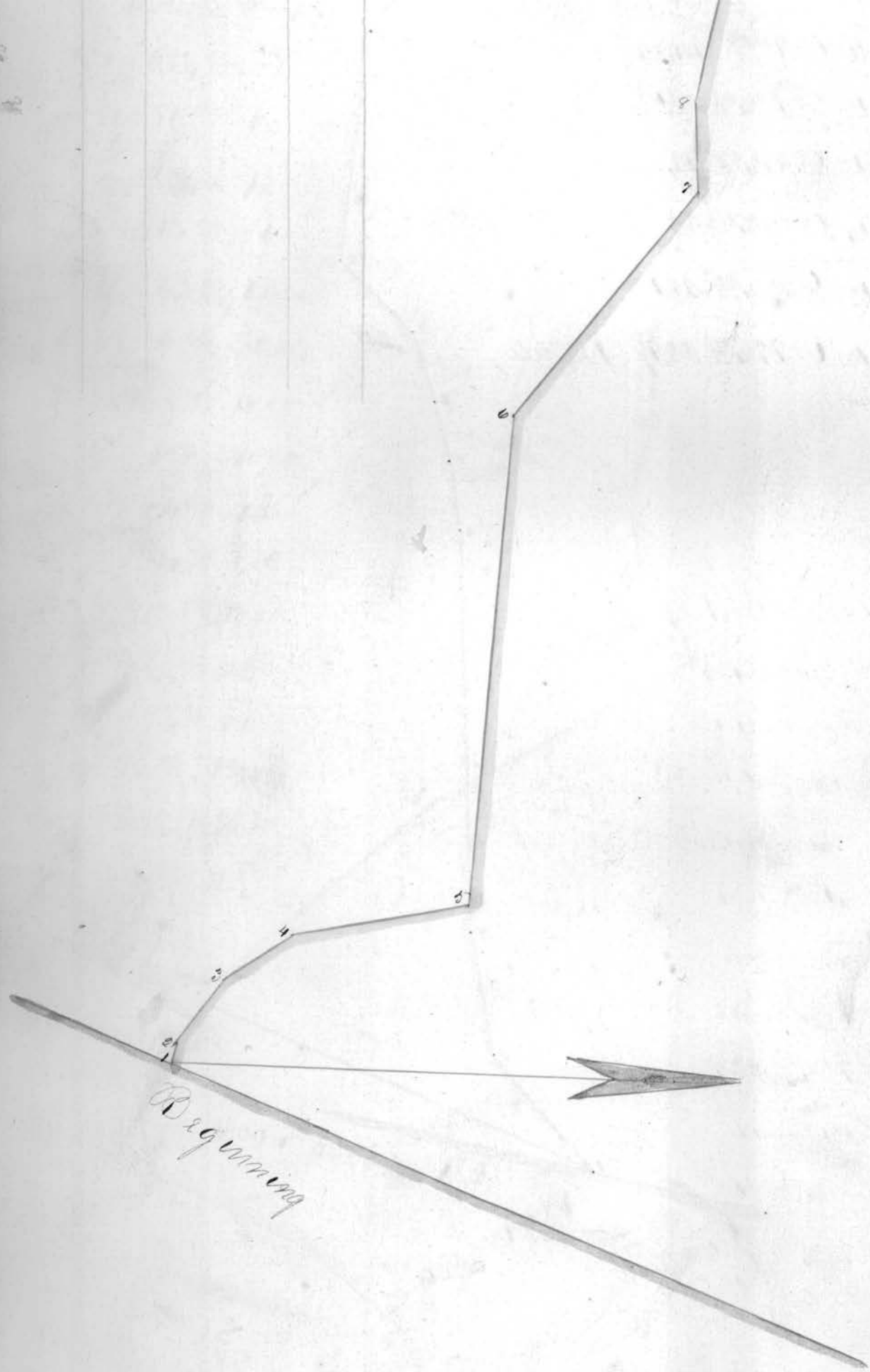
1874

Plot of a road beginning at 1 mile
 stake running thence one mile to a
 Sugar tree marked I. M. as Survey
 ed by James L. Moore A. D. 1838

No	Course	Dist
1	N 79 1/2 W	8.24
2	N 57 W	10.40
3	N 32 1/4 W	11.0
4	N 10 1/4 W	20.
5	N 88 W	9.8.
6	N 58 1/4 W	11.24
7	S 88 1/2 W	13.7
8	N 81 1/4 W	9.7.
9	S 80 1/4 W	11.3
10	N 71 1/4 W	18.
11	S 81 1/4 W	8.3.
12.	N 63 1/4 W	12.7

10 mile

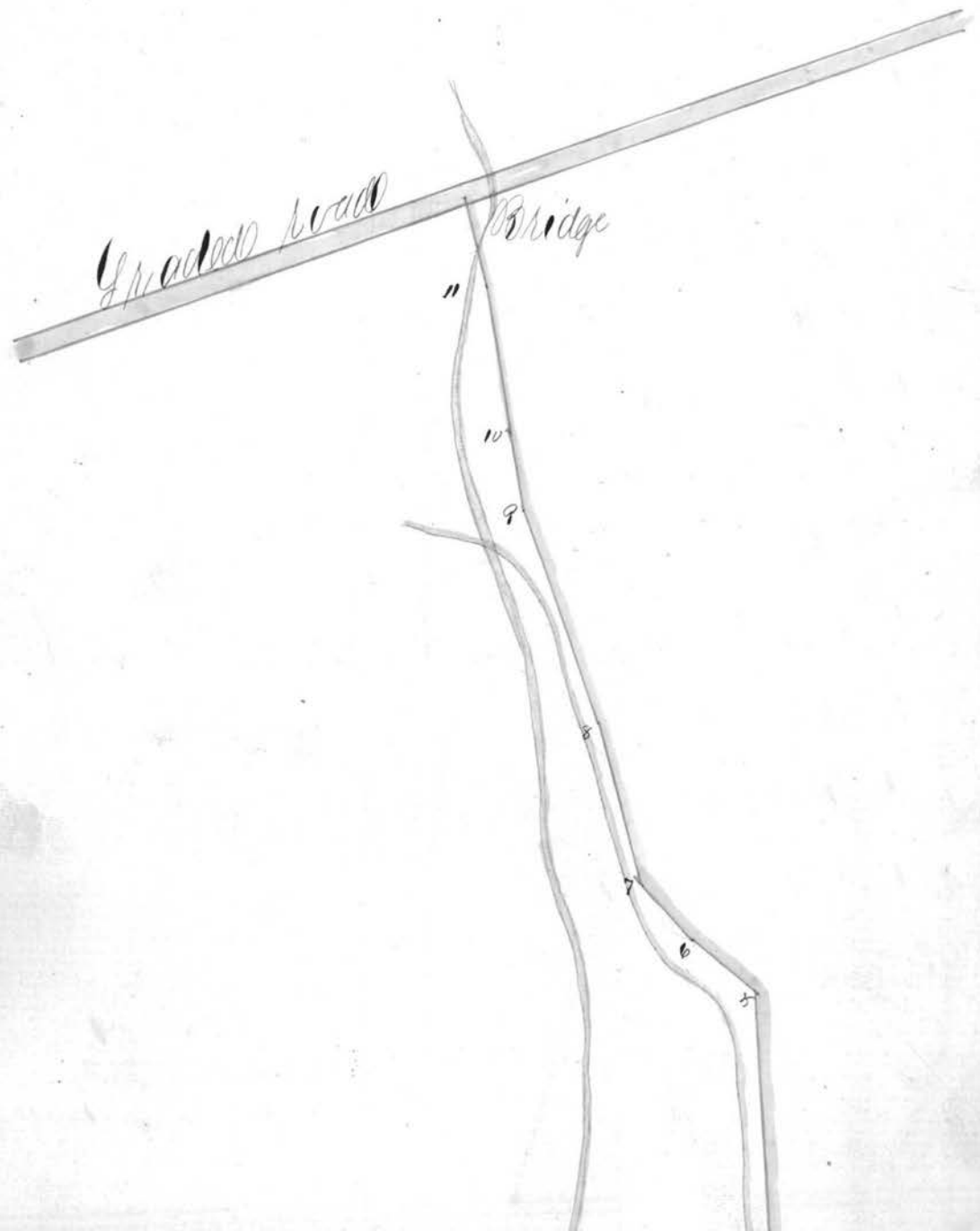




Beginning



That of an alteration of the Hrapert road
 beginning for the same at the line between Mat-
 thew McCall, Thomas McCall & others to a point
 opposite Thomas McCall still house. as sur-
 veyed by James G. Moore A.D. 1838



Gas. Valman's

Chas. Cook's

The Course Dist

- 1 N 89 5/8 W 248.9
- 2 N 89 5/8 W 91.1
- 3 S 89 5/8 W 6.5
- 4 S 89 3/4 W 184.3
- 5 S 21 1/2 W 10.4
- 6 S 49 1/2 W 11.
- 7 S 70 1/2 W 24.3
- 8 S 78 1/2 W 30.7
- 9 S 84 W 11.
- 10 S 89 3/4 W 20.3
- 11 S 76 3/4 W 18.

320

4
2

Road cut

310.7 spots

Quarry
Chas. M. Cook

Old house

Street front roads

Continued on p. 136

Continued from page 153

Division of W. L. Loring & Co.

Saw mill Blushing
~~Bridge~~
Beginning roads

Plot of a road beginning at The mouth
of Mudlick run running thence up said
run to the State road near Ephraim Smiths
Dunin as surveyed by Jas. C. Moore A.D. 1838

Grade road

E Smiths
Dunin.



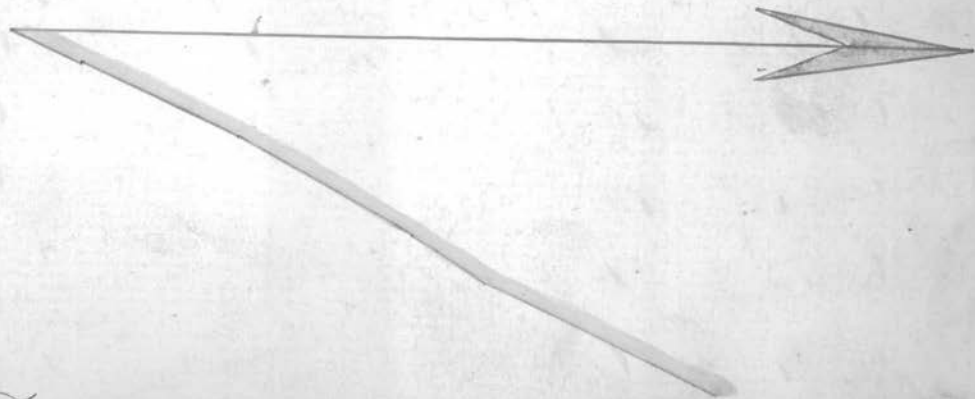
No	Course	Dist
1	N 36 1/4 E	10,4
2	N 70 1/2 E	22,4
3	N 70 E	29
4	N 32 E	27,5
5	N 65 1/2 E	18,8
6	N 27 1/2 E	18,8
7	N 9 E	14,8
8	N 36 E	10,4
9	N 40 1/2 E	24,8
10	N 24 E	20,8
11	N 19 1/2 E	20,5
12	N 1/2 W	37
13	N 23 E	28,9
14	N 43 E	10,5
15	N 42 E	10,4
16	N 57 1/2 E	17,8
17	N 37 E	20,8
18	N 67 1/2 E	7,8
19	N 30 1/2 E	11,6
20	N 29 1/2 E	19,1
21	N 24 E	24,8
22	N 37 E	18

Continued on page 157.

Continued from page 156.



Plan of a roads beginning at Stevens-
ville running thence to intersect
the State road from Mt Pleasant to
Warren, east of Mt Pleasant as surveyed
by James Dillen A.D., 1838



Continued on Page 158.

Continued from page 157.

Sta. Course Dist.

1	S 24 W	10.
2	S 25 W	36.
3	S 26 W	20.
4	S 29 W	18.
5	S 24 W	32.
6	N 85 W	92.
7	N 74 1/2 W	38.
8	N 77 1/2 W	22.
9	N 80 1/2 W	36.
10	N 83 1/2 W	20.
11	N 74 W	30.
12	N 76 1/2 W	34.
13	S 82 W	36.
14	S 75 W	26.
15	S 80 W	50.
16	N 75 1/2 W	38.
17	N 66 W	28.
18	N 66 W	24.
19	N 60 W	24.
20	N 38 W	22.
21	S 25 W	2.
22	S 20 W	16.
23	S 32 W	12.
24	S 27 W	8.
25	S 55 W	12.

One mile

One mile

One mile

- 1 S 25° W 2.
- 2 S 40° W 10.
- 3 S 52° W 12.
- 4 S 27° W 8.
- 5 S 55° W 14.
- 6 S 29° W 8.
- 7 S 50° W 14.
- 8 S 65° W 10.
- 9 S 75° W 12.
- 10 N 75° W 24.
- 11 S 68° W 8.
- 12 S 41° W 2.
- 13 S 20° W 14.
- 14 S 25° W 20.
- 15 S 52° W 39.
- 16 N 74° W 32.
- 17 N 70 1/2° W 33.
- 18 West 30.
- 19 S 57° W 20.
- 20 S 37° W 20.
- 21 S 61° W 21.
- 22 N 69° E 10.
- 23 N 24° E 10.
- 24 N 13° E 20.
- 25 N 4° E 0.

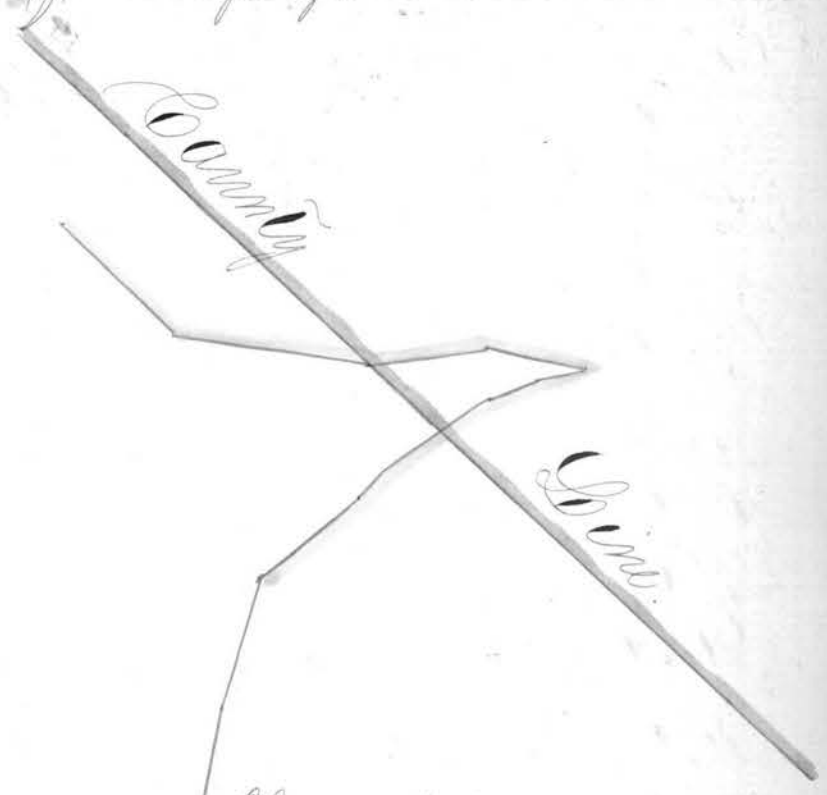
Two miles

Three miles

Three miles

Continued on page 159.

Continued from page 158



How Moies

Five Moies

11 1750 26

12 1770 38

4 miles

13. N 30° W 29

1. N 43° W 30.

2. N 60° W 30.

3. N 38° W 104.

4. N 22° W 100.

5 miles

5. N 30° W 84.

1. N 30° W 10.

2. N 0° W 78.

3. N 54° W 14

1080/2.