

Continued from page 139

S 85 1/2 E 21.

W 63 1/2 E 24

S 74 1/2 E 14

W 84 E 15.

W 28 E 19.

W 48 1/2 E 30.

S 88 E 38.

W 89 1/2 E 19.

Upper Hat road.

That of a road beginning Braziers Mill  
running thence to intersect the County road  
from Ecker Mill to Shivers Mill, as surveyed  
by William Shepherd A.D. 1837

West 50. Updes.

866 NW 6.

890 NW 26.

886 NW 6.

846 NW 12.

839 NW 20.

880 NW 24.

831 NW 30.

854<sup>2</sup> NW 26.

879<sup>2</sup> NW 24.

861 NW 20.

831 NW 32.

892 NW 16.

89 NW 24.

852 NW 10 24

826<sup>2</sup> NW 32.

888 NW 10.

865 NW 28.

Continued on page 141.

Continued from Page 140

870 W 10.

828 W 20.

U 85 W 20.

875 1/2 W 22.

860 W 20.

880 W 28.

822 W 8.

U 82 W 24.

863 W 21.

834 1/2 W 14.

850 W 10.

885 1/2 W 11.

860 W 18.

West 37

888 W 10.

U 86 W 24

884 W 20.

N 72 W 22.

N 88 1/2 W 26.

S 66 W 14

N 85 W 20.

S 85 W 50

N 85 W 18.

N 45 W 45.

S 80 W 24

Beginning

That of an alteration on the road from  
 the mouth of Brooks run intersecting the  
 road from Eccles mill to Shivers mill, said  
 alteration begins at Isaac Postmans Saw mill  
 and intersects said road from Eccles mill to  
 Shivers mill near Andrew Mc Harlands Lane  
 as Surveyed by William Shepherd: 1837

Beginning

S 81 W 24

To continue on

Page 148.

Continued from page 141

888 W 22.

8842 W 40

857 W 10.

876 W 10.

858 W 18.

876 W 32.

820 W 17.

881 W 8.  
879 W 10

833 W 26.

8574 W 4.

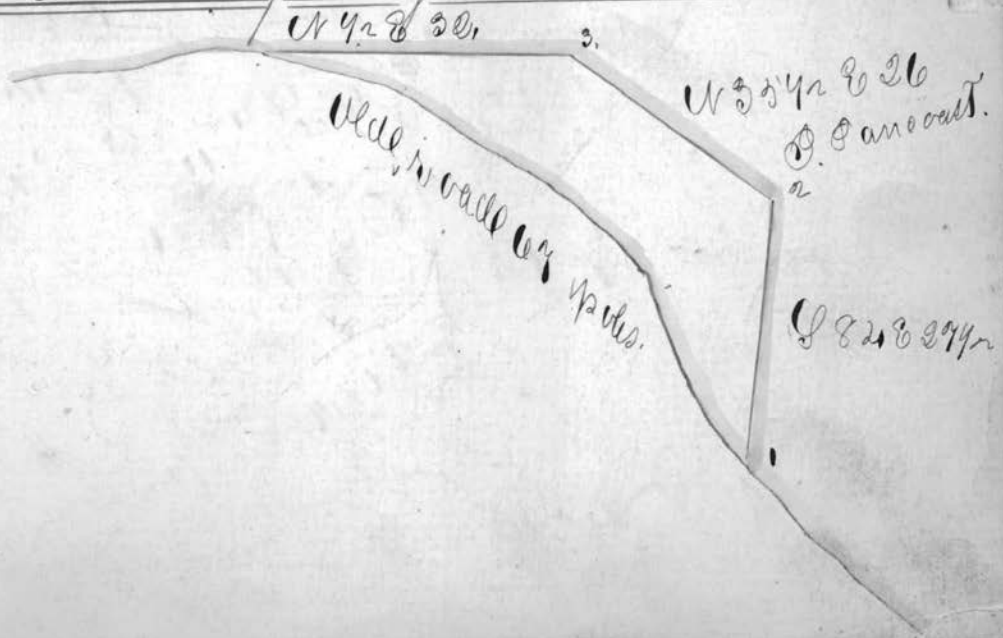
850 W 32.

881 W 23.

826 W 23.

West 18 Upoles.

That of an alteration on the road from  
 Belmont to the National road begins  
 at John Hancock running thence to the  
 line between John Carter & Robt. Wall. Thence to the  
 road aforesaid as Surveyed by Thos Lewis A. D. 1837



That of a road beginning on the cross  
 road from the Poplar flat road to the  
 Bellville road on Dillons run near  
 Powells and ends on the Bellville road near  
 the mouth of said run as surveyed by Thomas  
 Lewis A.D. 1837.



Wain Elm Elm.

N 56 E 18.

N 26 E 32.

N 25 E 31.

N 14 N 21.

N 28 N 20.

N 32 N 19.

N 22 N 20.

N 14 N 10.

N 42 E 12.

N 45 E 28.

S 87 E 12.

S 77 E 22.

S 81 E 23.

N 18 E 28.

N 23 E 20.

To an Elm. 1 mile

N 90 E 16.

N 81 E 21.

S 75 E 18.

S 38 E 8.

S 71 E 20.

N 59 E 20.

N 67 E 29.

N 89 E 22.

S 38 E 13.

S 71 E 19.

Ann Cornish

N 60 E 30.

N 84 E 8.

N 70 E 18.

S 61 E 14.

S 38 E 13.

Ann Cowles

S 24 E 21.

S 20 E 11.

Orwell

N 83 E 20.

To road.

Wain Elm Elm.



144  
Plat of an alteration on the roads on the  
West Side of Captina, in the road from near  
the mouth of Catts run to Woodsfield on  
the land of Robert Green as surveyed by  
Thomas Lewis A.D. 1837

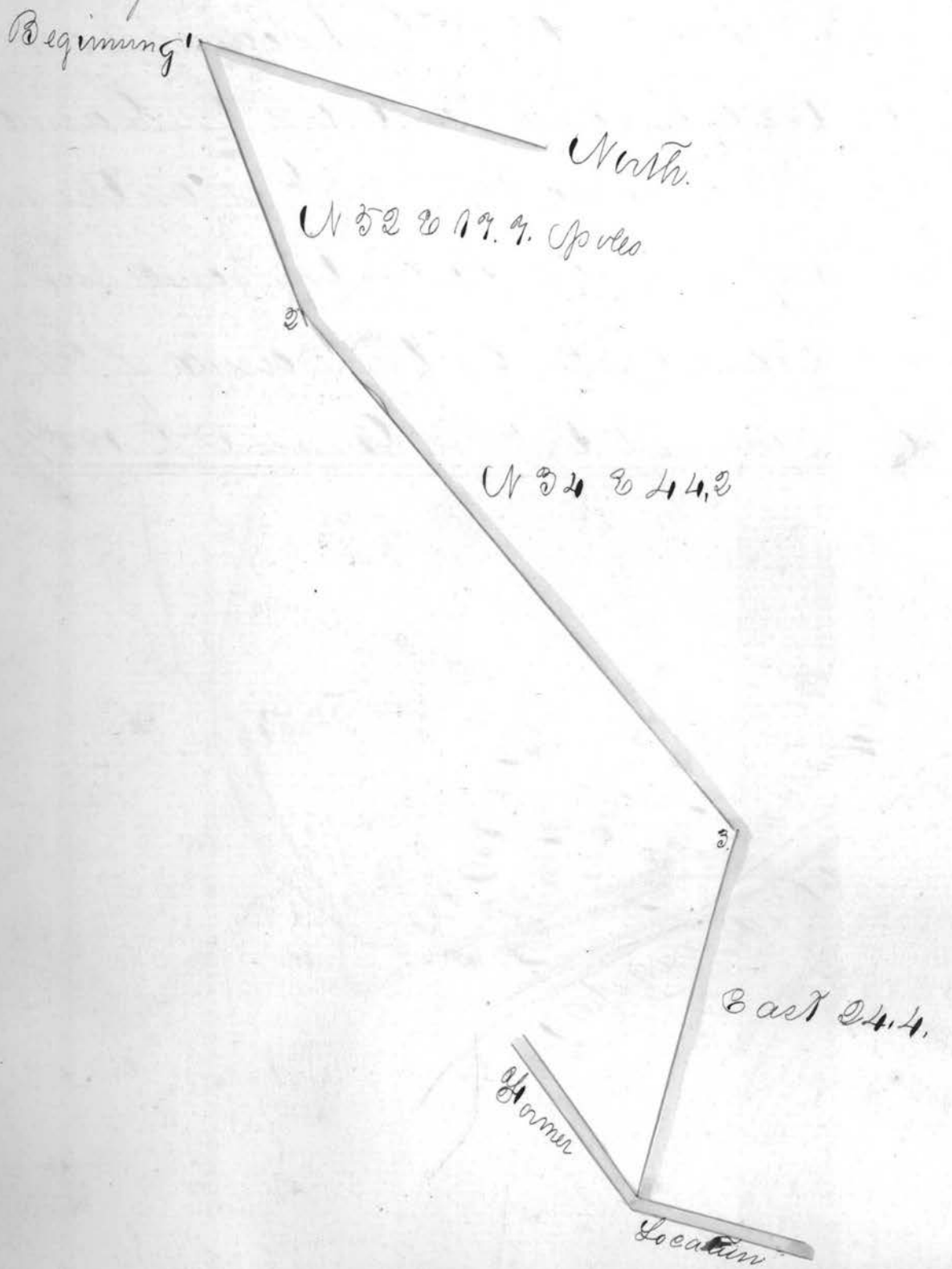
The second is on the West side of Catts  
run on the aforesaid road on the land  
of Jacob Seward The 3<sup>rd</sup> is on the north  
side of Captina Creek on the road run-  
ning up said creek on the land of James  
Moor. Surveyed by Thos Lewis A.D. 1837

*Pachima Gualta*  
 3000 m  
 3000 m  
 3000 m

2914 m 12.  
 2920 m 6.  
 2500 m 8.  
 2424 m 8.  
 200 m 14. *Boat Greaves*.  
 2804 m 10.  
 295 m 8. *2nd alteration*

*Pachima Gualta*  
 2234 m 18.  
*Boat Greaves*  
 230 m 11.  
*1st alteration*


Plot of a road beginning near the late dwelling house of <sup>Wm</sup> Campbell dec<sup>d</sup> running thence to the line between lands of said Campbell and A. Kennard as surveyed by Jas. C. Moore A. D. 1887



That of a road beginning on the Free-  
port road at a white walnut running  
thence to the line between D. Hoagen & Jas  
Wainis to the graded road near the school  
house, as surveyed by Jas. C. Moore 1838.

---

Freeport road  
beginning

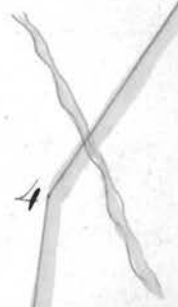


Continued on page 140.

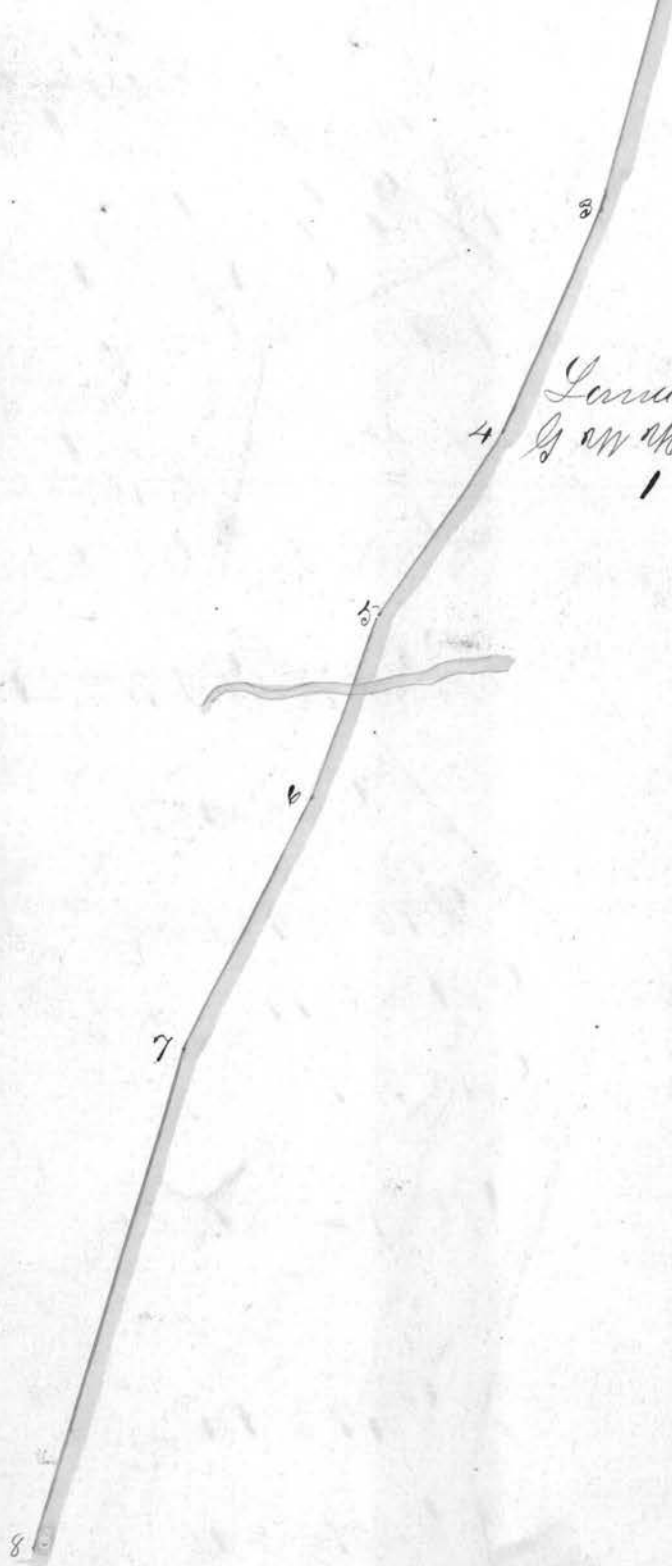
Continued from page 145

Some between banks of River of Merion

Gen Morgan



1 mile to a sugar

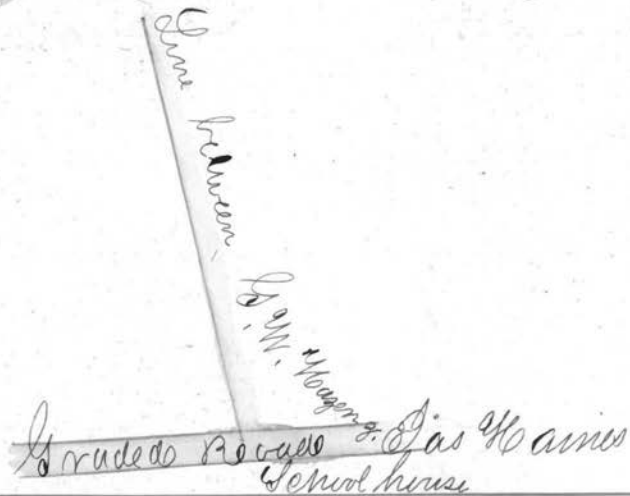


The Course Dist

1	S 60° NW	39.7
2	S 37 1/4° W	33.8
3	S 22 1/2° W	36.
4	S 29 1/2° W	10.3
1	Same	5.7
2	S 37 1/4° W	43.3
3	S 46 1/2° W	36.
4	S 56 1/4° W	33.
5	S 41° W	31.1
6	S 49° W	28.9
7	S 38 1/2° W	37.46
8	S 24° W	43.
		243.46

Continued on page 148.

Continued from page 147.



That of a County road beginning near  
 William & Simpsons running thence  
 to intersect the road up Captina road at  
 Stearnsville, as surveyed by.

A. D. 1838

York

Barrening  
89 E 10.51

87 E 10.5  
87 E 10.5  
874800.

889 E 18.14

867 E 7.10

864 E 10.7

846 E 9.19

856 W 8.10  
842 E 5.14

870 E 20.10

800 1/2 E 18.50

881 E 00.18

840 E 0.28.

817 W 01.18

85 W 15.8

810 W 12.00

801 E 0.11

845 E 9.

855 1/2 E 00.

847 E 14

800 1/2 E 10

824 E 10.

835 E 12

Page 149.

Continued on



Continued from page 148

S. 10. E. 16

S 53 1/2 E 04

S 27 E 8.

S 60 E 8.

S 40 E 10.

N 86 E 6.

N 58 E 15

S 27 E 10.

S 88 E 20.

S 67 W 13 1/2

S 2 E 19.

S 80 W 19.

S 50 W 40.

S 2 E 10.

S 84 W 30.

S 23 W 13 1/2

S 18 W 15-

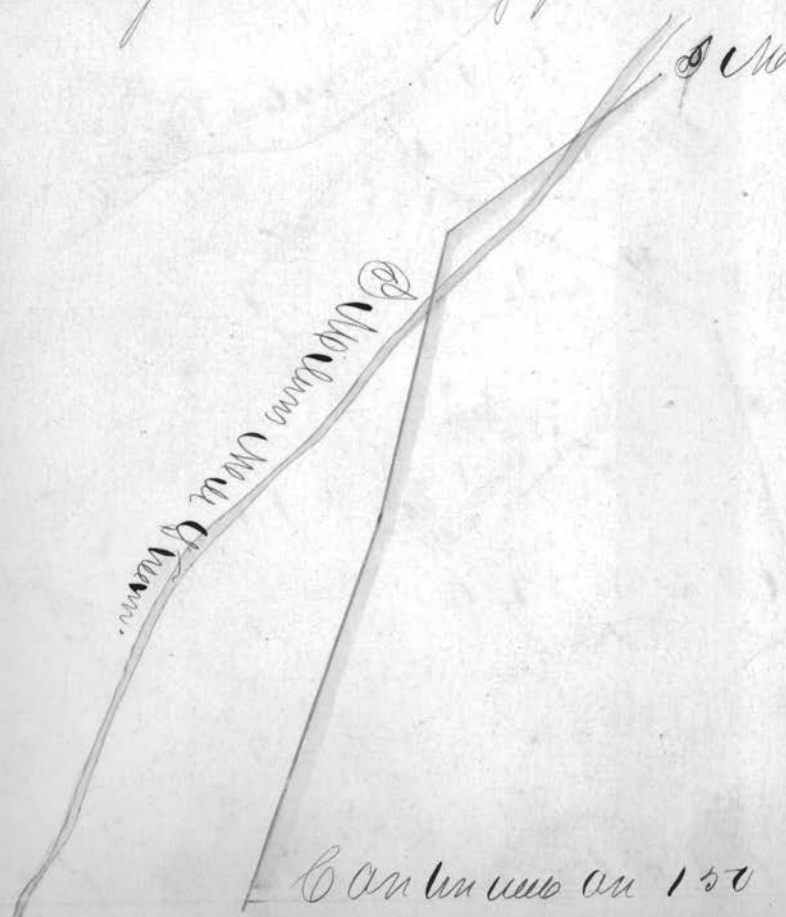
S 17 W 15.

S 19 W 20

S 28 W 10.

S 40 W 10. 1/2 miles.

That of a road beginning at Gillians  
 Mill running thence to the road from  
 the National road to Barnesville as de-  
scribed by Job Briggs A. D. 1838



Course	Dis
S 92 1/2 E	14
N 66 E	16
N 72 1/2 E	22
N 79 1/2 E	24
N 93 E	44
East	18
N 69 E	10
N 79 1/2 E	16
N 88 E	23
	<u>191</u>

Barnesville on 150