



Jan 18 1880

Y 11 3/4

10 miles to a  
dog woods

Y 30 1/2 8 25

Y. 20

Y 10 1/2 8 20

Y 8 1/2 8 20

Y. 23

Y 2 1/2 8 20

Y 1 1/2 8 20

Y 5 1/2 8 20

Y 9 1/2 8 20

Y 10 1/2 8 20

comes to a white oak

Y 20 1/2 8 20

Y 31 1/2 8 20

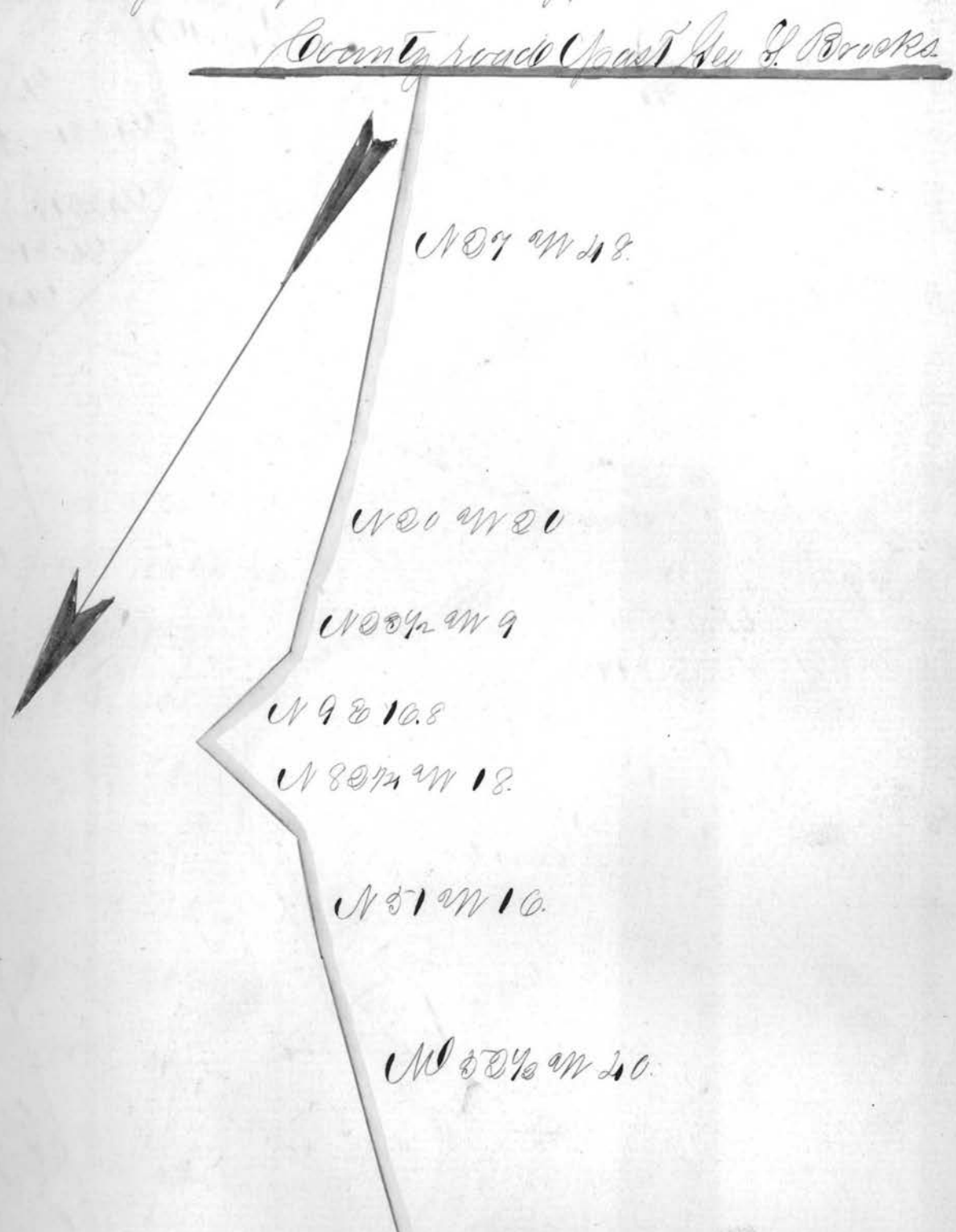
Y 28 1/2 8 20

Y 27 1/2 8 20  
Y 20 1/2 8 20

Growth 50.

Road from Junction to Barnesville

That of the road beginning near a  
 Black Tree on the County road that runs  
 past Geo. P. Brooks and intersects the County  
 road that runs past Wrights Sawmill  
 as Surveyed by Job Briggs A.D. 1835



N 87 1/4 W 30.

N 49 1/2 W 18.

N 53 W 33.

N 61 1/2 W 12.

N 21 1/2 W 20.

N 12 1/2 W 0.

N 7 1/2 W 0.

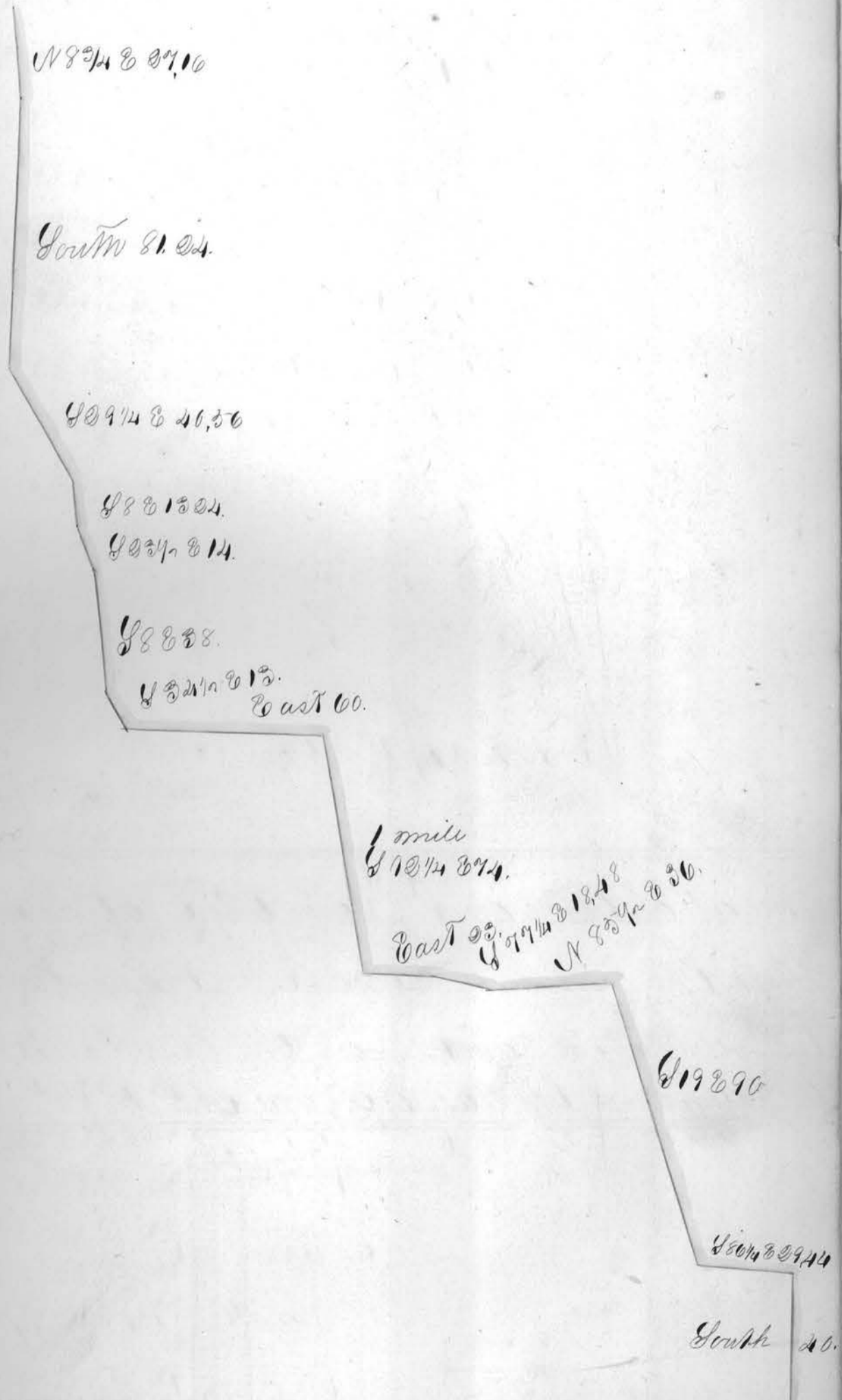
N 52 1/2 W 30.

N 49 1/2 W 18.


County road past NW 1/4 to San mine

That of the road beginning at the west end  
 of John Vandau's lane running thence to inter-  
 sect the road from Lewis Mill to St. Chas-  
 ville, as surveyed by Jos. W. Patterson, 1835

Beginning



That of the road beginning when the State  
road and the Flushing & Mount Pleasant road  
intersect each other and terminates at or  
near the center of Lot No 10 of Range 5  
as Surveyed by Thomas Lewis A.D. 1835



N 86° W 40.

N 6 W 24

Continued on page 103.

Continued from page 109.

N 7 2/3 W 50

N 10 1/2 W 88.

Dobbins road.

N 8 1/2 E 18.

N 28 1/2 E 15.

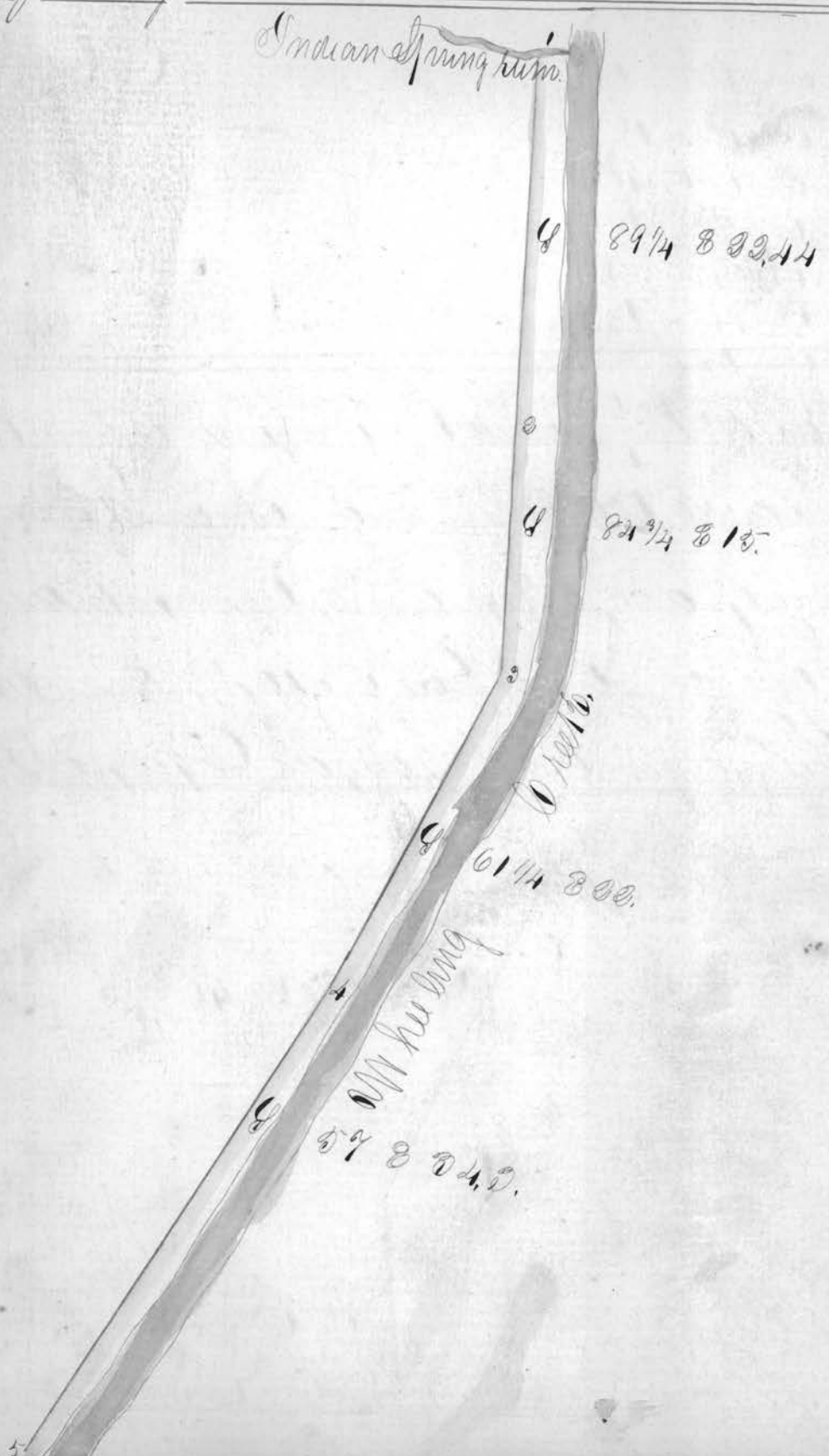
N 3 1/2 E 58.  
road.

McQuarrie

N 10 1/2 E 10.



That of the road from the National road,  
thru the lands of John Bell & Thos and in-  
tersecting said road near the Belmont Mills  
as surveyed by Jas. C. Moore, A. G., 1830<sup>l</sup>





Plan of a road beginning at a bridge on the  
 Barnsville road East of Perry Buchanan's  
 thence to the National road near John McCast-  
 ney's mill as surveyed by John C. Kemmer A.D. 1835

Sta	Courses	Dist
33	N 53 E	30
31	N 61 1/2 E	38
30	N 43 1/4 E	16
29	N 37 1/2 E	7
28	N 19 E	11
27	N 34 E	24
26	N 48 1/4 E	17
25	N 5 E	10
24	N 27 W	21
23	N 43 3/4 W	17
22	N 6 W	21
21	N 2 E	13
20	N 14 E	20
19	N 34 W	20
18	N 16 1/2 E	10
17	N 60 1/2 E	12, 10
16	N 6 1/4 W	20
15	North	20, 19
14	N 25 W	15, 21
13	N 17 W	18
12	N 28 W	8
11	N 20 W	10
10	N 37 1/4 W	20
9	N 37 W	20
8	N 41 W	10
7	N 20 W	46
6	N 30 W	10
5	N 27 W	24
4	N 49 W	10
3	N 30 1/2 W	22
2	N 37 1/2 W	20
1	N 83 1/2 W	18
0	N 70 W	17, 10



Proceedings Com. Jof. Rd. Rec. 4 1835-57  
 Page 16, 17, 33  
 See also Rd. Rec. Blue 3, P. 143

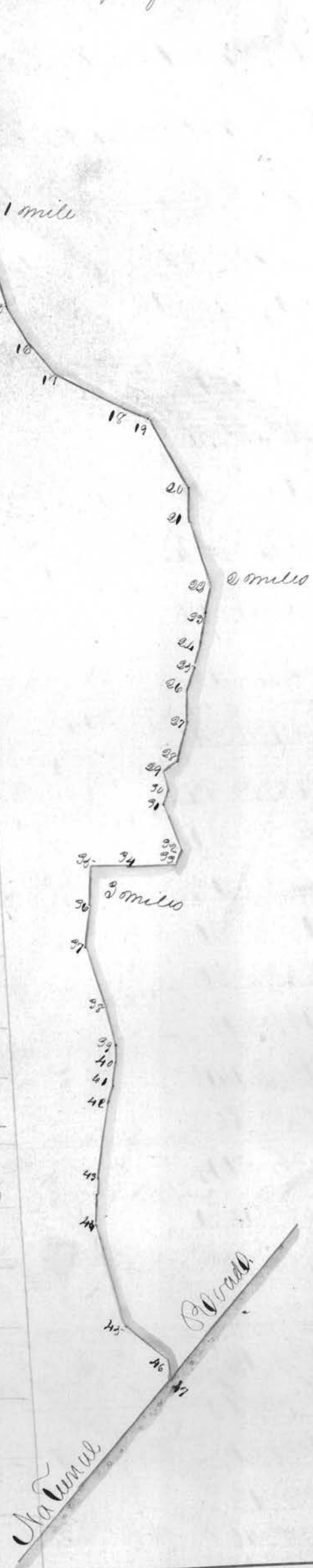
That of the road beginning at a W. oak on  
the State from Barnesville to Morris town, near  
Shos Smith's running thence to the Kelgate  
west of Morris town as surveyed by John  
Kermon A. D. 1835



Continued on page 105.

Continued from page 104.

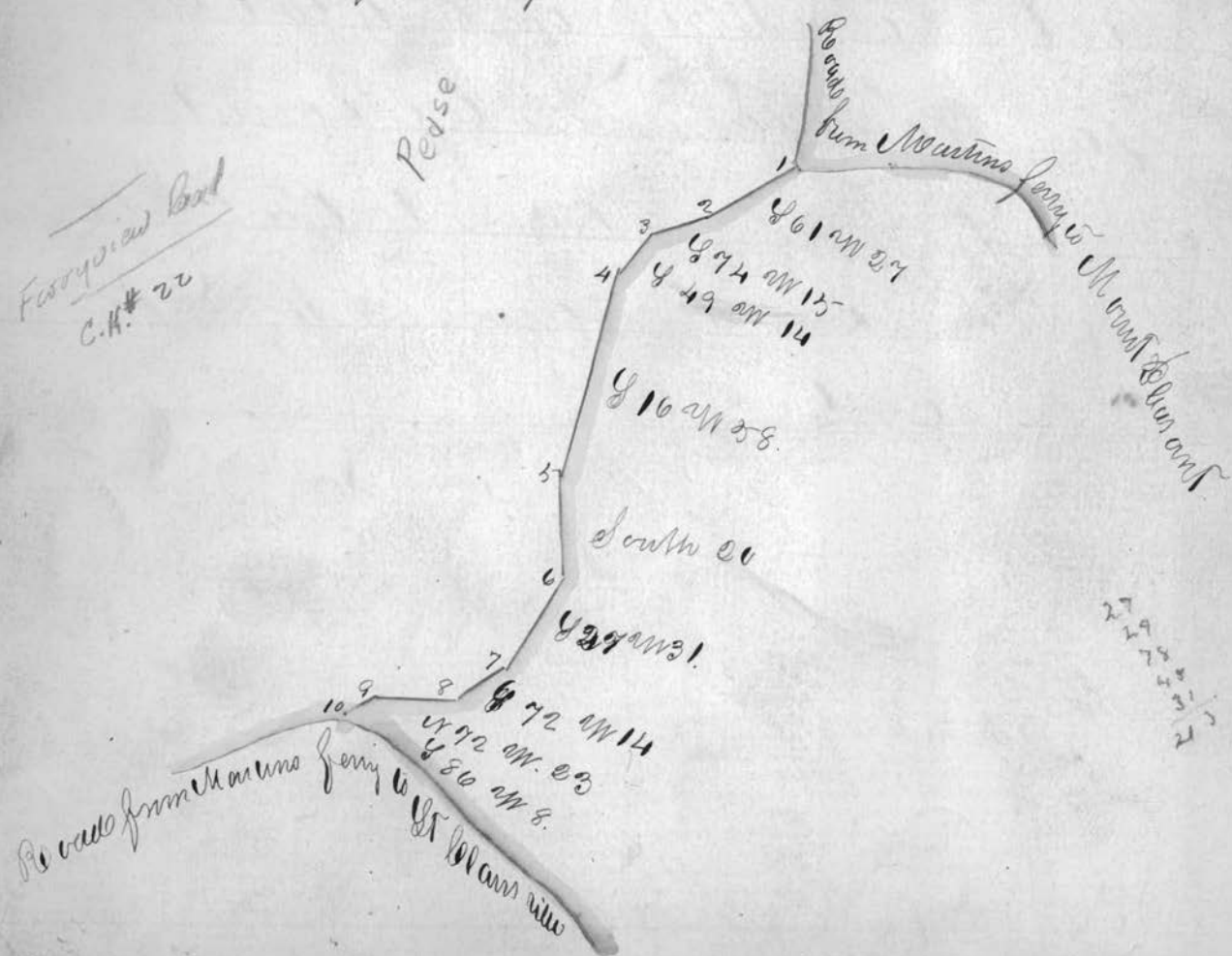
Course	Dist	27	28	29	30	31	32	33	34	35	36	37	38	39	40	41	42	43	44	45	46	47	48	49	50																																																
N 99° W	20.20	N 71° E	16.11	N 48° E	20.	N 60° E	29.18	N 81° E	18.	N 81 1/2° E	11.11	N 71 1/2° E	8.9	N 60 1/2° E	30	N 83 1/4° E	11.	N 44 1/4° E	20.	N 55° E	29.12	N 36° E	17.	N 39° E	24.	N 46° E	35.5	N 55° E	28.	N 31 1/2° E	20.	N 81 1/2° E	29.14	N 89 1/2° E	19.12	N 54 1/2° E	26	N 88° E	27.5	N 35° E	22.	N 33 1/4° E	20.	N 10° E	26	N 57° E	24	N 125° W	49.11	N 53° E	16.	N 11° W	19.	N 77 1/2° E	29	N 35° E	25	N 49° E	22.	N 70° E	28	N 39° E	24.7	N 17 1/2° E	4	N 31 1/4° E	44.	N 39° E	18	N 35 1/4° E	19	N 62° E	13.9



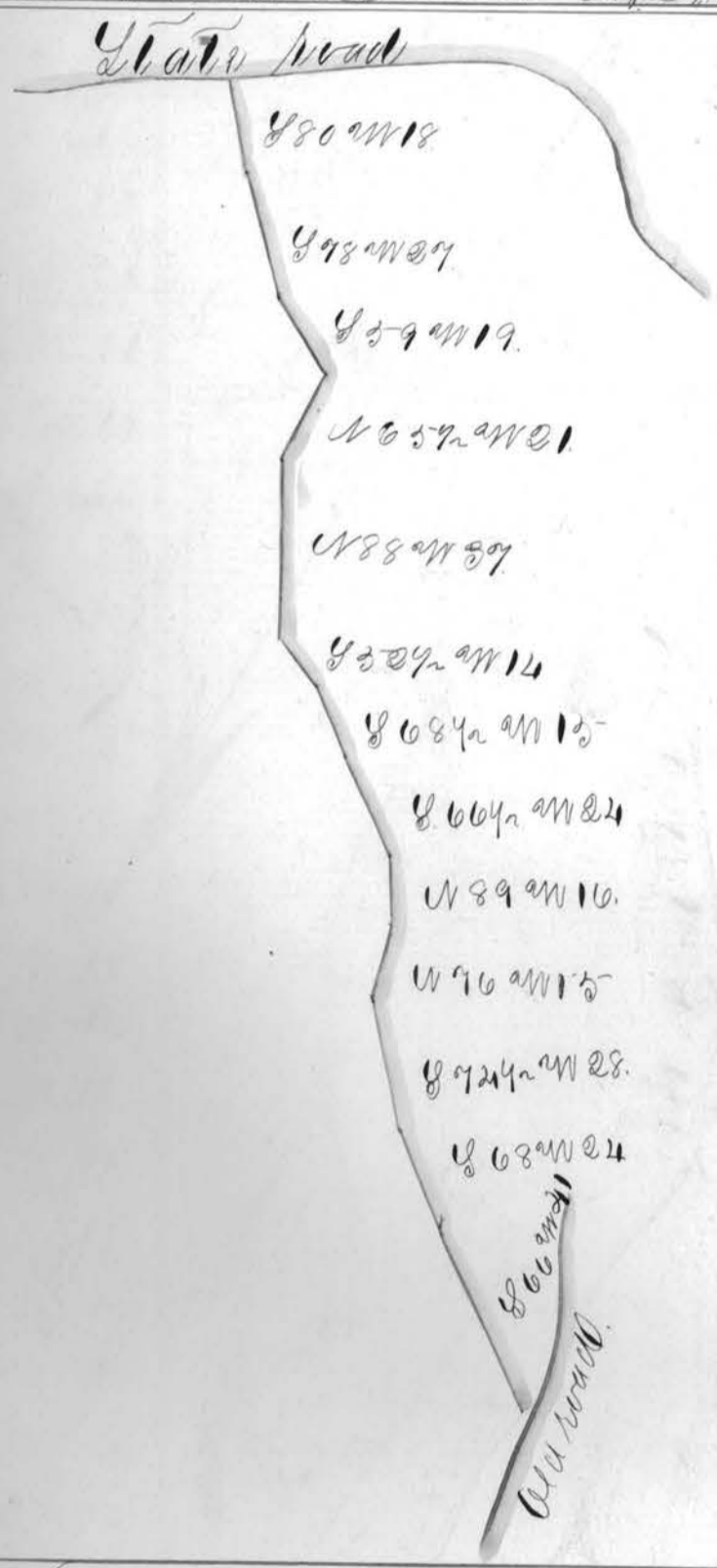
That of a road beginning on the hill on  
 the road from Martins ferry and ending  
 at the old road from Martins ferry to St Clair  
 ville as surveyed by Lewis Walker A.D. 1835

Ferry view East  
 C.H.# 22

Pease



That of a road beginning at a Stone Mon-  
 ument near the E. boundary of Sec. 21. T. 6  
 R. 4. and terminates on the State road  
 near Saml. Potts fields as Surveyed by  
 Thomas Lewis A.D. 1835



That of an alteration of the State road  
 from Barnesville to McCannelville  
 and the Branch road from McCon-  
 neys to Warrenton where said roads  
 pass upon the lands of John Potts  
 on the S.W. quarter of Sec. 31. T. 6 R. 4 range 6.  
 as Surveyed by J. M. Harrison A.D. 1835

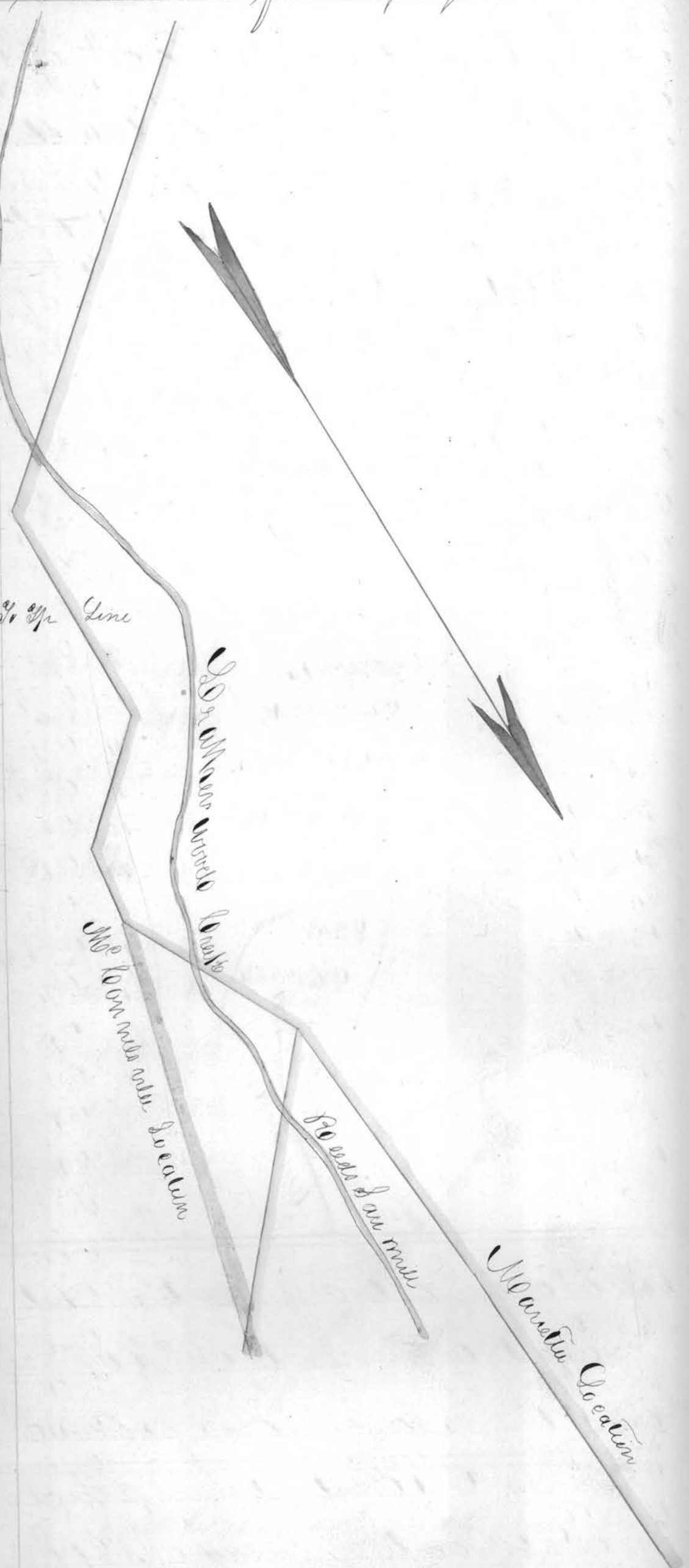
Somerset Co.  
 of Pennsylvania  
 Location  
 Mine  
 No. 100  
 Location

Location of vein  
 of coal

Continued on page 107.

Continued from page 106.

Course	Dist
N 77 1/4 E	.13
S 57 E	.53
S 64 E	35.80
S 37 E	17.44
S 8 W	6.96
S 48 W	11.88
South	20.
S 57 W	21.56
S 49 W	35.90
S 73 W	13.
S 47 W	9.44
S 31 W to S	13.32
S 1/2 W	16. 3/4 Sp



Plan of a State road from Cadiz in  
Marion County Va. New Athens to St-  
Clansville Belmont County Ohio as  
Surveyed by John Ames Esq. A.D. 1836

Beginning on the west street of Cadiz.

Eversey Co  
Wheeling  
Rich, d

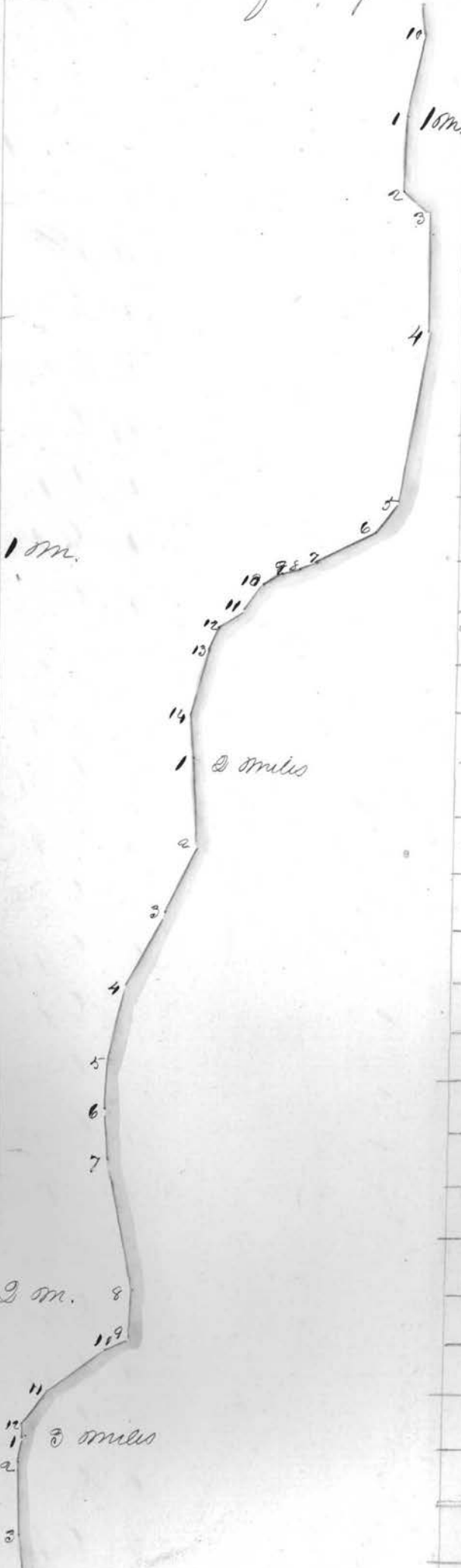


Continued on page 108.



The Course Out Continued from page 107.

1	S 9 <sup>th</sup> W	08
2	S 8 <sup>th</sup> W	103
3	S 20 <sup>th</sup> W	13.
4	S 46 <sup>th</sup> W	23.
5	S 30 <sup>th</sup> W	11
6	S 5 <sup>th</sup> E	6
7	S 1 <sup>st</sup> W	12
8	S 1 <sup>st</sup> E	16
9	S 9 <sup>th</sup> E	12.
10	South	36 320
1	S 12 <sup>th</sup> E	31
2	S 38 <sup>th</sup> E	14
3	S 18 <sup>th</sup> E	50.
4	S 5 <sup>th</sup> E	70.
5	S 24 <sup>th</sup> W	16.
6	S 49 <sup>th</sup> W	22.
7	S 34 <sup>th</sup> W	6.
8	S 57 <sup>th</sup> W	7.
9	S 25 <sup>th</sup> W	10.
10	S 21 <sup>st</sup> W	14
11	S 37 <sup>th</sup> W	13.
12	S 13 <sup>th</sup> W	10
13	S 3 <sup>rd</sup> W	30.
14	S 14 <sup>th</sup> E	17 320
1	S 14 <sup>th</sup> E	35
2	S 9 <sup>th</sup> W	35
3	S 16 <sup>th</sup> W	35
4	S 3 <sup>rd</sup> E	32.
5	S 3 <sup>rd</sup> E	33.



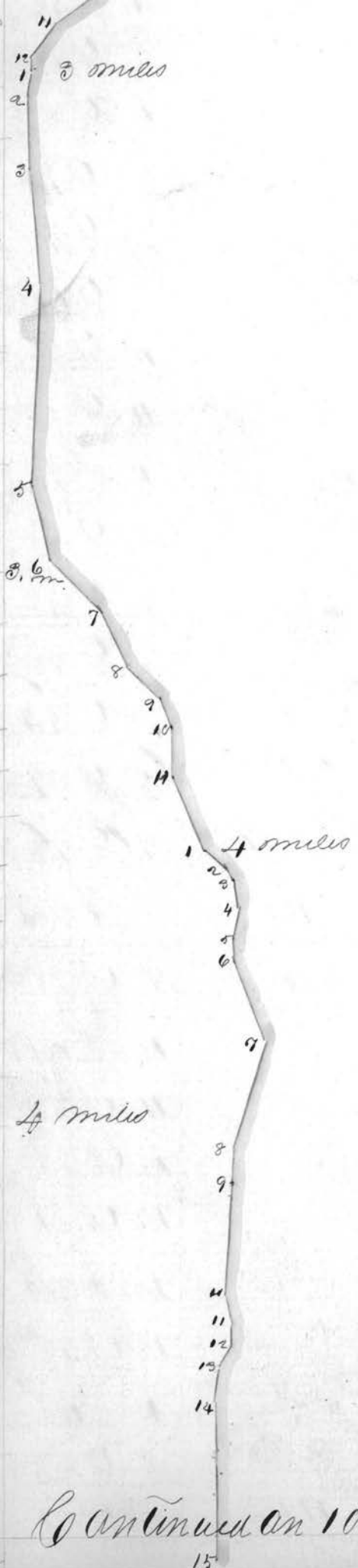
9	S 25 <sup>th</sup> W	30.
10	S 44 <sup>th</sup> E	57.
11	S 24 <sup>th</sup> E	58.
12	S 28 <sup>th</sup> W	8.
13	S 6 <sup>th</sup> W	10.
14	S 5 <sup>th</sup> E	4
1	S 64 <sup>th</sup> E	11
2	S 40 <sup>th</sup> E	6
3	S 28 <sup>th</sup> E	10
4	S 8 <sup>th</sup> E	14
5	S 13 <sup>th</sup> E	8.
6	S 31 <sup>st</sup> E	30.
7	S 3 <sup>rd</sup> W	47.
8	S 7 <sup>th</sup> E	14
9	S 9 <sup>th</sup> E	48.
10	S 27 <sup>th</sup> E	13.
11	S 13 <sup>th</sup> E	7.
12	S 24 <sup>th</sup> W	10.
13	S 5 <sup>th</sup> E	14
14	S 13 <sup>th</sup> E	70.
15	S 29 <sup>th</sup> W	4
16	S 29 <sup>th</sup> E	5
1	S 7 <sup>th</sup> E	20.
2	S 10 <sup>th</sup> E	18.
3	S 3 <sup>rd</sup> E	13
4	S 1 <sup>st</sup> E	10.
5	S 1 <sup>st</sup> W	58.
6	South	108
7	S 64 <sup>th</sup> E	30

6 m.

5 m.

7 m.

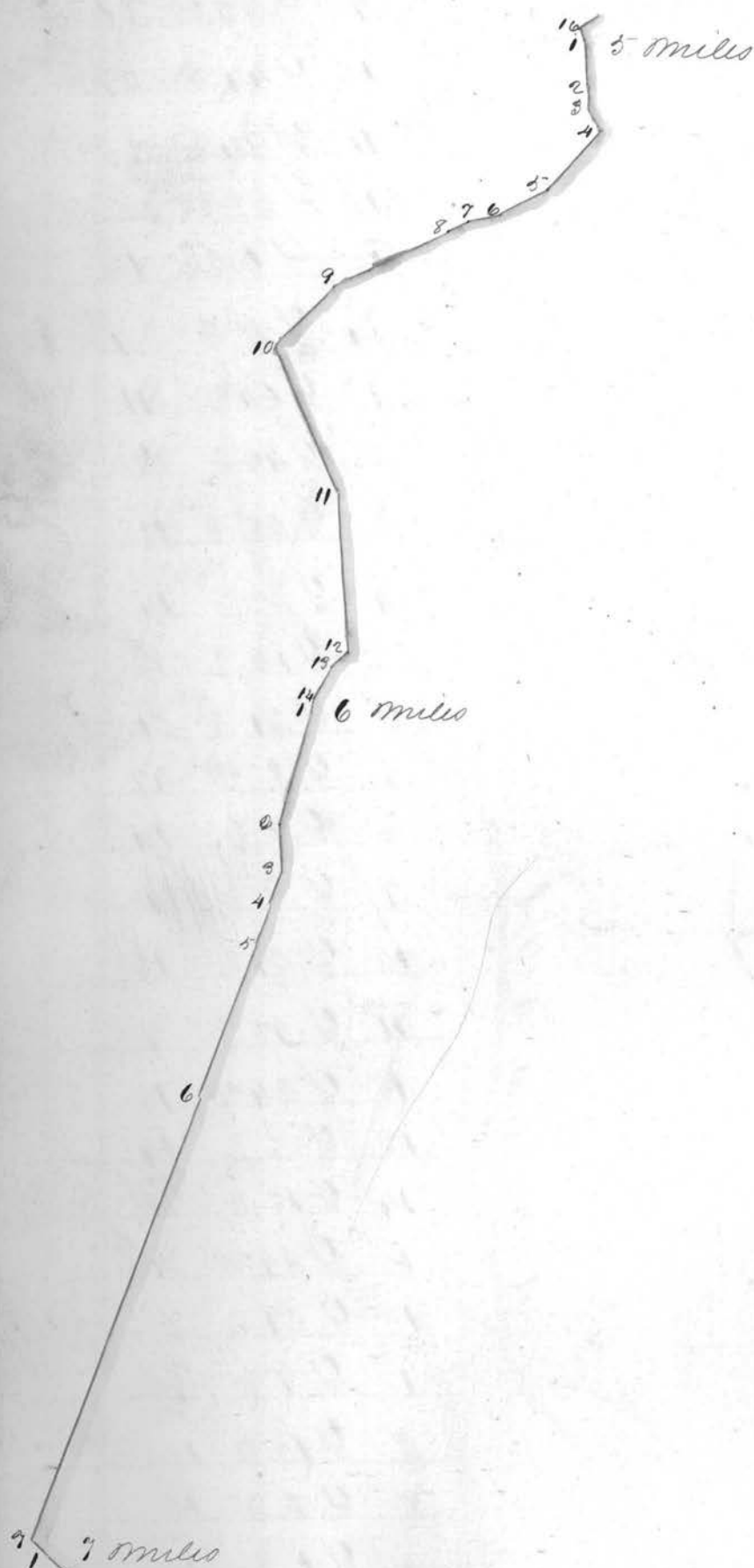
2 9 W 35  
 3 10 W 35  
 4 9 E 32  
 5 8 E 33  
 6 10 E 33  
 7 24 E 35  
 8 5 E 30  
 9 5 1/2 W 11  
 10 20 W 30  
 11 18 W 19  
 12 9 E 30  
 1 9 E 10  
 2 13 E 32  
 3 14 E 27  
 4 10 E 24  
 5 26 E 32  
 6 27 E 18  
 7 20 E 24  
 8 27 E 20  
 9 28 E 15  
 10 15 E 19  
 11 36 E 34  
 1 25 E 16  
 2 16 E 10  
 3 29 E 10  
 4 19 W 26  
 5 21 W 24  
 6 6 W 12  
 7 24 W 8  
 8 23 W 4 1/2



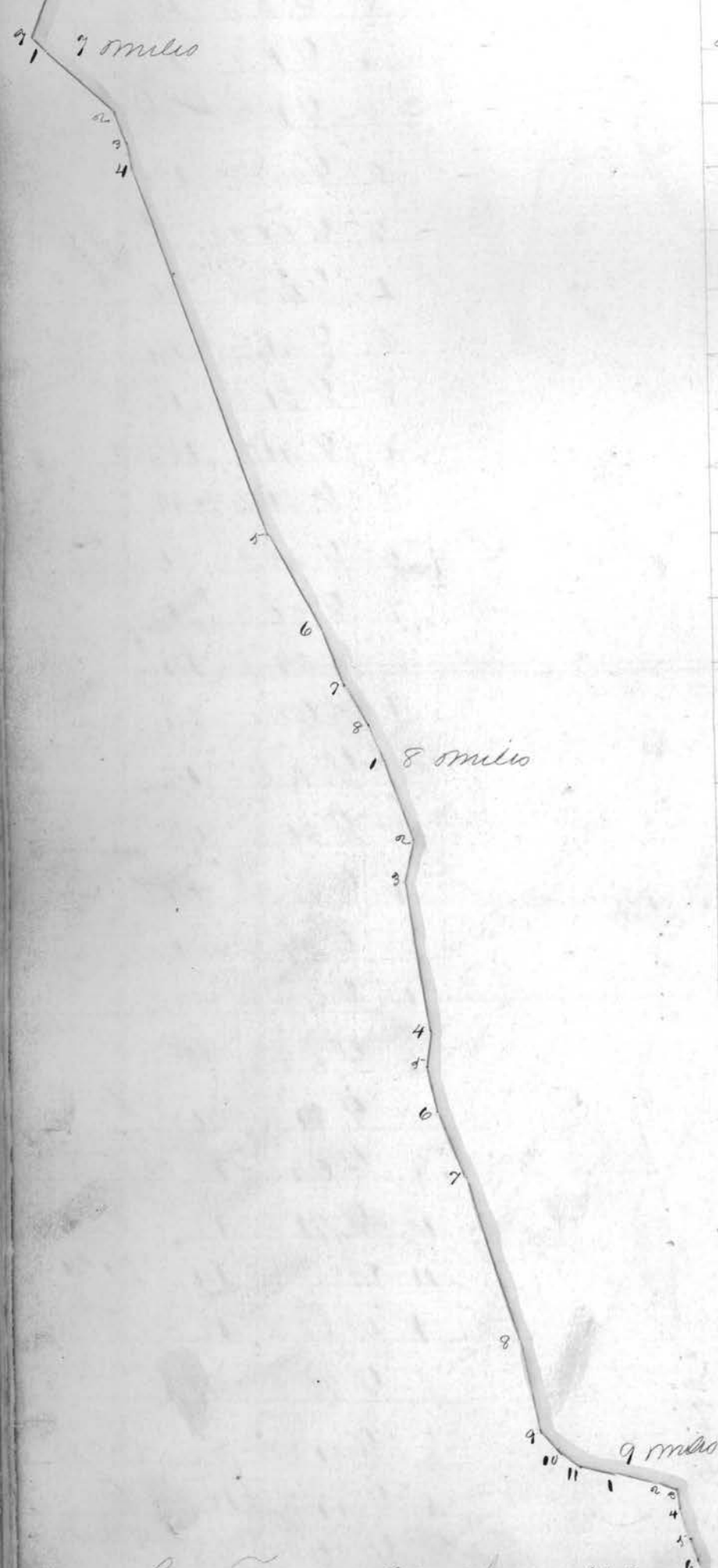
2 1 E 10  
 3 1 W 38  
 6 Youth 108  
 7 4 E 30 7 Mo  
 1 Game 36  
 2 21 E 14  
 3 31 E 10  
 4 21 E 158  
 5 30 E 20  
 6 20 E 30  
 7 30 E 30  
 8 29 E 14 8 Mo  
 1 Game 34  
 2 9 E 16  
 3 30 E 30  
 4 19 E 14  
 5 27 E 20  
 6 28 E 38  
 7 29 E 70  
 8 31 E 36  
 9 24 E 12  
 10 71 E 12  
 11 80 E 14 9 Mo  
 1 38 E 18  
 2 75 E 9  
 3 31 E 8  
 4 44 E 12  
 5 26 E 8  
 6 35 E 16

Continued on 109

Continued from page 108.



7	Y 420	8	
8	Y 600	24	
9	Y 810	6	
10	Y 330	30	
11	Y 580	28.	
12	Y 660	24	
13	Y 630	30.	
14	Y 320	20	
15	Y 100	24	
16	Y 160	29	
17	Y 230	33.	10M
1	Same	33.	
2	Y 90	24	
3	Y 030	38.	
4	Y 430	63	
5	Y 330	24	
6	Y 770	8.	
7	Y 600	10.	
8	Y 370	40	
9.	Y 430	33.	11M
1	Same	13.	
2	Y 320	103.	
3	Y 460	28.	
4	Y 400	26.	



4	Y 40 E	20.	
5	Y 9 E	10.	
6	Y 5 E	20.	
7	Y 10 E	10.	
8	Y 40 E	10.	
9	Y 61 E	05	
10	Y 89 E	00.	
11	Y 85 E	0	10. m.
1	Y 70 E	14	
2	Y 28 E	4	
3	Y 45 E	9	
4	Y 30 E	18	
5	Y 11 E	40.	
6	Y 07 E	00	
7	Y 73 E	8.	
8	East	8.	
9	N 88 E	10.	
10	East	40	
11	N 79 E	14	
12	N 83 E	04.	10. m.
13	N 81 E	50.	
14	East	30.	
15	N 72 E	19	10. m.
1	Same	01	
2	Y 31 E	10	
3	Y 71 E	16	

Continued on page 1105