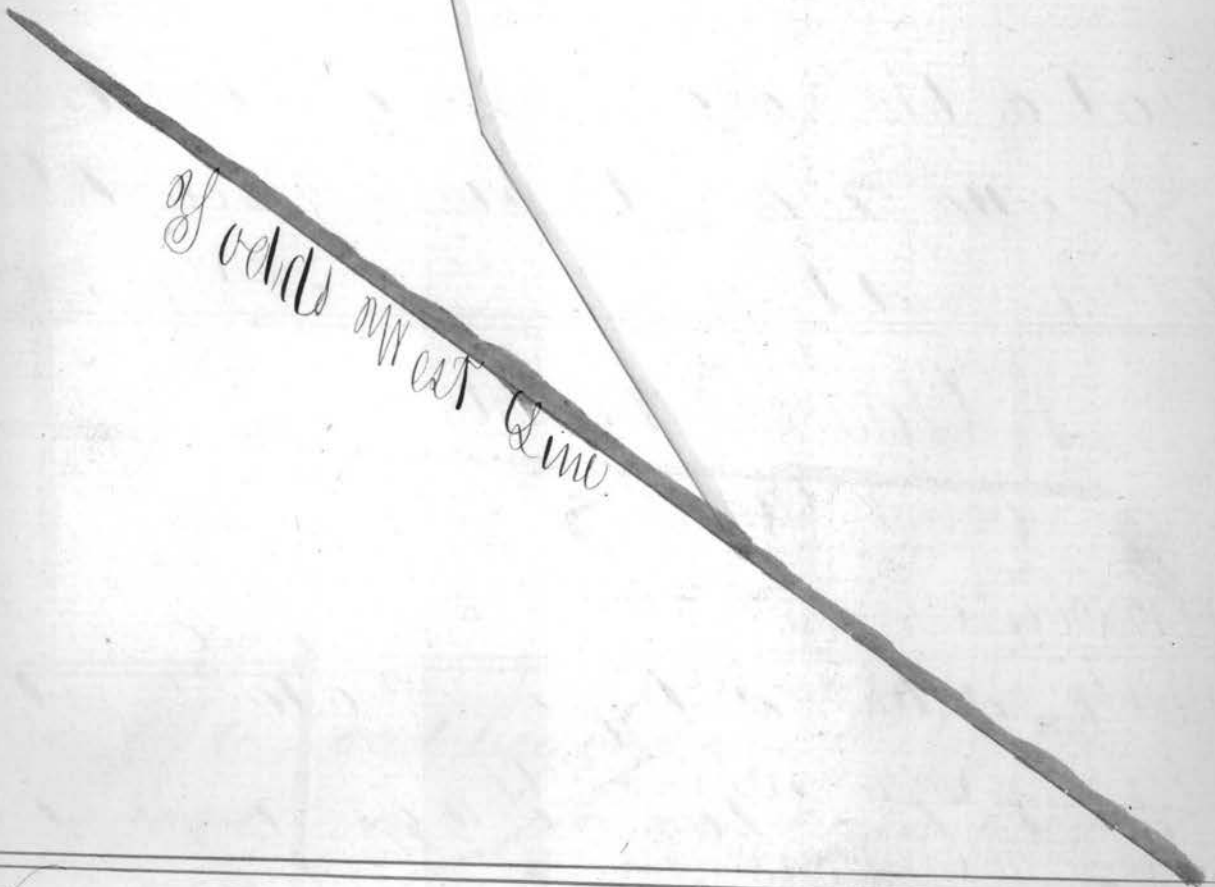


Continued from page 89

90.



That of the road beginning at the E. boundary
of Sect No 3. 8th 7. R. 4. and running thence to
intersect the road from Hancock to the Woods
field road. as surveyed by C. C. Moore A. D. 1834

Road to Woods field

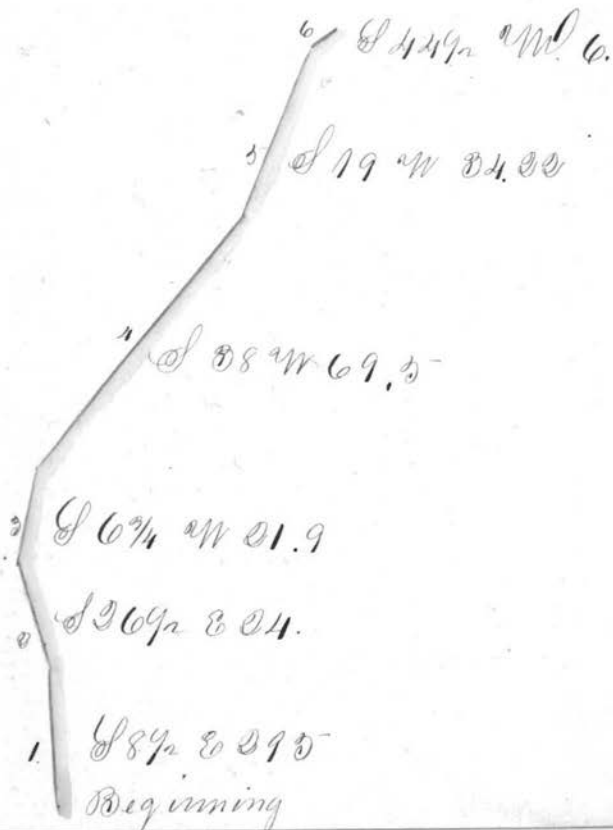
Road from Hancock
Beginning

N 67 1/4 W 133°



N 4 1/4 W, 20

91. Plat of an alteration of the road from
as Surveyed by John
Kernan A.D. 1834.



Plat of the road running from the
Marietta road to the Quincy County line
as Surveyed by A.D. 1835

Guinsey County

County Line

N 17 1/2 W 61.00 N 63 1/4 W 888

N 81 W 26 N 81 1/2 W 25.48

N 61 W 26 N 69 1/2 W 19.00

N 18 W 70 N 80 1/2 W 9.70

N 66 1/2 W 63.36 S 88 W 19.00

N 56 1/2 W 6. S 88 1/2 W 17.00

N 23 W 73.04 N 79 1/2 W 5.30

S 86 W 94.4 West 110.28

S 60 W 70.

and 70 1/2 W 15.10

S 63 W 20.90

S 85 1/2 W 12.76

S 67 1/2 W 19.30

N 80 W 30.28

S 73 1/2 W 14.04

S 88 W 38.

N 54 W 11.00

N 23 1/2 W 23.50

N 59 W 20.04

S 83 W 9.00

S 70 W 5.80

S 29 W 11.48

S 62 1/2 W 5.00

S 70 W 10.26

S 88 1/2 W 15.00

S.M. N 71 1/2 W 11.76

N 58 1/2 W 7.40

Continued on page 90.

McCannels rd

Weather wood

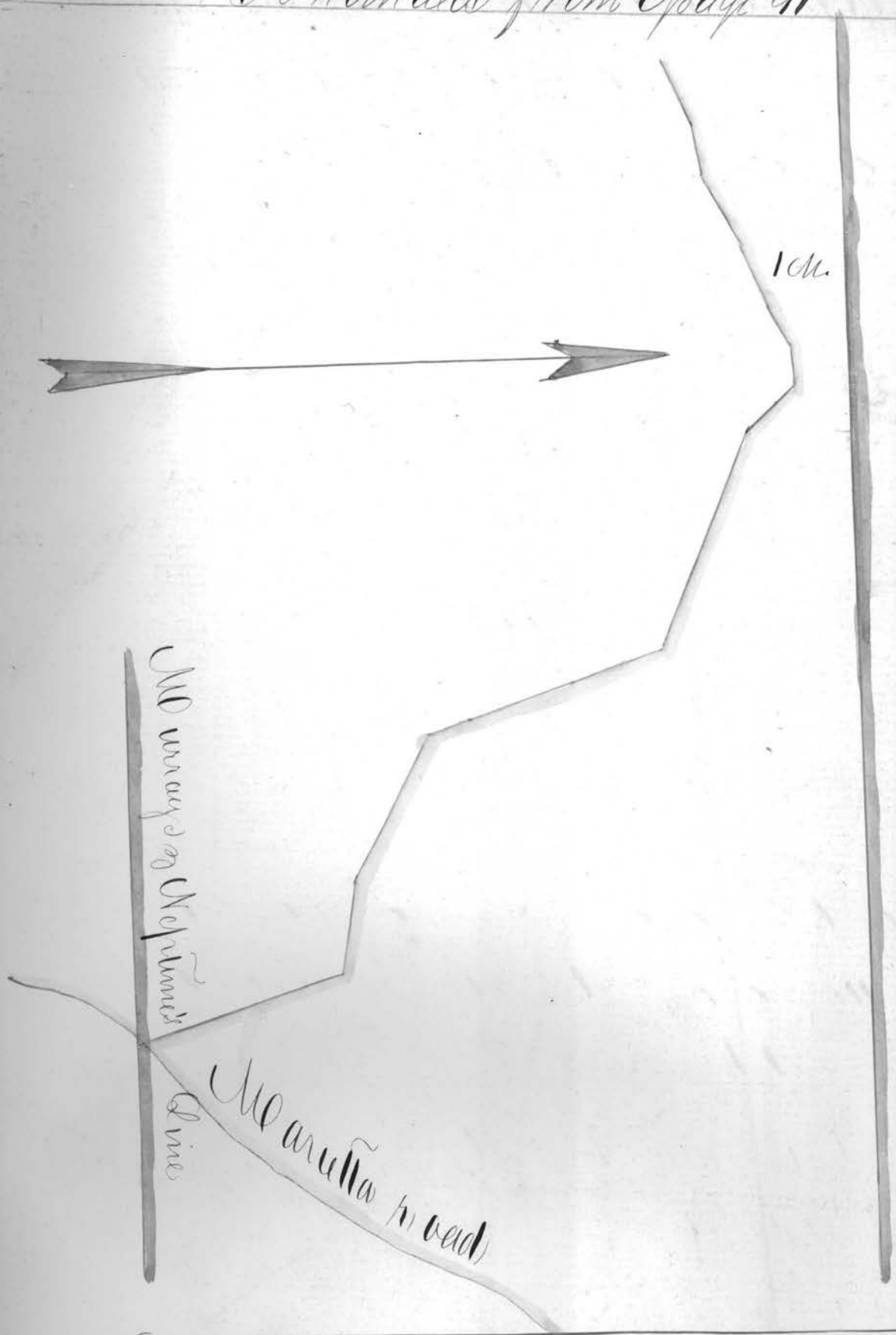
Guinsey County

Woods

Oppovern Boundry

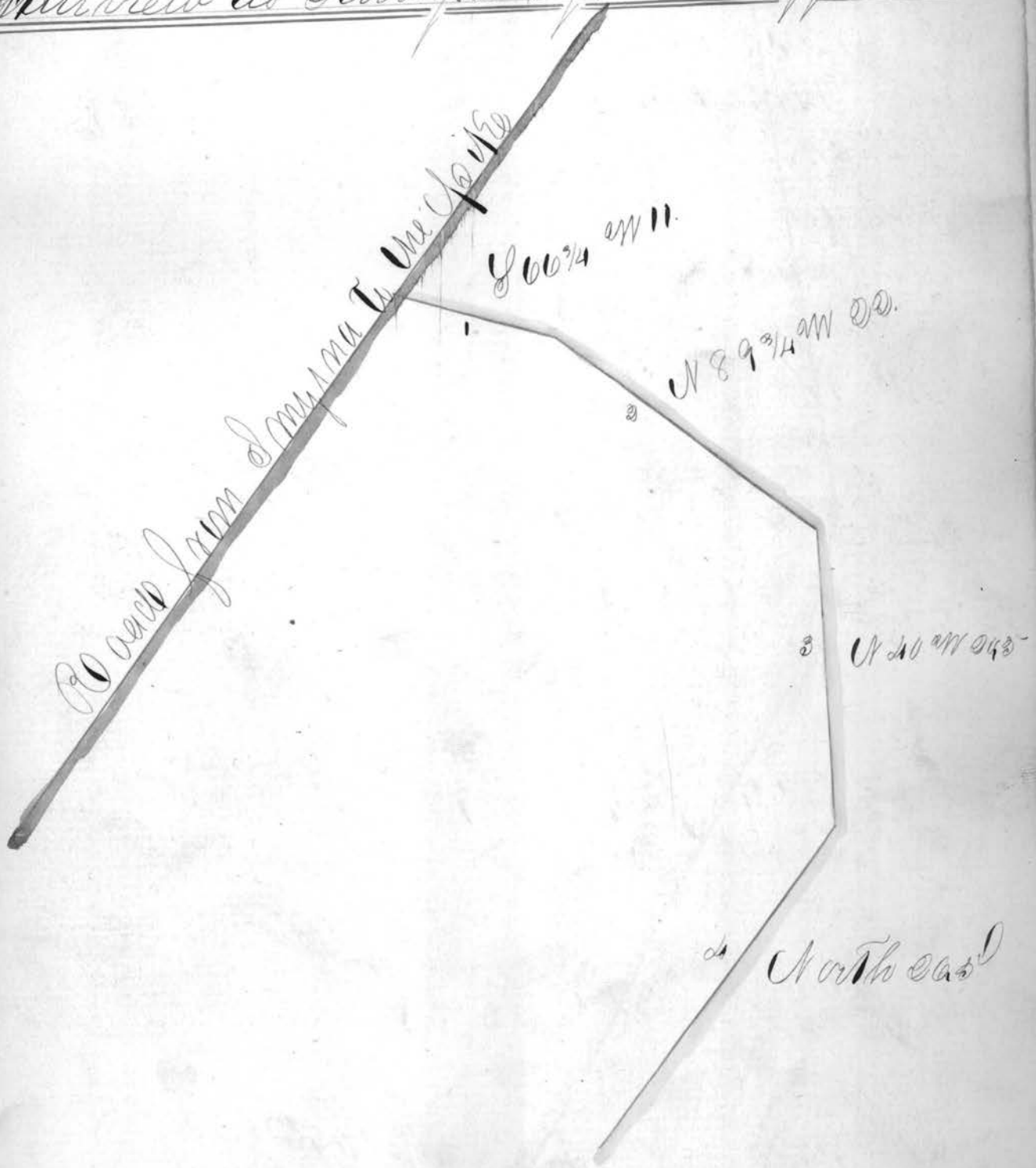
sch.

Guinsey Line



That of a road beginning at The Fair-
 view road, near Carver's house, and in-
 tersecting the road from Stewart's Mill to
 Fairview as surveyed by Col. Briggs 1835^o

intersecting the road from Stevens Mill to
Garrison as surveyed by Col. Briggs 1835^o



Continued on page 98.

5 west 140.

6. $\int 58 \text{ m } 10.$

7. $\int 49 \frac{1}{2} \text{ m } 18.$

8. $\int 53 \text{ m } 10$

9. $\int 41 \frac{1}{2} \text{ m } 10.$

10. $\int 31 \frac{1}{2} \text{ m } 9.$

Continued on page 9d.



17 30.1 NW 10.

18 30.74 NW 14

19 30.42 NW 6.

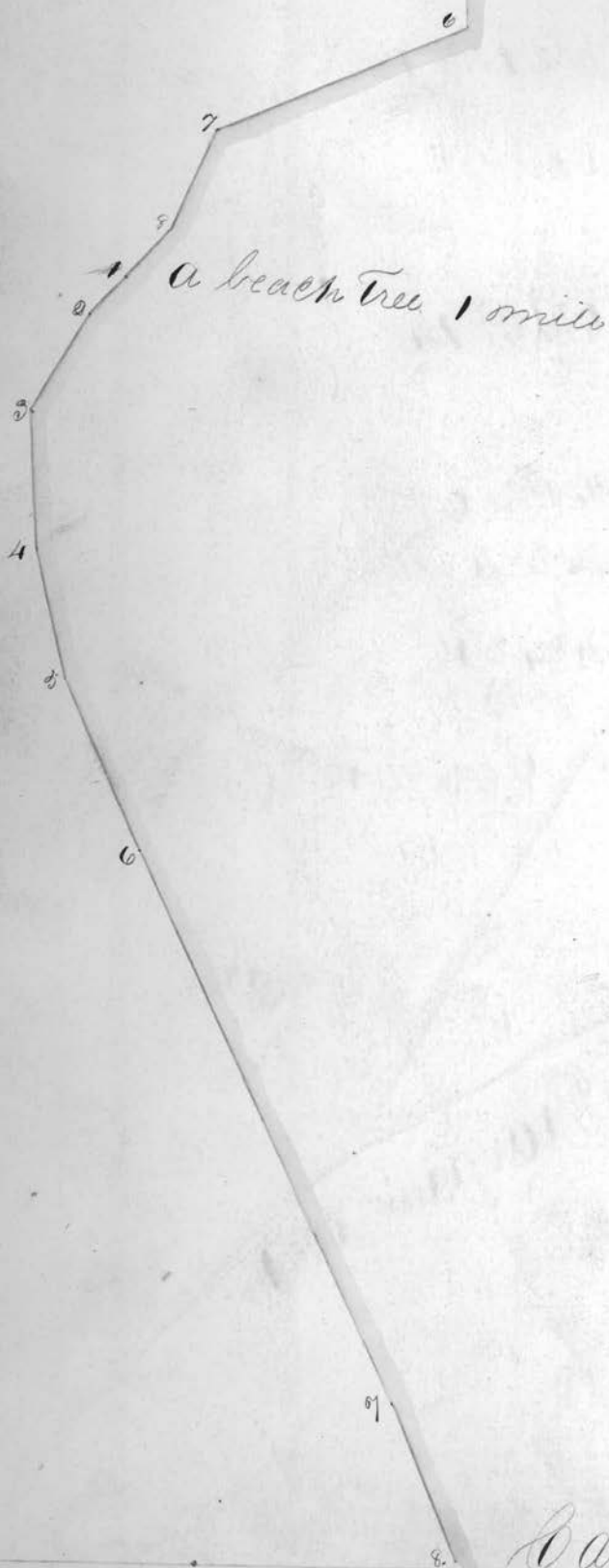
20 31.4 E. 21

21 31.74 E. 10

22 32.40 NW 10.

23 33.00 NW 10.

Blanchard road

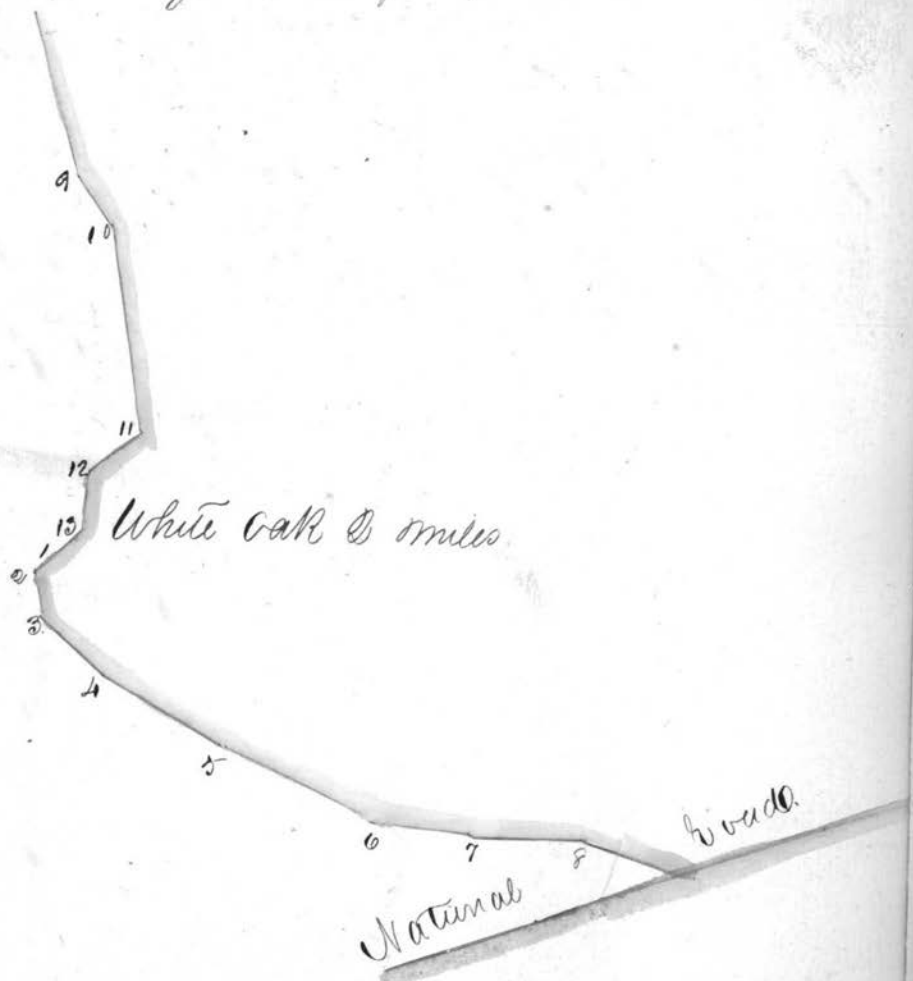


11	S 31 1/2 W	10.4	
12	S 24 1/2 W	7.6	
13.	S 44 1/4 W	7.7	2 M.
		<u>320.</u>	
1	S 44 1/4 W	8.	
2	S 14 8	6.	
3	S 44 1/2 E	18.6	
4	S 60 8	22.8	
5	S 65 1/2 E.	20.8	
6	S 80 1/2 E.	14.6	
7	S 89 8	18.4	
8.	S 69 8	17.6	
		<u>120.5</u>	

Continued on Page 90.

Continued from page 95

96



Plot of an alteration of the road from the
State road near Beechville to St. Clair-
ville road intersecting the St. Clairville near
the School house, through the lands of Bowen and
others, as surveyed by Wm. Chapman, A.D. 1835

State road.

N 0 1/2 E 40.

N 0 3/4 W 18.

N 0 3/4 S 10.

N 0 3/4 S 20.

N 1 1/8 S 20.

N 1 1/2 S 20.

N 40 W 8.

N 5 1/2 S 8.

N 10 S 17.

N 1 3/4 W 14.

N 1 1/2 S 20.

N 2 1/2 W 20.

Continued on page 97.

Continued from page 96

N 104° W 110

N 78° 24

N 54° 30 18

N 3° W 20

N 84° W 38

St. Clairville road

Plat of the road beginning on the flat
 on the Top of the hill above John Horn-
 wrights field on the road from Captains
 Creek to the Monroe County line and
 ends in the road from Dillons run to
 Bealsville on the Lands of Moses Mearns
 as Surveyed by Thomas Lewis A.D. 1835

Road from the mouth of Dillons run to Bealsville

2 Corners to a Sugar tree
 8 20 20

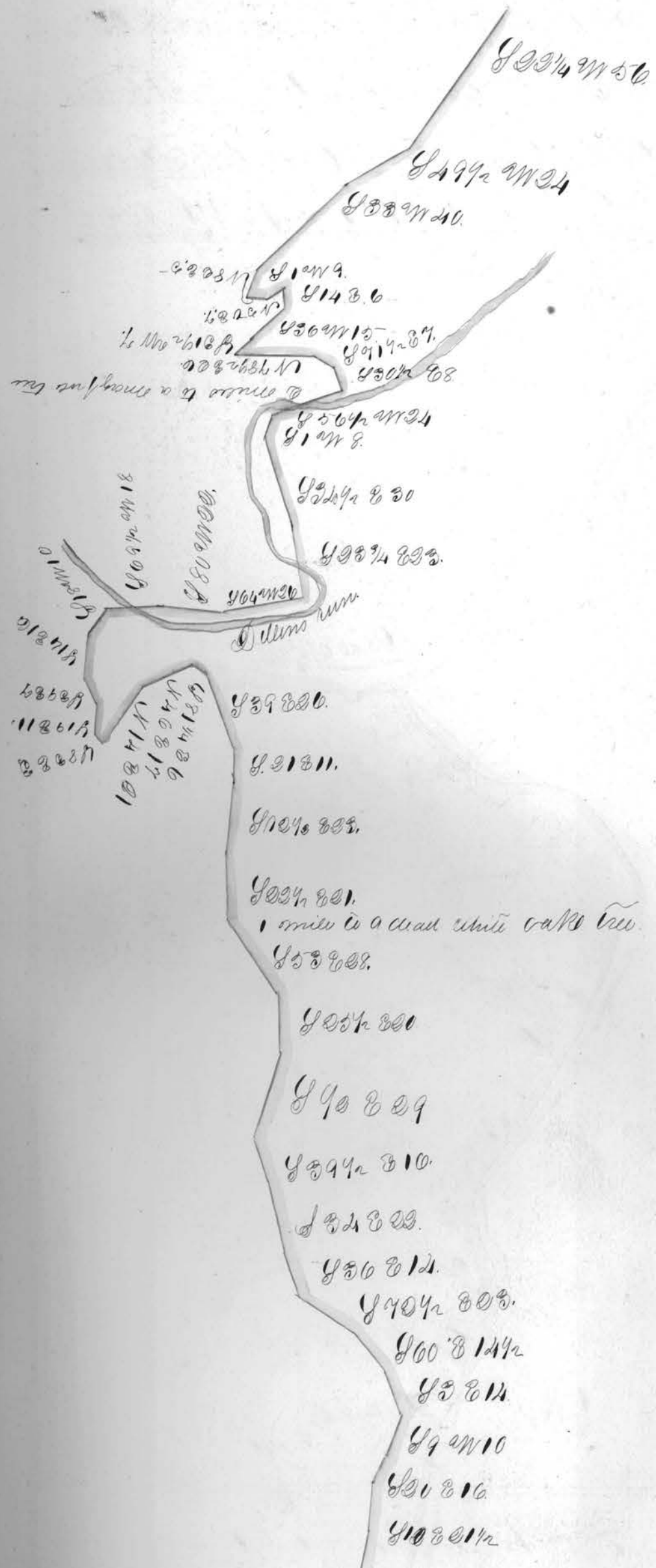
8 20 20

8 20 20

Continued for 98

8 20 20

Continued from page 97



819214.

818220.

888209.

832222 Apolo.

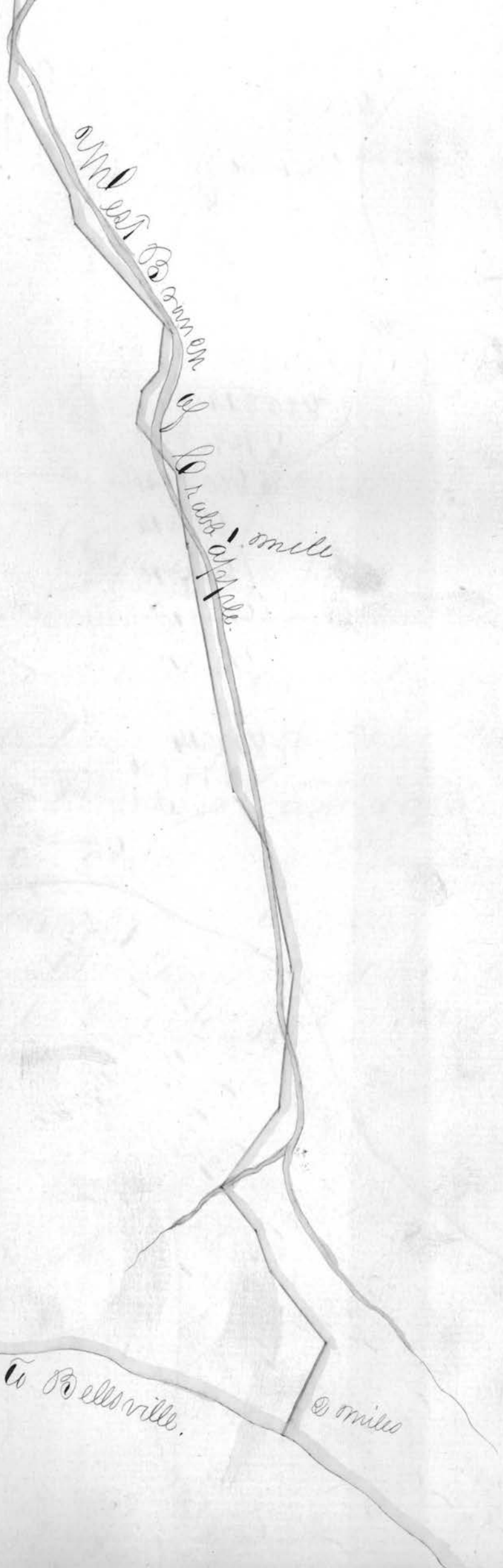
Re card from O. A. ...
to ...
to ...

99. That of the road beginning at a School
 House on Crabapple run running thence
 to the Bellville road a little north of
 the Belmont County Line as survey-
 ed by ~~Wm~~ ^{Wm} Patterson A.D. 1835



No	Course	Dist
1	N 64° W	10.4 poles
2	N 64° W	18.5
3	N 61° W	21.8
4	N 70° W	8.1

4	N 10 W	8.1
5	N 39 W	22.
6	N 58 W	23.6
7	S 76 W	31.6
8	S 13 W	44.5
9	S 56 W	10.7
10	S 29 W	48.
11	S 80 W	16.
12	N 70 W	08
13	S 84 W	72.
14	S 30 W	20.7
15	S 54 W	10.
16	S 63 W	30.
17	S 59 W	70.
18	S 41 W	33.
19	S 58 W	19
20	S 59 W	24.4
21	S 77 W	45.1
22	N 71 W	10.5
23	N 78 W	18.



of ...
 1 mile
 of ...