

Continued from p 39

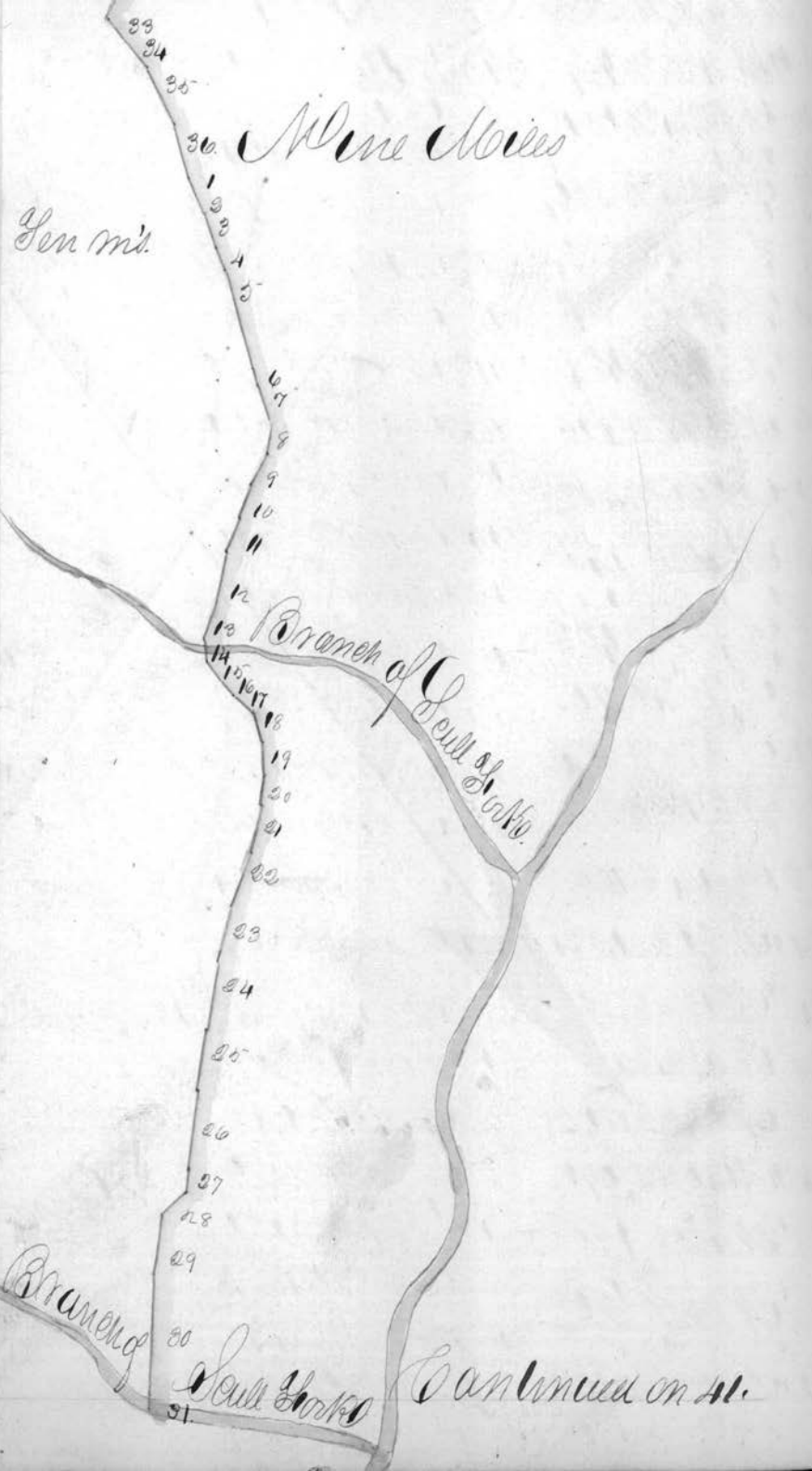
13	U 84 1/4 W 1.85	31	U 17 1/2 E 3.53
14	U 80 W 4.64	32	U 7 1/4 W 3.51
15	U 14 7/4 W 3.85	33	U 7 1/4 W 1.80
16	U 33 W 4.64	34	U 8 1/2 W 1.96
17	U 15 W 2.89	35	U 6 1/2 W 3.02
18	U 43 W 8.13	36	U 5 1/2 W 4.79
19	U 74 7/4 W 7.10	1	Same 1.26
20	U 88 7/4 W 1.30	2	U 6 1/2 W 3.25
21	U 6 1/2 W 1.93	3	U 6 1/4 W 1.94
22	U 6 1/2 W 5.33	4	U 5 8/4 W 1.35
23	U 15 W 4.03	5	U 5 1/4 W 5.80
24	U 8 1/4 W 1.16	6	U 6 1/4 W 1.13
25	U 8 1/4 W 4.14	7	U 5 7/4 W 3.27
26	U 6 9 W 5.27	8	U 3 1/4 W 1.63
27	U 7 5/4 W 1.23	9	U 13 W 1.76
28	U 7 3/4 W 1.79	10	U 10 W 2.03
29	U 88 1/4 W 2.19	11	U 19 1/4 W 1.79
30	U 6 7/4 W 4.54	12	U 3 0 W 3.17
31	U 3 8 W 7.13	13	U 15 1/2 W 1.91
32	U 3 7/4 W 4.37	14	U 3 9 W 1.18
33	Same 2.94	15	U 7 6 1/2 W 1.44
34	Same 3.56	16	U 8 6 W .99
35	U 18 W 3.23	17	U 7 9 W 1.59
36	U 7 2 E 4.03	18	U 17 1/4 W 2.00
37	U 15 E 2.84	19	U 14 1/4 W 1.90
38	U 15 1/4 E 1.79	20	U 2 6 W 1.56
39	U 23 E 1.97	21	U 3 7 1/4 W 2.67
40	U 16 1/4 E 1.66	22	U 19 1/4 W 3.34
41	U 2 E 2.03	23	U 2 6 1/2 W 3.14
42	U 24 1/4 W 2.15	24	U 2 9 1/4 W 3.79
43	U 3 1/4 W 1.15	25	U 2 8 W 3.52
44	Same 3.70	26	U 3 4 W 4.27
45	U 2 9 1/4 W 1.94	27	U 2 7 1/2 W 1.38
46	U 2 1/4 E 2.64	28	U 3 1/2 E 1.97
47	U 17 1/2 W 2.10	29	U 2 5 W 3.04
48	U 3 3 1/4 W 2.90	30	U 3 6 1/4 W 1.5

Nine miles



Eight Miles

1	N 87 1/4 W 2.74	Same	2.00	
2	N 81 W 2.26	31	N 82 1/2 W 2.67	
3	N 107 1/4 W 2.57	32	N 83 1/2 W 2.50	
4	N 83 W 2.	33	N 77 1/2 W 1.89	
5	N 43 1/4 W 1.74	1	Same	1.53
6	N 60 W 3.41	2	N 53 1/4 W 2.64	
7	N 53 W 1.97	3	N 62 W 1.10	
8	N 49 W 1.79	4	N 54 W 5.80	
9	N 37 1/4 W 1.33	5	N 10 W 4.80	
10	N 31 W 1.97	6	N 10 W 2.29	
11	N 29 1/4 W 1.13	7	N 10 W 1.84	
12	Same	8	N 18 W 3.50	
13	N 63 1/4 W .90	9	N 7 1/4 E 3.58	
14	N 69 1/2 W 1.19	10	N 9 1/2 W 2.20	
15	N 19 1/4 W 0.94	11	N 8 W 2.90	
16	N 15 1/4 W 1.29	12	N 6 E .98	
17	N 56 W 1.20	13	N 14 1/4 E 5.28	
18	N 70 1/4 W 1.12	14	N 20 1/4 E 1.69	
19	N 80 1/4 W 1.81	15	N 19 1/4 E 1.00	
20	N 75 1/4 W 1.97	16	N 8 1/4 E 2.13	
21	N 31 1/4 W 2.04	17	N 9 W 2.62	
22	N 53 W 3.48	18	N 27 W 5.00	
23	N 40 1/4 W 5.12	19	N 71 W 2.10	
24	N 25 1/4 W 1.28	20	N 6 W 2.09	
25	N 1/2 E 2.34	21	N 13 W 1.75	
26	N 3 E 1.20	22	N 7 1/2 W 3.10	



Continued from p 40

23 N 35 1/4 W 2.18 10 S 69 1/2 W 1.17

24 N 37 1/4 W 1.87 11 N 80 1/4 W 1.01

25 N 1/2 E 8.45 12 N 62 1/4 W .96

26 N 15 W 2.06 13 N 65 1/2 W .88

27 N 10 1/4 E 5.28 14 N 48 1/4 W 1.14

28 N 9 1/2 E 1.38 15 N 26 1/4 W 2.05

29 N 12 E 7.74, 10 16 N 19 W 1.21

1 Same 2.56 17 N 36 1/4 W .66

2 N 6 1/2 E 4.06 18 N 77 1/4 W .86

3 N 1/2 E 11.06 19 N 66 1/4 W .93

4 N 7 1/4 W 1.83 20 N 54 1/4 W .86

5 N 13 1/4 W 1.30 21 N 57 1/4 W 1.01

6 N 33 1/4 W 5.87 22 N 43 1/4 W 1.03

7 N 11 1/4 W 3.03 23 N 20 1/4 W .95

8 N 33 1/2 W 5.30 24 N 19 1/2 W 1.71

Same 0.96 24 N 12 1/4 W 1.07

9 N 48 1/4 W 3.84 25 N 13 W 0.53

10 N 36 W 1.16 26 N 17 1/4 W 1.53

11 N 17 W 5.89 27 N 13 1/4 W 1.44

12 N 24 1/2 W 1.39 28 N 5 1/4 W 1.94

13 N 11 1/2 E 1.98 29 N 5 1/4 W 1.94

14 N 18 1/4 E 2.34 30 N 21 1/4 W 2.03

15 N 11 W 1.98 31 N 11 1/2 W 1.37

16 N 14 W 3.73 32 N 2 E .99

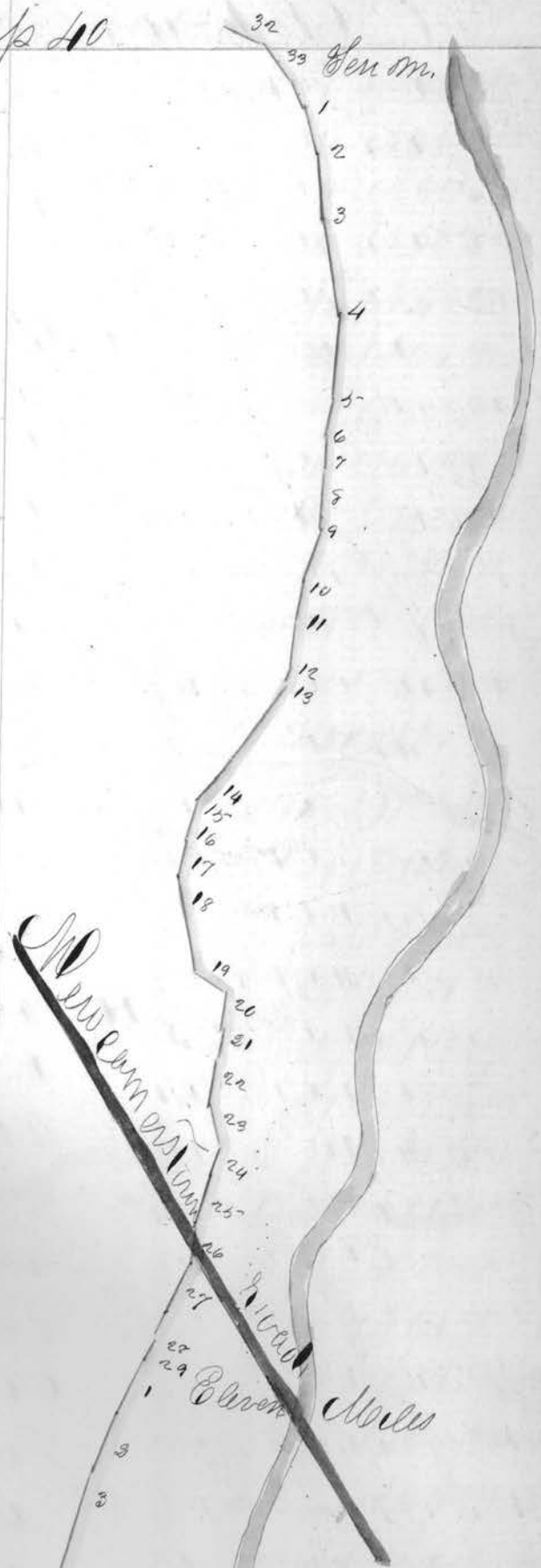
17 N 33 1/4 W 2.46 33 N 39 1/2 W .48

18 N 27 1/2 W 2.93 34 N 10 1/4 W 1.64

19 N 28 W 2.16 (13) 35 N 33 1/2 W 1.04

1 Same 15.19 36 N 10 1/4 E 1.03

2 N 25 1/4 W 2.10 37 N 34 E 1.08



3	N 5 3/4 W	1.84	38	N 19 W	1.15
4	N 9/4 E	1.41	39	N 29 W	1.33
5	N 18 1/4 W	1.89	40	N 55 W	0.74
6	N 19 3/4 W	5.05	41	N 40 W	0.77
7	N 53 1/4 W	2.07	42	N 44 1/2 W	2.37
8	N 20 1/2 W	1.63	43	N 42 3/4 W	2.79
9	N 14 3/4 W	1.28	1	Same	.28
10	N 24 1/2 E	1.37	2	N 31 1/4 W	2.35
11	N 24 3/4 W	2.05	3	N 21 1/4 W	1.91
12	N 20 3/4 W	2.80	4	N 20 1/4 W	1.85
13	N 6 1/2 W	1.67	5	N 16 1/2 W	2.12
14	N 22 3/4 E	1.83	6	N 18 W	2.25
15	N 19 E	2.37	7	N 21 W	2.19
16	N 7 1/2 W	2.36	8	N 22 1/2 W	2.50
17	N 26 1/4 W	2.01	9	N 18 1/4 W	2.97
18	N 43 1/2 W	2.13	10	N 30 W	2.05
19	N 44 1/4 W	1.47	11	N 35 W	2.80
20	N 21 1/4 W	2.12	12	N 43 3/4 W	2.61
21	N 10 1/4 W	2.00	13	N 60 1/4 W	2.45
22	N 13 1/2 W	2.07	14	N 20 1/4 W	2.11
23	N 11 W	1.97	15	N 43 1/4 W	2.14
24	N 15 3/4 W	1.80	16	N 30 1/2 W	2.35
25	N 10 1/4 W	2.38	17	N 20 W	2.67
26	N 3 3/4 W	2.13	18	N 49 3/4 W	1.78
27	N 6 1/2 E	2.87	19	N 31 W	2.66
28	N 24 3/4 E	2.70	20	N 53 1/4 W	5.94
29	N 5 1/2 E	2.94	21	N 48 1/4 W	3.09
1	Same	2.73	22	N 51 3/4 W	2.83
2	N 3 1/4 W	2.33	1	Same	2.06
3	N 1 3/4 W	1.97	2	N 87 W	0.42
4	N 14 1/2 W	2.20	3	N 89 1/2 W	2.80
5	N 50 1/4 W	1.75	4	West	2.01
6	N 52 3/4 W	1.88	5	N 88 W	1.59
7	N 60 W	2.77	6	N 76 1/2 W	2.48
8	N 60 1/2 W	2.04	7	N 73 1/4 W	2.33
9	N 83 1/2 W	1.18	8	N 56 1/4 W	2.94

14



Sweet Water

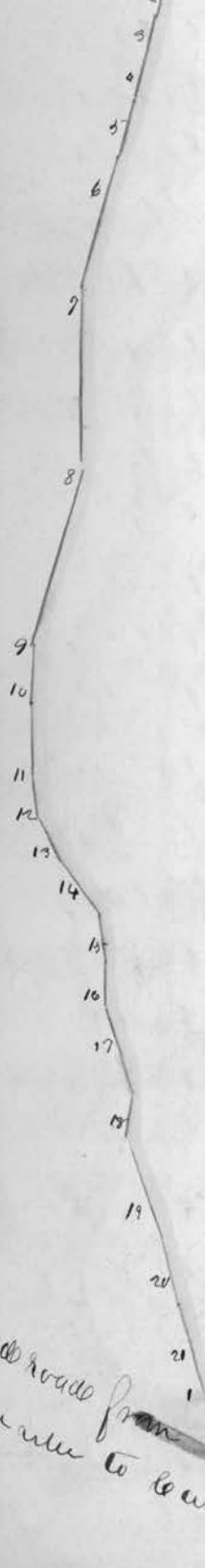
15.7 miles

Continued on 42.

Continued from Page 117



9	N 61° W	2.04	37	N 53° W	1.01
10	S 81° W	2.56	38	N 89 1/2° W	1.29
11	S 69° W	.89	1	N 61 1/2° W	2.22
12	N 76° W	1.84	3	N 49 1/2° W	2.64
13	N 61 1/4° W	10.88	2	N 35° W	3.53
14	N 74 1/2° W	3.93	4	N 31 1/2° W	1.63
15	N 58° W	2.13	5	N 19° W	1.40
16	N 11 1/2° W	3.93	6	N 61° W	1.03
17	N 53 1/2° W	1.89	7	N 83 3/4° W	1.96
18	N 89 1/4° W	1.55	8	S 84 1/2° W	1.85
19	N 88 1/2° W	1.83	9	N 66 1/4° W	.64
20	N 70 1/2° W	1.53	10	N 72° W	1.41
21	N 68 1/2° W	1.23	11	N 53° W	2.71
22	N 53 1/2° W	1.07	12	N 43° W	4.23
23	N 63 3/4° W	.72	13	N 18 1/2° W	7.90
24	N 87 3/4° W	1.26	14	N 25 3/4° W	4.90
1	Same	.28	15	N 16° W	1.00
2	N 72 1/2° W	1.72	16	N 7 1/4° W	2.45
3	S 50 1/4° W	1.71	17	N 27° W	1.45
4	S 66° W	1.19	18	N 55 3/4° W	1.58
5	S 79 1/4° W	.94	19	N 53 1/2° W	1.12
6	N 88° W	.87	20	N 23 1/2° W	1.78
7	N 72 1/2° W	1.07	21	N 63° W	1.65
8	N 50 1/4° W	1.20	22	N 78° W	1.04
9	N 18 1/4° W	1.02	23	N 66° W	1.20
10	N 31 1/4° W	1.32	24	N 50° W	1.61
11	N 20° W	1.25	25	N 26 3/4° W	1.27
12	N 30° W	1.47	26	N 6 3/4° W	1.19
13	N 21 1/2° W	2.03	27	N 27° W	.79
14	N 16 3/4° W	1.47	28	N 29 1/2° W	1.39
15	N 13 1/4° W	5.56	29	N 17 1/2° W	2.27
16	N 23 3/4° W	1.00	30	N 29 1/4° W	1.50
	Same	6.88	31	N 13 3/4° W	1.44



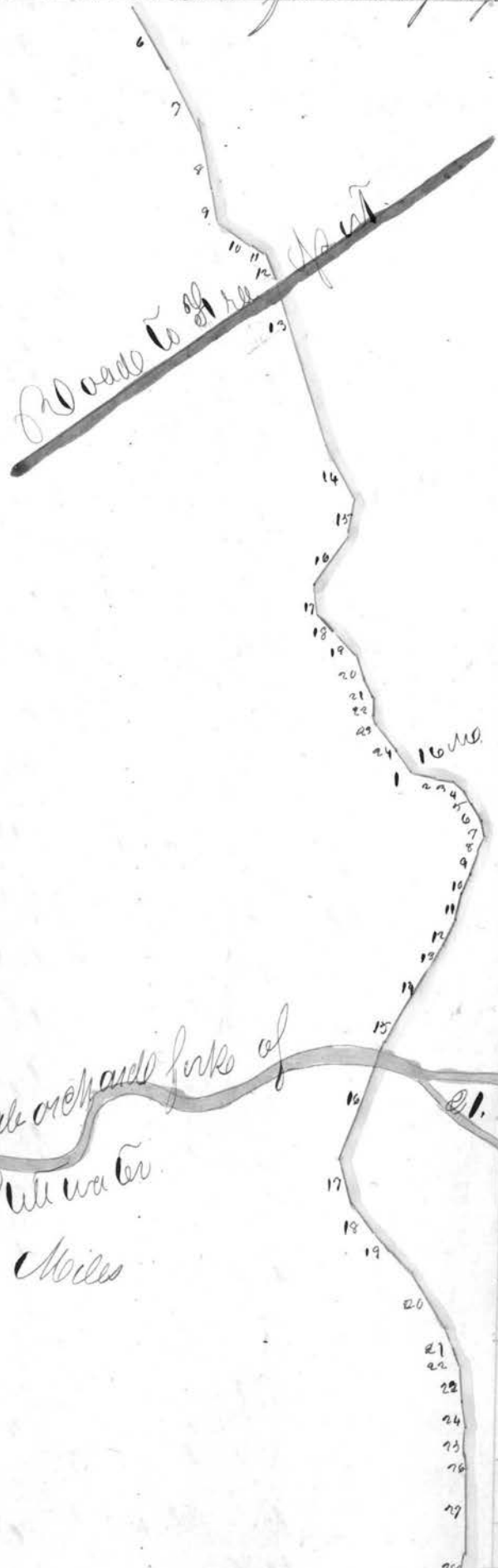
Graded road from
Stummville to Cummings

Continued on p. 44

14	At 10 3/4 AM	1.47	28	At 29 1/2 AM	1.89
15	At 18 1/4 AM	5.56	29	At 17 1/2 AM	2.27
16	At 25 3/4 AM	0.00	30	At 29 1/4 AM	1.50
	Same.	0.88	31	At 13 3/4 AM	1.04
17	At 66 AM	2.88	32	At 4 1/4 AM	1.75
18	At 88 3/4 AM	2.88	33	At 12 1/2 AM	1.48
19	At 86 3/4 AM	3.16	34	At 25 1/2 AM	1.50
20	At 78 3/4 AM	4.36		Same.	1.10
21	At 70 1/4 AM	1.88	35	At 9 1/2 AM	1.74
22	At 55 3/4 AM	1.70	36	At 70 1/2 AM	1.12
23	At 46 1/2 AM	2.16	37	At 6 3 AM	1.
24	At 61 3/4 AM	2.01	38	At 65 3/4 AM	1.74
25	At 40 AM	1.47	39	At 78 1/2 AM	2.50
26	At 43 3/4 AM	1.06	40	At 89 3/4 AM	2.53
27	At 49 1/2 AM	5.28	41	At 80 AM	1.05 18mm
28	At 36 3/4 AM	1.35	1	Same.	5.33
29	At 11 AM	2.10	2	At 70 1/2 AM	3.
30	At 72 AM	1.82	3	At 88 AM	3.74
31	At 66 1/2 AM	2.55	4	At 85 AM	2.88
32	At 15 1/2 AM	1.92	5	At 64 3/4 AM	3.20
33	At 37 AM	2.05	6	At 88 1/2 AM	1.39
34	At 26 1/4 AM	2.04	7	At 80 3/4 AM	1.39
35	At 27 1/2 AM	1.39	8	At 53 1/4 AM	2.31
36	At 57 1/4 AM	1.41	9	At 59 1/4 AM	2.70

Continued from page 13

10	N 57 1/4 W	5.09
11	N 53 1/2 W	3.27
12	S 86 W	3.13
13	N 66 3/4 W	2.80
14	N 66 1/2 W	.81
15	N 80 W	1.56
16	N 54 3/4 W	2.80
17	N 60 W	1.93
18	Same	1.05
18	N 38 3/4 W	1.06
19	N 33 1/2 W	.89
20	N 36 3/4 W	1.
21	N 35 1/4 W	1.53
22	N 38 1/2 W	2.99
23	N 34 1/2 W	2.95
24	N 48 3/4 W	2.83
25	N 38 1/2 W	1.03
26	N 33 3/4 W	3.81
27	N 59 W	1.45
28	N 27 3/4 W	2.
29	N 34 3/4 W	2.18
30	Same	1.37
30	N 42 1/2 W	1.00
31	N 38 W	1.40
32	N 35 W	1.06
33	N 48 3/4 W	1.27
34	Same	.80
35	N 61 W	1.91
36	N 50 W	2.00
37	N 33 3/4 W	2.39
38	N 49 W	2.21



9	N 73 3/4 W	2.12
10	N 68 W	2.07
11	N 60 1/2 W	1.95
12	N 50 3/4 W	2.20
13	N 48 W	2.30
14	N 69 W	2.28
15	N 63 3/4 W	2.84
16	N 68 W	1.40
17	S 88 3/4 W	1.06
18	N 73 1/4 W	1.05
19	N 90 3/4 W	2.73
20	N 35 1/2 W	2.13
21	N 17 1/4 W	2.24
22	N 13 3/4 W	2.40
23	N 10 3/4 W	1.55
24	N 29 3/4 W	1.05
25	N 18 1/4 W	2.47
26	N 19 3/4 W	2.28
27	N 29 3/4 W	2.76
28	N 33 1/4 W	1.63
29	N 31 3/4 W	3.90
1	Same	2.1
2	N 61 W	1.27
3	S 89 W	1.00
4	S 85 1/2 W	1.00
5	S 69 W	2.00
6	N 56 W	2.71
7	N 33 1/2 W	2.00
8	N 62 3/4 W	2.50

Oral ... forks of ... water
19 Miles

6	U 11 1/4 W	2.95
	Same	10.76
7	U 11 5/4 W	3.97
8	U 10 1/2 W	4.65
9	U 10 1/4 W	6.89
10	U 10 3/4 W	5.35
11	U 11 3/4 W	2.85
12	U 10 5 W	2.09
13	U 11 1/4 W	3.14
14	U 10 3/4 W	3.68
15	U 11 1/4 W	1.87
16	U 10 3/4 W	1.28
17	U 10 1/2 W	2.53
18	U 10 1 W	2.29
19	U 10 1/4 W	1.78
20	U 10 3/4 W	1.61
21	U 10 1/4 W	3.8
22	U 10 1/2 W	2.68
23	U 10 3/4 W	1.38
24	U 10 1/4 W	1.93
25	U 10 6 W	1.27
26	U 10 1/2 W	2.13
27	U 10 8	2.24
1	Same	1.14
2	U 10 6 1/4 W	3.19
3	U 10 5 1/4 W	3.07
4	U 10 6 3/4 W	1.91
5	U 10 8 W	2.46
6	U 10 6 3/4 W	3.04
7	U 10 6 W	3.50
8	U 10 9 1/2 W	1.20
	Same	1.43

9	U 10 9 1/4 W	2.50
10	U 10 3/4 W	1.79
11	U 10 3/4 W	4.92
12	U 10 1/4 W	1.80
13	U 10 1/4 W	3.21
14	U 10 3/4 W	1.08
15	Same	1.47
16	U 10 9 1/4 W	1.28
17	U 10 5 3/4 W	1.62
18	U 10 5 3/4 W	3.09
19	U 10 6 3/4 W	1.80
20	U 10 9 1/4 W	2.68
21	U 10 5 1/2 W	1.71
22	U 10 5 1/4 W	1.98
23	U 10 6 1/2 W	1.50
24	U 10 1/4 W	1.43
25	U 10 6 1/4 W	1.46
26	U 10 3/4 W	1.84
27	U 10 3/4 W	2.03
28	U 10 4 1/2 W	2.19
29	U 10 2 1/4 W	1.73
30	U 10 8 W	1.55
31	U 10 6 W	1.40
32	U 10 3 3/4 W	1.08
33	U 10 6 1/4 W	1.38
34	U 10 6 W	1.47
35	U 10 3 3/4 W	11.31
1	Same	.88
2	U 10 1/4 W	6.35
3	U 10 6 1/4 W	20.58
4	U 10 9 1/2 W	10.24



20 miles

Continued from page 44

5	N 82 1/4 W	2.79
6	S 89 1/4 W	6.70
7	S 79 1/2 W	6.63
8	S 65 W	4.09
9	S 63 1/4 W	6.15
10	S 77 W	4.95
11	S 83 1/4 W	2.18
12	N 88 1/4 W	2.16
13	Same	1.00
14	S 88 W	4.39
15	N 60 3/4 W	8.33
16	N 87 3/4 W	5.10
17	N 66 3/4 W	6.10
18	N 40 1/4 W	1.56
19	N 29 1/2 W	2.
20	N 87 1/2 W	3.90
21	N 40 1/4 W	1.58
22	N 34 1/4 W	1.40
23	N 37 E	1.46
24	N 8 1/4 E	1.64
25	N 57 W	3.34
26	N 23 1/4 W	1.37
27	N 4 W	1.10
28	N 44 W	3.33

Trunk of Sugar Tree
Stump



1	Same	1.43
2	N 29 1/2 W	1.76
3	Same	2.04
4	N 19 1/4 W	2.17
5	N 25 W	1.96
6	N 41 1/4 W	2.70
7	N 37 1/4 W	4.24
8	N 39 1/2 W	3.54
9	N 38 1/2 W	2.53
10	N 20 W	1.55
11	N 13 1/2 W	2.40
12	N 10 3/4 W	1.80
13	N 13 1/2 W	2.03
14	N 9 1/4 W	2.11
15	N 14 3/4 W	2.31
16	N 32 1/4 W	2.04
17	N 26 1/4 W	1.83
18	N 48 1/2 W	1.05
19	N 31 W	1.31
20	N 26 1/4 W	2.80
21	N 31 1/4 W	1.86
22	N 77 1/2 W	3.86
23	N 67 1/2 W	5.70
24	N 78 W	1.14
25	N 45 1/4 W	3.25

19.0m.

- 17 N 80 1/2 W 2.11
- 18 N 88 W 3.28
- 19 N 94 W 5.00
- 20 N 14 1/2 W 1.69
- 21 N 9 1/2 W 1.91
- 22 N 24 1/4 W 1.56
- 23 N 89 1/4 W 2.17
- 24 N 79 1/4 W 2.35
- 25 N 67 1/4 W 2.05
- 26 N 68 W 2.86
- 27 N 87 1/4 W 2.03
- 28 N 84 W 3.36
- 29 N 89 1/2 W 1.53
- 1 N 68 1/4 W 3.77
- 2 N 68 W 3.04
- 3 N 60 1/4 W 3.66
- 4 N 60 W 3.15
- 5 N 52 1/2 W 4.33
- 6 N 72 1/4 W 3.95
- 7 N 60 1/4 W 3.01
- 8 N 61 W 1.86
- 9 N 45 1/2 W 4.14
- 10 N 53 1/2 W 3.
- 11 N 14 W 9.02
- 12 N 89 W 5.75
- 13 N 24 1/4 W 3.48
- 14 N 21 1/4 W 7.11
- 15 N 5 1/2 W 3.53
- 16 N 10 1/2 W 3.57
- 17 N 50 1/4 W 8.80
- 18 N 33 1/4 W 8.92
- 19 N 20 W 2.71

Road from Airport to
Coburns mill

24 miles

20 miles

Millions feet of
Glacial water

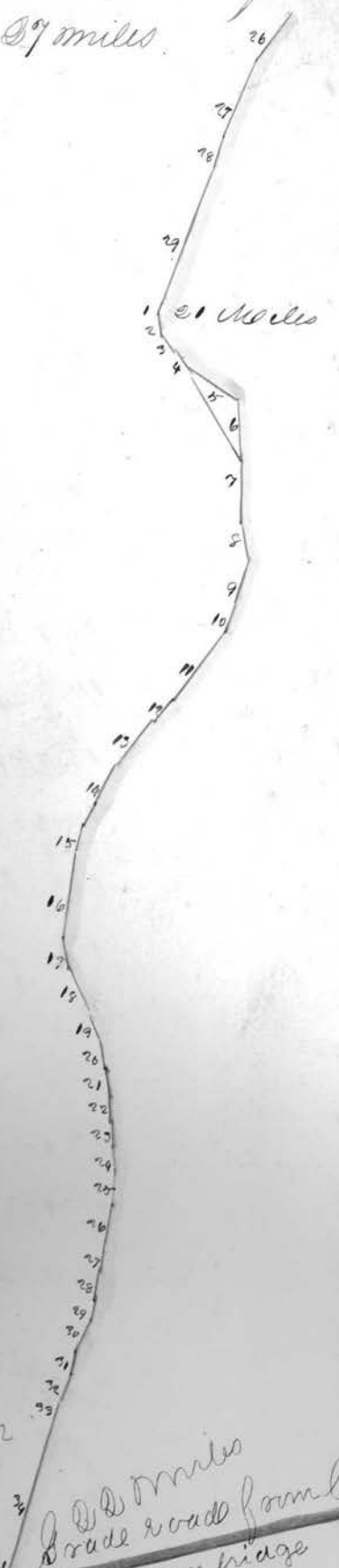
Continued on 40.

25 Miles

- 25 N 20 W 1.83
- 26 N 29 1/4 W 4.17
- 27 N 29 1/4 W 1.95
- 28 N 70 1/4 W 1.86
- 29 N 61 1/4 W 1.01
- 30 N 7 W 1.42
- 31 N 19 1/4 E 1.83
- 32 N 35 1/4 E 1.77
- 33 N 67 E 7.2 20 m
- 1 Same 1.10
- 2 N 33 1/2 E 1.88
- 3 N 27 1/2 E 1.31
- 4 N 20 1/4 E 1.49
- 5 N 17 1/2 E 6.56
- 6 N 13 1/2 E 3.10
- 7 N 17 W 1.64
- 8 N 18 E 1.73
- 9 N 9 1/4 W 1.43
- 10 N 23 1/2 E 1.53
- 11 N 14 1/4 W 1.83
- 12 N 3 1/2 W 3.64
- 13 N 18 1/4 W 3.60
- 14 N 43 W 3.03
- 15 N 7 1/2 E 1.69
- 16 N 1 1/4 E 4.23
- 17 N 3 E 4.42
- 18 N 4 1/4 W 8.39
- 19 N 4 1/2 E 7.24
- 20 N 60 1/2 E 3.87
- 21 N 71 1/4 E 3.37
- 22 N 31 1/2 E 3.05
- 23 N 47 E 3.53

Continued from page 45

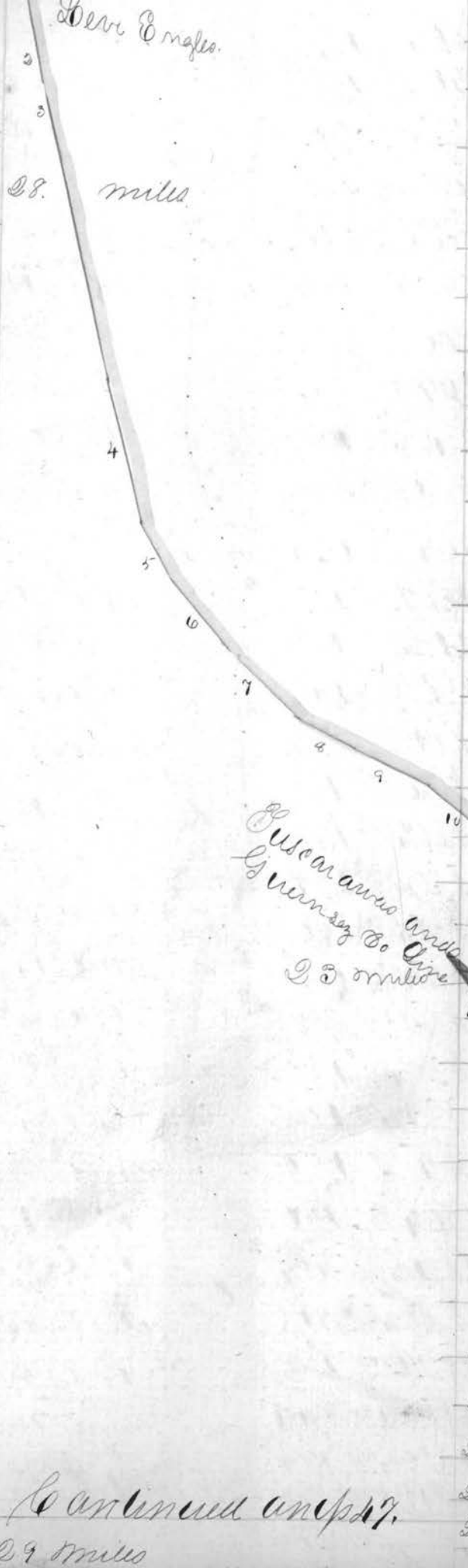
24	N 40 E	4.76	27 miles
1	Same	2.9	
2	N 18 1/4 E	2.08	
3	N 29 1/4 W	2.48	
4	N 4 1/4 W	2.03	
5	N 3 1/4 W	1.80	
6	N 5 1/4 E	1.80	
7	N 4 1/4 W	2.89	
8	N 17 1/4 W	2.36	
9	N 14 1/4 W	1.93	
10	N 18 1/2 W	1.79	
11	N 3 1/4 E	1.41	
12	N 10 1/2 E	2.91	
13	N 3 1/2 E	1.91	
14	N 5 1/4 W	1.95	
15	N 30 1/2 W	1.90	
16	N 30 W	10.00	
17	N 53 W	4.94	
18	N 44 W	2.10	
19	N 40 1/2 W	2.16	
20	N 40 1/2 W	0.71	
21	N 48 1/2 W	4.81	
22	N 21 1/4 W	2.92	
23	N 33 1/4 W	0.34	



1	Same	2.00
2	N 35 E	2.58
3	N 44 1/4 E	0.34
4	N 65 E	2.55
5	N 68 1/4 E	2.40
6	N 29 1/4 E	0.20
7	N 10 W	3.03
8	N 30 1/4 W	0.08
9	N 39 W	2.10
10	N 30 1/2 W	1.87
11	N 31 1/4 W	2.91
12	N 20 E	6.08
13	N 38 1/4 E	2.00
14	N 33 1/2 E	2.58
15	N 2 W	2.03
16	N 17 1/2 W	1.10
17	N 37 1/2 W	1.07
18	N 32 1/4 W	4.36
19	N 6 1/2 E	0.34
20	N 70 E	1.70
21	N 39 1/2 W	1.00
22	N 21 W	3.10
23	N 5 1/4 E	0.22
24	N 20 1/4 W	1.40

33 miles
Grade road from Centerville
to Cambridge

24 N 67 1/4 W 2,00
 25 N 7 8 1,96
 26 N 28 1/4 W 1,45
 27 N 29 1/4 W 2,07
 1 Same 75
 2 N 39 1/2 W 2,54
 3 N 73 W 2,48
 4 N 71 W 2,46
 5 N 80 3/4 W 1,66
 6 N 54 W 2,05
 7 N 72 3/4 W 2,44
 8 N 75 W 1,90
 9 N 87 1/4 W 1,55
 10 N 1 1/2 W 1,17
 11 N 21 1/4 8 1,88
 12 N 10 8 2,06
 13 N 20 W 1,33
 14 N 41 1/2 W 87
 15 N 63 1/4 W 1,24
 Same 2,01
 16 N 27 1/4 W 2,00
 17 N 1/4 8 1,80
 18 N 1 W 2,79
 19 N 20 1/4 W 2,29
 20 N 31 1/2 8 2,00
 21 N 23 8 2,81
 22 N 8 1/4 8 2,73
 23 N 1/4 8 2,75
 24 N 4 1/2 8 5,36
 25 N 6 1/2 W 7,37
 26 N 10 1/4 W 2,35
 27 N 17 W 2,47
 28 N 1 1/2 8 2,29
 29 N 16 1/4 8 1,73



25 N 32 1/4 W 1,12
 26 N 27 1/4 W 1,21
 27 N 6 1/2 W 1,97
 28 N 1 1/4 W 1,35
 29 N 24 1/4 W 1,32
 30 N 15 1/2 W 97
 31 N 17 1/4 8 2,71
 32 N 11 1/2 8 2,76
 33 N 16 1/4 8 1,71
 34 N 25 1/4 W 1,42
 1 Same 1,99
 2 N 14 W 2,39
 3 N 4 W 1,10
 4 N 96 8 1,21
 5 N 85 1/4 8 2,20
 6 N 33 1/4 8 1,66
 7 N 93 1/4 8 2,12
 8 N 38 8 1,40
 9 N 47 1/2 8 1,26
 10 N 20 1/4 8 2,21
 11 N 33 1/4 8 2,27
 12 N 77 1/4 8 1,66
 13 N 84 1/4 8 2,41
 14 N 75 8 2,55
 15 N 69 1/4 8 2,05
 16 N 33 8 1,93
 17 N 5 W 2,42
 18 N 7 1/2 8 1,64
 19 N 20 1/4 8 2,49
 20 N 25 8 1,87
 21 N 40 1/4 8 1,20
 22 N 23 1/4 8 1,86

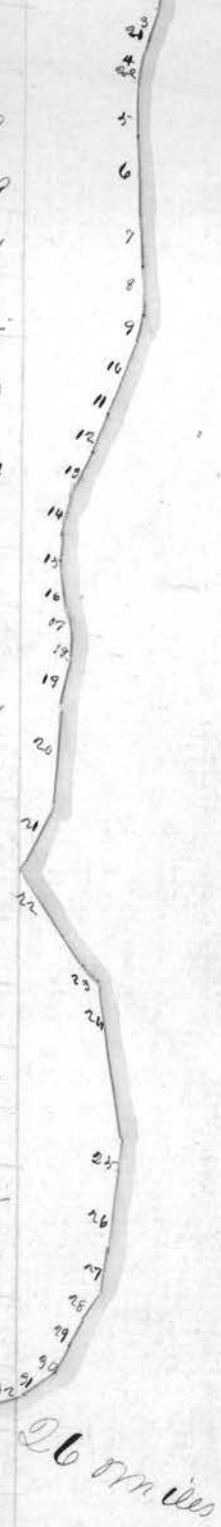
Continued on p. 27.

Continued from page 46.

23	U 24 E	1.32	8	U 13 1/2 E	2.14
24	U 34 1/2 E	1.25	9	U 24 1/2 E	2.01
25	U 25 1/4 E	1.42	10	U 19 1/4 E	1.83
26	U 9 1/4 W	1.50	11	U 2 1/2 E	2.06
27	U 4 1/4 E	.65	12	U 29 1/4 W	2.54
28	U 9 1/2 E	2.67	13	U 2 W	1.29
29	U 11 1/4 W	.95	14	U 11 1/2 W	1.74
30	U 6 1/4 W	2.44	15	U 28 W	1.48
31	U 6 1/4 W	2.47	16	U 29 W	1.91
32	U 5 1/4 W	2.31	17	U 37 1/2 W	1.57
33	U 3 1/2 W	1.58	18	U 47 1/2 W	1.33
34	U 7/4 E	2.90	19	U 35 1/4 W	1.50
35	U 9 1/2 E	.24	20	U 30 1/2 W	1.48
1	Same	1.97	21	U 29 1/4 W	1.05
2	U 10 1/4 E	1.57	22	U 14 1/2 W	1.11
3	U 4 1/2 E	1.83	23	U 17 1/4 W	1.05
4	U 28 1/4 E	1.09	24	U 22 1/4 W	1.00
5	U 21 1/2 E	.93	25	U 26 W	2.50
6	U 20 W	1.10	26	U 14 1/4 W	2.37
7	U 6 W	1.06	27	U 3 1/4 W	2.75
8	U 16 W	1.19	28	U 10 1/4 E	2.70
9	U 20 1/2 W	1.29	29	U 24 1/4 W	.90
10	U 40 W	1.01	30	U 80 W	1.53
11	U 53 1/2 W	1.02	31	U 93 1/4 W	1.55
12	U 65 1/4 W	1.51	32	Same	2.72
13	U 53 1/2 W	1.85	33	U 60 W	1.09
14	U 40 W	1.00	34	U 70 1/4 W	1.57
15	U 30 1/4 W	1.30	35	U 88 1/4 W	.70
16	U 26 W	2.03	1	Same	1.80



17	U 1/4 E	1.81	3	N 87 1/4 W	2.10
18	U 2 1/4 E	1.80	3	N 70 1/4 W	1.56
19	U 2 7/4 E	0.72	4	N 92 1/2 W	2.09
20	U 2 9/4 E	1.80	5	N 67 W	2.07
21	U 3 1/2 E	2.20	6	N 46 1/4 W	1.02
22	N 47 1/2 E	1.83	7	N 20 1/2 W	2.33
23	N 83 1/2 E	1.20	8	N 52 W	1.34
24	N 39 1/2 E	.51	9	N 60 1/2 W	1.00
25	N 13 1/4 E	3.78	10	N 19 1/4 W	1.80
26	N 19 1/4 E	3.34	11	N 9 W	1.43
27	N 68 1/4 E	1.53	12	N 31 W	.87
28	N 31 1/4 E	2.16	13	N 52 1/2 W	1.08
29	N 14 E	3.03	14	N 60 1/4 W	1.30
30	N 20 1/4 E	5.51	15	N 70 1/4 W	1.59
31	N 43 1/4 E	4.05	16	N 91 1/4 W	1.50
32	N 70 1/4 E	4.40	17	N 74 W	1.57
33	N 63 1/4 E	4.05	18	N 77 W	2.05
34	N 60 1/4 E	1.21	19	N 80 1/4 W	1.33
35	N 64 E	4.55	20	N 84 1/4 W	1.95
36	N 41 1/4 E	4.18	21	N 7 E	1.30
37	N 29 E	1.64	22	N 64 E	1.56
1	Same	5.31	23	N 20 1/4 E	1.74
2	N 33 E	5.43	24	N 0 1/4 W	.71
3	N 8 1/2 W	3.23	25	N 50 1/2 W	1.22
4	N 27 1/4 W	5.38	26	N 30 1/4 W	2.44
5	N 76 1/4 E	1.33	27	N 20 1/4 W	1.39
6	N 8 1/4 E	1.65	28	N 13 1/4 W	2.32
7	N 71 1/4 E	1.58	29	N 28 W	2.00

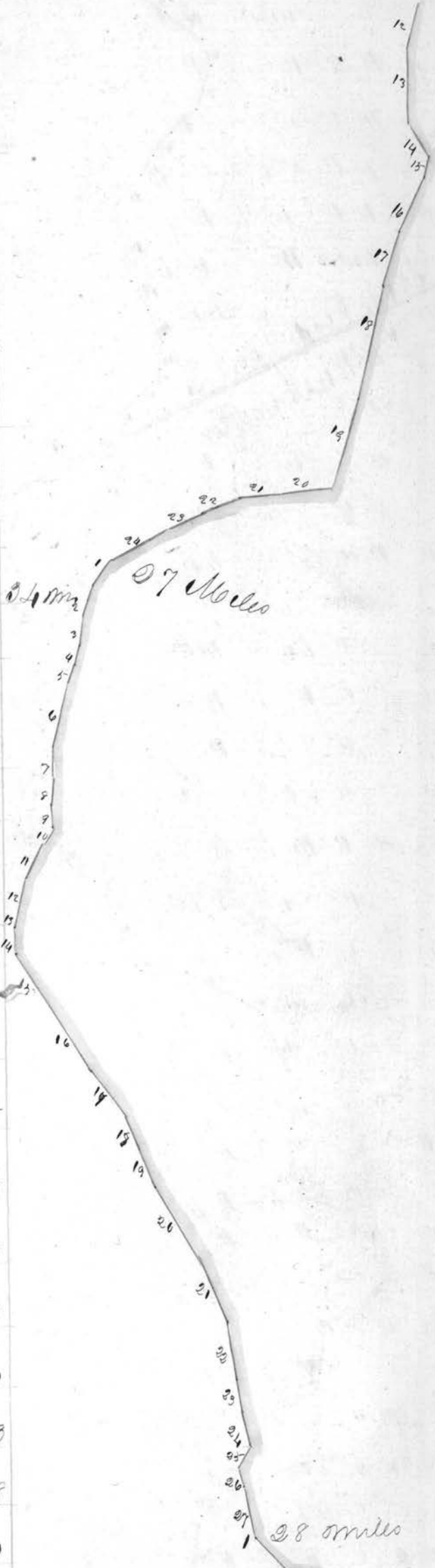


26 miles

Continued on p. 118

Continued from page 47.

30	N 6 1/4 W	1.40
31	N 5 W	2.62
32	N 5 1/2 W	2.92
33	N 16 1/4 W	1.61
34	N 1 1/4 W	1.03
35	N 9 W	6.57
36	N 10 1/4 W	2.99
37	N 7 1/2 W	9.08
38	N 19 1/2 W	2.30
39	N 10 1/4 E	1.04
40	N 89 1/4 E	.81
41	N 6 1/4 E	.91
1	Same	.85
2	N 5 W	1.27
3	N 8 1/2 W	1.57
4	N 22 W	5.41
5	N 24 W	1.08
6	N 40 1/4 W	2.58
7	N 53 1/4 W	2.98
8	N 72 1/2 W	3.10
9	N 79 1/4 W	5.95
	Same	.50
10	N 8 E	5.81
11	N 17 1/2 E	2.31
12	N 10 1/4 E	.80
13	N 65 1/4 W	2.70
14	N 53 1/4 W	2.75
15	N 31 W	6.58
16	N 20 1/4 W	2.31



17 N 23° W 5.15
 18 N 24° W 4.50
 19 N 30 3/4° W 4.80
 20 N 45 1/2° W 8.50 35 miles

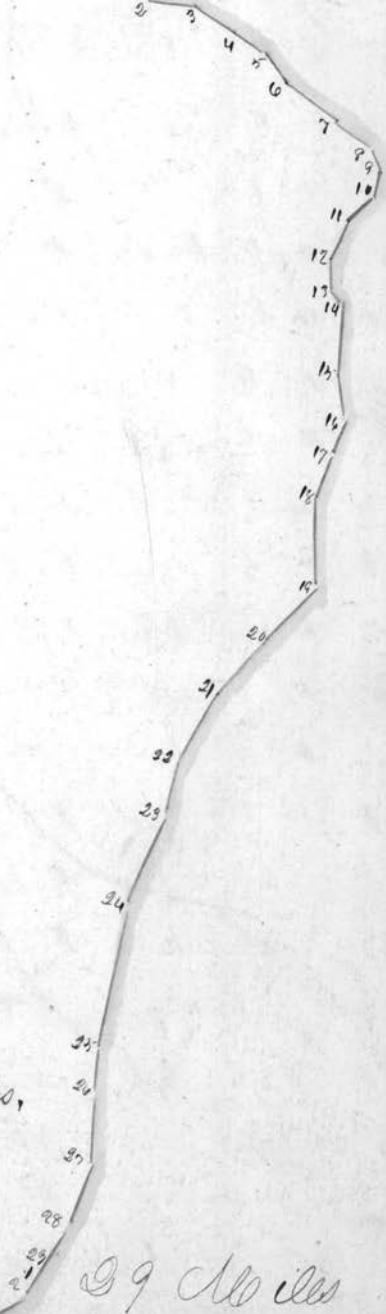
1 Same 8.10
 2 N 32 1/2° W 6.64
 3 N 61 1/4° W 8.17
 4 N 30 1/4° W 1.24

5 N 52° W 9.50
 Same 7.65

6 N 51 1/4° W 4.56
 7 N 33 3/4° W 2.98

8 N 48 1/4° W 2.44

9 N 47 1/2° W 7.15 58. 33. Chains,



39 Miles

Continued on page 49.