

Continued from Page 29.

N 71 1/2 NW 10.

N 52 1/2 NW 10.

N 89 NW 5

S 85 NW 6.

N 32 NW 5, 5.

N 50 1/2 NW 9, 5

S 70 NW 10.

N 70 NW 10.

S 75 1/2 NW 14.

S 5-8 NW 14.

S 44 1/2 NW 8.

S 80 NW 81

S 87 NW 81

C. P. Line.

Q 71 1/2 NW 20.

Q 80 1/2 NW 8.

Q 58 NW 18.

Q 40 NW 20.

Q 5 1/2 NW 20.

Q 7 1/2 NW 10.

Q 80 NW 10.

Q 7 1/2 NW 20.

N 80 NW 14

N 60 NW 18

N 80 NW 8.

Q 40 1/2 NW 8, 8, 8

Q 9 1/2 NW 20

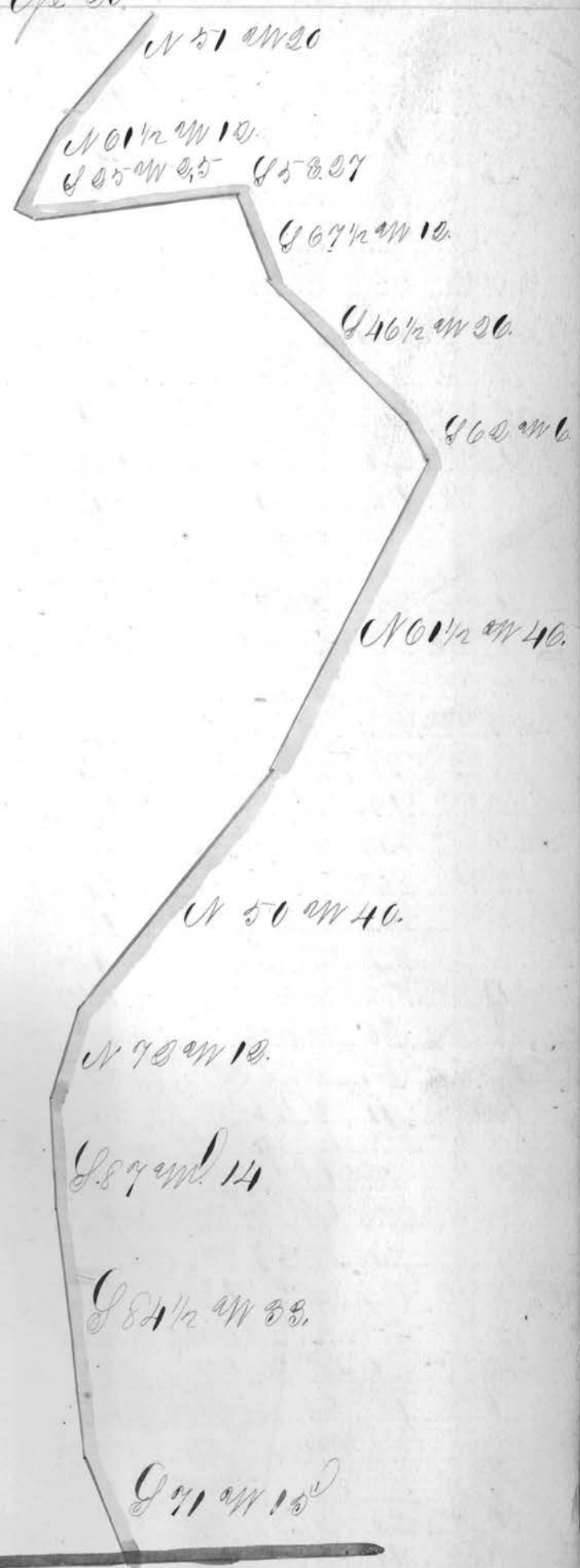
Q 3 1/2 NW 7.

Q 14 NW 10

Q 50 NW 20

Continued on 31

Continued from p 30



Plot of the State road from the Ohio river
 opposite the State of Grave Creek running thence
 to Seneca ville in Perry County as Surveyed
 by

Seneca ville

Bearings Distances

N 71° W 320	N 66° W 91
Same 50	N 5° W 28 410
N 64° W 110	Same 18 600
N 70° W 26	N 83° W 13
S 79° W 116	S 53° W 88
S 74° W 18	S 60° W 40
Same 130	S 86° W 65
S 87° W 20	N 89° W 56.8
S 66° W 26	N 84° W 44.6
S 58° W 30	N 61° W 32.5
N 55° W 28	Same 2.5
S 51° W 4	N 73° W 38.8
S 45° W 28	N 43° W 48.8
S 63° W 20	N 27° W 73
S 60° W 18	N 29° W 73.8
Same 24	N 79° W 38.3
S 65° W 35	N 86° W 25.7 0. m.
S 83° W 13	S 80° W 53.7
N 73° W 8	N 49° W 45
N 57° W 98	N 62° W 17.7
N 53° W 16	S 0° 40' W 21.3
N 46° W 48	N 55° W 59.5

44 miles

43 miles

40 miles

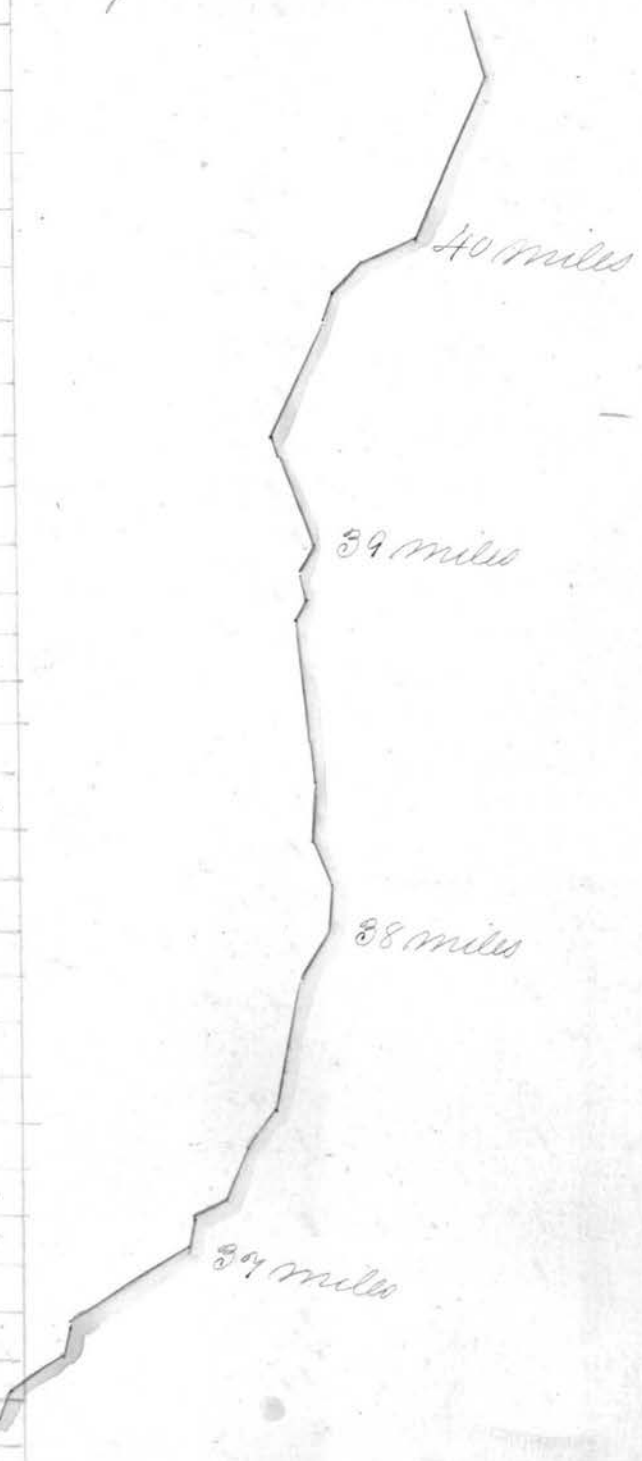
41 miles

N 47° W 50.4	N 65° W 10
N 87° W 38	N 60° W 9.5
N 43° W 14.5	S 82° W 6
Same 15	S 46° W 88
N 62° W 89.3	S 80° W 85
N 86° W 20	S 80° W 23.9
N 27° W 326	Same 9
N 76° W 15.6	N 57° W 138
N 82° W 10	N 85° W 19.3
N 17° W 11.4	N 75° W 32
S 73° W 38.7	N 74° W 31.7
N 80° W 10.5	N 45° W 25
S 63° W 8	S 25° 30' W 33
S 62° W 12	S 3° W 60.8
S 65° W 64	S 16° W 11.5
West 23	S 9° 11' W 3
S 31° W 6.5	8 Same 18.6
Same 40	S 48° W 21.4
S 57° W 58	S 19° 30' W 32
S 85° W 17	Same 3
S 69° W 10.3	S 15° W 14.4
S 45° W 146	S 46° W 29
S 37° W 41.6	S 79° W 182
30	N 61° W 27
	S 40° W 25

Continued on p. 2

30. Continued from p 31

S 41W 20.7	S 84W 23.7
S 41W 20	S 74W 210.8
S 83W 11	S 68W 29.5
S 66W 63	S 80W 100
S 60W 7	N 76W 15.3
S 55W 63	N 42W 22
S 45W 124	N 33W 7.8
S 42W 95	N 23W 27.3
S 29W 8	N 36E 28.1
S 31W 84	Same 1.3
S 68W 106	S 84W 14.3
Same 9	S 86W 20.9
S 74W 83	N 26W 7.5
S 81W 75	N 81W 25
S 61W 5	N 51W 13
S 5W 8	S 83W 16.7
S 24W 23	S 45W 75.7
S 3W 75	S 68W 80
S 33W 12	N 75W 10
S 22E 24.7	S 64W 70
N 80W 200	S 73W 34
S 89W 79.5	Same 10
S 57W 8.7	N 80W 23
S 21W 73	S 73W 14.7
S 77W 36	Same 12.5
S 8W 57	S 85W 39.8
S 16E 41	S 79W 77
S 68W 7	N 84W 23
S 77W 10	N 75W 54
N 80W 238	N 89W 23.36 miles
N 80W 346	S 59W 60
N 69W 77.9	S 71W 37.8
N 78W 293	Same 20.8
N 23W 20	N 76W 30
N 51W 10	N 63W 20.4



N 07 W	19.9	N 71 W	37.8
N 78 W	29.3	Same	20.8
N 23 W	20	N 76 W	30.
N 51 W	10	N 68 W	20.4
Same	5.6	N 69 W	23.5
N 52 W	8.6	N 85 W	60
N 71 W	24	N 66 W	38.
N 72 W	24.9	N 66 W	55
S 16 W	20.4	N 85 W	57
S 42 W	20.4	N 85 W	6.9
S 26 W	69.7	N 51 W	21
N 53 W	77	N 55 W	8.8
S 54 W	50	N 72 W	10
Same	3.	Same	10
S 69 W	35	N 74 W	6
N 84 W	35	N 71 W	5
West	105.5	N 70 W	10, 9
N 85 W	12.7	N 84 W	34.7
S 72 W	21.5	N 83 W	10.5
N 88 W	13.7	W	13.7
N 58 W	14	S 85 W	9.6
S 72 W	23.8	S 58 W	15
S 76 W	8.3	Same	18.4
S 74 W	33.	N 79 W	35
S 76 W	25.5	N 15 W	20.4
Same	18.	N 60 W	35.3
S 89 W	16.7	N 43 W	9.5
S 64 W	8.3	N 72 W	21.5
S 87 W	8.	Same	28.
S 89 W	9	S 66 W	7
N 89 W	13.7	Same	18.6
N 65 W	35.4	S 60 W	13.
N 55 W	8.3	S 14 W	10.
N 47 W	11.3	S 83 W	9.3.
N 55 W	16.5	S 73 W	19.3
N 08 W	19.6	N 64 W	11
S 86 W	11	N 49 W	73.7
S 45 W	50.5	N 80 W	60
S 63 W	5.6	N 64 W	23.20 miles
S 44 W	4.4	N 55 W	27.3.
N 83 W	39.6	Same	38.
N 86 W	24	N 88 W	63.4
N 82 W	31	N 49 W	113.5
Same	7.6	N 86 W	18.8

35 miles

34 miles

33 miles

32 miles

County line between
Belmont & Brunswick Co
31 miles

30 miles

30 miles

29 miles 33

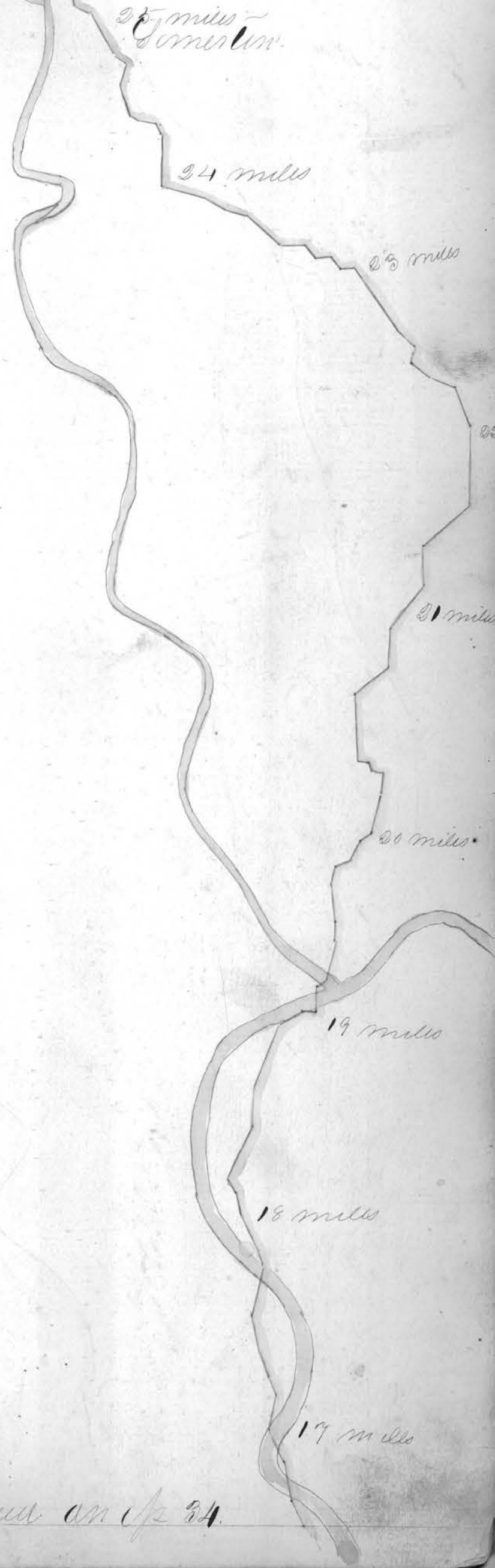
Continued Encp

Continued from page 29

88 AM 27.4 N61 W 16.
 Same 8. N60 W 6.5
 N76 W 13. N60 W 13.6
 N89 W 15. N55 W 5.5
 S80 W 11.6 N76 W 16.6
 S86 W 12. N52 W 3.3
 S52 W 17. N75 W 09.6
 S65 W 49.7 N75 W 03.
 S38 W 6. West 46
 S77 W 3.5 Same 47.6
 S40 W 9. N64 W 14.8
 S26 W 18. Same 10.3
 S33 W 6.5 Same 24
 S39 W 13.6 N80 W 47.7
 N88 W 17. N42 W 135.5
 N77 W 9.2 N78 W 32.
 S43 W 13.3 West 35.7
 S57 W 26. N68 W 18.3
 Same 08.4 Same 6.8
 S54 W 8. N52 W 84.4
 S39 W 8. S85 W 42.5
 S77 W 13. S33 W 24.9
 S43 W 8.2 S36 W 19.3
 Same 6. S59 W 44
 S9 W 18. N85 W 15.4
 S47 W 23. N26 W 7.5
 S7 W 18. N31 W 10.3



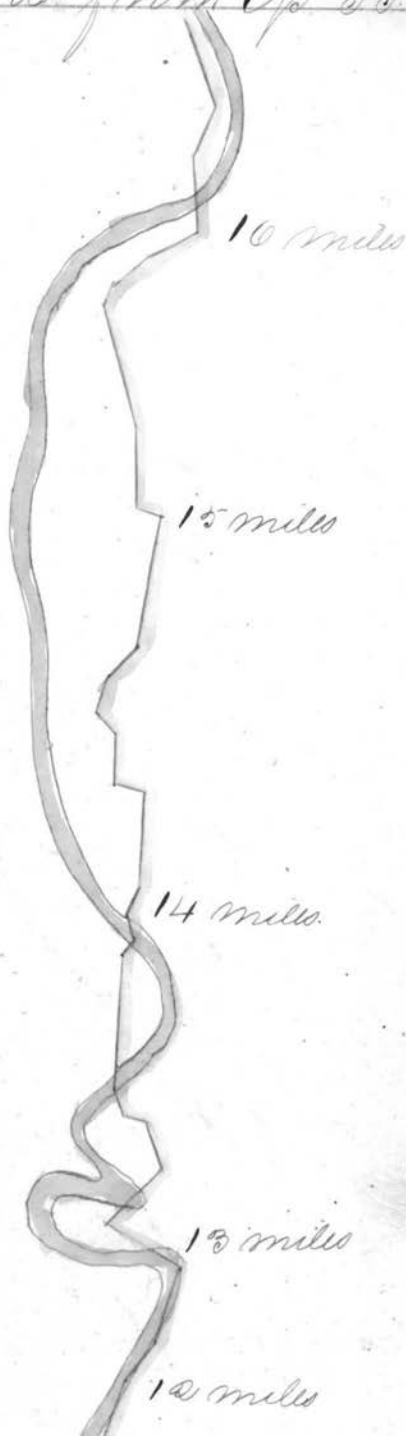
Same 14 N 07° W 5.3
 S 56° W 9.7 N 53° W 10.
 S 29° W 57.5 U 74° W 14.3
 S 17° W 25 S 62° W 8.7
 S 45° W 15.3 N 88° W 19.7
 S 19° W 10.8 S 71° W 80.8
 S 18° W 8. S 41° W 11.
 S 8° W 9. S 66° W 8.
 S 10° W 9.3 West 23.
 S 22° W 19. Same 23.
 S 19° W 16.6 U 75° W 7.5
 S 17° W 8.7 S 42° W 10.7
 U 80° W 28. S 81° W 5
 S 85° W 11.3 S 10° W 42
 U 80° W 28.5 S 18° W 10.2
 S 83° W 0.9 S 2° W 0.4
 S 26° W 6. S 4° W 10.6
 S 6° W 18. S 62° W 11.3
 S 27° W 12.8 S 89° W 40.
 S 62° W 33. S 65° W 48.7
 S 88° W 19.5 S 75° W 33.8
 U 77° W 21. S 80° W 38.
 S 81° W 13.3 U 85° W 15
 S 45° W 9. U 65° W 40.7
 S 55° W 34.4 U 11° W 21.7
 S 62° W 10. Same 26.
 S 57° W 35.3 N 88° W 23.2
 S 60° W 5.7 U 80° W 10.
 S 88° W 4. U 66° W 11.3
 S 20° W 10. U 56° W 18.3
 S 3° W 33. U 80° W 14.3
 S 61° W 17.3 S 84° W 10.
 S 78° W 18.7 S 75° W 9.3
 S 70° W 40.4 S 84° W 7.5
 Same 17. S 80° W 10.7
 S 80° W 10. S 70° W 9.3
 S 36° W 10.5 S 24° W 7.3
 S 15° W 36. S 36° W 5.5
 S 7° W 39.7 S 38° W 0.
 S 86° W 8.7 S 82° W 0.7
 West 23. S 37° W 12.4
 S 86° W 13.3 S 58° W 7.4
 S 88° W 0.3 S 53° W 38.7
 S 85° W 13.0 U 63° W 33.
 S 75° W 27.3 U 60° W 18.3
 U 23° W 9.3 U 45° W 44.3
 U 36° W 4
 U 41° W 8.5
 U 48° W 7.3
 U 54° W 18.7
 U 50° W 17.5



U 50° W 17.5 Continued on p 34.

84

Continued from p 83





11 miles

10 miles

9 miles

8 m

7 m

6 m

Rio Preto

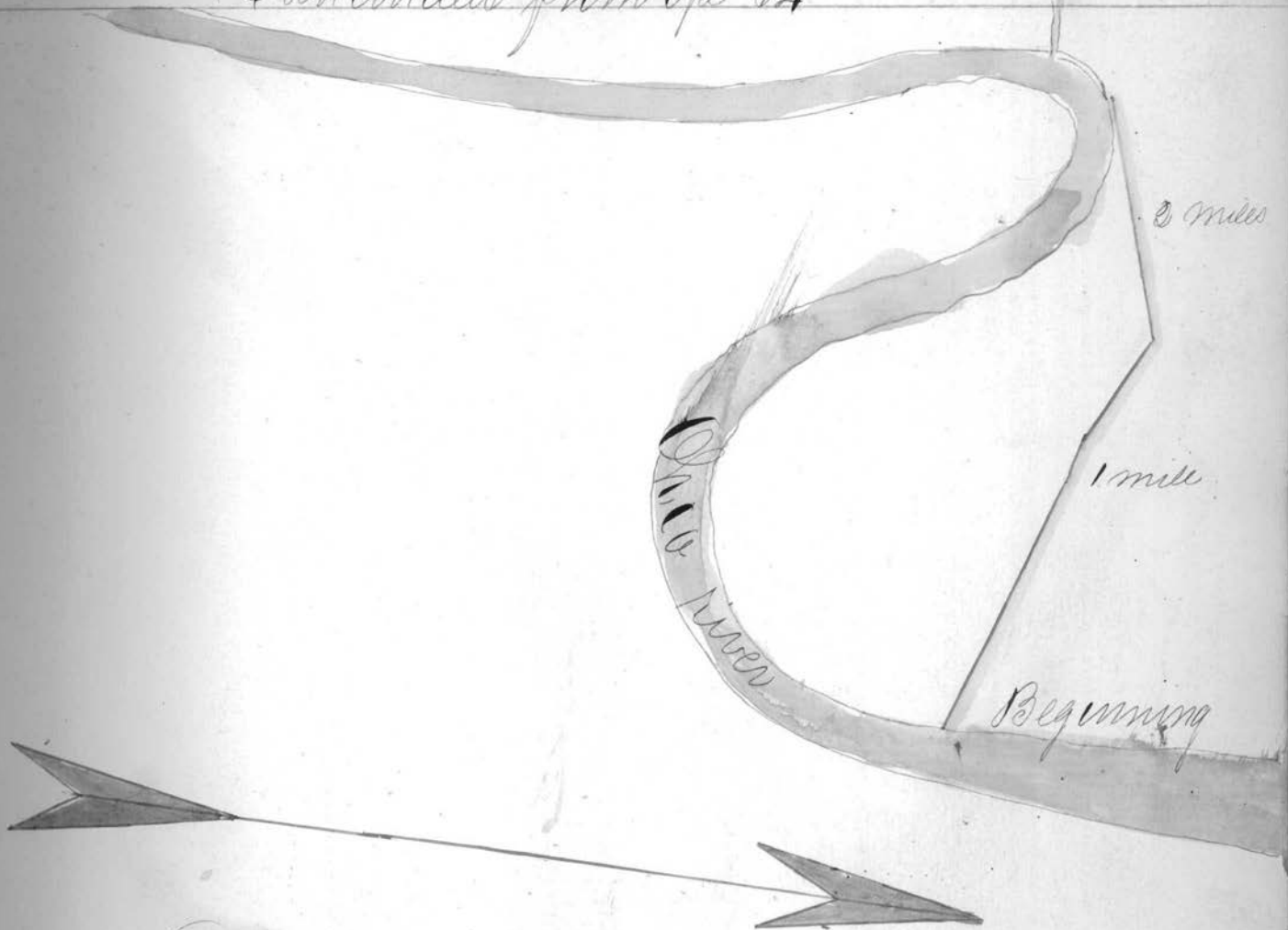
5 miles

4 miles

3 m

Samuelson on Apr 30

Continued from p 34



Plot of a State Road beginning at the Mouth
of Captina Creek and running thence to
the Seventeen mile tree in Monroe County
as Surveyed by Daniel Gray A.D. 1839

Daniel Gray

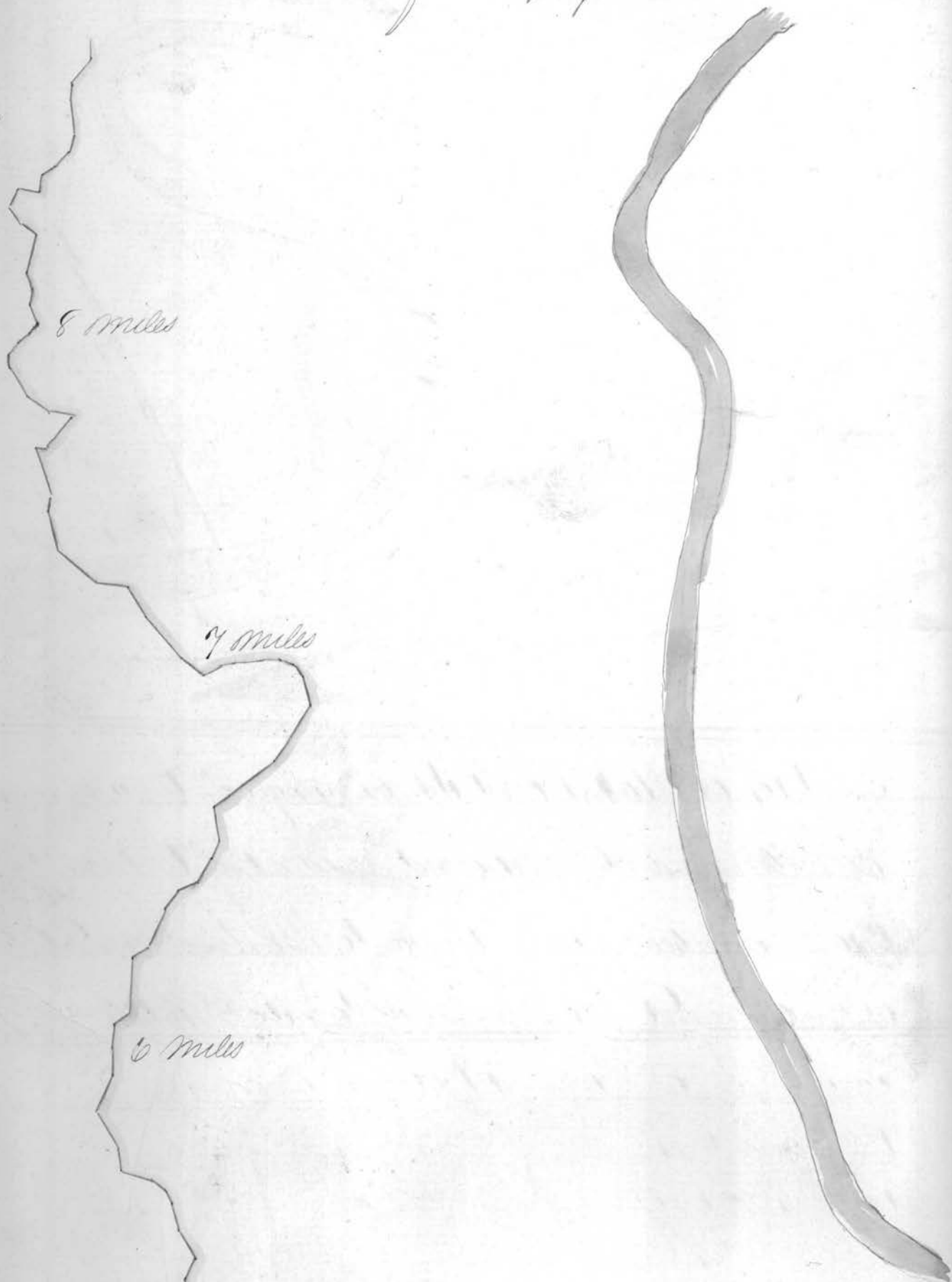
11 miles

10 miles

9 miles

Continued on page 36.

Continued from page 25.



5 miles

5 miles County line be-
ween Belmont & Monroe Co.

4 miles

7 1/2 miles

2 miles

Continued on Page 37.

Continued from page 30

39

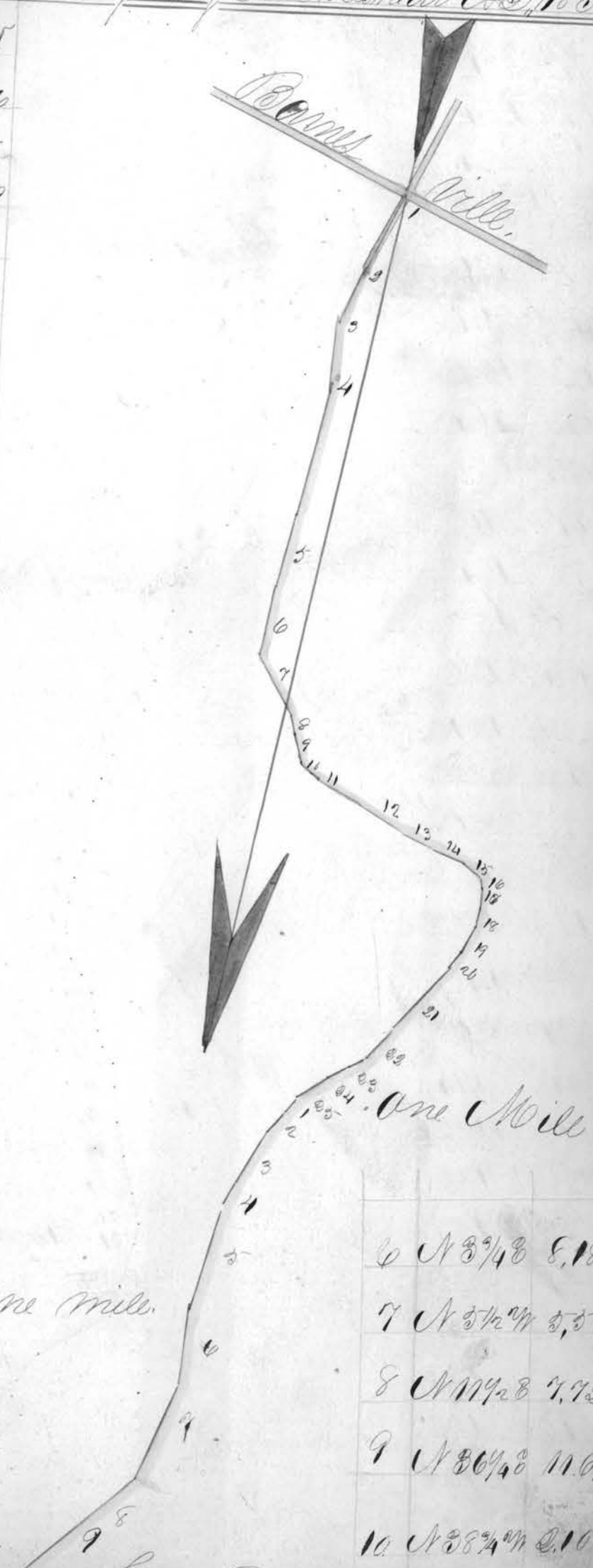


mile

Plot of the State road beginning at Barnesville
in Belmont County running thence through
Fairview in Gwynn Co thence to the Ohio
Canal at Lock No 17 near Craddenbutter in Sus-
sex Co as surveyed by O. Brashear A.D. 1838

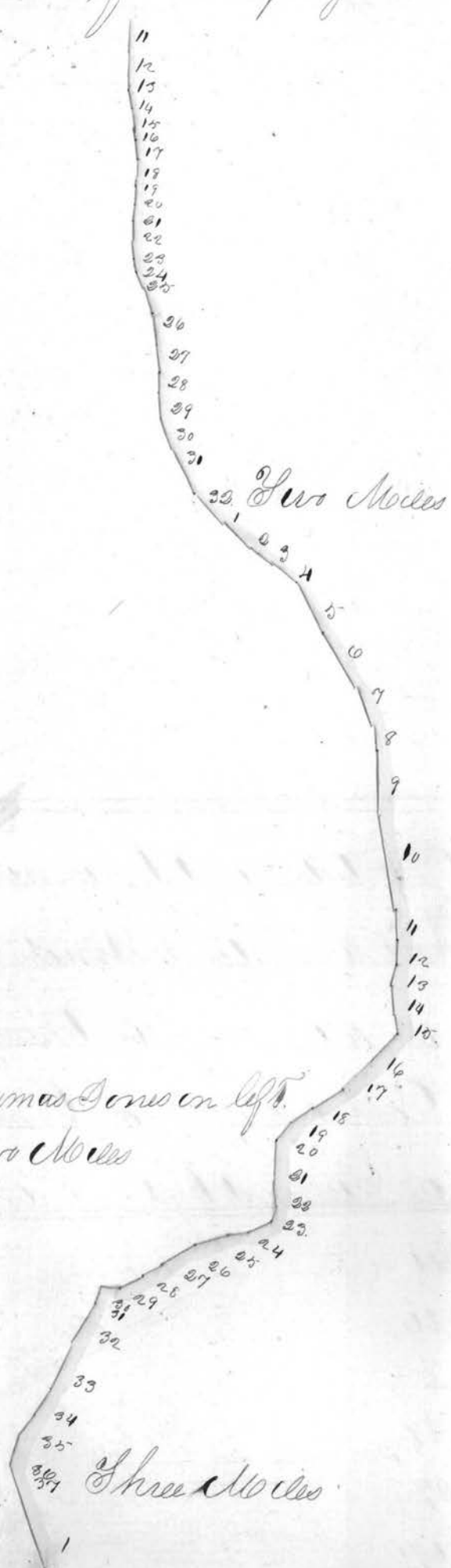
The Course Out

- 1 N 14 3/4 W 6.26
- 2 N 13 8 4.5
- 3 N 2 1/2 W 5.39
- 4 N 2 8 9.07
- 5 N 3 8 5.09
- 6 N 4 1/4 W 5.38
- 7 N 4 3/2 W 4.99
- 8 N 5 1/2 W 4.48
- 9 N 20 1/2 W 2.08
- 10 N 60 1/2 W 1.71
- 11 N 78 W 3.58
- 12 N 70 1/2 W 3.66
- 13 N 78 1/4 W 2.53
- 14 N 80 1/4 W 3.75
- 15 N 61 1/2 W 1.85
- 16 N 30 W 91
- 17 N 7 3/4 W 1.53
- 18 N 7 1/2 1.53
- 19 N 14 8 1.91
- 20 N 21 3/4 1.50
- 21 N 31 8 2.03
- Same 4.16
- 22 N 29 8 2.89
- 23 N 53 8 1.46
- 24 N 53 1/2 1.90
- 25 N 25 1/2 2.16 One mile.
- 1 Same 2.10
- 2 N 23 1/2 1.56
- 3 N 31 1/2 2.00
- 4 N 19 8 2.57
- 5 N 20 1/2 1.76

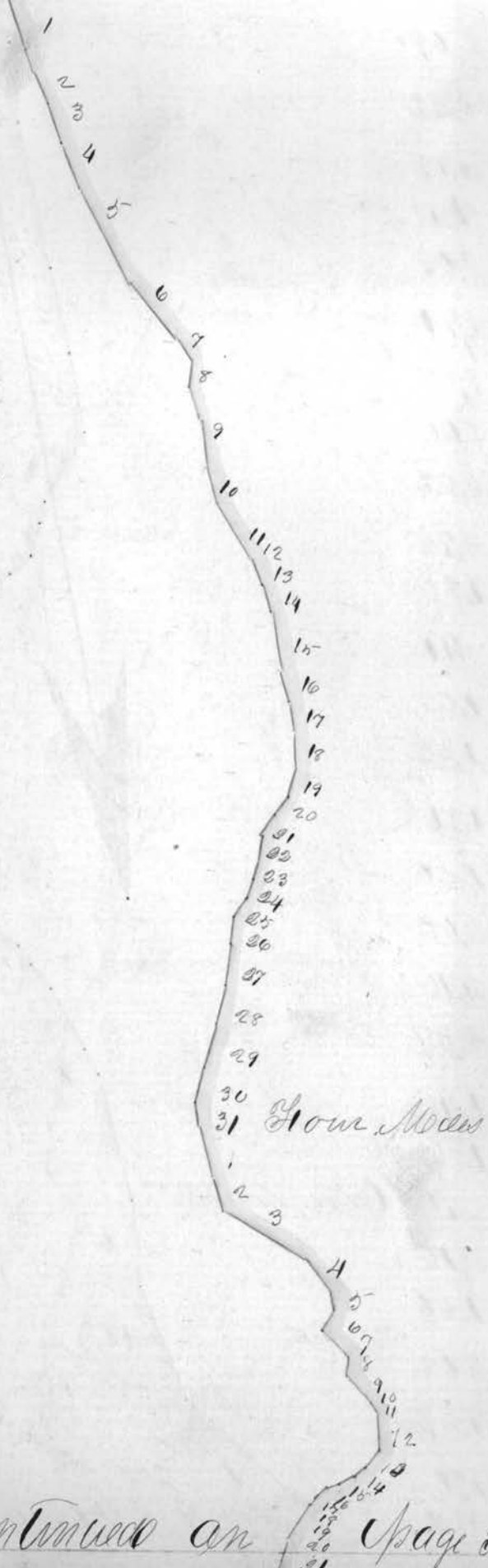


Continued on page 88.

11	N 30 1/4 W	1.09
12	N 39 W	.98
13	N 56 3/4 W	1.12
14	N 46 W	1.32
15	N 41 1/4 W	1.19
16	N 48 1/4 W	1.12
17	N 31 1/2 W	1.21
18	N 39 1/2 W	.60
19	N 41 1/2 W	1.11
20	N 31 1/4 W	1.08
21	N 36 1/2 W	1.39
22	N 48 1/2 W	1.08
23	N 48 W	1.09
24	N 63 3/4 W	1.01
25	N 60 1/4 W	1.82
26	N 43 W	2.14
27	N 43 1/2 W	1.74
28	N 45 1/4 W	1.54
29	N 32 1/4 W	1.62
30	N 56 1/4 W	2.34
31	N 66 3/4 W	3.14
32	N 75 W	2.53
1	Same	1.1
2	N 85 3/4 W	2.31
3	S 87 1/4 W	1.84
4	West	2.04
5	N 68 W	3.88
6	N 70 1/2 W	2.26
7	N 67 W	2.69



7	U 67 1/4 W	2.09
8	U 48 1/2 W	1.93
9	U 49 1/4 W	2.04
10	U 45 1/4 W	0.33
11	M 4 1/2 W	2.11
12	U 35 1/2 W	1.04
13	U 24 1/2 W	1.55
14	U 20 1/2 W	1.80
15	U 33 1/4 W	1.31
16	U 4 8	2.85
17	U 9 8	2.20
18	U 22 8	2.15
19	U 19 8	1.88
20	U 5 1/2 W	1.45
21	U 32 1/2 W	2.08
22	U 44 1/2 W	1.74
23	U 20 1/2 W	1.28
24	U 36 1/4 8	1.58
25	U 12 1/2 8	1.39
26	U 38 8	2.25
27	U 17 1/4 8	2.49
28	U 30 1/4 8	1.33
29	U 14 8	1.62
30	U 10 1/4 8	1.56
31	U 6 1/2 W	.80
32	U 18 1/2 W	2.92
33	U 10 1/2 W	2.38



Continued on Page 89.

Continued from p 38

- 34 N 9 1/2 W 2.10
- 35 North 1.09
- 36 N 19 1/4 W 2.41
- 37 N 59 1/2 W 2.2
- 1 Same 8.11
- 2 N 60 3/4 W 2.10
- 3 N 62 1/4 W 2.71
- 4 N 59 W 3.
- 5 N 69 W 0.88
- 6 N 80 W 2.38
- 7 N 78 1/2 W 1.67
- 8 N 32 W 1.98
- 9 N 56 W 2.02
- 10 N 46 1/2 W 3.05
- 11 N 61 1/2 W 2.18
- 12 N 71 1/2 W 3.81
- 13 N 68 W 1.99
- 14 N 53 W 1.88
- 15 N 44 1/4 W 3.81
- 16 N 50 1/2 W 2.10
- 17 N 49 1/2 W 2.11
- 18 N 32 1/2 W 2.19
- 19 N 33 1/4 W 1.79
- 20 N 9 1/4 W 1.53
- 21 N 14 1/4 W 1.18
- 22 N 33 1/4 W 1.44
- 23 N 33 1/4 W 1.40
- 24 N 14 1/2 W 1.52
- 25 N 9 1/4 W 1.40
- 26 N 32 W 1.93
- 27 N 30 W 2.35

Three No.

Five miles

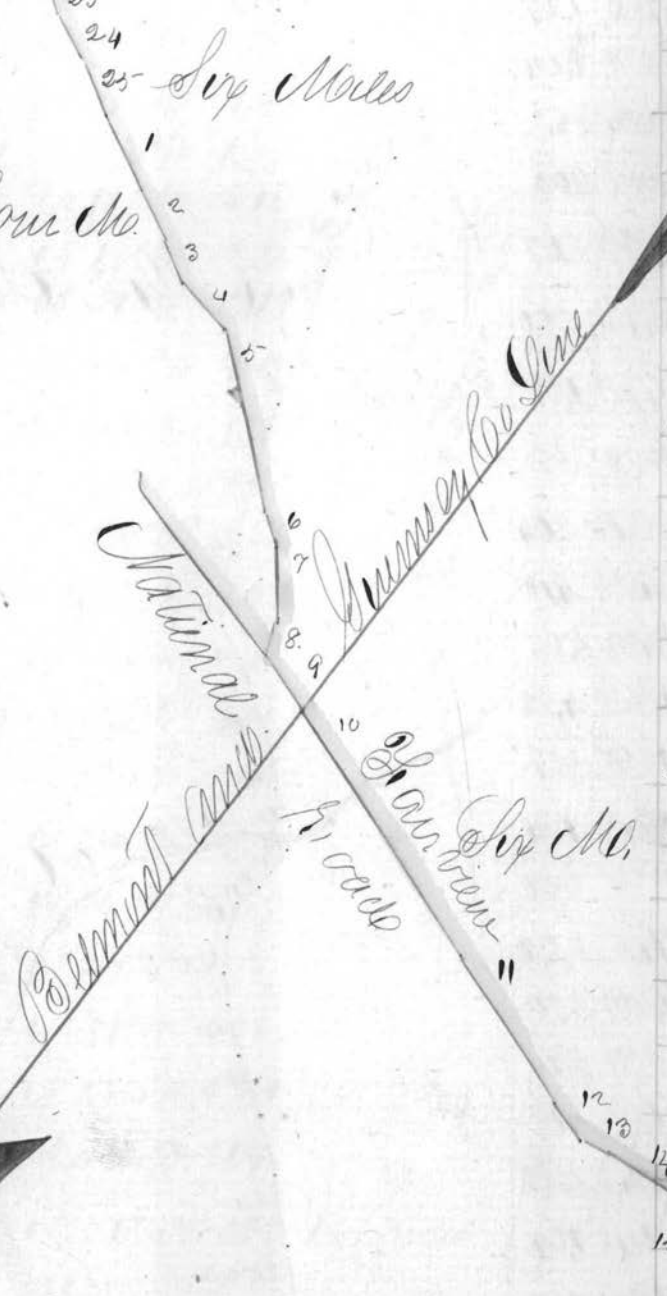
Five No.

- 24
- 25
- 26
- 27
- 28
- 29
- 30
- 31
- 32
- 33
- 34
- 35
- 36
- 37
- 38
- 39
- 40
- 41
- 42
- 43
- 44
- 45
- 46
- 47
- 48
- 49
- 50
- 51
- 52
- 53
- 54
- 55
- 56
- 57
- 58
- 59
- 60
- 61
- 62
- 63
- 64
- 65
- 66
- 67
- 68
- 69
- 70
- 71
- 72
- 73
- 74
- 75
- 76
- 77
- 78
- 79
- 80
- 81
- 82
- 83
- 84
- 85
- 86
- 87
- 88
- 89
- 90
- 91
- 92
- 93
- 94
- 95
- 96
- 97
- 98
- 99
- 100

- 22 North 49
- 23 N 19 3/4 W 1.13
- 24 N 33 1/4 W 1.03
- 25 N 35 1/4 W 1.12
- 26 N 50 1/4 W 1.
- 27 N 39 W 1.39
- 28 N 30 W 2.18
- 29 N 43 1/2 W 1.54
- 30 N 54 1/2 W 1.74
- 31 N 38 1/2 W 1.06
- 32 N 50 1/4 W 2.03
- 33 N 9 1/2 W 1.77
- 34 N 14 1/4 W 3.13
- 35 N 1/2 E 1.2
- 36 N 11 1/2 W 1.48
- 37 N 61 1/2 W 2.01
- 38 N 30 1/2 W 3.98
- Same. 15.35
- 1 Same 2.18
- Same. 3.00
- 2 N 18 1/2 W 0.59
- 3 N 30 W 1.49
- 4 N 31 1/2 W 3.16
- Same 3.31
- 5 N 6 1/4 W 2.04
- 6 N 2 1/4 W 3.23
- 7 N 5 W 3.34
- 8 N 44 1/4 W 1.00
- 9 N 57 1/2 W 3.58
- 10 N 54 W 2.47
- 11 N 45 1/4 W 1.77
- 12 N 38 1/4 W 2.27

28 N 29 3/4 W 280
 29 N 18 3/4 W 280
 30 N 29 W 280
 31 N 43 1/2 W 109
 1 N 53 1/4 W 221
 2 N 63 1/4 W 220
 3 S 83 1/4 W 585
 4 N 74 3/4 W 225
 5 N 56 W 129
 6 N 53 1/4 W 176
 7 N 86 1/2 W 208
 8 N 40 W 145
 9 N 85 1/2 W 188
 10 N 73 3/4 W 71
 11 N 67 1/2 W 84
 12 N 39 1/2 W 250
 13 N 41 1/4 S 120
 14 N 21 S 103
 15 N 18 1/2 S 85
 16 N 41 1/4 S 91
 17 N 13 1/2 S 71
 18 N 20 1/2 S 69
 19 N 4 1/2 S 190
 20 N 8 1/2 W 80
 21 N 26 1/4 W 92

How No.



13 N 24 1/4 W 865
 14 N 57 1/4 W 232
 15 N 47 1/2 W 195
 16 N 64 1/2 W 117
 17 N 86 1/4 W 278
 18 N 65 3/4 W 148
 19 N 49 1/2 W 251
 20 N 40 W 247
 21 N 29 W 203
 22 N 59 1/4 W 294
 23 N 37 W 178
 24 N 65 1/2 W 248
 25 N 61 W 244
 1 N 62 W 258
 2 N 64 1/2 W 266
 3 N 62 W 254
 4 N 79 W 224
 5 N 50 1/2 W 265
 6 N 56 1/4 W 165
 7 N 39 1/2 W 284
 8 N 23 1/2 W 212
 9 N 74 1/2 W 258
 10 N 71 W 204
 11 N 70 1/4 W 229
 12 N 73 3/4 W 203

Seven No.

Continued on p. 40

14
 15
 16
 17
 18
 19
 20
 21
 22
 23
 24
 25