

Continued from page 19

Q308	10
Q108	10
Q350M	11
Q30M	10
Q118	9
Q108	11
Q318	10
Q118	9
Q208	10
Q228	10
Q358	19
Q248	17
Q160M	14
Q260M	13
Q180M	20
Q60M	9
Q810M	23
Q530M	10
Q300M	17
Q80M	9
Q400M	14
Q350M	8
Q400M	17
Q400M	10

16 miles

18 miles

Q58	10
Q48	10
Q58	14
Q0M	20
Q430M	6
Q818	8
Q328	8
Q880M	9
Q440M	48
Q330M	10
Q410M	30
Q410M	10
Q880M	3 18m
Same	10
Q10M	20
Q190M	10
Q100M	10
Q170M	13
Q180	20
Q30M	20
Q640M	18
Q880M	10
Q700M	24
Q860M	13

48 AM 14

45 AM 10

46 AM 11

47 AM 12

46 AM 10.

48 AM 12.

48 AM 4

48 AM 8

48 AM 10.

48 AM 9

48 AM 10.

48 AM 12

48 AM 9

48 AM 12

48 AM 15

48 AM 4

48 AM 12

48 AM 6

48 AM 10

10 miles
17 miles

48 AM 10.

48 AM 30

48 AM 18

48 AM, 23

48 AM 36.

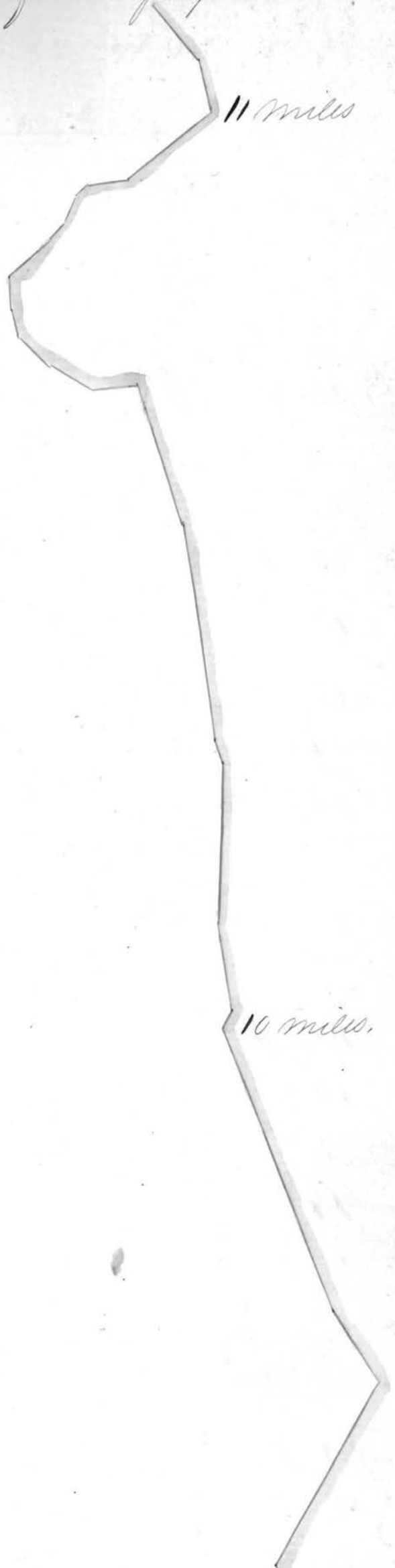
48 AM 16 19 mi

to the end

near Mr. Coates

Continued on 21

Continued from page 90





9 miles

Continued on D.



6 miles to the National road

Part of the road from the Ohio river at Sistersville to the town of Greepoot as surveyed by Elias Williams A.D. 1831

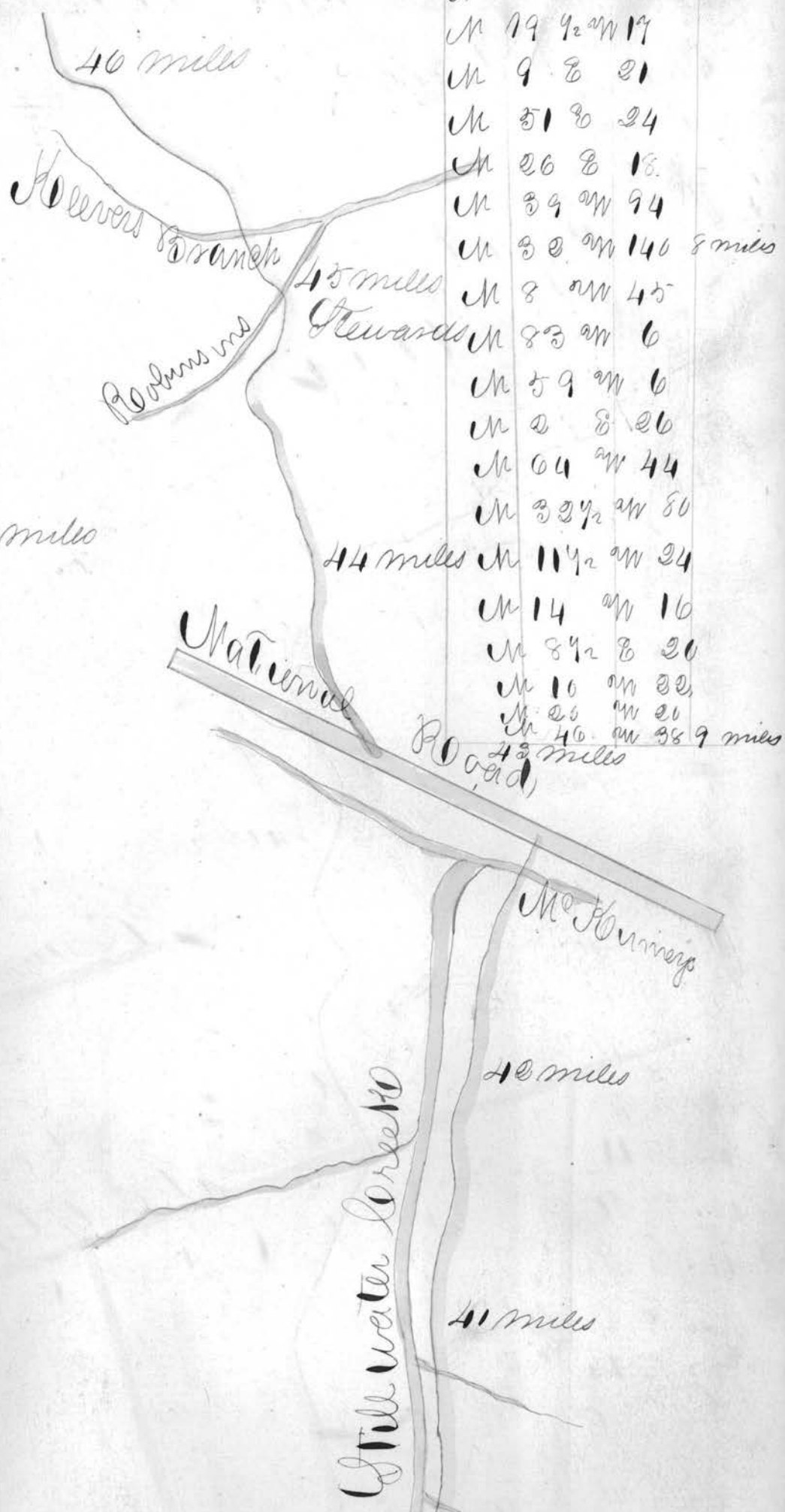


Commencing near the mouth of Miller Run thence

- N. 60° W. 49
- S. 36 1/2° W. 10
- S. 50 1/2° W. 30
- S. 43 1/2° W. 12
- S. 90° W. 8
- S. 36 1/2° W. 6
- S. 39 1/2° W. 6
- S. 48° W. 14
- N. 43° W. 8
- S. 88° W. 8
- N. 88° W. 8
- N. 69° W. 13
- N. 3° W. 8
- S. 93° W. 13
- N. 66° W. 7
- N. 73 1/2° W. 7
- S. 37° W. 13

24 Continued from p. 23.

M 63 AM 7
 M 35 AM 6
 M 60 1/2 AM 6
 M 58 AM 18
 S 99 1/2 AM 21
 M 86 AM 7
 M 99 AM 6
 S 48 1/2 AM 7
 S 36 AM 6
 S 56 1/2 AM 5
 S 50 AM 7
 S 62 1/2 AM 6
 M 86 AM 5 4 miles
 M 65 AM 6
 M 59 1/2 AM 6
 M 89 AM 5
 M 15 AM 6
 M 26 AM 5
 M 14 AM 6
 M 11 AM 4
 M 9 AM 6
 M 9 AM 4
 M 5 1/2 E 3
 M 18 E 10
 M 2 E 10
 M 11 AM 10
 M 10 AM 14
 M 18 AM 7
 M 43 AM 16
 M 48 AM 61
 M 35 AM 36
 M 20 AM 30



M 25 AM 11 7 miles
 M 28 AM 9
 M 19 1/2 AM 14
 M 9 E 21
 M 51 E 24
 M 26 E 18
 M 39 AM 94
 M 32 AM 140 8 miles
 M 8 AM 45
 M 83 AM 6
 M 59 AM 6
 M 2 E 26
 M 64 AM 44
 M 32 1/2 AM 80
 M 11 1/2 AM 24
 M 14 AM 16
 M 8 1/2 E 20
 M 16 AM 22
 M 25 AM 21
 M 40 AM 38 9 miles

M 6 E 24
 M 13 W 18
 M 19 1/2 W 52 5 miles
 M 26 W 64
 M 3 W 32
 M 6 E 49
 M 5 W 34
 M 7 W 30
 M 7 1/2 W 43
 M 15 E 35 6 miles
 M 18 E 32
 M 7 W 47
 M 10 W 16
 M 15 1/2 W 32
 M 8 W 31
 M 14 W 26
 M 15 W 14
 M 20 1/2 W 31
 M 7 W 14
 M 53 W 7
 G 89 W 10
 M 33 W 11
 M 5 1/2 W 6
 M 2 1/2 W 6
 M 11 1/2 W 6
 M 7 W 9
 M 11 E 6
 M 30 E 6
 M 61 W 6



40 miles

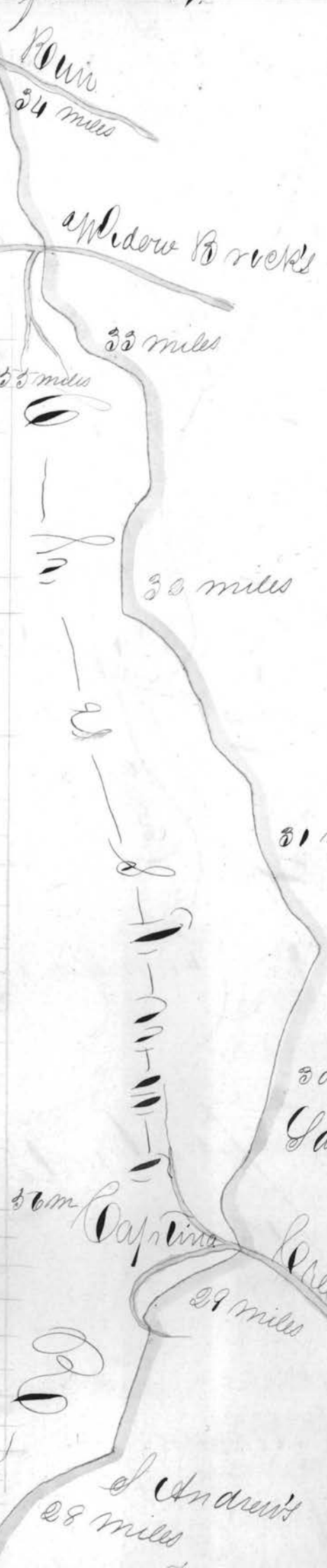
M 59 1/2 W 26
 M 38 1/2 W 17
 M 22 W 24
 M 15 E 44
 M 36 1/2 W 43
 M 43 1/2 W 46
 M 15 W 16
 M 21 W 26
 M 63 1/2 W 15
 M 68 W 29
 M 20 1/2 W 69, 10 mi's
 M 55 W 36
 M 40 1/2 W 37
 M 41 1/2 W 22
 M 10 W 14
 M 1 1/2 E 11
 M 31 W 12
 M 8 E 16
 M 52 1/2 E 16
 M 51 1/2 E 18
 M 24 W 8
 M 99 W 9
 M 81 W 6
 M 85 1/2 W 12

Continued on 26.

Continued from A.

N 70°W	10
N 60°W	11
N 44½°W	8
N 34½°W	8
N 75½°W	6
N 23°E	2
S 79°E	8
N 64½°W	27
N 91°W	30
N 44°W	30
N 71°W	11
N 68°W	10
N 38°W	11
N 84½°W	9
N 37°W	9
N 15°W	9
N 16½°E	10
N 30½°E	8
N 19°E	9
N 15°E	10
N 37½°E	13
N 17°E	10
N 5°W	13
N 1°W	40
North	8
N 9°E	16
N 30½°W	33
N 6½°W	13
N 18°W	24
N 29°W	13
N 27°W	18
N 49½°W	14

N 45°W	30
N 40½°W	14
N 88½°W	10
N 58½°W	10
N 41°W	10
N 34°W	18
N 80°W	14
N 70°W	10
S 88°W	6
N 80½°W	9
S 87°W	5
S 63°W	7
S 24°W	6
N 07°W	18
W	15
N 75°W	10
S 90½°W	10
N 77°W	30
N 56½°W	40
N 53°W	24
N 87°W	30
N 76½°W	8
S 88°W	8
S 82°W	20
N 88°W	18
N 89°W	14
N 65°W	18
N 11°W	18
N 30°E	30
N 20½°E	11
W	8
N 04°W	9
N 8°W	8
N 10°E	10
N 17°E	8
N 42°E	7
N 14°E	23



N 33°E	30
N 27°W	18
N 15½°W	16
N 01°W	27
N 27°W	30
N 10½°W	42
N 39°W	61
N 49°W	16
N 12°W	24
N 46°W	18
N 80°W	30
N 60½°W	24
N 56½°W	30
N 24½°E	11
N 30°E	9
N 8°E	8
N 14°E	7
N 12½°E	8
N 16°E	11
N 30°E	6
N 22°E	5
N 16°E	14
N 13½°W	10
N 27°W	28
N 50°W	14
S 24°W	3
S 18°E	12
S 6°W	13
S 6½°W	6
N 60°W	35
N 66°W	6
N 58½°W	36

Gamer

Capitina Creek

Andrew's

N 40 W 22

N 13 1/2 W 17

N 1 W 22

N 3 1/2 W 17

N 7 1/2 W 20

N 15 E 20

N 10 W 20

N 7 E 22

N 13 W 23

N 24 W 22

N 10 W 18

N 5 E 25

N 14 1/2 E 10

N 9 1/2 E 24

N 45 W 18

N 60 W 18

N 81 W 24

N 66 1/2 W 24

N 67 W 19

N 56 W 23

N 45 1/2 W 16

N 42 W 14

N 40 W 28

County Line
27 miles

Moawaga
26 miles

P. Canard
33 miles

34 miles

23 miles

N 65 W 28

N 69 W 17

N 5 W 14

N 108 66 16

N 22 W 6

N 22 1/2 W 8

N 15 W 8

N 31 W 7

N 17 1/2 W 12

N 1 E 8

N 9 W 10

N 15 W 10

N 1 W 7

N 3 W 9

N 4 E 8

N 3 W 7

N 3 1/2 W 7

N 13 E 8

N 3 E 16

N 3 1/2 W 20

N 11 E 40

N 12 W 40

N 31 W 20

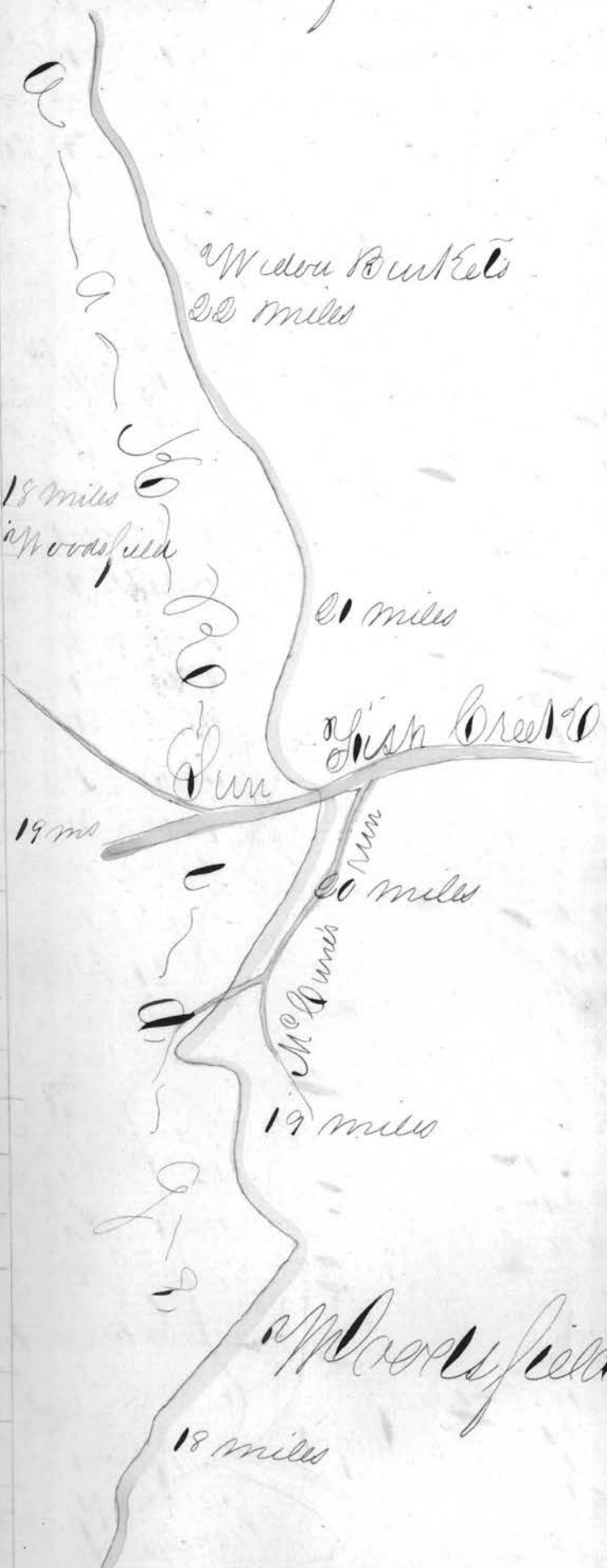
N 43 W 43 17

Continued on 26

20

Continued from 25!

- N 48 W 20
- N 55 W 24
- N 30 E 8
- N 59 W 6
- N 07 W 21
- North 30
- N 18 E 14
- N 24 W 41
- N 10 1/2 E 22
- N 6 E 14
- N 30 1/2 E 22
- N 70 1/2 W 48
- N 55 W 24
- N 21 W 18
- N 23 1/2 W 19
- N 13 W 28
- N 2 W 32
- N 16 W 20
- N 79 W 32
- N 89 W 22
- N 99 1/2 W 14
- N 27 W 5
- N 26 E 8
- N 31 E 8
- N 63 1/2 E 10
- N 29 E 11
- N 38 E 7
- N 23 1/2 E 5
- N 19 E 16
- N 24 E 10



- N 33 1/2 W 8
- N 14 E 20
- N 37 E 13
- N 7 E 10
- N 39 W 12
- N 23 W 14
- N 30 1/2 E 18
- N 15 1/2 E 12
- N 53 W 13
- N 10 W 14
- N 88 1/2 E 12
- N 85 E 6
- N 59 E 7
- N 68 E 7
- N 72 1/2 E 8
- N 66 E 4
- N 50 E 6
- N 23 1/4 E 5
- N 21 1/2 W 15
- N 17 W 12
- N 35 1/2 W 66
- N 8 1/2 W 21 Dam
- N 27 1/2 W 24
- N 22 W 27
- N 21 W 41
- N 2 W 6
- N 9 E 8
- N 13 W 19
- N 17 W 7
- N 4 E 14
- N 13 E 22

N 24 8 10
 N 22 8 8
 N 14 8 28
 N 16 8 28
 N 29 8 30
 N 13 8 48 20 m
 N 1 1/2 8 42
 N 6 1/2 8 38
 N 8 1/2 8 38
 N 9 1/2 8 30
 N 48 8 18
 N 60 8 21
 N 18 1/2 8 22
 N 4 8 146 31 m
 N 14 1/2 8 20
 N 50 1/2 8 7
 N 27 1/2 8 120
 N 72 1/2 8 18
 N 56 8 42
 N 53 8 22
 N 88 8 20
 N 34 8 100 23 m
 N 33 8 23
 N 53 1/2 8 10
 N 24 1/2 8 16
 N 33 1/2 8 26
 N 24 1/2 8 24
 N 40 1/2 8 16
 N 55 1/2 8 10
 N 63 8 25 23 m
 N 73 8 12
 N 70 8 10



N 4 8 14
 N 13 8 22
 N 7 8 20
 N 9 1/2 8 50
 North 141 28 m
 N 28 1/2 8 57
 N 19 1/2 8 24
 North 120
 N 7 8 8
 N 31 8 20
 N 41 1/2 8 10 26 to
 N 14 1/2 8 43 Malaga.
 N 31 1/2 8 20
 N 18 8 36
 N 22 8 30
 N 68 8 19
 N 44 8 12
 N 6 8 23
 N 25 1/2 8 14
 N 8 1/2 8 16
 N 11 8 10
 N 28 8 66
 N 2 1/2 8 16
 N 14 8 12 27 m
 N 7 8 10 B. Co
 N 24 8 8 Line
 N 18 1/2 8 20
 N 38 8 10
 N 1 8 18
 N 17 1/2 8 6
 N 17 1/2 8 26
 N 25 1/2 8 50

Continued on

Continued from 26

N448 14 N87°W 8
 N488 30 S08°W 8 Dismal.
 N128 22 S81°W 7
 N198 14 N67°W 8 11 miles

N8½E 30 N37°W 6
 N318 40 N00°W 10

N538 30 28 mi N - 30
 N48½E 68 N81½°W 27

N298 18 N55°W 8
 N4°W 50 N08°W 11 10 miles

N1¼E 97 N47½°W 10
 N198 33 N30°W 13

N70½°W 22 N15½°W 12

N268 10 N8½E 28
 N23½E 10 N48°W 27 9 miles

N37½E 5 N48½°W 13
 N45½E 9 N10°W 30

N86°W 10 N88°W
 N10°W 10 N12°W 58

N198 23 N54°W 12
 N08 40 N38°W 30

N4°W 10 N53°W 40
 N27°W 18 44 N37°W 23

N22°W 20 N30°W 44
 N33½°W 14 N10½°W 80

N10°W 107 N248 16
 N18°W 40 N10°W 34/40

N30½°W 12 N19°W 30
 N23½°W 8 N47°W 62

N14½°W 15 N5½E 28

N20°W 9 N28°W 24
 N67½°W 13 N33°W 34

N58°W 13 N0°W 56
 N24°W 10 N58 30
 N16°W 34 50

N 46 8 5
 N 68 8 7
 N 60 1/2 8 8
 N 8 8 8
 N 80 1/2 8 10
 N 47 8 6
 N 45 8 6
 N 58 8 6
 N 39 1/2 8 10
 N 43 8 4
 N 50 8 8
 N 13 8 8 5
 N 59 8 24
 N 47 1/2 8 6
 N 11 8 6
 N 13 1/2 8 10
 N 33 8 10
 N 9 8 84
 North 80
 N 10 1/2 8 76
 N 8 8 70
 N 9 8 40
 N 43 8 18
 N 61 8 20
 N 48 8 68
 N 49 8 24
 N 68 8 78
 N 67 1/2 8 88
 N 38 8 90
 N 45 8 13
 N 33 8 24
 N 56 8 57
 N 88 8 33
 N 18 8 94
 N 43 8 33
 N 22 8 30
 N 10 1/2 8 104
 N 99 8 33
 N 87 8 30
 N 54 8 6
 N 33 8 3
 N 4 1/2 8 7
 N 33 8 9
 N 33 8 8
 N 38 1/2 8 28
 N 53 8 12
 N 2 8 18
 N 9 8 14
 N 10 8 10
 N 11 8 10
 N 11 1/2 8 8
 N 38 8 53
 N 15 8 34
 N 7 8 81
 N 17 1/2 8 51
 N 16 8 29
 N 17 8 29
 N 15 1/2 8 8
 N 34 8 17
 N 6 8 10
 N 9 8 6
 N 19 8 17
 N 34 8 10
 N 9 8 24
 N 19 8 6
 N 39 8 4
 N 10 1/2 8 11
 N 8 8 10
 N 31 8 24
 N 40 8 18
 N 26 8 9
 N 2 8 18
 North 30
 North 14
 North 10
 N 13 8 10
 N 31 8 30
 N 20 8 40
 N 39 8 94
 N 8 8 57
 N 8 8 60
 N 9 8 56
 N 19 8 23
 N 43 1/2 8 24
 N 28 1/2 8 24
 N 15 8 48
 N 49 8 25
 N 29 8 40
 N 46 1/2 8 16
 N 8 1/2 8 23
 N 31 1/2 8 12

N 13 8 11
 N 23 8 17
 N 40 1/2 8 13
 N 34 8 14
 N 8 8 25
 N 6 8 88
 N 58 8 24 (45)
 N 33 8 94
 N 24 1/2 8 24
 N 60 1/2 8 86
 N 60 8 28
 N 55 8 23
 N 39 1/2 8 24
 N 69 8 86
 N 8 8 70
 N 90 1/2 8 5
 N 59 8 6
 N 8 8 8
 N 13 1/2 8 10
 N 9 1/2 8 11
 N 23 8 8
 N 27 1/4 8 8
 N 16 8 12
 N 20 8 12
 N 2 8 8
 N 20 1/2 8 11
 N 60 1/2 8 10
 N 41 8 12
 N 57 8 24
 N 59 8 23
 N 66 8 27
 N 55 8 23
 N 8 8 60
 N 80 1/2 8 23
 N 20 8 26
 N 45 1/2 8 20
 N 33 8 30
 N 50 1/2 8 20
 N 28 1 8 17
 N 63 1/2 8 19
 N 82 1/2 8 16
 N 89 1/2 8 14
 N 4 8 54
 N 13 8 26
 N 21 8 17
 N 64 8 45
 N 44 8 10
 N 39 8 23
 N 30 8 23
 N 51 8 80
 North 108
 N 15 1/2 8 28
 N 47 8 20
 N 44 8 26
 N 44 8 42
 N 31 8 49
 N 35 1/2 8 28
 N 49 8 12
 N 60 8 30
 N 16 8 10
 N 35 1/2 8 30
 North 36
 N 10 8 53
 N 9 8 30
 N 21 8 28
 N 34 8 23
 N 67 8 10
 N 58 8 26
 N 23 8 58
 N 5 1/2 8 23
 N 9 8 48
 N 33 8 22
 N 15 8 10
 N 40 8 26
 N 16 8 33
 N 20 8 49
 N 9 8 17
 N 33 8 26
 N 38 8 19
 N 24 8 13
 N 33 8 12
 N 90 8 13

8 miles

D. Dye's

7 miles
 1/2 mile

Drone Run

6 miles

5 miles

4 miles

3 miles

2 miles

Thence with the bearing
 of the Smarletta
 roads 5 miles to
 the national road
 thence westward on
 the road 200 miles

Down
 Pine
 89 miles

mile

in

in

in

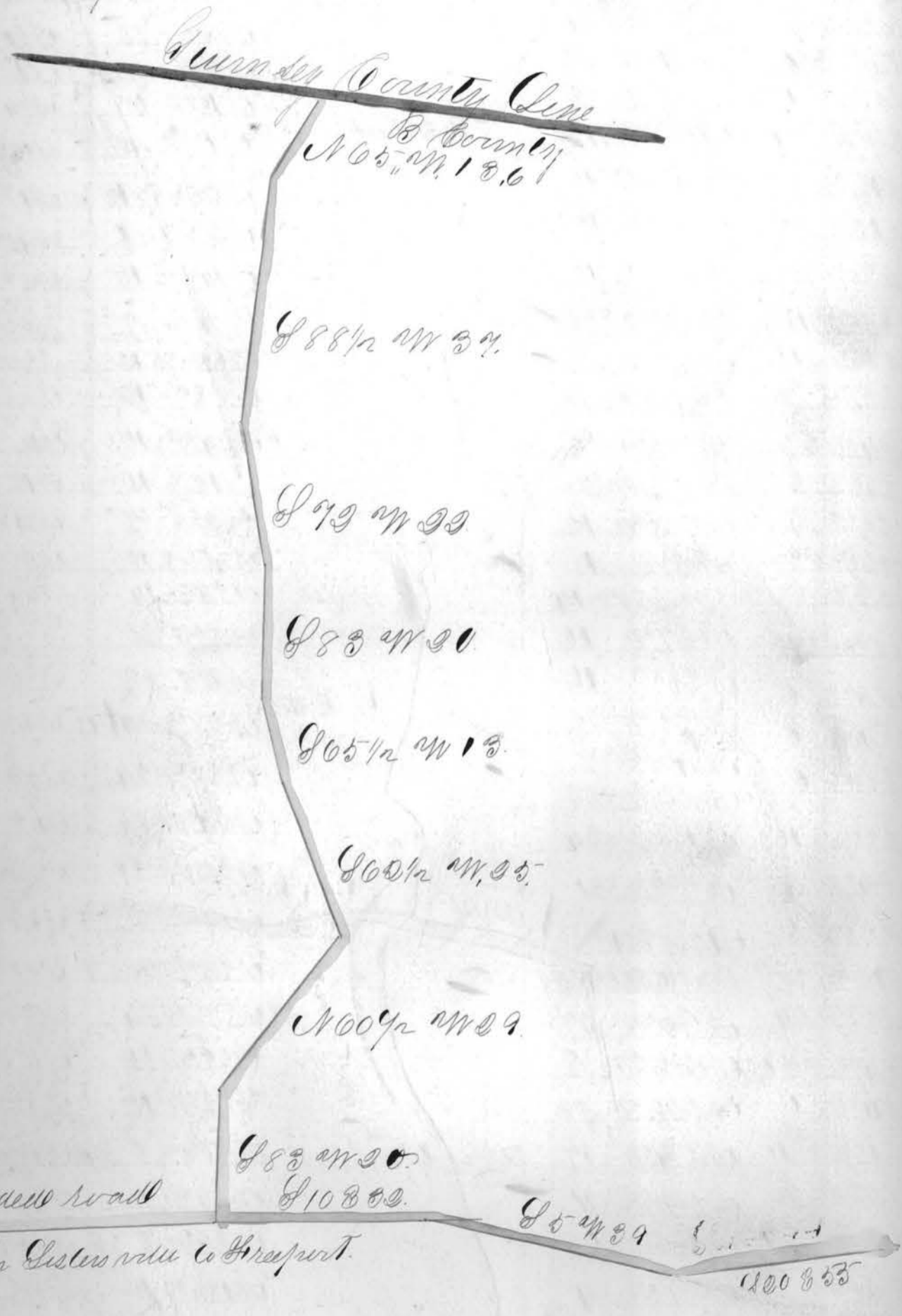
in

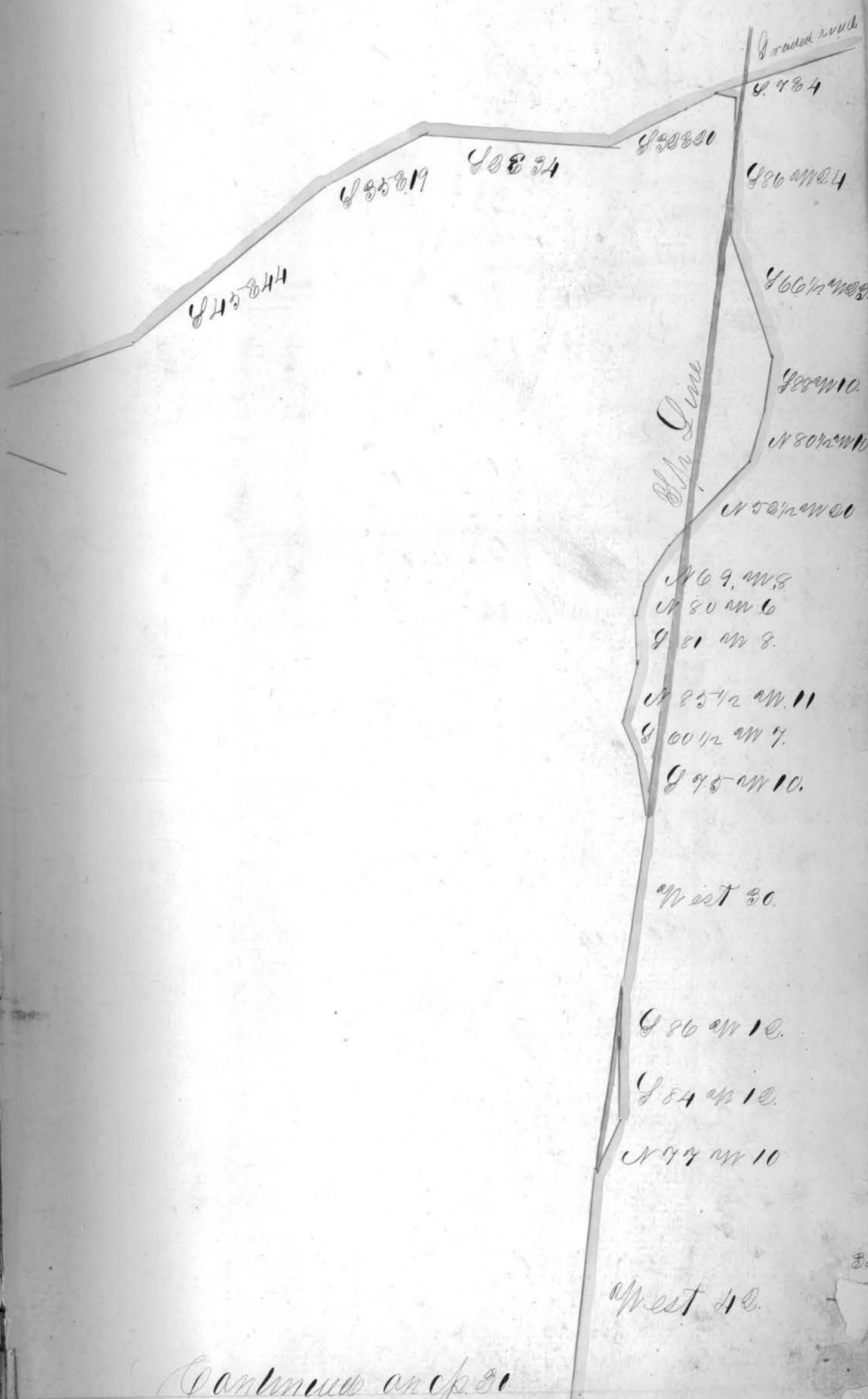
in

in

28.

Plot of the road beginning at a white oak
on the land of Jas. Chambliss running
thence to the Hurnsey County Line as sur-
veyed by Jesse Romans A.D.





Continued on p. 31.