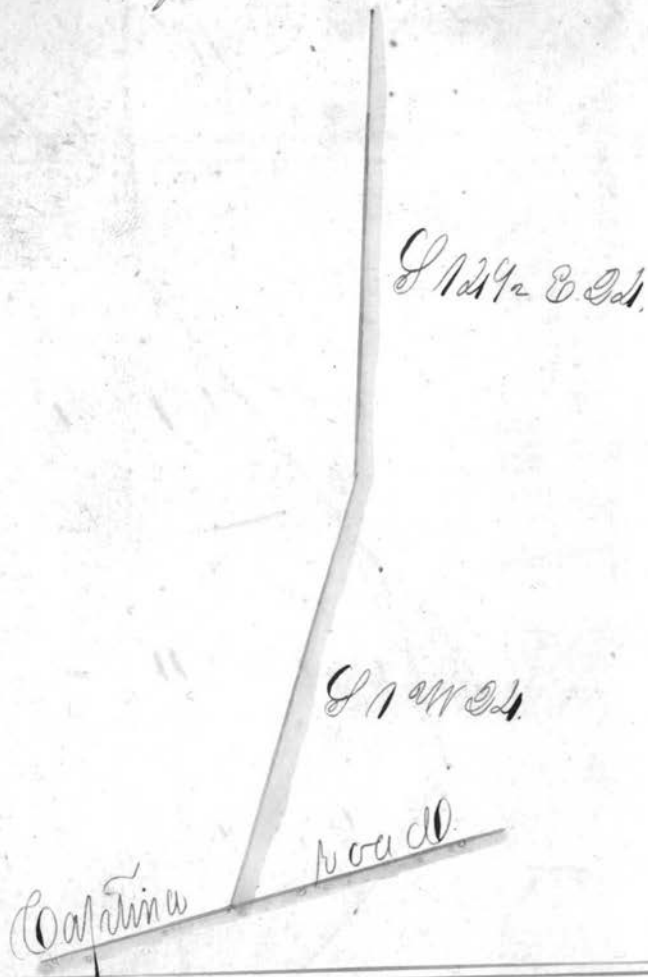
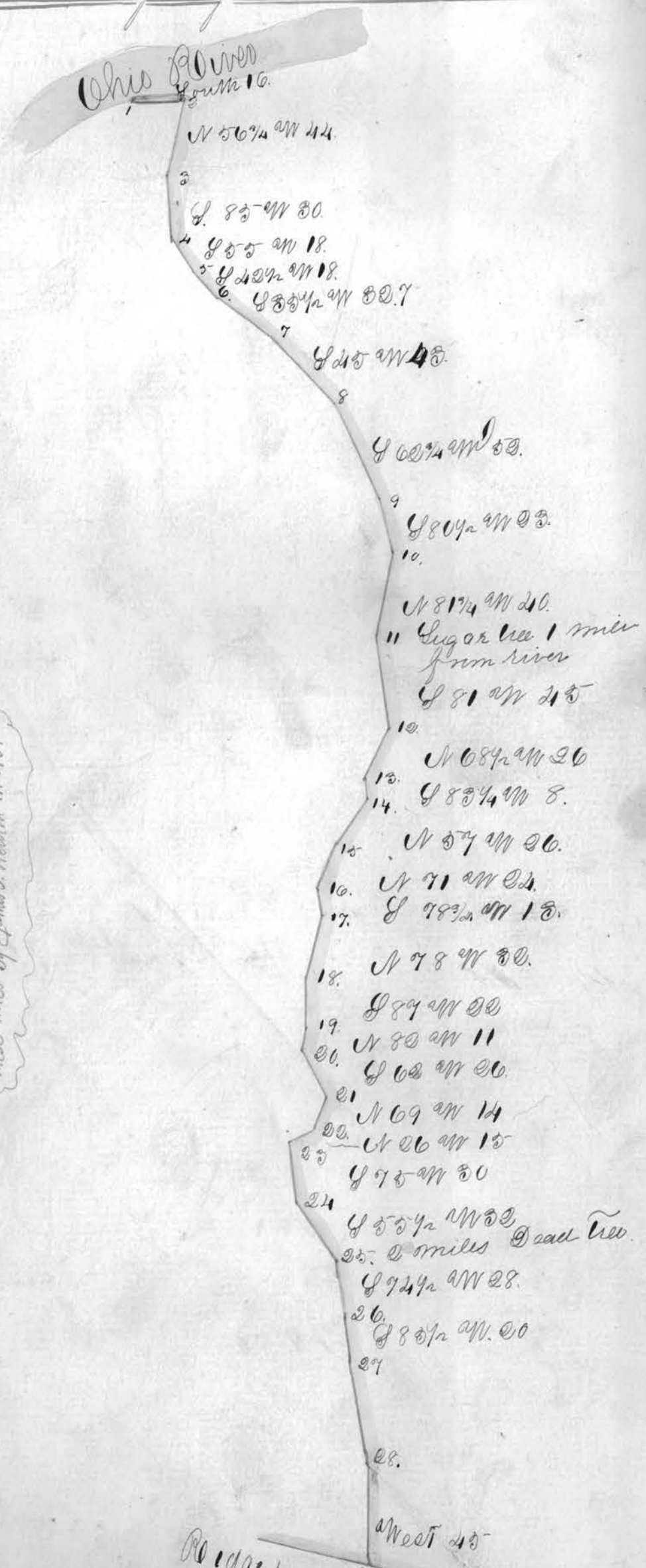


200.

Continued from page 199.



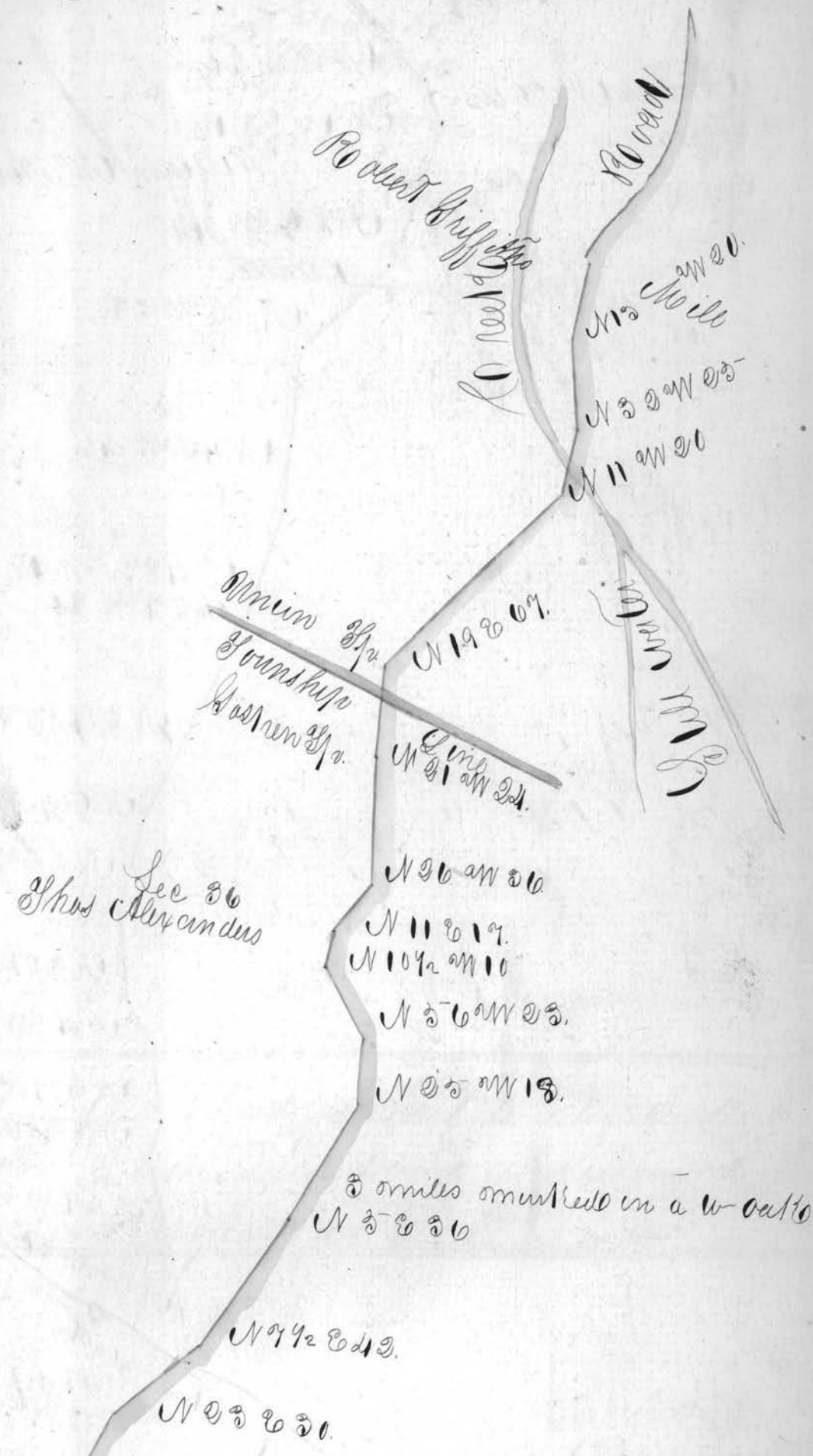
Plan of a County Road from the Ohio River  
to intersect the ridge road from Bridgeport to  
St. Charlesville, as Surveyed by Paul C. Moore A.D. 1830.



Presently known as  
"Kilgore Road" petition  
may be found in Com. Vol. No. 3, 1820-34  
page 38; view-page 45; established page 49  
Right of way 60 feet  
these notes by James J. Newton in 1961

Ridge road from Bridgeport to  
St. Charlesville.

Plan of the road from George Gampes Mill to Robert Griffiths Mill as surveyed by Thos. Lewis A.D. 1822.



North 40.

N 21 W 10.

N 30 1/2 W 10. John Hayden's

N 5 W 10.

Freemah Harris  
Sec 36

N 19 W 28.

N 28 W 20

N 40 W 10.

Benny Westcott  
Sec 33.

Benny Westcott  
Sec 39

N 36 W 10.

N 62 W 28.  
2 miles.

Elyah Hallways

N 61 1/2 W 36.

N 66 1/2 W 21

Ezer Stanburts Sec 29.  
N 82 W 21  
N 71 W 21

Continued on page 200.

N 85 1/2 W 20

Andrew McHoin-  
leys.

N 10 1/2 W 30

N 8 E 30.

N 10 W 10.

William McHoinleys

N 30 W 20.

1 mile

N 80 W 30.

N 40 W 20.

N 40 1/2 W 18.

N 50 W 30

N 50 W 30

N. 60 1/2 W 20.

N 50 W 20.

N 30 1/2 W 28.

N 40 W 10.

N 30 1/2 W 20.

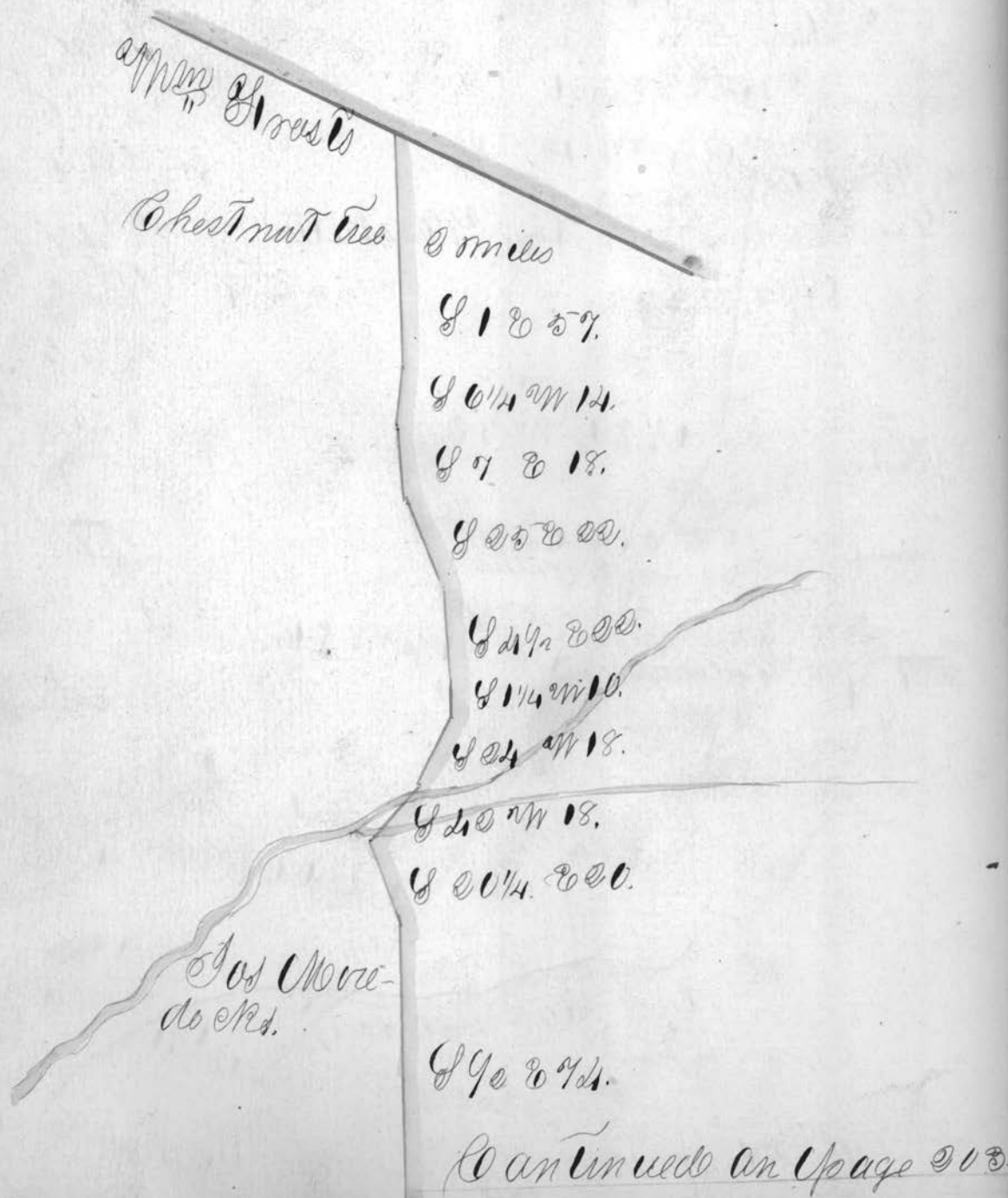
N 50 W. 10

N 20 W 28.

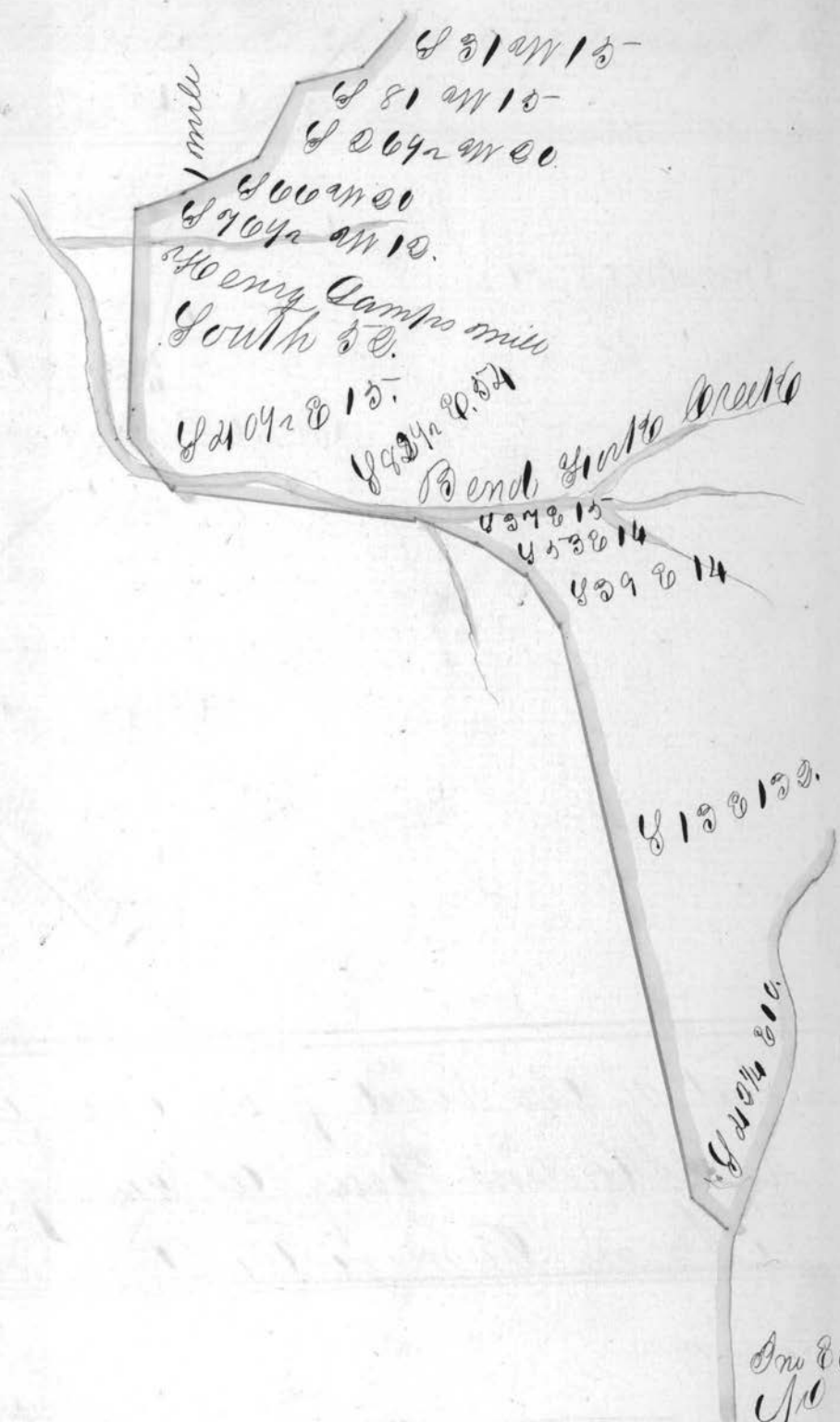
N 20 W 30.

McHoinleys road.

Plan of the road from John Swins  
to Camps Mill as Surveyed by Thos.  
Lewis A D 1899.

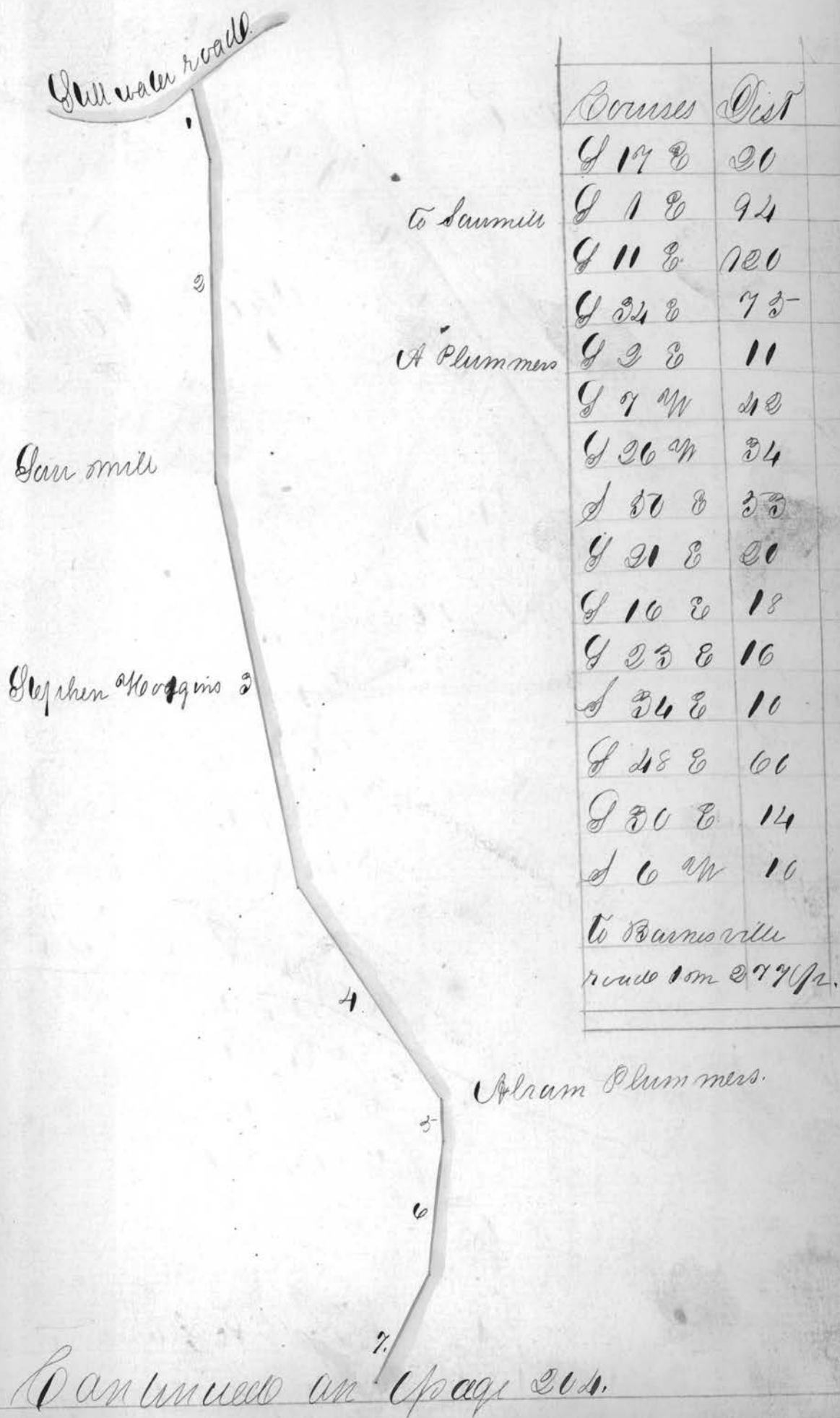


Continued from page 202



Am. Univ. No

Plan of the road from the Still water road  
to the Barnesville road as surveyed by  
Isaac Harbison A.D. 1822





Continued from Page 203

Andrew McHenry

N 10 1/2 W 26

N 8 E 26

N 13 W 10

William McHenry

N 56 W 29

1 mile

N 82 W 33

N 43 W 26

N 43 1/2 W 18

N 57 W 30

N 37 W 30

N. 60 1/2 W 22

N 32 W 23

N 30 1/2 W 28

N 4 W 10

N 28 1/2 W 23

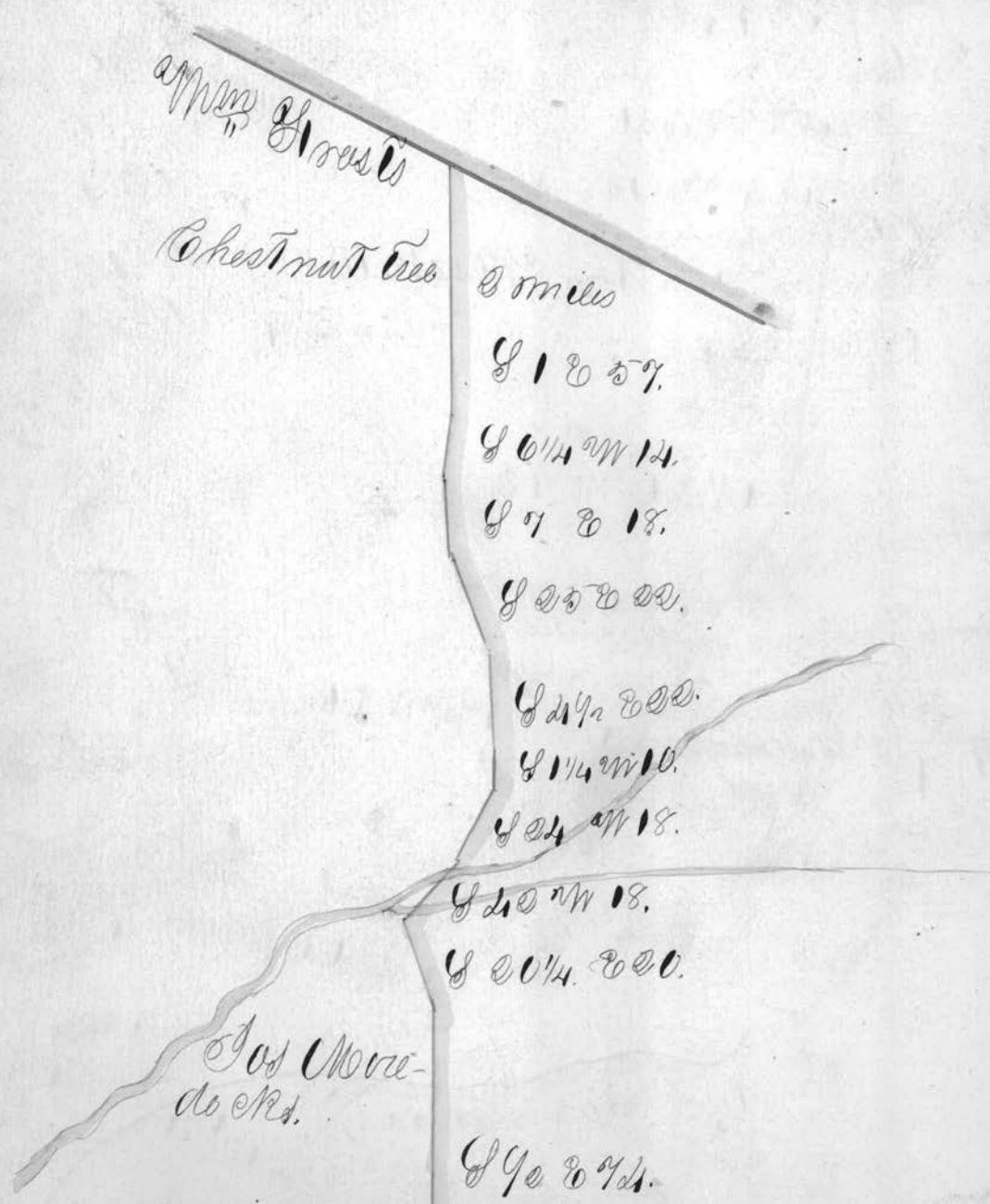
N 53 W 10

N 27 W 28

N 25 W 30

Mountain Road

Plan of the road from John Truins  
to Lampas Mill as Surveyed by Thos.  
Lewis A D 1833.



Mason's Street

Chestnut tree

Los Morcillo  
Creek

3 miles

S 1 E 57.

S 0 1/4 N 14.

S 7 E 18.

S 25 E 22.

S 2 1/2 E 22.

S 1 1/4 N 10.

S 24 N 18.

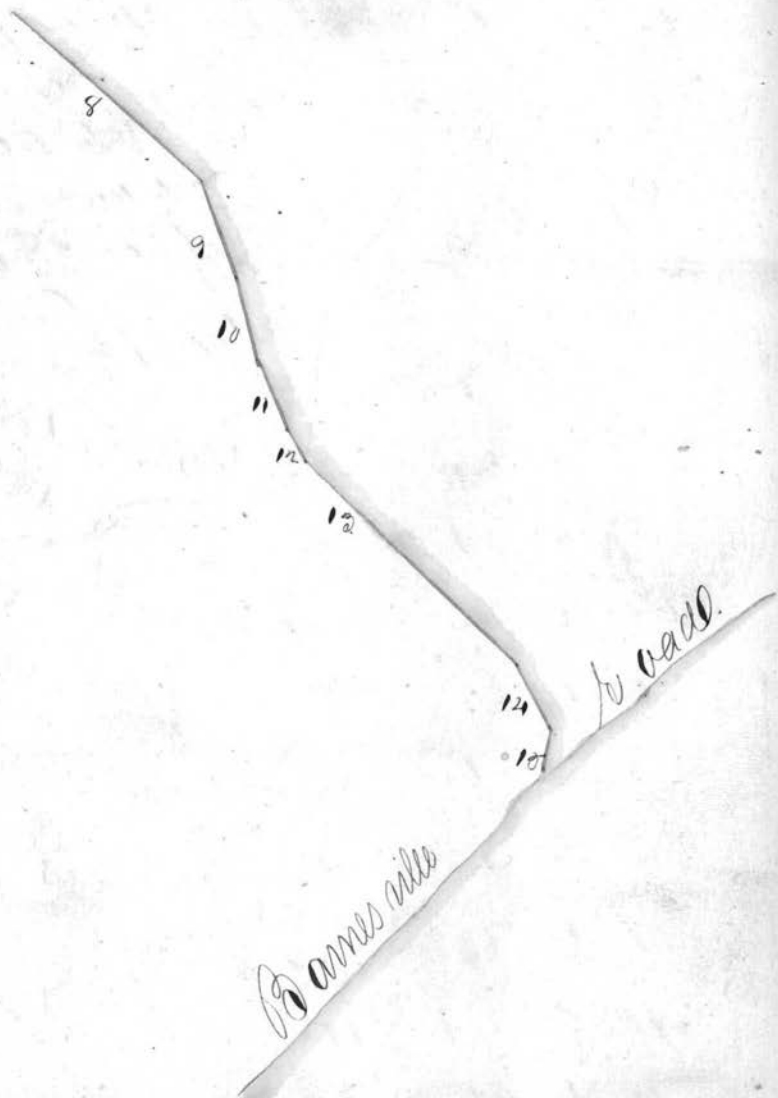
S 20 N 18.

S 20 1/4 E 20.

S 40 E 44.

Continued on Page 203.

304. R Continued from page 303.



Plan of the road from near Emmus Baileys  
to Martins Ferry as surveyed by <sup>Emmus Bailey</sup>  
Anno Domini Eighteen hundred & twenty two

Emmus Bailey  
23 p 40

Meeting

Ohio River

Martins Ferry

Island

Eber Martins

Line between Martins & Jones

Jones Land

West bank

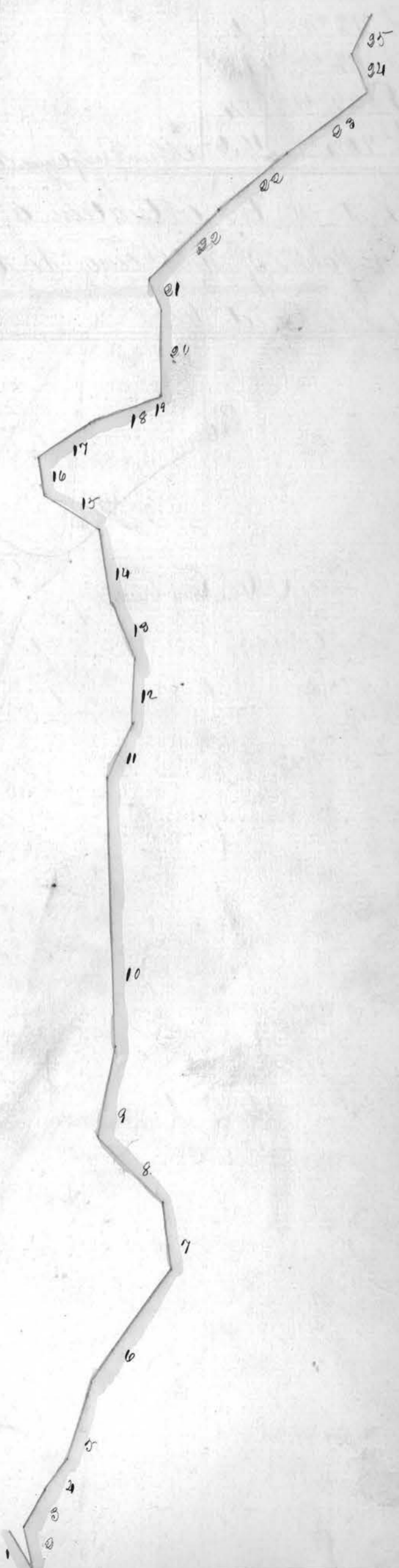
Smith & Burns

Mill road

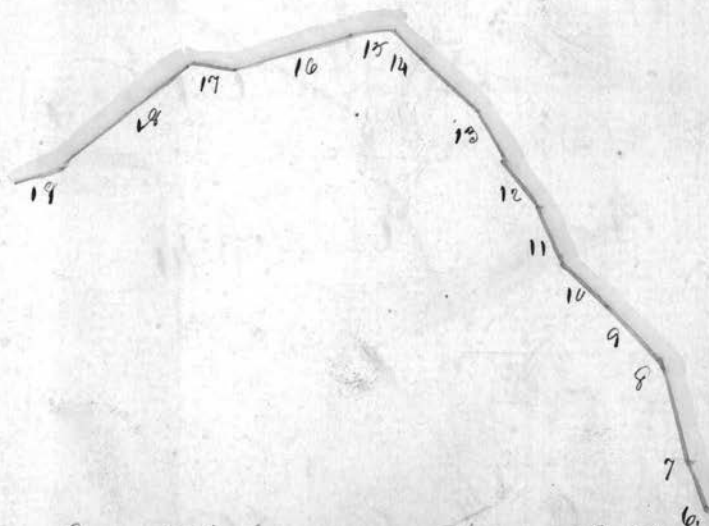
See Jones Remainder of road West  
& continue on page 20 & Error.

Plan of the road from Michael Aults Mill to John Aults Mill as Surveyed by John Eldridge A.D. 1822.

Sta	Course	Dist
1	N 60 E	24
2	S 81 W	20
3	N 64 W	23
4	N 57 W	16
5	N 73 W	24
6	N 55 W	62
7	S 80 W	32
8	S 28 W	20
9	N 79 W	38
10	West	118
11	N 60 W	24
12	West	28
13	S 04 W	24
14	West	18
15	S 60 W	10
16	S 52 W	31
17	West	11
18	N 30 W	24
19	N 20 W	28
20	S 88 W	30
21	S 80 W	18
22	N 25 W	24
23	N 50 W	22
24	S 85 W	10
25	N 26 W	10
Total		1183
- 2 1/4 m 300 paces		



Plat of a county road from the new Presby-  
 terian Meeting house to William Browns  
 as Surveyed by Jas C. Moore, A.C., 1892.



Sta	Course	Dist
1	N 59° W	9.8
2	N 52° W	14.
3	N 34 1/4° W	17.7
4	N 12 1/2° W	29.3
5	N 2 1/4° W	40.
6	N 20° W	10
7	N 13 1/2° W	19
8	N 40° W	17.7
9	N 43° W	10 1/2
10	N 19 1/4° W	13.6
11	N 89 1/2° W	15

Continued on page 206.

200.

Continued from page 205.

12	N 23 1/4 W	11.0
13	N 43 W	15.
14	N 49 W	8
15	N 84 W	9.5-
16	S 73 W	20.
17	N 80 1/2 W	9.3
18	S 53 1/2 W	8.4
19	S 90 1/4 W.	10.0



New Presbyterian Church. Beginning

That of the alteration of the road from  
 the forks of Capatina to the Barnesville  
 as surveyed by

A. D. 1828

Barnesville road

SE 197

Meeting house

S 86 W 18

S

Sandy Ridge

N 65 W 98

N 27 W 28  
9 miles

N 39 W 27

N 62 W 18

S 08 W 40

N 80 W 23

N 39 W 41

N 42 W 30

N 49 W 22

8 miles east  
on a dead road

N 31 W 21

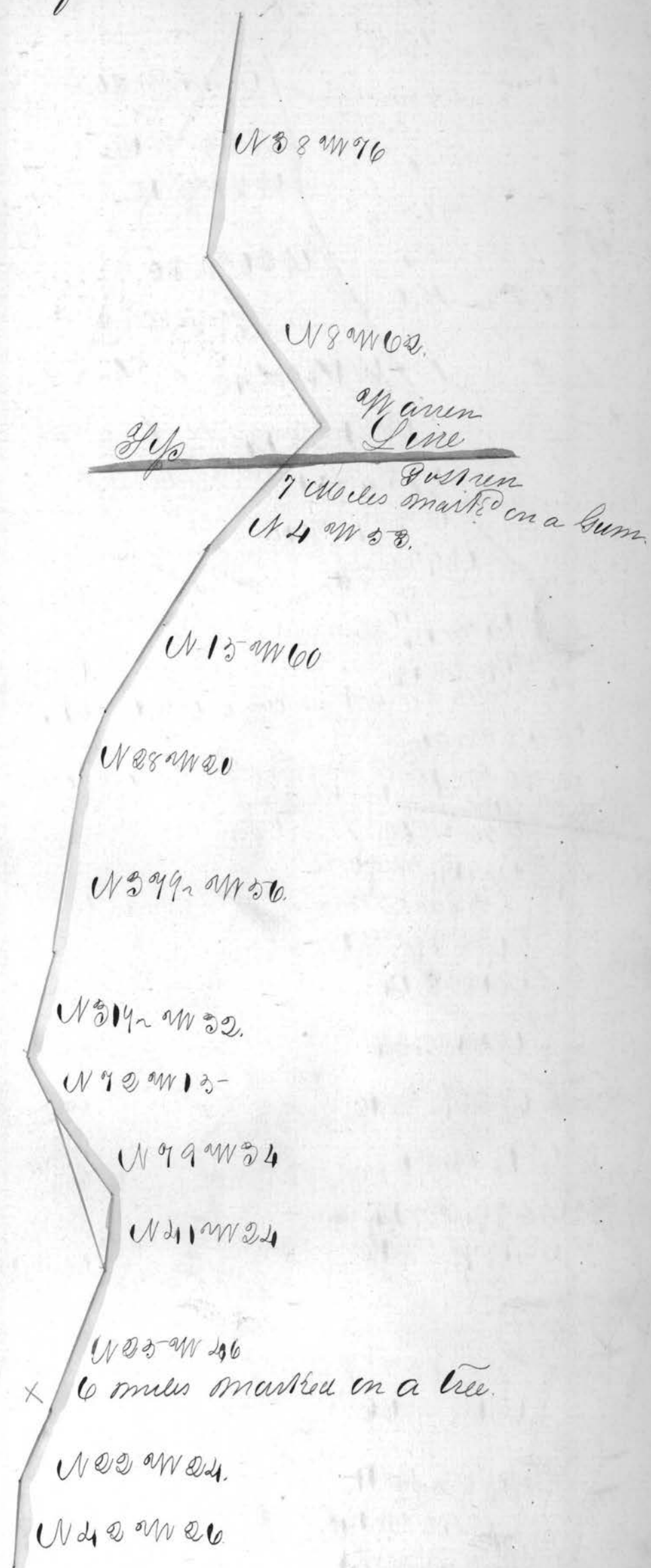
N 12 E 54

N 22 W 41

Continued on page 207.



Continued from page 206



20  
1/2

N 6 W 22.

N 50 W 65

Line

N 34 W 24

N 87 W 12

N 85 W 20

N 82 W 21.

N 23 W 26.

N 51 W 19  
5 miles from ridge on a chestnut oak

N 87 W 26.

N 82 W 43

N 33 W 20

Continued on page 208.

Continued from page 207.

U 44 NW 20

U 35 NW 19.

U 37 NW 18.

U 26 NW 20.

U 19 NW 22

U 21 NW 14

U 32 NW 18.

U 34 NW 10.

U 4 NW 24

U 12 NW 19

U 24 NW 13.

4 miles marked on a white oak

U 48 NW 20.

U 92 NW 15-

Sp. Line

U 96 NW 15-

U 84 NW 20.

Isaac Hood

U 94 NW 18.

U 13 NW 14.

U 61 NW 24.

U 34 NW 10.

U 16 NW 20.

U 34 NW 12.

U 94 NW 10.

U 68 NW 26.

U 32 NW 11.

U 93 NW 14

U 44 NW 21.

3 miles marked on an elm.

U 49 NW 12

Camel

Maryne

Long 20 mi.

W 21 1/2 W 21

W 28 W 29

W 61 W 18

W 25 W 14

W 29 W 20

W 85 W 21

W 21 W 16

W 21 W 16

W 21 W 16

W 21 W 16

W 21 W 16

W 21 W 16

W 21 W 16

W 21 W 16

W 21 W 16

John Mas with

John Mas with

John Mas with

W 21 1/2 W 21

2 miles marked on a  
white card

W 65 W 8

Continued on page 209.

To an Annex from Page 208.

Joseph Christensen's

W 21 N 48.

W 30 N 66.

W 30 N 23.

W 69 N 25.

W 66 N 26.

W 21 N 23.

W 11 N 30

1 mile marked on a W Oak.

Hand

W 30 N 34.

W 81 N 28.

Hand

W 9 N 30.

W 94 N 19

W 30 N 23.

W 69 N 25.

Hand

W 69 N 25.

W 30 N 24

W 86 N 29

W 94 N 16.

W 91 N 11

W 69 N 16.

W 61 N 10

W 91 N 18.