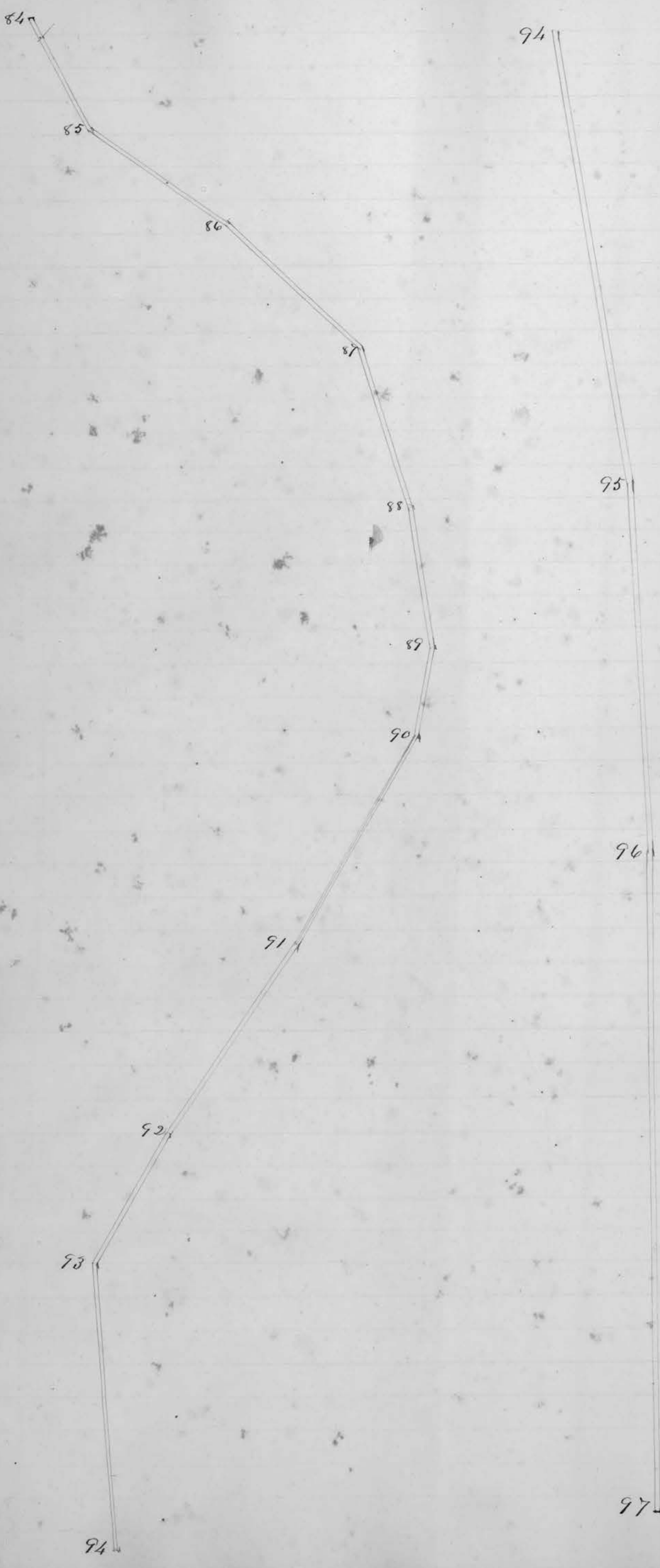


311



97

100

98

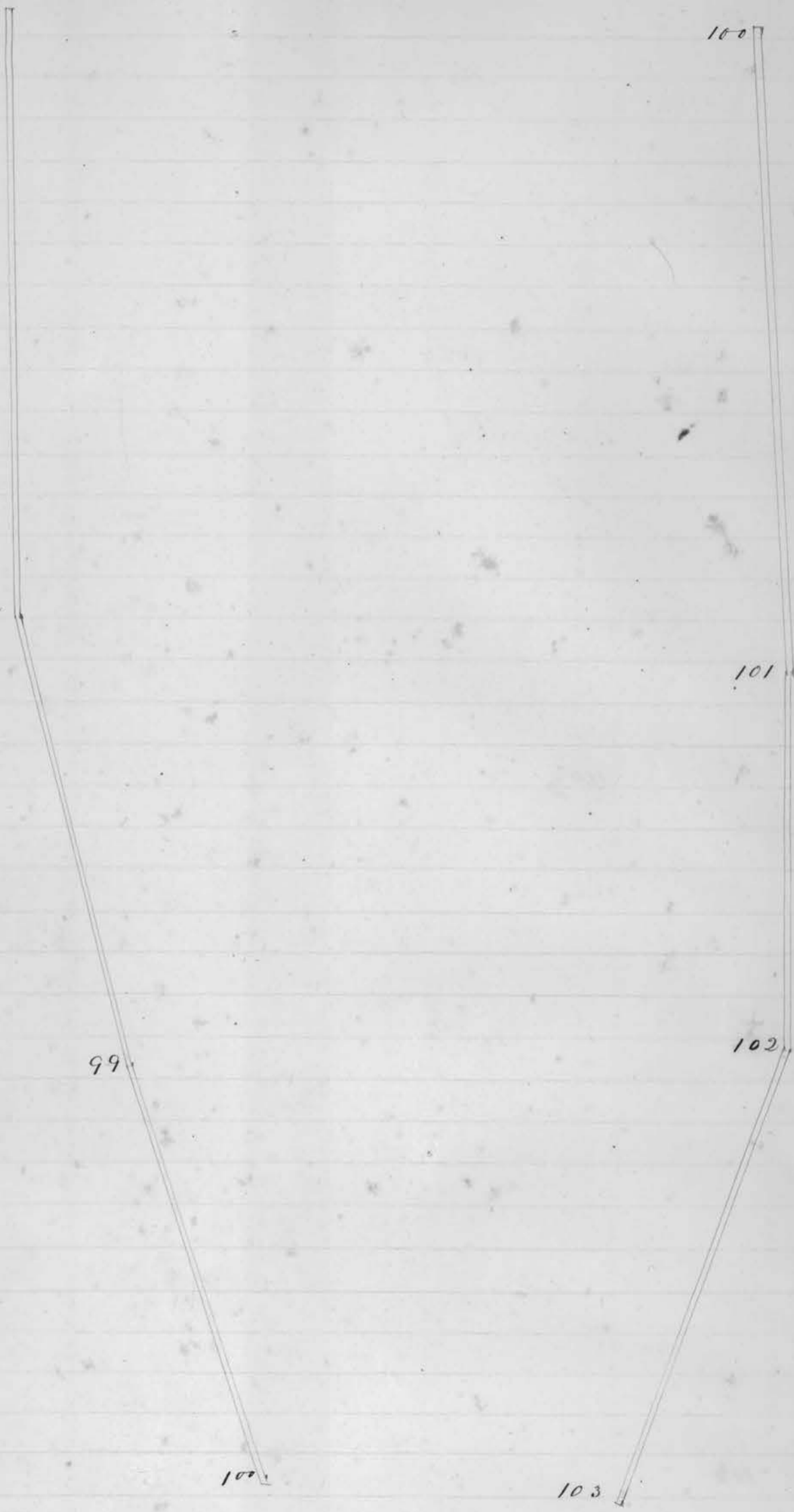
101

99

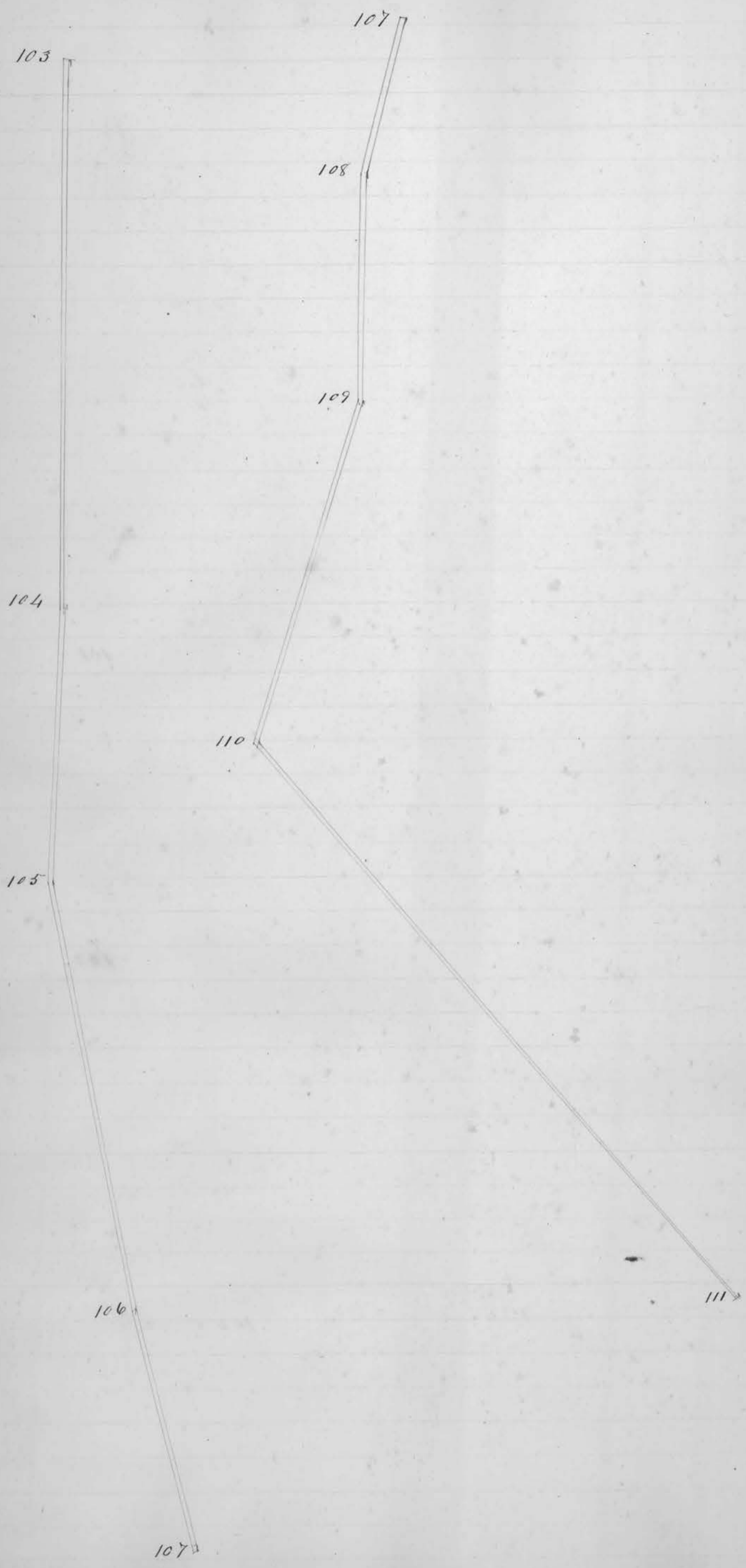
102

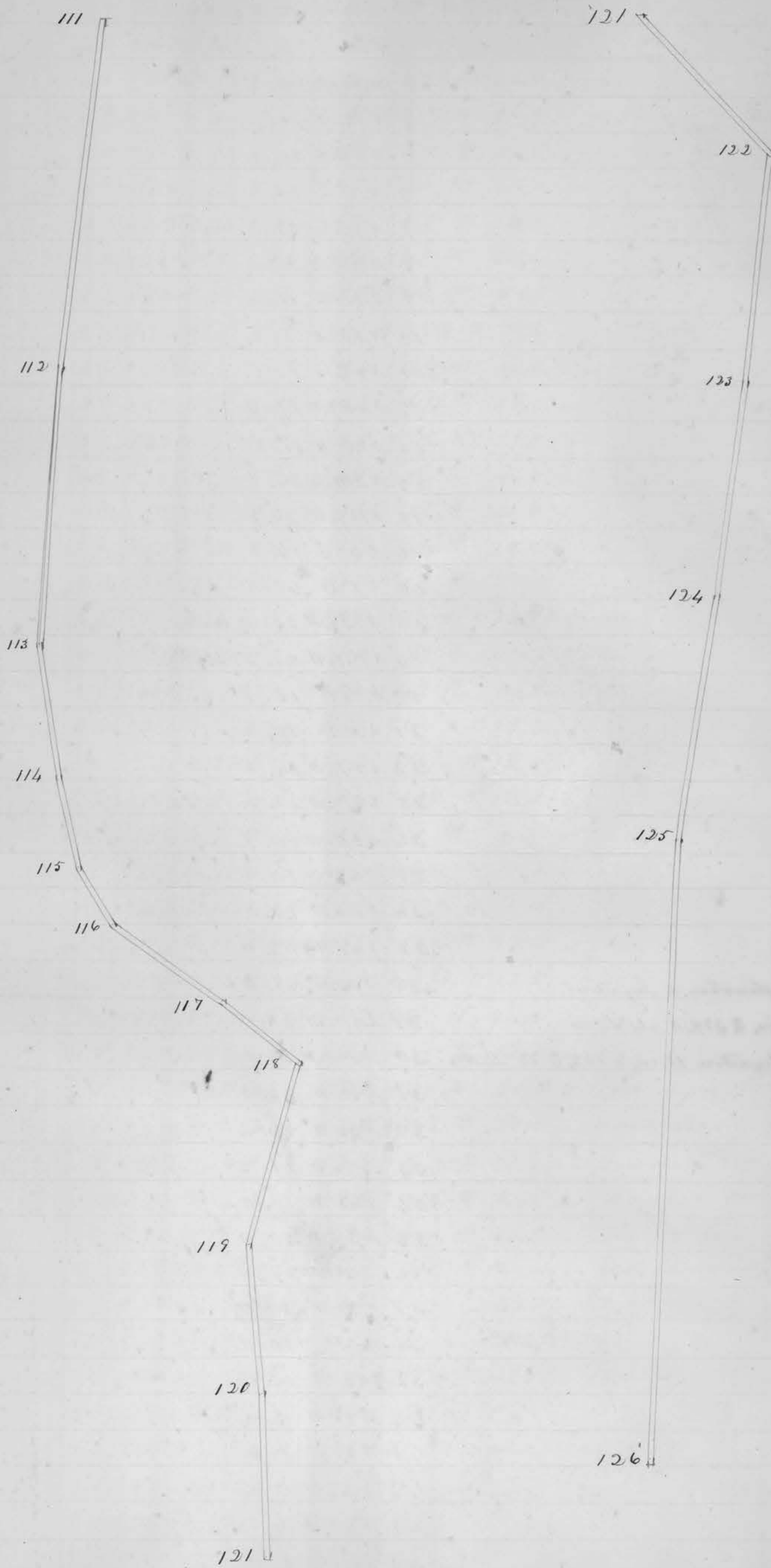
100

103



313





Course and distances of Co. Road



Station	Bearing	Dist.	Object
1	S 88 3/4 W	12.6	Stake
2	N 54 W	3.8	"
3	N 28 3/4 W	15.8	"
4	N 20 1/2 W	16.6	"
5	N 7 1/2 W	25.3	"
6	N 1 E	25.4	"
7	N 2 1/4 E	39.1	"
8	N 40 3/4 W	29.7	"
9	N 40 W	9.3	"
10	N 13 1/2 W	7.2	"
11	N 1 E	7.1	"
12	N 45 3/4 W	17.6	"
13	N 47 1/2 W	11.8	"
14	N 20 1/2 E	26.7	"
15	N 18 3/4 W	26.5	"
16	N 5 E	17.8	"
17	N 1 E	60.0	"
18	N 12 1/2 W	30.0	Buckeye
19	N 77 1/2 W	27.2	Stake
20	N 79 W	15.7	"
21	N 60 W	20.0	"
22	N 57 1/4 W	18.5	"
23	N 67 1/4 W	25.0	"
24	N 55 1/2 W	14.7	"
25	N 59 3/4 W	10.0	"
26	N 42 W	13.0	"
27	N 49 W	12.0	"
28	N 33 1/4 W	18.0	"
29	N 47 1/2 W	24.0	"
30	N 38 1/2 W	36.0	"
31	N 34 W	20.5	"
32	N 35 W	36.4	"
33	N 46 W	25.5	"
34	N 65 W	12.0	"
35	N 67 W	50.0	"
36	N 68 1/2 W	16.0	"
37	N 69 W	27.0	"
38	N 73 1/4 W	10.4	"
39	S 85 W	10.6	"
40	N 50 W	5.4	"
41	N 51 W	7.6	"
42	N 52 W	10.4	"
43	N 60 W	9.2	"
44	S 8 1/2 W	5.0	"
45	N 4 W	8.6	"
Continued			

46	N 17 1/2 E	7.5	..	92	N 5 1/2 W	14.7	..
47	N 16 1/2 E	10.8	..	93	N 40 W	28.2	..
48	N 28 3/4 E	11.5	..	94	N 38 1/4 W	44.0	..
49	N 41 E	14.0	..	95	N 31 3/4 W	36.0	..
50	N 48 E	14.0	..	96	N 29 1/2 W	64.7	..
51	North	2.8	..	97	N 40 W	48.0	..
52	N 31 1/4 W	16.5	..	98	N 55 W	36.0	..
53	N 29 1/2 W	8.9	..	99	N 61 W	34.0	..
54	N 52 W	17.3	..	100	N 43 W	50.0	..
55	N 73 W	4.4	..	101	N 39 3/4 W	29.6	..
56	N 19 1/2 W	4.8	..	102	N 15 3/4 W	37.3	..
57	N 35 W	7.5	..	103	N 6 1/2 W	52.0	..
58	N 38 W	9.4	..	104	N 4 1/4 W	27.0	..
59	N 36 3/4 W	7.6	..	105	N 18 W	41.0	..
60	N 30 1/2 W	6.2	..	106	N 22 W	23.6	..
61	N 13 W	13.0	..	107	N 4 1/2 W	15.0	..
62	N 33 3/4 W	18.0	..	108	N 17 W	22.0	..
63	N 14 W	5.4	..	109	N 6 W	33.9	Dogwood
64	N 3 1/2 W	11.6	..	110	N 55 W	69.9	Stake
65	N 30 1/2 W	7.4	..	111	S 62 W	31.3	..
66	N 24 W	7.8	..	112	N 66 1/2 W	25.2	..
67	N 9 1/2 W	5.5	..	113	N 75 1/2 W	12.0	..
68	N 16 1/2 E	9.2	..	114	N 82 1/2 W	5.2	..
69	N 15 1/2 E	7.5	..	115	S 80 W	6.0	..
70	N 18 1/2 E	9.2	..	116	S 56 1/2 W	12.0	..
71	N 15 3/4 E	10.3	..	117	S 59 1/2 W	9.0	..
72	N 11 1/2 E	11.0	Stake	118	N 52 3/4 W	17.0	..
73	N 18 1/2 E	13.8	..	119	N 73 1/2 W	13.5	..
74	N 19 3/4 E	22.6	..	120	N 69 W	14.5	..
75	N 1 1/2 E	15.4	..	121	N 80 W	17.2	..
76	N 22 W	10.6	..	122	N 30 W	20.6	..
77	N 47 1/4 W	5.2	..	123	N 29 1/4 W	20.0	..
78	N 83 1/2 W	16.6	..	124	N 24 3/4 W	22.3	..
79	N 38 1/2 W	7.2	..	125	N 33 1/4 W	56.3	..
80	N 16 W	13.0	..	126	N 40 1/4 W	33.4	..
81	N 39 3/4 W	52.2	..	127	N 31 1/4 W	21.3	..
82	N 25 W	12.3	..	128	N 20 3/4 W	35.2	..
83	N 41 1/2 W	10.3	..			2511.5	..
84	N 65 1/4 W	12.0	..				Whole 7 miles 27 1/2 Perches
85	S 87 1/2 W	16.4	..				Bar. 2. E.
86	N 84 W	18.0	..				Scale 10 poles to an inch
87	N 53 3/4 W	16.4	..				
88	N 46 1/2 W	13.8	..				
89	N 24 1/2 W	8.7	..				
90	N 6 1/2 W	24.8	..				
91	N 1 1/2 W	22.2	..				

Surveyed May 15, 16, & 17. a road leading from near the burned Presbyterian meeting house in Holmansville, to the Co. line between Harrison and Belmont.

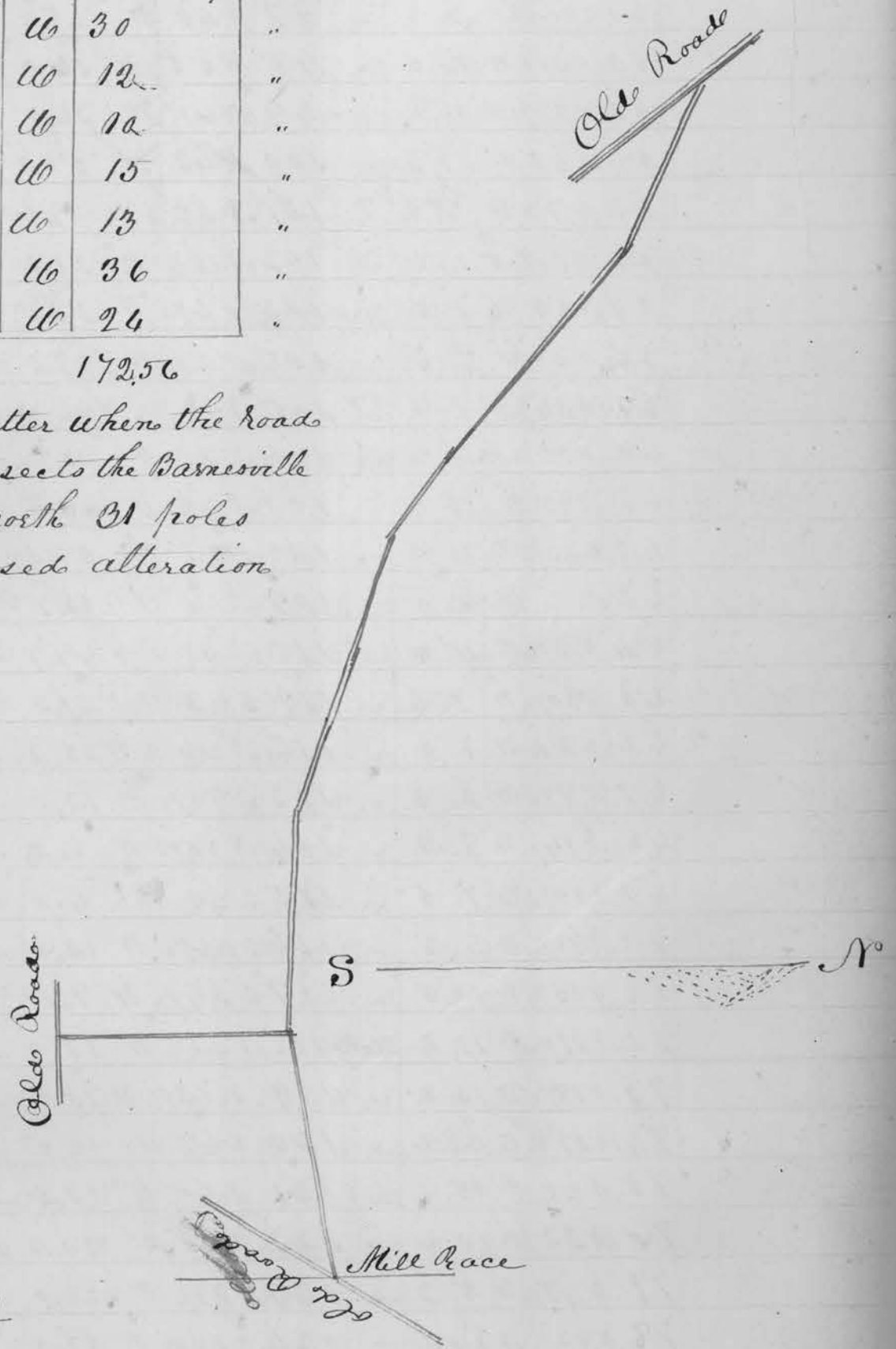
C. R. Buckler
Surveyor

317
 Plat of the proposed alteration of the State Road leading from the mouth of Captina Creek to Barnesville. Also the continuation of the roads leading from Newcastle to Buffalo Point as surveyed on the 28th of 5th Month (May) 1843, Beginning for the former where the road crosses the race conveying the water to Thomas Ewers Mill running thence S. 82. W. 32.56 perches

2	N.	86 1/2	W	30	"
3	N.	69	W	12	"
4	N	59	W	10	"
5	N	71	W	15	"
6	N	56	W	13	"
7	N	45 1/2	W	36	"
8	N	66 1/4	W	24	"

Length 172.56

Beginning for the latter when the road from Newcastle intersects the Barnesville Road running thence north 31 poles to intersect the proposed alteration



Fees

1 Day Surveying 1.50
 Platting 1.50
3.00

I do certify that the above plat is a correct representation of the above described roads as surveyed agreeably to the direction of Lewis Butcher John N Evans and Samuel Finley Trustees of Wayne Township Belmont Co Ohio

Asa Parretson Surveyor

Plat of a road beginning at the North East Corner of Section No 15 in Somerset Township near the Saw Mill of Samuel Williams passing the residence of Samuel Neptune and intersecting the Williamsburgh and Boston roads at the east end of Joseph Wilson's lane, as surveyed on the 18th of 12th month (December) 1843 Length Two Miles and 296 perches





Stations	Bearing	Distance
1	S	27
2	S 46 W	7
3	S 62 W	27
4	S 77 W	16
5	N 74 W	6
6	N 59 W	20
7	N 68 W	40
8	N 61 W	9
9	N 53 W	11
10	N 55 W	26
11	N 64 W	14
12	N 45 1/2 W	10
13	N 41 W	20
14	N 53 1/2 W	20
15	N 49 1/2 W	16
16	N 35 1/2 W	17
17	N 48 1/2 W	14
18	N 53 1/2 W	26
19	N 5 W	36
20	N 36 W	24
21	N 57 W	27
22	N 56 W	26
23	N 53 1/2 W	52
24	N 63 1/2 W	60
25	N 64 1/2 W	18
26	N 62 1/2 W	24
27	N 45 W	67
28	N 11 W	26
29	N 1 W	18
30	N 3 E	12
31	N 10 E	16
32	N 25 W	16
33	N 30 W	22
34	N 34 W	72
35	N 33 W	8
36	N 81 W	34
37	N 80 W	20
38	N 73 W	32