

County Update

The Monthly Newsletter For The Belmont County Engineer's Department

September 22nd

**First Day
Of Fall**



Fred's Desk



SUMMER IS QUICKLY coming to an end, but the construction season continues. Lash Paving was awarded the \$690,395 resurfacing project, and to date they have completed the CH 82 (Airport Road) and County Highway 5 (Crescent-US 250) portion of the contract. Still to be paved by Lash are County Highway 4 (Barton-US 250) and the west end of County Highway 214 (High Ridge Road). Since the project was under the engineer's estimate, portions of additional roads will also be resurfaced.

Bids were opened on August 14th for the removal and replacement of the Sand Hill Bridge on County Highway 4 over McMahon Creek. Ohio West Virginia Excavating, Inc., submitted the only bid in the amount of \$798,153. Since the engineer's estimate was \$650,000, the bid was

rejected. This bridge will be re-bid at a later date.

We received word from the Ohio Department of Transportation that Morton Salt, Inc. has been awarded the 2013-14 winter contract for furnishing rock salt. This year's bid is \$36.45 per ton delivered, which is down from \$46.87 last year. Two years ago, it was \$63.62 per ton. We are scheduled to buy 3000 tons this year. I hope we don't need to use any of it this year.

We have recently received word from the Federal Highway Administration that we can begin work on the new traffic signals project at the intersection of Mall Road with Banfield Road. This \$118,494.18 project is under contract with Perram Electric, Inc. and is funded 100% by FHWA. A pre-construction conference will be held on Septem-

ber 16, with work starting after that date.

The bridge crew just finished installing a new precast concrete box culvert on County Highway 98, Badgersburg Road. This 14' x 8' four sided structure replaces an old concrete bridge. On Tuesday, Sept. 3rd, they will begin a bridge replacement project on CH 102, Mt. Olivett Road. This bridge should be finished by the end of September, and will make the 7th bridge completed this year.

In addition to their regular work of mowing, patching, grading, etc., the road crews have ditched all of the roads which are now being paved. As usual, they have done a great job.

Since school has started during the back few weeks, this is just a reminder to watch for students and school buses. Please drive carefully and be alert at all times.

Projects



Co. Rd. 98 Badgersburg Road bridge replacement nearing completion.



Pultney Township 325 Indian Run bridge replacement completed.



Lash Excavating & Paving working on Co. Rd. 5 Crescent - 250 and at right, Co. Rd. 84, Airport Road.



Welcome T.J. Moore

T.J. Moore started his employment with the Engineer's Department on August 12th. He came to us from the Belmont County Sanitary Sewer Department.

He enjoys spending time outside fishing and hunting.



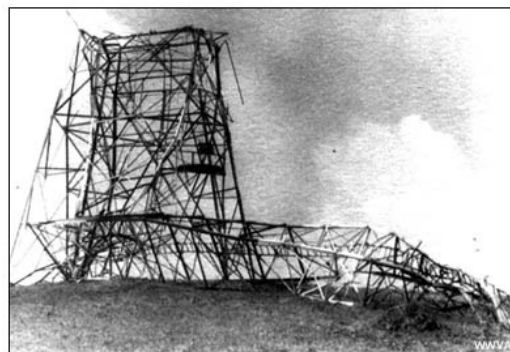
Children At Play Signs

Several times a year the Engineer's Department receives request for some type of Children at Play signs. After the 2011 sign upgrade project, it was decided to follow the ODOT practice of not using these signs as they are non standard. See below for the ODOT explanation for this practice. This can also be found at <http://www.dot.state.oh.us/districts/D01/PlanningPrograms/trafficstudies/Pages/SlowChildrenatPlaySigns.aspx>

*“These signs are not used by Ohio Department of Transportation (ODOT) on the rural state highway system and ODOT discourages others from using them. It should also be noted that the rectangular children at play signs that are often seen are a nonstandard shape for a warning sign. Warning signs should be diamond-shaped. It should be noted that if there is a "designated children's play area" the Ohio Manual of Uniform Traffic Control Devices does have a "playground sign." The following is from the Traffic Engineering Manual of the Ohio Department of Transportation (ODOT). It discusses ODOT's position on the use of signs with wording such as children at play, slow children or watch for children. Signs intended to alert drivers that children may be present in an area, such as CHILDREN AT PLAY or WATCH FOR CHILDREN, have not been shown to have a discernable benefit to traffic safety but still remain popular with the public. No factual evidence has been presented to document the success of this type of signing in reducing pedestrian accidents, operating speeds or legal liability. Studies have shown that many types of signs attempting to warn of normal conditions in residential areas, or conditions that are not always present, have failed to achieve the desired safety benefits. Children should not be encouraged to play in the roadway. If signs encourage parents and children to believe they have an added degree of protection, which the signs do not and cannot provide, this can result in a disservice. This type of signing has long been rejected since it is a direct and open suggestion that this behavior is acceptable. For these reasons, ODOT does not provide CHILDREN AT PLAY or similar signing. **This type of signing is not recommended for use on any roadway at any time”.***

August 2010 Wind Storm

On August 4th, 2010 gale force winds swept through the Ohio Valley, causing significant damage over a wide area. The WWVA radio towers (below left) fell during the storm and were later rebuilt. The towers suffered the same fate in 1936 during a wind storm.



WWVA's 1936 tower collapse